

# **VEVOR<sup>®</sup>**

**TOUGH TOOLS, HALF PRICE**

Technical Support and E-Warranty Certificate

[www.vevor.com/support](http://www.vevor.com/support)

## **FUEL JERRY CAN USER MANUAL**

**Model: Yoilp3001-20L**

We continue to be committed to provide you tools with competitive price. "Save Half", "Half Price" or any other similar expressions used by us only represents an estimate of savings you might benefit from buying certain tools with us compared to the major top brands and does not necessarily mean to cover all categories of tools offered by us. You are kindly reminded to verify carefully when you are placing an order with us if you are actually saving half in comparison with the top major brands.

# VEVOR<sup>®</sup>

TOUGH TOOLS, HALF PRICE

## FUEL JERRY CAN



### NEED HELP? CONTACT US!

Have product questions? Need technical support? Please feel free to contact us:

**Technical Support and E-Warranty Certificate**  
**[www.vevor.com/support](http://www.vevor.com/support)**

This is the original instruction, please read all manual instructions carefully before operating. VEVOR reserves a clear interpretation of our user manual. The appearance of the product shall be subject to the product you received. Please forgive us that we won't inform you again if there are any technology or software updates on our product.

## **▲WARNING**

1. Read carefully and understand all **ASSEMBLY AND OPERATION INSTRUCTIONS** before operating.
2. Failure to follow the safety rules and other basic safety precautions may result in serious personal injury.

## **GENERAL SAFETY RULES**

### **▲WARNING**

Before attempting to operate or install the fuel unit carefully read and take note of the following safety warnings. Failure to comply with these warnings may result in serious injury or death.

Prior to installing or using the fuel unit all operators must have read and fully understand the contents of this instruction manual as well as all other manuals supplied, and the safety decal fitted to the fuel unit.

Avoid fuel contact with skin and eyes and avoid breathing vapors or mists. Ensure that all operator-and associated personnel are familiar with the legal regulations and codes of practice that apply to the safe use, storage and disposal of fuel.

### **Warning:**

- DANGER
- EXTREMELY FLAMMABLE
- VAPORS CAN EXPLODE
- HARMFUL OR FATAL IF SWALLOWED
- If swallowed, do not induce vomiting; call a physician immediately
- Keep out of reach of children • Avoid prolonged breathing of vapors
- Do not siphon by mouth
- Store and use in a well-ventilated area
- Vapors can be ignited by a spark or flame source many feet away
- Keep away from flame, pilot lights, stoves, heaters, electric motors, and other sources of ignition.

# SAVE THESE INSTRUCTIONS

## MODEL AND PARAMETERS

Model	Yoilp3001 -20L	Yoilp3001 -20L	Yoilp3001 -20L	Yoilp3001 -20L	Yoilp3001 -20L	Yoilp3001 -20L
Capacity	20L	20L	20L	20L	20L	20L
Color	Yellow	Black	Green	Red	Red	Green
packages	1	1	1	1	2	2
Material	Cold-Roll Steel					

## STRUCTURE DIAGRAM



1.Handle 2. Latch and Cap 3. Spout 4. Fuel Jerry Can

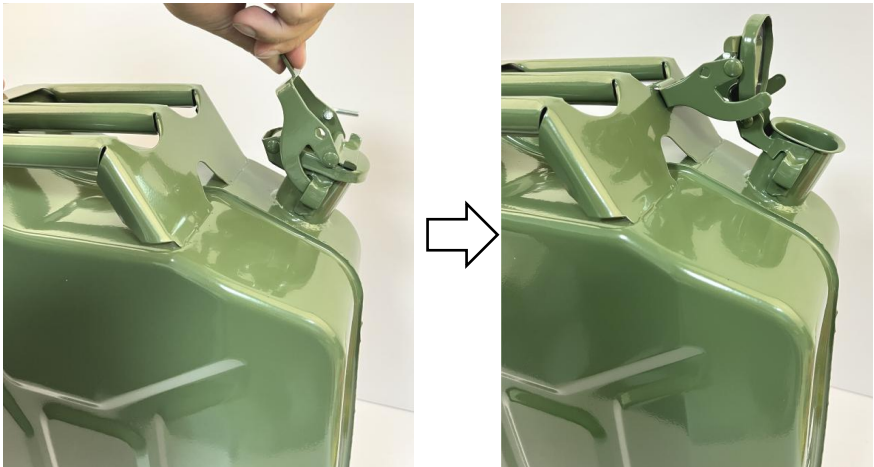
## OPERATING INSTRUCTIONS

### Installation preparation:

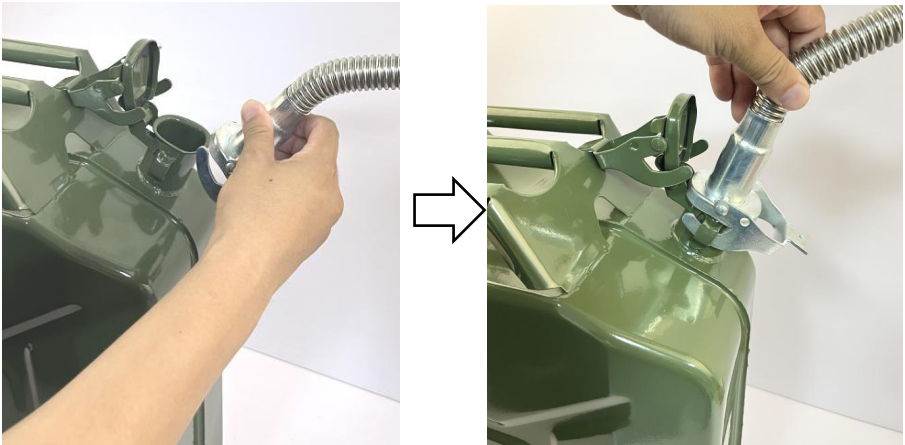
1. Please prepare gloves to avoid being scratched by sharp parts that may occur during installation.
2. Please open all the boxes to check that the accessories are complete and in good condition.

### Gas Can Operation:

1. Pull the latch up and open the cap.



2. As shown in the drawing, install the spout, tighten the latch.  
Note: The spout shall be fitted with a sealing ring.



3. The spout can be bent at any angle when refueling



## MAINTENANCE

1. Always keep the product outside clean; oil pollution will affect the product's life.
2. Do not throw or drop the product.
3. When storing and using, avoid the sharp point of the hard object scratch products.
4. Please store the product in a dry and ventilated place. Do not put the product outdoors for a long time.
5. If not used for a long time, please empty the tank and clean it.

**Manufacturer:** Shanghaimuxinmuyeyouxiangongsi

**Address:** Shuangchenglu 803nong11hao1602A-1609shi, baoshanqu, shanghai 200000 CN.

**Imported to USA:** Sanven Technology Ltd, Suite 250, 9166 Anaheim Place, Rancho Cucamonga, CA 91730

EC	REP
----	-----

E-CrossStu GmbH  
Mainzer Landstr.69, 60329 Frankfurt am Main.

UK	REP
----	-----

YH CONSULTING LIMITED.  
C/O YH Consulting Limited Office 147, Centurion House,  
London Road, Staines-upon-Thames, Surrey, TW18 4AX

**VEVOR<sup>®</sup>**

**TOUGH TOOLS, HALF PRICE**

**Technical Support and E-Warranty Certificate**

**[www.vevor.com/support](http://www.vevor.com/support)**