

VEVOR[®]

TOUGH TOOLS, HALF PRICE

Technical Support and E-Warranty Certificate

www.vevor.com/support

PORTABLE PRESSURE WASHER

MODEL: HY49P

We continue to be committed to provide you tools with competitive price.

"Save Half", "Half Price" or any other similar expressions used by us only represents an estimate of savings you might benefit from buying certain tools with us compared to the major top brands and does not necessarily mean to cover all categories of tools offered by us. You are kindly reminded to verify carefully when you are placing an order with us if you are actually saving half in comparison with the top major brands.

VEVOR[®]

TOUGH TOOLS, HALF PRICE

PORTABLE PRESSURE WASHER

MODEL: HY49P



NEED HELP? CONTACT US!

Have product questions? Need technical support? Please feel free to contact us:

Technical Support and E-Warranty Certificate
www.vevor.com/support

This is the original instruction, please read all manual instructions carefully before operating. VEVOR reserves a clear interpretation of our user manual. The appearance of the product shall be subject to the product you received. Please forgive us that we won't inform you again if there are any technology or software updates on our product.



WARNING: To reduce the risk of injury, the user must read and understand the instructions before using this product.

SAVE THESE INSTRUCTIONS FOR FUTURE REFERENCE

INTRODUCTION

Congratulations on the purchase of your PRESSURE WASHER!

Your PRESSURE WASHER is a power tool in every sense of the word that may be used out-and inside your house.

It is one of the finest most powerful household power washers on the market today. Please familiarize yourself with the following assembly, operating and safety information.

Read this manual before using the power washer. Failure to follow these instructions could cause personal injury, property damage, or both. Save this manual for other users to read prior to using the power washer.

SAFEGUARDS, WARNINGS AND SAFETY TIPS

IMPORTANT SAFETY INSTRUCTIONS, SAVE THESE INSTRUCTIONS

WARNING – When using this product basic precautions should always be followed, including the following:

1. To avoid personal injury and/or damage to property and to maximize your power washing experience, carefully follow all of the safety tips, instructions, warnings and safeguards and become familiar with all of the controls. Be sure you know how to quickly bleed off the pressure from all parts of your power washer, and how to turn off the power washer.
2. This power washer conforms and other safety and consumer standards. Do not modify or rebuild any part of your power washer.
3. Do not use your power washer when you are under the influence of alcohol or drugs. Use this power tool carefully and only when you are alert.
4. Watch your balance and footing while using your power washer. Surfaces become slippery when wet and are extra slippery when using a detergent or cleaner.
5. Never operate the power washer in bare feet, sandals, or open-toed shoes.
6. When using the power washer near children make sure they are closely supervised by an adult to avoid injury. Never let a child use the power washer.

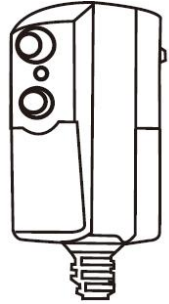
7. When you press the power switch to turn off the power washer, water pressure may remain in the system. To discharge the pressure, point the spray gun in a safe direction and pull the trigger.
8. Never spray flammable liquids.
9. Never use the power washer in areas that contain combustible dust, liquids or vapors.
10. Keep operating area clear of all persons.
11. Do not overreach or stand on unstable support. Keep good footing and balance at all times.
12. Follow the maintenance instructions specified in the manual.
13. Avoid contact of the pressure hose with sharp objects and examine the hose regularly. Replace if damaged. Due to the high pressure involved, it cannot be repaired if cut or damaged.
14. Only use detergent specifically formulated for power washers and follow instructions on the detergent's label.
15. Power washer detergents are available at your local hardware store.
16. Protect eyes, lungs, and skin from exposure to detergent. Dish or laundry soap is too thick and will clog the nozzle of your detergent tank.
17. **WARNING:**Risk of Injection or Injury–Do Not Direct Discharge Stream At Persons.
WARNING: If Connection Is Made To A Potable Water System, The System Shall Be Protected Against Back flow.
18. Never use hot water with your power washer. It will overheat and damage the high pressure pump.
19. **IMPORTANT:** Store the power washer indoors to prevent the water in the unit from expanding under freezing conditions. When the water freezes and expands, your power washer will be damaged and become inoperable. After disconnecting the water supply And before disconnecting the high pressure hose Turn the pressure washer on for 2-3seconds, Turn the unit off immediately.
20. Never leave the power washer unattended while it is powered“ on”.
21. Always turn the water supply“ on ” before turning the power washer power to “on”. Running the pump dry will cause damage to the internal components.
22. Never use a water supply to your power washer that exceeds 150 psi

maximum.

23. Keep fingers, hands, feet and any part of your body clear of the stream of high pressure water. The powerful spray can cause blindness or blast holes in the skin. It can break a window if you are too close when you pull the trigger on the spray gun.
24. Always wear eye protection to prevent injury to eyes when operating the power washer.
25. To avoid mishaps or injury, always use the trigger safety lock when not using the power washer even if the spraying stops for a moment.
26. The power washer is equipped with a Ground Fault Circuit Interrupter (GFCI) Built Into The Power Cord Plug which greatly reduces the chance of electric shock while the unit is in use. If Replacement Of The Plug Or Cord Is Needed, Use Only Identical Replacement Parts.
27. Point the spray gun in a safe direction when beginning a power washing session.
28. When first using the spray gun, hold the spray gun and lance with two hands when pulling the trigger until you get used to the “kick back” from the spray gun (one hand to pull the trigger and the other to stabilize the gun assembly).
29. Never disconnect the high pressure hose from the power washer while the system is pressurized.
30. Never permanently engage the trigger mechanisms on the spray gun.
31. Never operate the power washer unless all components are properly and securely connected.
32. Never allow the power washer pump to Run for more than one minute, after you have contain combustible dust, liquids or vapors. turned off the water supply.This can cause the motor and pump to overheat and fail.
33. Never use lances or other parts that have not been supplied with your power washer.
34. Never use an extension power cord since it defeats the effectiveness of the GFCI and increases the chance of electrocuting the operator.
35. Never spray any electrical outlet with your power washer.
36. Inspect the power cord before using. Do not use it if it is damaged.

GROUND FAULT CIRCUIT INTERRUPTER PROTECTION

This pressure washer is provided with a ground-fault circuit-interrupter (GFCI) built into the plug of the power-supply cord. This device provides additional protection from the risk of electric shock. Should replacement of the plug or cord become necessary, use only identical replacement parts that include GFCI protection.



SERVICING OF A DOUBLE-INSULATED APPLIANCE

In a double-insulated product, two systems of insulation are provided instead of grounding. Grounding means are not provided for a double-insulated product, nor should grounding means be added to the product. Servicing a double-insulated product requires extreme care and knowledge of the system, and should only be done by qualified service personnel. Replacement parts for a double-insulated product must be identical to the original parts. A double-insulated product is marked with the words “Double Insulation” or “Double Insulated”. Product may also be marked with symbol shown below.



TECHNICAL DATA

Model	HY49P
Rated voltage	120V
Rated current	13A
Rated pressure	1450PSI
Max. pressure	2150PSI
Max. water inlet temperature	104°F
Rated flow	1.2GPM
Machine weight	6.6kg

UNPACKING

1. Handle	2. Power cord holder	3. Power cord
4. Water inlet	5. ON/OFF Switch	6. Gun holder
7. Water outlet	8. Nozzle storage	9. Gun
10. Spray lance	11. Metal nozzles (0°/15°/25°/40°) and Turbo Nozzle	12. Detergent Bottle
13. High pressure hose	14. Cleaning pin	15. Water inlet connector
16. Screws package	17. Manual	



attached on the machine



17

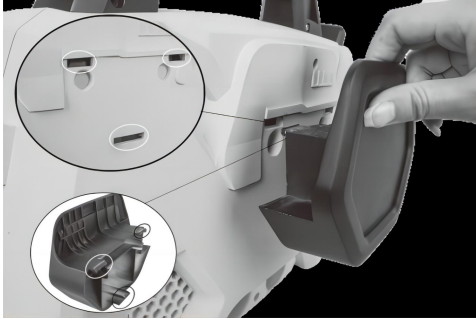


PREPARATION OF OPERATION

HOW TO SET UP YOUR UNIT

Step 1 Install gun holder

Attach the gun holder on the back of the machine.



Step 2 Install power cord holder

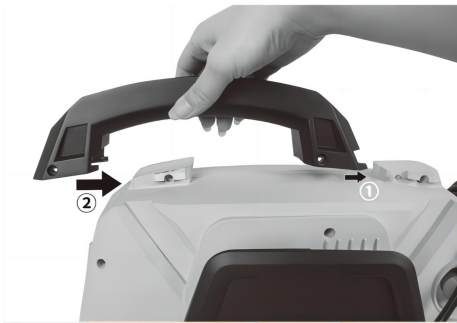
Slide the power cord holder on the left of the machine.



Step 3 Mounting the handle

Slide the handle on the top of the machine.(1 screws M4*16mm)

Note: The screws will be packed together with the manual, pls kindly check and find it when unpacked.

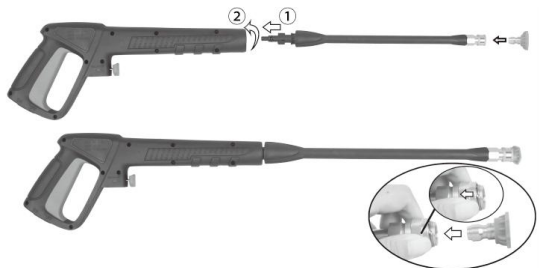


Step 4 Attach the quick lance to gun

A. Attach the quick lance to gun

Note: When attaching, align the two projections on the lance with the grooves on the gun.

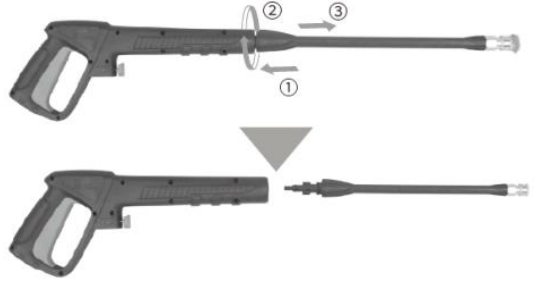
B. Attach the nozzle to the spray lance.



••• Pull out the lance. •••

① Push the lance against the spray gun.

②③ Rotate the lance and pull it out of the spray gun.



Step 5 Screw the high pressure hose onto the water outlet pipe.

Push and turn (clockwise) it tight to avoid leakage. When the pieces are joined

properly, you cannot separate the two components by pulling straight out from the water outlet.

CAUTION: Prior to operating the machine, please ensure that the high pressure hose has been completely uncoiled.

Whilst the machine is in operation, the high pressure hose MUST NOT loop.



Step 6 Attach the other high pressure hose to the gun.

Note: After the high pressure hose is connected, check the connection by gently pulling on the hose to ensure it stays connected. Push the lock button and pull to detach the high pressure hose.

For detaching the hose easily, please pull the trigger to drain water from wand when operation is completed and switch is in " OFF/0 " position.

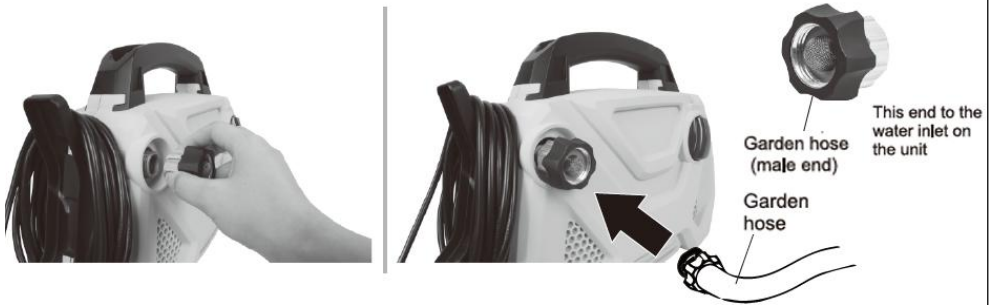


Push button to remove the hose

Step 7 Attach the garden hose

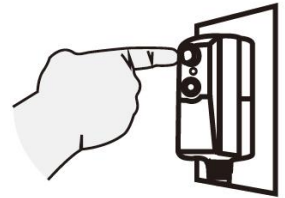
Connect one end of the home garden hose (not supplied) to the adapter and another end to water source.

WARNING: The appliance is INTENDED to be used at a temperature above 0 degree.



Step 8 Connect to the power supplier

- (1) Plug the pressure washer into the power outlet.
- (2) Press TEST button, power will be cut and indicator will fade. Do not use if this test fails. We recommend you to press the test button every time before using pressure washer to ensure the protector works.
- (3) Press the RESET button the indicator will illuminate, power on for use.



OPERATING

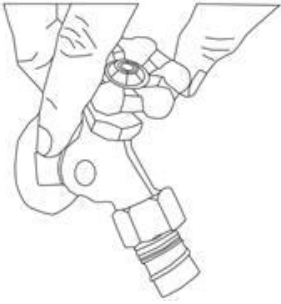
TO WASH WITH WATER

Step 1 Turn on the water supply tap

Connect the washer to the power supply and turn the switch to “ ON/I ” position. Then press trigger.

Note: Before pressing trigger, make sure lock-off switch is in “ unlock ” position.

Warning: Do not start the machine without connecting and turning on the water supply because it may cause damage to high pressure seals and reduce the service life of pump.



Step 4 Attach the quick lance to gun

Turn off the water supply tap.

Note: When not in use, make sure Lock-off switch is in “ Lock” position.



Step 3 Select the right nozzles

The gun is equipped with 4 kinds of quick connect nozzle(0°, 15°, 25°, 40°), 4 type of water jet shape shown as follow. Pleas turn off the gun when changing nozzle, Move the stop ring of the quick connector seat on the spray gun by left hand, and install the quick connect nozzle onto spray gun quickly, loose the stop ring, and push back to original position.



0°nozzle (red)

15°nozzle(yellow)

25°nozzle(green)

40° nozzle(white)

- **Warning:** High pressure jets can be dangerous if subject to misuse. The jet must not be directed at persons, live electrical equipment or the appliance itself.

- **Warning:** Do not direct the jet against yourself or others in order to clean clothes or foot-wear.
- **Warning:** Spray gun must be turned off when changing nozzles

Step 4 Cleaning

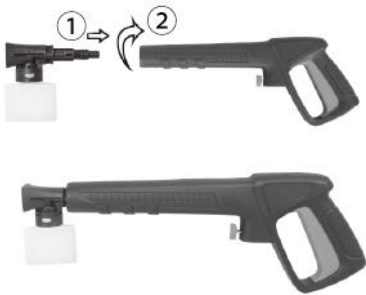
Begin with the nozzle 1-2ft away from the surface and approach with caution until it reaches the desired position for overly close spray may do harm to surface.
 Warning: Do not connect the machine to water supplies that are dirty, rusty, muddy, or corrosive. (Including window cleaning liquids, plant foods, or fertilizers etc.)



*This picture is for use only, please refer to the actual machine you purchased.

Step 5 Add and use detergent

a. Fill it with a properly formulated detergent or cleaner with a water ratio according to instructions on the container. connect nozzle to wand.



Hang the hook of the bottle on the right of the machine.



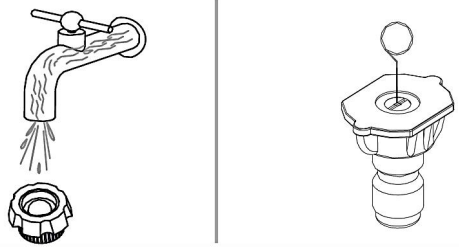
- Squeezel the wand trigger, detergent will come out through the nozzle.
- Apply detergent so it thoroughly covers cleaning surface.
- Allow detergent to remain on the surface for a few minutes. This is a good time to use a brush to lightly scrub heavily soiled areas.
- Change to spray nozzle, Rinse detergent from surface.
- Cleaning up: Always draw fresh water through the detergent bottle when done to flush any remaining detergents from the injection system. The bottle could be detached if necessary in this process.

MAINTENANCE

WATER FILTER AND NOZZLE CLEANING INSTRUCTIONS

A clogged or partially clogged water filter or nozzle can cause significant reduction of water pressure coming out of the nozzle and/or cause the unit to pulsate while spraying.

1. The water filter was installed inside the water inlet quick connector, should be cleaned periodically. Rinse it with clean tap water, and then place it back into the water inlet quick connector.



2. Using the nozzle tip cleaner provided (or an unfold paper clip), insert the wire into the nozzle hole and move back and forth until debris is dislodged. Back flush water through the nozzles using garden hose and highest pressure available (either standard water nozzle or use your thumb over the nozzle to create water pressure for back flush).

STORAGE

Do not store pressure washer outdoors.

Do not store pressure washer where it might freeze while there's water inside the machine.

Serious damage will occur to the water system, pump and / or motor.

TIPS FOR EXTENDING THE LIFE OF YOUR PRESSURE WASHER

1. Never operate machine without water.
2. Pressure washer is not meant to pump hot water. Never connect to hot water supply this will significantly reduce life of the pump.
3. Using detergent other than those formulated for pressure washers may cause damage to pump components (o-rings, etc.). This also applies to chemicals such as bleach, dish soap, etc.
4. Never operate unit for more than one minute without spraying water. Resulting heat buildup.

TROUBLESHOOTING AND FAQs

<p>Unit will not turn on.</p>	<p>Make sure the washing machine is in the "off" position. Plug the power cord into a grounded 120 volt outlet (extension cords should not be used). If the power cord does not plug into your outlet, your outlet is not properly grounded and should not be used. Use another power outlet. Press the reset button on the GFCI power box. If you don't see the light on in the GFCI's little window, unplug and plug it back in. Press reset, and if the light is on, turn the power switch on the power washer to "ON". Press the trigger on the gun and try again.</p> <p>If that doesn't fix the problem, try plugging into another power outlet and repeat the process.</p>
<p>The high pressure(HP) hose will not connect/stay connected to the spray gun. Is this a spray gun problem?</p>	<p>In most cases, the spray gun is not the problem. The problem is the rubber sleeve covering the fitting at the end of the high pressure hose. It has likely slipped up toward the metal tip. The fix:wiggle, twist and/or pull the rubber sleeve down until the entire tip is visible plus an 1/8" of the metal fitting below the tip. Now try to insert the hose tip into the spray gun. It should "click"into place and will not come out until the hose is released by pushing in the lever on the underside of the gun.</p> <p>You may cut away the end of the sleeve with a sharp knife if unable to move the sleeve down . Be careful not to cut or puncture the hose.</p>
<p>The unit is running but there is not water flow.</p>	<p>Check the water source. Unclog the nozzle on the lance. (See nozzle cleaning instructions under " Cleaning nozzles".) Or take off the lance and just spray out of the spray gun. This will indicate of the problem is with the lance.</p>
<p>Why is water leaking where the high pressure hose connects to the spray gun?</p>	<p>Make sure there is an o-ring at the end of the metal tip of the high pressure hose. If no o-ring is present, the connection between the hose and spray gun will leak.</p>

<p>I can't remove the lance from the spray gun. What should I do?</p>	<p>All lances and detergent tank are attached and removed from the spray gun in the same manner. Insert the quick-release end of the lance together (about a 1/8") and turn clockwise. The lance will lock in place. Remove the lance by reversing this procedure. Press the spray gun and lance together and turn counter clockwise. The lance will slide out. Or, hold the spray gun and lance in an upright position with the nozzle end on the floor. Push the whole assembly straight down to loosen the connection, and then follow the removal process again. You may also spray soapy water or a lubricant in the area where the lance connects to the spray gun.</p>
<p>The power washer turns on for 2 seconds, shuts off, and will not turn back on. Do I have a defective unit?</p>	<p>It sounds like your power washer is working just fine. When the water is connected, the accessories are assembled properly, and the power switch is turned on, the power washer may turn on for 1-2 seconds to prime the pump. It automatically shuts off and waits for the spray gun trigger to be pressed. When the trigger is pressed, water starts flowing water through the pump.</p> <p>The water sensor in the pump "senses" the moving water and automatically turns the power washer on. Or, turn the power switch to off, hold in the trigger on the spray gun, so that you have a steady stream of water. While you are holding the trigger open on the spray gun, at the same time, turn the power switch on.</p>

Made In China

VEVOR[®]

TOUGH TOOLS, HALF PRICE

Technical Support and E-Warranty Certificate

www.vevor.com/support