

# **VEVOR<sup>®</sup>**

## **TOUGH TOOLS, HALF PRICE**

Technical Support and E-Warranty Certificate [www.vevor.com/support](http://www.vevor.com/support)

### **LED POSTER USER MANUAL**

We continue to be committed to provide you tools with competitive price.

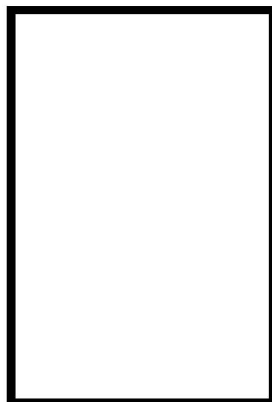
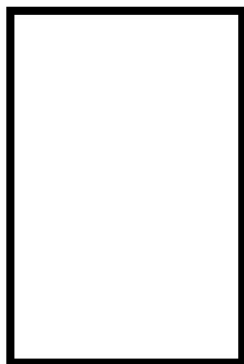
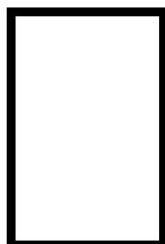
"Save Half", "Half Price" or any other similar expressions used by us only represents an estimate of savings you might benefit from buying certain tools with us compared to the major top brands and does not necessarily mean to cover all categories of tools offered by us. You are kindly reminded to verify carefully when you are placing an order with us if you are actually saving half in comparison with the top major brand.

# VEVOR®

TOUGH TOOLS, HALF PRICE

## LED Poster

Model: 1530



### NEED HELP? CONTACT US!





Have product questions? Need technical support? Please feel free to contact us:

**Technical Support and E-Warranty Certificate**  
**[www.vevor.com/support](http://www.vevor.com/support)**

This is the original instruction, please read all manual instructions carefully before operating. VEVOR reserves a clear interpretation of our user manual. The appearance of the product shall be subject to the product you received. Please forgive us that we won't inform you again if there are any technology or software updates on our product.

## PRODUCT PARAMETERS

Model	Product Size(LxWxH)	Display area	voltage	power
1530	610x406x15mm	560x356mm	DC 12V	20W
	914x 610x15mm	864x560mm	DC 12V	24.8W
	1016x686x15 mm	960x632mm	DC 12V	26.2W

	<b>Warning-</b> To reduce the risk of injury, user must read instructions manual carefully.
 	<b>CORRECT DISPOSAL</b> This product is subject to the European Directive 2012/19/EC provision. The symbol showing a wheeled bin crossed through indicates that the product requires separate refuse collection in the European Union. This applies to the product and all accessories marked with this symbol. Products marked as such may not be discarded with normal domestic waste, but must be taken to a collection point for recycling electrical and electronic devices
	This product is of protection class III.

Thank you for purchasing the LED poster produced by my company. After opening the product packaging, check whether the product is intact, whether the accessories are complete, and whether it can shine normally after powering on

## USE PRECAUTIONS



### **WARNING:**

1. **TO PREVENT SERIOUS INJURY AND DEATH FROM TIPPING:** This product is not a toy. Do not allow children to play with or approach this item.
2. Use as intended only. Do not stand on the product.
3. **TO AVOID ELECTRICAL SHOCK, DO NOT** put liquid of any kind into the Main Unit Housing containing the electrical components.
4. When installing and using, check whether the nails installed on the wall are firm
5. When replacing a poster, be sure to disassemble the product and place it on a table or floor before replacing the poster.
6. For your safety, please do not disassemble or modify the product

### **SAVE THESE INSTRUCTIONS**

## **FCC Information**

**CAUTION:** Changes or modifications not expressly approved by the party responsible for compliance could void the user's authority to operate the equipment!

This device complies with Part 15 of the FCC Rules. Operation is subject to the following two conditions:

- 1) This product may cause harmful interference.
- 2) This product must accept any interference received, including interference that may cause undesired operation.

**WARNING:** Changes or modifications to this product not expressly approved by the party responsible for compliance could void the user's authority to operate the product.


**Note:** This product has been tested and found to comply with the limits for a Class B digital device pursuant to Part 15 of the FCC Rules, These limits are designed to provide reasonable protection against harmful interference in a residential installation.

This product generates, uses and can radiate radio frequency energy, and if not installed and used in accordance with the instructions, may cause harmful interference to radio communications. However, there is no guarantee that interference will not occur in a particular installation. If this product does cause harmful interference to radio or television reception, which can be determined by turning the product off and on, the user is encouraged to try to correct the interference by one or more of the

following measures.

- Reorient or relocate the receiving antenna.
- Increase the distance between the product and receiver.
- Connect the product to an outlet on a circuit different from that to which the receiver is connected.
- Consult the dealer or an experienced radio/TV technician for assistance.

## PARTS LIST

	<p>① Self-tapping screws x 8</p> <p>② Rubber stopper x 8</p> <p>③ Screws x 8</p> <p>④ Hooks x 4</p> <p>⑤ Switch x 1</p> <p>⑥ Suction cups x 1</p> <p>⑦ Adapter x 1</p> <p>⑧ Power cord x 1</p>
<p>Note: The voltage matching power cord ⑧ is not the same in different countries, please refer to the actual situation.</p>	

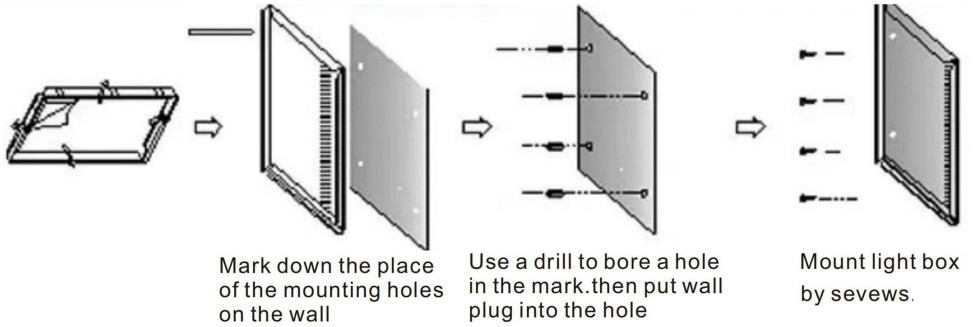
## PRODUCT INTRODUCTION



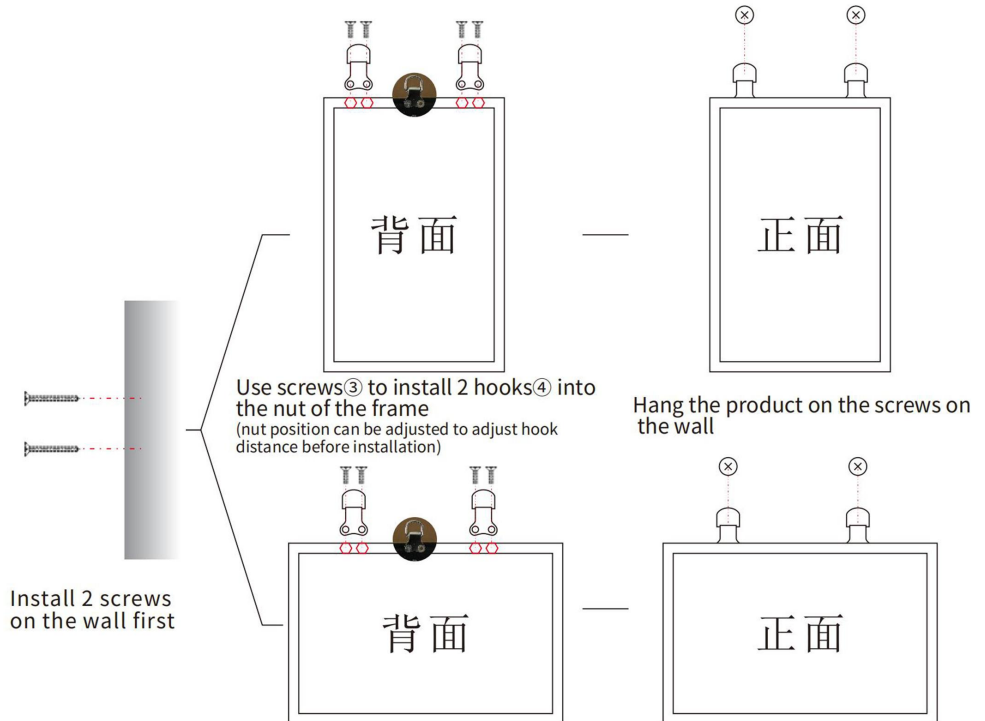
1. Configure 8 nuts, 4 on the short side and 4 on the long side  
(For mounting hooks nut adjustable position left and right)
2. Equipped with 4 wall mounting holes, 2 on each side  
(for fixing to the wall)

# INSTALLATION

## Way 1: Use screws for wall mounting



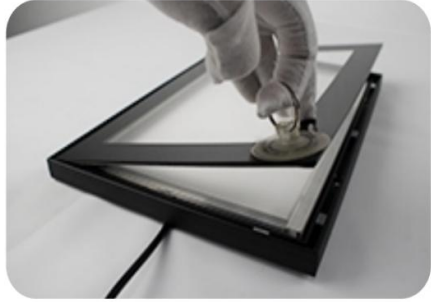
## Way 2: Use hooks to mount



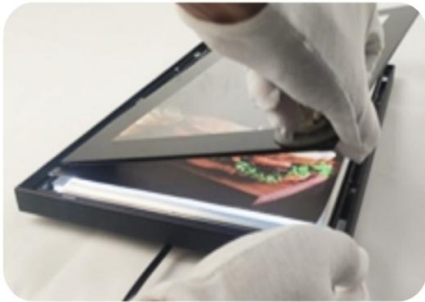
## POSTER REPLACEMENT



① Take out the suction cups



② Suck the corner position of the panel with the suction cup



③ Pull the panel out



④ Place posters



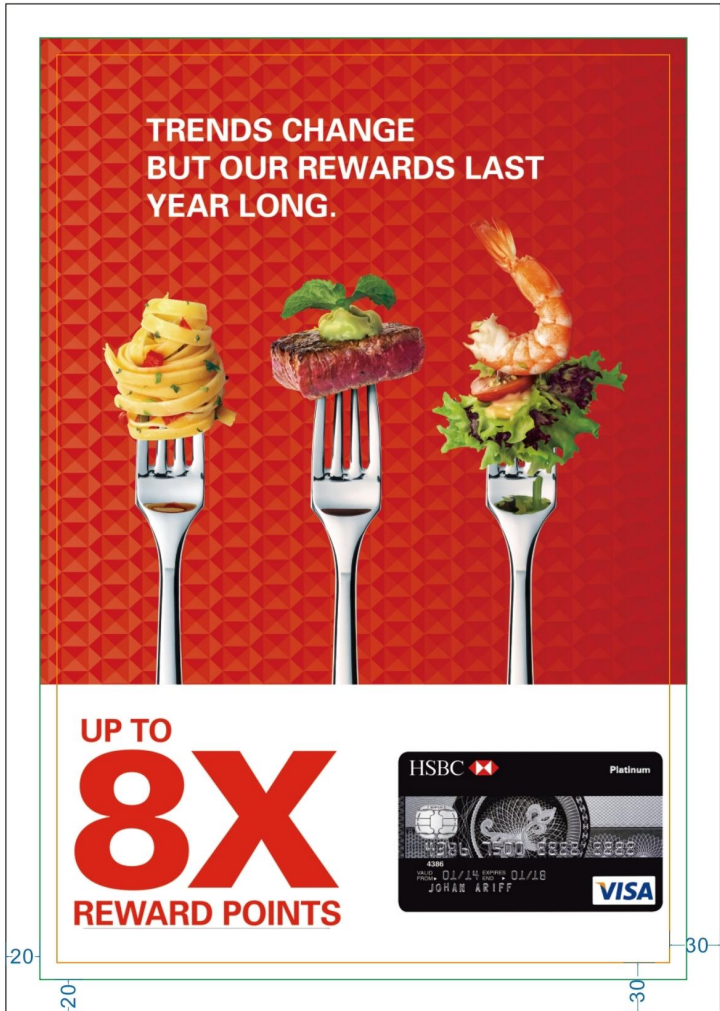
⑤ Install the panel back



⑥ Power on



## POSTER INFORMATION



Unit: mm

1. Poster size (green line) and width 40mm smaller than light box (20mm on one side)
2. The main content of the poster is controlled inside the window size (yellow line).
3. The poster recommends PET material

## **CLEANING AND MAINTENANCE**

---

-For cleaning, wipe the surface with a damp (not wet) cloth or wipe dry with a clean lint free cotton cloth.

-When wiping, pay attention to choose a soft cloth or towel to avoid scratching the panel and affecting the display quality

**Manufacturer:** Shanghaimuxinmuyeyouxiangongsi

**Address:** Shuangchenglu 803nong11hao1602A-1609shi,  
baoshanqu, shanghai 200000 CN.

**Imported to AUS:** SIHAO PTY LTD. 1 ROKEVA  
STREETEASTWOOD NSW 2122 Australia

**Imported to USA:** Sanven Technology Ltd. Suite 250, 9166  
Anaheim Place, Rancho Cucamonga, CA 91730

<b>EC</b>	<b>REP</b>
-----------	------------

E-CrossStu GmbH  
Mainzer Landstr.69, 60329  
Frankfurt am Main.

<b>UK</b>	<b>REP</b>
-----------	------------

YH CONSULTING LIMITED.  
C/O YH Consulting Limited Office 147,  
Centurion House, London Road,  
Staines-upon-Thames, Surrey, TW18 4AX

**VEVOR<sup>®</sup>**

**TOUGH TOOLS, HALF PRICE**

**Technical Support and E-Warranty Certificate**  
**[www.vevor.com/support](http://www.vevor.com/support)**