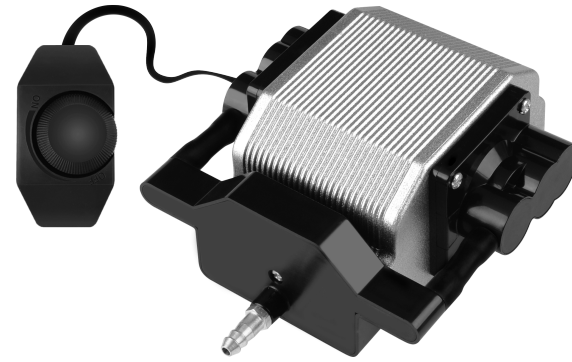


size:110x148mm 白色双胶纸80g 风琴折

VEVOR® POND AERATION
TOUGH TOOLS, HALF PRICE

MODEL: AP-20A



NEED HELP? CONTACT US!

Have product questions? Need technical support? Please feel free to contact us:

Technical Support and E-Warranty Certificate www.vevor.com/support

This is the original instruction, please read all manual instructions carefully before operating. VEVOR reserves a clear interpretation of our user manual. The appearance of the product shall be subject to the product you received. Please forgive us that we won't inform you again if there are any technology or software updates on our product.

- 1 -

	Warning-To reduce the risk of injury, users must read the instruction manual carefully.
	This device complies with Part 15 of the FCC Rules. Operation is subject to the following two conditions:(1)This device may not cause harmful interference, and (2)this device must accept any interference received, including interference that may cause undesired operation.

IMPORTANT SAFETY INSTRUCTIONS

WARNING:

Read all safety warnings, instructions, illustrations and specifications provided with this pond aeration. Failure to follow all instructions listed below may result in electric shock, fire and/or serious injury.

Basic Safety Information:

1. This product is for pumping up only.
2. Pulling or dragging the product with the power line is not allowed.
3. When pulling out the plug, please hold the plug itself; do not pull the Power line.
4. Do not cut and replace the power plug by yourself. Otherwise, serious consequences may incur.
5. Operation of the product is not allowed in case of damage to the power line or the shell.
6. Disassembling and dismantling of the product by lay-people is not allowed.
7. In case the pond aeration drops into water, please cut off the power supply before dredging it out. Then it should be handed over to professionals for check and maintenance.

- 2 -

8. Electrical shock hazard: Do not touch the pond aeration with wet hands or while standing on a wet surface. Always use the pond aeration in a dry environment and plug it into a properly grounded outlet.

9. Fire hazard: Do not use the pond aeration near flammable or combustible materials. Keep the pond aeration away from sources of heat or sparks, such as flames, cigarettes, or electrical appliances.

10. Explosion hazard: Do not use the pond aeration with gases that are flammable, explosive, or poisonous. Always check the safety data sheet (SDS) of the gas before using it with the pond aeration. Additionally, do not exceed the specified pressure range for the pond aeration.

11. Corrosion hazard: Do not use the pond aeration with gases that can corrode metals or exert chemical charges. Check the compatibility of the gas with the materials of the pond aeration and its accessories. Always use protective gloves and eyewear when handling corrosive materials.

12. Do not use a damaged plug or outlet, as this can cause electrical shock or fire.

13. If the supply cord is damaged, it must be replaced by the manufacturer, its service agent or similarly qualified persons in order to avoid a hazard.

14. This appliance can be used by children aged from 8 years and above and persons with reduced physical, sensory or mental capabilities or lack of experience and knowledge if they have been given supervision or instruction concerning the use of the appliance in a safe way and understand the hazards involved. Children shall not play with the appliance. Cleaning and user maintenance shall not be made by children without supervision.

- 3 -

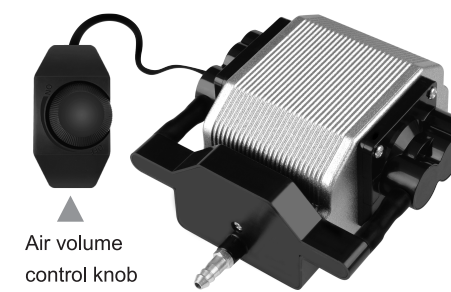
SAVE THESE INSTRUCTIONS

Basic parameters

Package size (mm)	225×170×230
Size (mm)	120×120×70
N.W (kg)	2.1
G.W (kg)	2.3
Voltage	AC 110V 60Hz
Power (W)	10
Gas flow (GPH)	285
Discharge pressure (MPa)	0.02
Noise (dB)	≤45
Optimum working temperature	5°C-35°C
Service life	2 years
No. of Air outlet	1
External Diameter of air jet (mm)	8
Distributor	1 in and 4 out

BUTTON FUNCTIONS

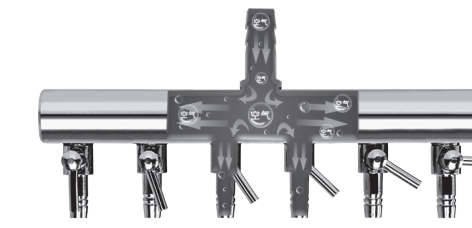
Button Functions



Air volume control knob

- 4 -

The splitter regulates the volume of gas.



Shunt valve design allows more air circulation



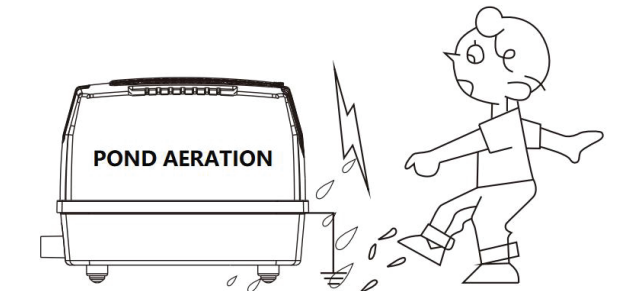
The figure only shows 6 valves. Please pay attention to the delivery model in the package if you need to buy

1. **Air volume control knob:** Turn this knob to adjust the volume of air.
2. **Valve switch:** Turn the switch to adjust the air volume from the pond aeration.

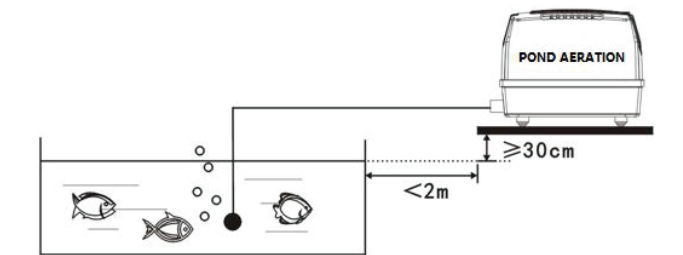
OPERATION

1. Working Voltage: Use 110VAC, single phase and 60Hz. The pond aeration working at lower voltage (100VAC) or higher voltage(120VAC) will be deemed as improper operation, and this will likely cause pond aeration damage.
2. Working Environment Temperature: 0° C-35° C with good and smooth ventilation to prevent high temperature.
3. Ground lead should be well connected before using the pond aeration. Touching the power source with wet hands is not allowed.

- 5 -



4. The safety distance between the pond aeration and the water side should be at least 2m, and the pond aeration must be at least 30cm above the liquid surface to prevent backward flow and etching and keep the pond aeration dry both inside and outside.

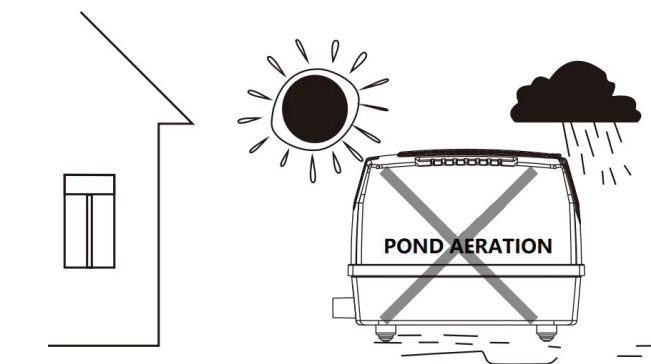


5. When placed outdoors, the pond aeration must be prevented from rainfall or solarization. Meanwhile, the pond aeration should be kept dry both inside and outside.

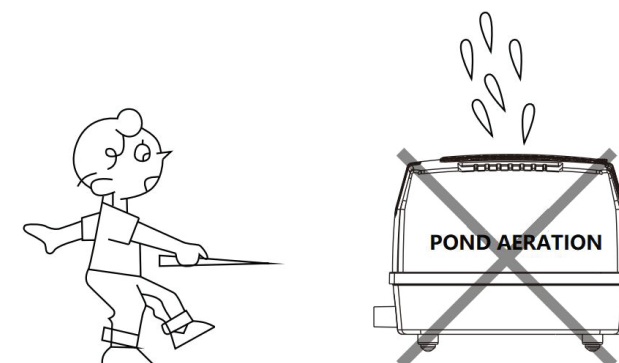
- 6 -

VEVOR®
TOUGH TOOLS, HALF PRICE

Technical Support and E-Warranty Certificate
www.vevor.com/support



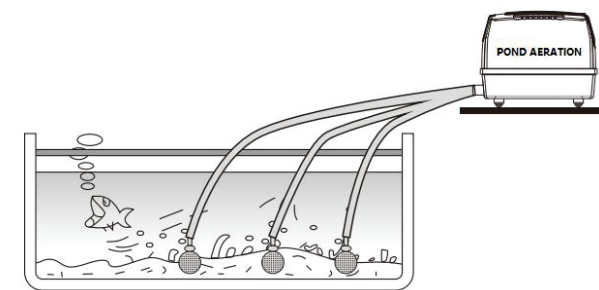
6. Oil injection or water injection, knocking or falling-off of the pond aeration should be strictly forbidden.



7. Please add air stones at the hose end to improve the oxygen dissolving rate. Please also reasonably adjust the effective depth of each air-expose hold under the water level to achieve even air distribution. The air stone should be replaced regularly to prevent sacking by algae or dirt, which,

- 7 -

when it happens, will result in back flow pressure and damage the pond aeration.



8. In case of less air, please check the following:

- 1)Whether the voltage is normal.
- 2)Whether the distributor or the connecting piece is damaged, air-leaking or sacked.
- 3)pond aeration location with poor ventilation will result in over-high temperature and less air volume.
9. Replace the filtration cotton, the packing cup and the valve block regularly to maintain air volume and pressure.
- 10.In case of abnormal power, please check the following:
 - 1) Whether the working voltage is beyond the specified range.
 - 2) Whether there is damage or air leakage at the air tube connections.
 - 3) Whether the valve block or the packing cup is damaged.
 - 4) pond aeration location with poor ventilation will result in an over-high temperature of the pond aeration and less air output.
- 11.In case of non-operation of the pond aeration, please check the following:

1) Whether the power line is damaged, whether there is verdigris, whether the connection becomes loose, or there is a power cut-off.

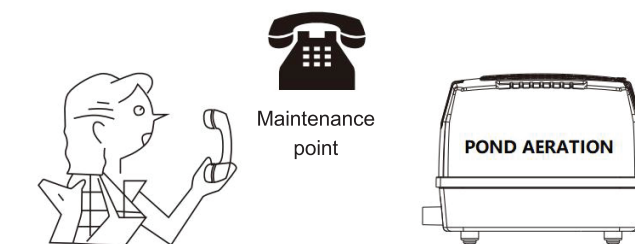
- 8 -

2) Whether the motor winding is abnormal.

12.When the pond aeration is not used, please pull the pipes out of the pond aeration and put the pond aeration in a dry location with good ventilation and free of exhaust gas. Run the pond aeration for 20 minutes every other week to keep the pond aeration in good condition.



13.In case of failure to solve the malfunction, please send it for repair timely.



Manufacturer: Shanghai muxinmuyeyouxiangongsi
Address: Shuangchenglu 803nong11hao1602A-1609shi, baoshanqu, shanghai 200000 CN.
Imported to USA: Sanven Technology Ltd., Suite 250,9166 Anaheim Place, Rancho Cucamonga, CA 91730

- 9 -

VEVOR®
TOUGH TOOLS, HALF PRICE

Technical Support and E-Warranty Certificate www.vevor.com/support

POND AERATION
MODEL:AP-20A

We continue to be committed to provide you tools with competitive price. "Save Half", "Half Price" or any other similar expressions used by us only represents an estimate of savings you might benefit from buying certain tools with us compared to the major top brands and does not necessarily mean to cover all categories of tools offered by us. You are kindly reminded to verify carefully when you are placing an order with us if you are actually saving half in comparison with the top major brands.