

VEVOR[®]

TOUGH TOOLS, HALF PRICE

Technical Support and E-Warranty Certificate www.vevor.com/support

ROLLING SIGNAGE

We continue to be committed to provide you tools with competitive price.

"Save Half", "Half Price" or any other similar expressions used by us only represents an estimate of savings you might benefit from buying certain tools with us compared to the major top brands and does not necessarily mean to cover all categories of tools offered by us. You are kindly reminded to verify carefully when you are placing an order with us if you are actually saving half in comparison with the top major brands.

VEVOR®

TOUGH TOOLS, HALF PRICE

ROLLING SIGNAGE






NEED HELP? CONTACT US!

Have product questions? Need technical support? Please feel free to contact us:

Technical Support and E-Warranty Certificate
www.vevor.com/support

This is the original instruction, please read all manual instructions carefully before operating. VEVOR reserves a clear interpretation of our user manual. The appearance of the product shall be subject to the product you received. Please forgive us that we won't inform you again if there are any technology or software updates on our product.

	<p>Warning-To reduce the risk of injury, user must read instructions manual carefully.</p>
	<p>Compliance is a EC security certification.</p>
	<p>CORRECT DISPOSAL This product is subject to the provision of European Directive 2012/19/EC. The symbol showing a wheelie bin crossed through indicates that the product requires separate refuse collection in the European Union. This applies to the product and all accessories marked with this symbol. Products marked as such may not be discarded with normal domestic waste, but must be taken to a collection point for recycling electrical and electronic devices</p>

IMPORTANT SAFEGUARDS

WARNING

READ THESE INSTRUCTIONS COMPLETELY AND CAREFULLY
WARNING: FAILURE TO FOLLOW THESE INSTRUCTIONS AND WARNINGS MAY RESULT IN DEATH, SERIOUS INJURY OR SIGNIFICANT PROPERTY DAMAGE. FOR YOUR PROTECTION, READ AND FOLLOW THESE WARNINGS AND INSTRUCTIONS CAREFULLY BEFORE INSTALLING OR MAINTAINING THIS EQUIPMENT. THESE INSTRUCTIONS DO NOT ATTEMPT TO COVER ALL INSTALLATION AND MAINTENANCE SITUATIONS. IF YOU DO NOT UNDERSTAND THESE INSTRUCTIONS OR ADDITIONAL INFORMATION IS REQUIRED, CONTACT THE MANUFACTURER.

IMPORTANT SAFEGUARDS: WHEN USING ELECTRICAL EQUIPMENT, BASIC SAFETY PRECAUTIONS SHOULD ALWAYS BE FOLLOWED, INCLUDING THE FOLLOWING:

1. Do not use outdoors.
2. Equipment should be mounted in locations and at heights where it will not be subject to tampering by unauthorized personnel.

3. Do not mount near gas or electric heaters. Keep combustible material away from hot parts.
4. Cap unused wires with enclosed wire nuts or other approved methods. Do not use this equipment for other than its intended use. The use of accessory equipment not recommended by the manufacturer will void warranty and may cause an unsafe condition.
5. Before wiring to power supply, turn off electricity at fuse or circuit breaker.
6. Use caution when servicing batteries.
7. Installation and servicing should be performed by qualified personnel. Consult local building code for approved wiring and installation. Make sure wire terminations are secure and leads are properly tucked in appropriate wire channels.

WARNING: NEVER CONNECT TO, DISCONNECT FROM, OR SERVICE WHILE EQUIPMENT IS ENERGIZED.

SAVE THESE INSTRUCTIONS

FCC INFORMATION

CAUTION:

Changes or modifications not expressly approved by the party responsible for compliance could void the user's authority to operate the equipment!

This device complies with Part 15 of the FCC Rules. Operation is subject to the following two conditions:

- 1) This product may cause harmful interference.
- 2) This product must accept any interference received, including interference that may cause undesired operation.

WARNING:

Changes or modifications to this product not expressly approved by the party responsible for compliance could void the user's authority to operate the product.

Note:

This product has been tested and found to comply with the limits for a Class B digital device pursuant to Part 15 of the FCC Rules, These limits are designed to

provide reasonable protection against harmful interference in a residential installation.

This product generates, uses and can radiate radio frequency energy, and if not installed and used in accordance with the instructions, may cause harmful interference to radio communications. However, there is no guarantee that interference will not occur in a particular installation. If this product does cause harmful interference to radio or television reception, which can be determined by turning the product off and on, the user is encouraged to try to correct the interference by one or more of the following measures.

- Reorient or relocate the receiving antenna.
- Increase the distance between the product and receiver.
- Connect the product to an outlet on a circuit different from that to which the receiver is connected.
- Consult the dealer or an experienced radio/TV technician for assistance.

PRODUCT PARAMETERS

MODEL	Electrical parameters	Pixel density	display resolution
P10-1696RGB	European Union: AC220-240V 50Hz EU PLUG	P10 (10mm distance between dots)	16 x 96 dots.
	North America: AC120V 60Hz US PLUG		
	Australia: AC220-240V 50Hz AUS PLUG		
P10-3296RGB	European Union: AC220-240V 50Hz EU PLUG	P10 (10mm distance between dots)	32 x 96 dots.
	North America: AC120V 60Hz US PLUG		
	Australia: AC220-240V 50Hz AUS PLUG		
P10-16128RGB	European Union: AC220-240V 50Hz EU PLUG	P10 (10mm distance between dots)	16 x 128 dots.
	North America: AC120V 60Hz US PLUG		
	Australia: AC220-240V 50Hz AUS PLUG		

P6-64160RGB	European Union: AC220-240V 50Hz EU PLUG	P6 (6mm distance between dots)	64 x 160 dots.
	North America: AC120V 60Hz US PLUG		
	Australia: AC220-240V 50Hz AUS PLUG		
P5-64128RGB	European Union: AC220-240V 50Hz EU PLUG	P5 (5mm distance between dots)	64 x 128 dots.
	North America: AC120V 60Hz US PLUG		
	Australia: AC220-240V 50Hz AUS PLUG		

Attachment: All models deliver a U disk with installation software (Suitable for windows),note that the software is not suitable for Apple computers

Software: Android mobile phone system, Apple mobile phone system.

THE FOLLOWING ARE THE OPERATION STEPS

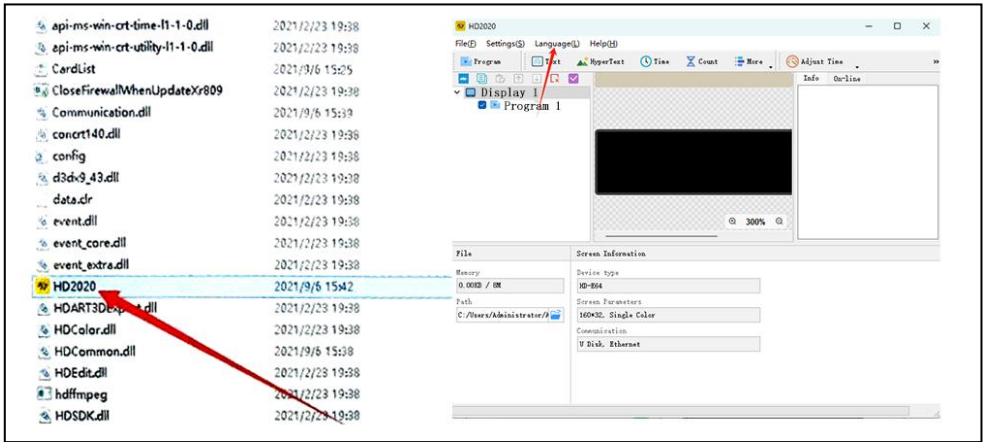
The following are the operation steps:

The computer operation steps:

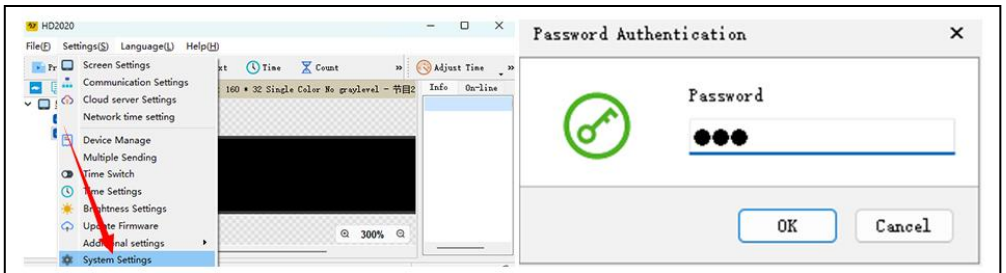
Step 1: insert the USB flash disk into the computer, open the USB flash disk, move the compressed file to the computer desktop for decompression (note that the software is not suitable for Apple computers)

Step 2: open the unzipped folder, find hd2020, and double-click to open it

Step 3: Click language to select a language type



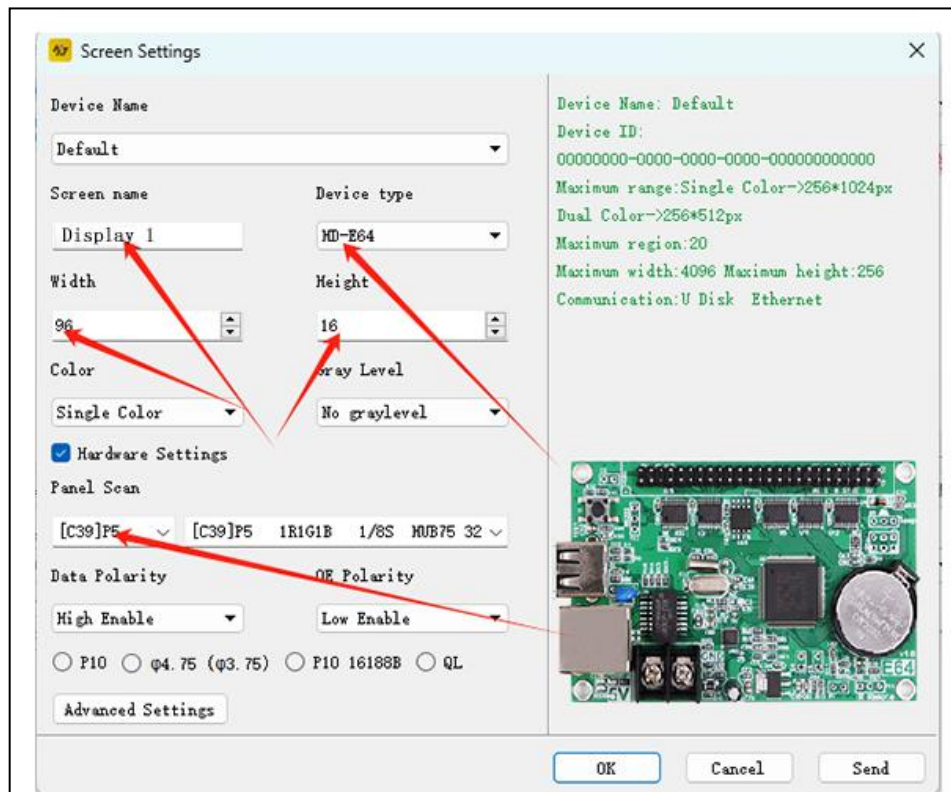
Step 4: Click Settings, select System Settings, enter password
The password is 168



Step5: Screen Setting : Width96, Height16
Device type: HD-WF1

Click Hardware Settings, Panel Scan : (C39)

After all settings are completed, click OK

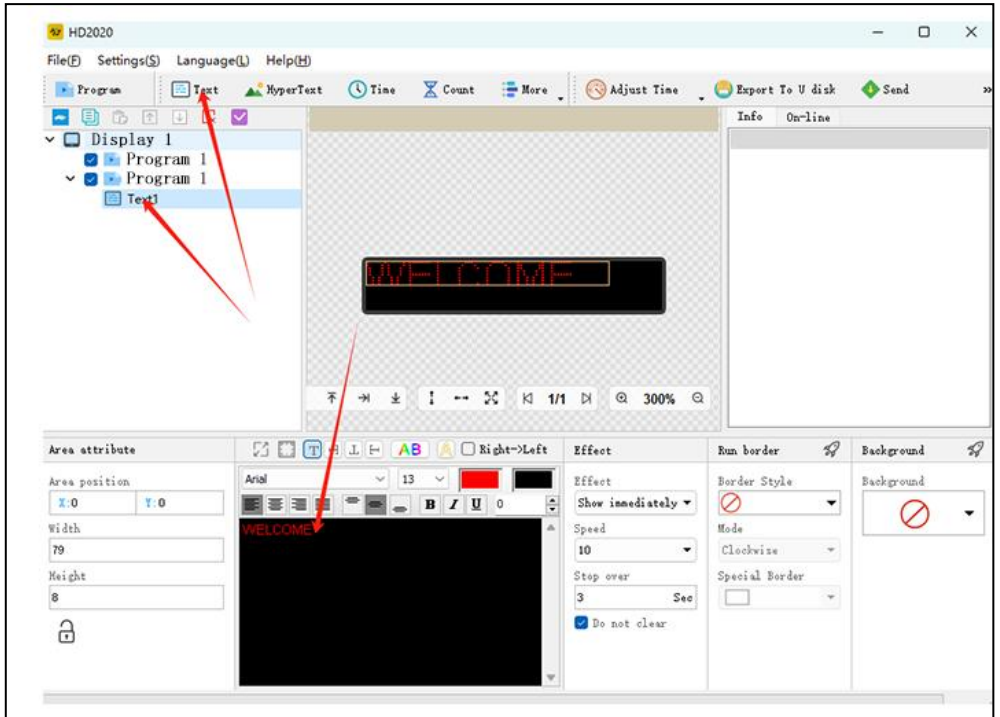


Step 6: click the text

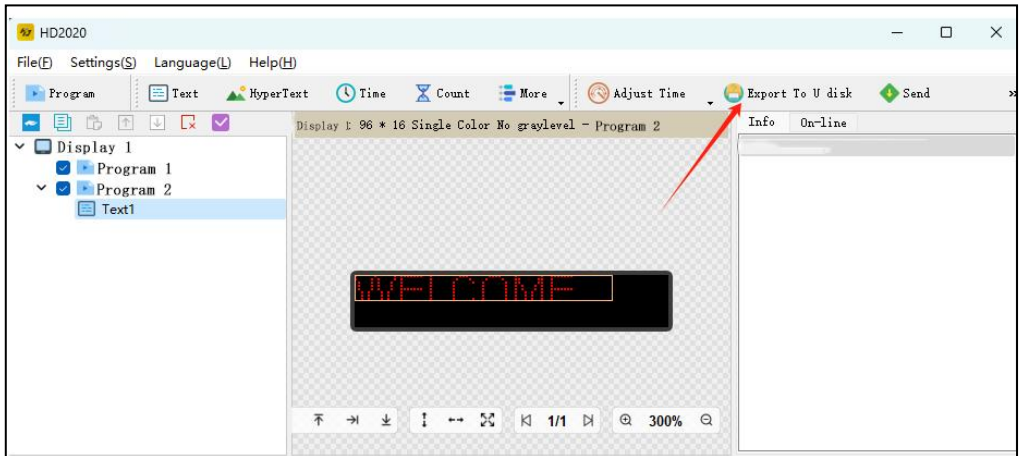
Step 7: enter and edit the text you want in the black dialog box

Step 8: click "export to U disk" to export USB flash disk, and click OK

Step 9: export successfully. Whether to pull out the USB flash disk, click OK



Step 10: pull out the USB flash disk. After power on, insert the USB flash disk into the display screen. After about 5-6 seconds, pull out the USB flash disk



Mobile WIFI user manual (Screen control universal version)

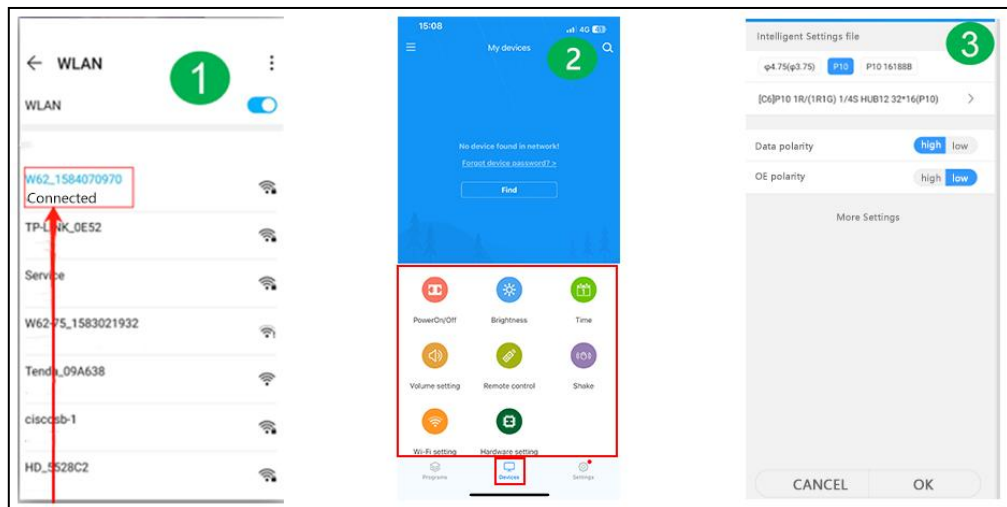
Step 1: scan QR code to download



Step 2: First find the WIFI hotspot of the control card and click Connect, password :88888888

Step 3: On the device interface, the control card automatically goes online

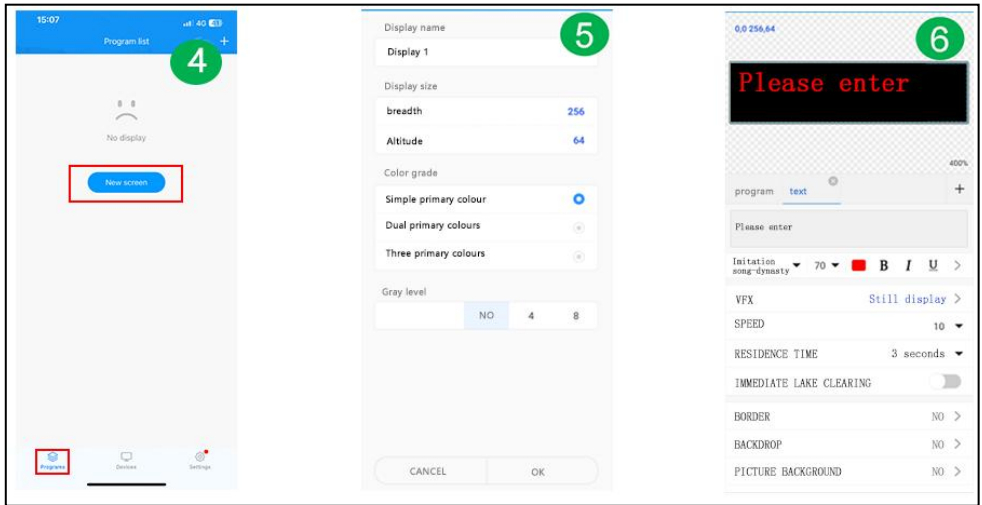
Step 4: Click on Hardware Settings, password: 888



Step 5: Program Interface - New display

Step 6: Screen parameter setting

Step 7: Edit the program - click Send



FAULTS AND REMEDIES

1. If the product is warped, please reset it according to the instructions.
2. If a board is not bright or insufficient when the product is working, the cable inside the product is loose. You can open the backboard, pull the cable, and plug it in again.
3. If several lamp beads do not light up when the product works, you must contact customer service to replace the module.
4. If you have any problems, please get in touch with our customer service quickly and let us solve them for you faster.

Manufacturer: Shanghaimuxinmuyeyouxiangongsi

Address: Baoshanqu Shuangchenglu 803long 11hao 1602A-1609shi
Shanghai

Imported to AUS: SIHAO PTY LTD, 1 ROKEVA STREETEASTWOOD
NSW 2122 Australia

Imported to USA: Sanven Technology Ltd.

Suite 250,9166 Anaheim Place, Rancho Cucamonga, CA 91730



SHUNSHUN GmbH
Römeräcker 9 Z2021,76351
Linkenheim-Hochstetten,Germany
euvertreter@gmail.com
+49 1727041930



Pooledas Group Ltd
Unit 5 Albert Edward House, The
Pavilions Preston, United Kingdom
pooledas123@gmail.com
Tel: 01772418127

Made In China

VEVOR[®]
TOUGH TOOLS, HALF PRICE

Technical Support and E-Warranty Certificate
www.vevor.com/support