

# **VEVOR<sup>®</sup>**

**TOUGH TOOLS, HALF PRICE**

Technical Support and E-Warranty Certificate

[www.vevor.com/support](http://www.vevor.com/support)

## **POWER INVERTER**

**MODEL: TM5000W**

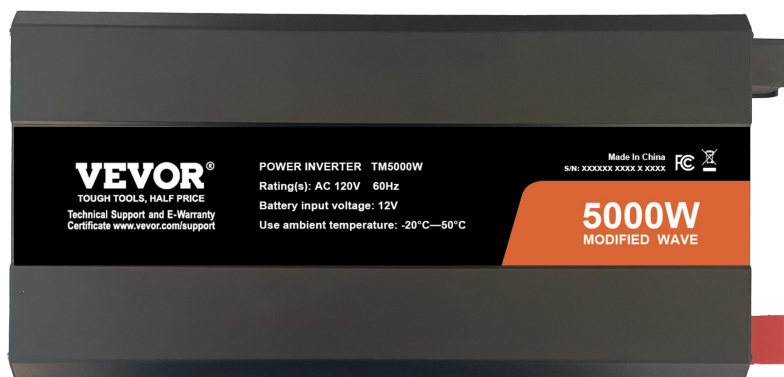
We continue to be committed to provide you tools with competitive price. "Save Half", "Half Price" or any other similar expressions used by us only represents an estimate of savings you might benefit from buying certain tools with us compared to the major top brands and does not necessarily mean to cover all categories of tools offered by us. You are kindly reminded to verify carefully when you are placing an order with us if you are actually saving half in comparison with the top major brands.

# VEVOR®

TOUGH TOOLS, HALF PRICE

## POWER INVERTER

**MODEL:TM5000W**



(The picture is for reference only, please refer to the actual object)

### NEED HELP? CONTACT US!

Have product questions? Need technical support? Please feel free to contact us:

**Technical Support and E-Warranty Certificate**  
**[www.vevor.com/support](http://www.vevor.com/support)**

This is the original instruction, please read all manual instructions carefully before operating. VEVOR reserves a clear interpretation of our user manual. The appearance of the product shall be subject to the product you received. Please forgive us that we won't inform you again if there are any technology or software updates on our product.



Warning-To reduce the risk of injury, user must read instructions manual carefully.



This product is subject to the provision of European Directive 2012/19/EC. The symbol showing a wheelie bin crossed through indicates that the product requires separate refuse collection in the European Union. This applies to the product and all accessories marked with this symbol. Products marked as such may not be discarded with normal domestic waste, but must be taken to a collection point for recycling electrical and electronic devices

## INSTRUCTIONS

- Please read this manual carefully before using products.
  - Thank you for choosing the power inverter we provide. We hope that our products can bring you the most satisfactory service.
1. The load (appliances) power aka the output of inverter shall not be greater than the rated power, which could lead the inverter out of work.
  2. The load power of the appliances, also known as the output of the inverter, should not exceed the rated power, as this could cause the inverter to malfunction.
  3. When connected with an inductive or capacitive load, the inverter power should be 4-6 times greater than the load power (aka 4-6 times the starting power).
  4. Red to positive pole, Black to negative pole, please connect it properly. Reversely connection would melt the fuse, it could work normally after replacing the fuse and connecting properly.
  5. Forbidden plugging the inverter in mains power.

## ●Product Description.

This high frequency inverter has adopted SPWM technology, and it's highly efficient and reliable. Product has passed ISO9001:2000. However, improper operation or misuse may still cause injury or loss, instruction and information provided in this manual must be followed all the time.

## ●Technical Parameters.

Output voltage	AC120V	AC230V
Input voltage	DC12V	
Loss when no load	< 1.8A	
Output wave	Modified wave	
Rated power	5000W	
Surge Power	≤10KW-12K W	
Output frequency	60Hz ±0.5Hz	50Hz ±0.5Hz
Efficiency	≥85%	
Over voltage shutting	≥16V DC	
Low voltage shutting	≤9.5V DC	
Over temperature shutting	Greater than 80 °C	
Ambient temperature	-10 °C --- +45 °C	

**Note:** Keep the power supply around the ventilation dry, within 1 meters must not have flammable items, strictly prevent the cause of fire.

## ●Protective Functions.

- 1.Overload protection: when overloading 125%, the inverter will send alarm, and stop working after 20 seconds. Loads are reduced to accepted level, the inverter will resume working.
- 2.Short circuit protection:When there is a short circuit in the output of the inverter, the inverter will automatically turn off the output until the short circuit problem is resolved, and the output can be restored.

3. Over-temperature protection: when the inside temperature of the inverter reaches 80°C, the RED indication light will be on. The inverter will stop working, once the temperature drops to accepted level, the inverter will automatically resume working.
4. Low voltage protection: when the battery voltage is below the setting level, the inverter will send alarm by beeping. When the battery voltage keeps dropping to its shutting level, the inverter will beep, and the RED LED will lit, the inverter will stop working, when the battery voltage is increased to its restart level, inverter will automatically resume working.
5. Over voltage protection: when the input voltage is higher than the setting level, the inverter will stop working, when the input voltage is normal, it will automatically resume working.
6. Reverse connection protection: once there is reverse connection, the inverter fuse will be burnt. In this case, please switch off the inverter, disconnect the power source, change the fuse.

**Note:** REVERSE CONNECT IS STRICTLY PROHIBITED.

● Installation.

1. The function of inverter is to convert the DC 12V voltage into AC120V/230V, before connection, please make sure the inverter is switched off.
2. When connecting the inverter to the battery, make sure that the battery voltage is consistent with the inverter reference voltage! !
3. Connect the Red cable of the inverter to the Positive pole of battery, Connect the Black cable of the inverter to the Negative pole of battery. Do not connect the cable reversely, otherwise the inverter fuse will be burnt.
4. Turn on the inverter power switch, at which point the green (blue) indicator light is on, indicating that the inverter is working properly.
5. Please connect the loads to the AC output of the inverter, please do not overload. In the case of overloading, the inverter will send alarm and stop working. To restart the inverter, please first switch off the inverter for 5 seconds, reduce the load, and switch on again.

## ●Precautions

The inverters are designed, manufactured and tested as per safety standards. However, as an electrical and electric product, it must be installed, operated and maintained strictly according to the related safety instructions as follows:

- 1.Reverse connection between the inverter and battery is strictly prohibited,it will burn the fuse of the inverter.
- 2.Please double check if the voltage of the battery matches the inverter input DC voltage, mismatch connection between the inverter and battery can cause serious damage.
- 3.Double check if the connections are correct, make sure the connections are tight and firm.
- 4.Do not extend the inverter power cable.
- 5.When the inverter is not in use, please switch it off and disconnect inverter from the system.
- 6.Avoid contact with any foreign objects or fluids. Do not touch the inverter with a wet hand. Keep the product away from children. Avoid using it in damp, dusty, high temperature areas.Do not use this product in a flammable and combustible area.
- 7.Install the product in well ventilated place, avoid using this product on or nearby hot objects such as electrical heaters, etc. Do not cover the inverter, avoid direct sunshine, moisture, and water.
- 8.This inverter can not be parallel connected.
- 9.It's strictly prohibited to connect this product to the city grid.
- 10.Do not try to repair the inverter, Once the inverter is opened,warranty void.

## ●Troubleshooting.

When there is no output, please check the following:

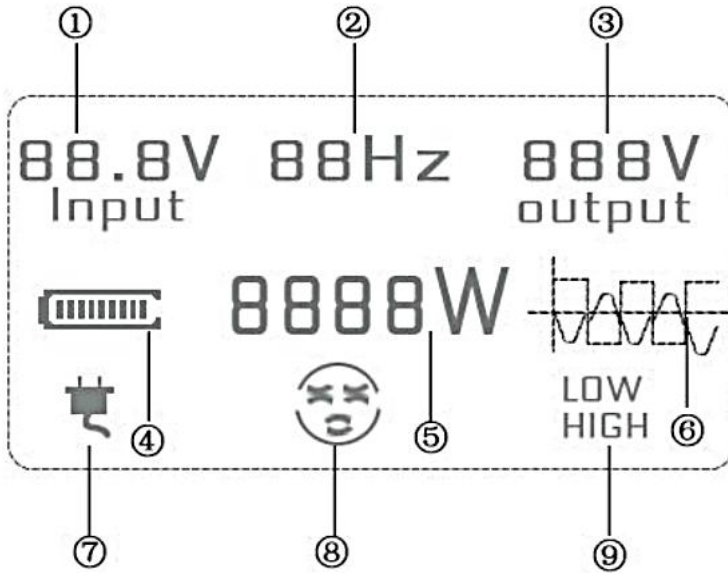
- 1.Excessive use of electrical appliances, too heavy load. Solution: Reduce electrical appliances, the use of electrical total power should be less than the inverter rated power.
- 2.Overheat protection. WORKAROUND: Reduce load cooling and restart after 15 minutes. (Summer temperature is high or the heat dissipation conditions are poor, should be appropriately reduced the use of the total power of electrical appliances.)
- 3.After the fuse blows, the fuse of the same capacity must be replaced.
- 4.Make sure that the cable connecting the battery is firmly and securely connected.
- 5.Low voltage of battery; please charge the battery.
- 6.Battery exhausted: Please change battery, battery can be exhausted over the years.

## ●Random Accessories.

Products are carefully tested and inspected prior to shipment, but it is still possible to receive damage in transit, please carefully check the equipment before installation. If there is any damage, contact the distributor in time.

- 1.Battery connection cable \* 2
- 2.A copy of the product instruction manual \* 1
- 3.A copy of the car spare fuse \* 16
- 4.External screen set (including cable one) \* 1

●Panel diagram.

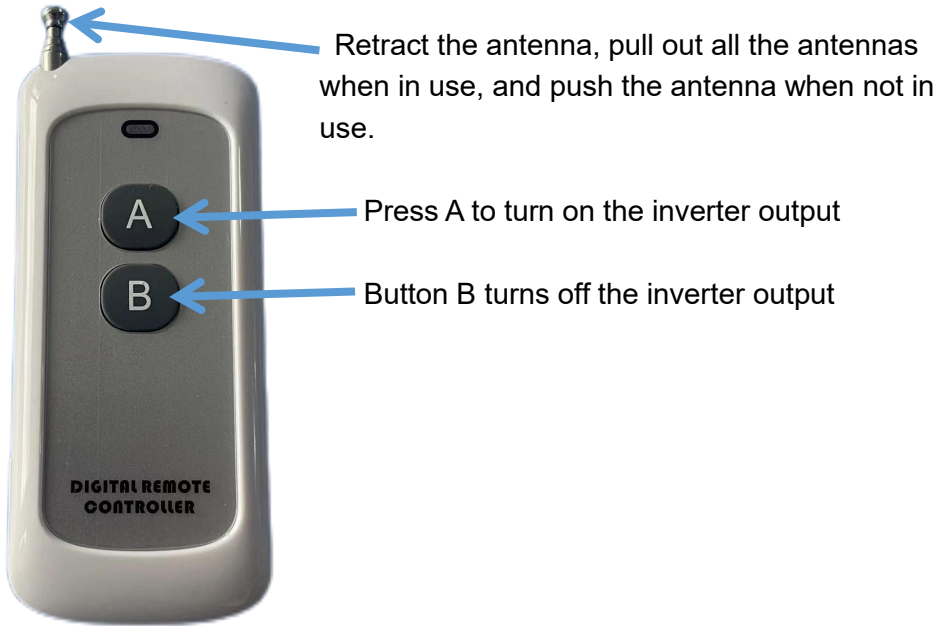


- ① Enter the battery voltage.
- ② The frequency of the output voltage.
- ③ Product Output Voltage.
- ④ Battery power.
- ⑤ Product power.
- ⑥ Product Waveform.
- ⑦ Turn on the load prompt.
- ⑧ Working status.
- ⑨ High voltage/low voltage protection.



● **Instructions for use of the wireless remote control.**

The inverter can be switched on and off remotely via a wireless remote control.



**Note:**

The recommended distance for remote control is 100 meters or less, please stretch out all the antennas of the remote control during use!

When the remote control does not work, replace the battery inside the remote control.

The internal battery model is: 23A 12V

**Manufacturer:** Shanghai muxinmuyeyouxiangongsi

**Address:** Shuangchenglu 803nong11hao1602A-1609shi, baoshanqu, shanghai 200000 CN.

**Imported to AUS:** SIHAO PTY LTD, 1 ROKEVA STREET EASTWOOD NSW 2122 Australia

**Imported to USA:** Sanven Technology Ltd., Suite 250, 9166 Anaheim Place, Rancho Cucamonga, CA 91730

<b>EC</b>	<b>REP</b>
-----------	------------

E-CrossStu GmbH  
Mainzer Landstr.69, 60329 Frankfurt am Main.

<b>UK</b>	<b>REP</b>
-----------	------------

YH CONSULTING LIMITED.  
C/O YH Consulting Limited Office 147, Centurion House,  
London Road, Staines-upon-Thames, Surrey, TW18 4AX



**VEVOR<sup>®</sup>**

**TOUGH TOOLS, HALF PRICE**

**Technical Support and E-Warranty Certificate**

**[www.vevor.com/support](http://www.vevor.com/support)**