

VEVOR[®]

TOUGH TOOLS, HALF PRICE

Technical Support and E-Warranty Certificate www.vevor.com/support

MAGNETIC DRY ERASE GLASS BOARD INSTRUCTION MANUAL

GB-2436-MW

GB-2436-MB

GB-3248-MW

GB-3672-MW

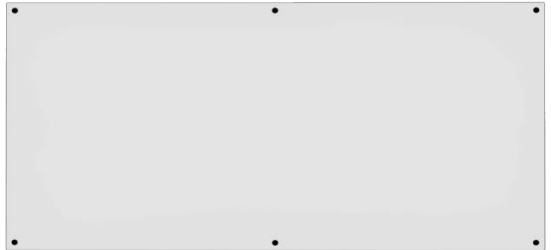
We continue to be committed to provide you tools with competitive price. "Save Half", "Half Price" or any other similar expressions used by us only represents an estimate of savings you might benefit from buying certain tools with us compared to the major top brands and does not necessarily mean to cover all categories of tools offered by us. You are kindly reminded to verify carefully when you are placing an order with us if you are actually saving half in comparison with the top major brands.

VEVOR[®]

Magnetic Dry Erase Glass Board



GB-2436-MW
GB-2436-MB
GB-3248-MW



GB-3672-MW

NEED HELP? CONTACT US!

Have product questions? Need technical support? Please feel free to contact us:

Technical Support and E-Warranty Certificate
www.vevor.com/support

This is the original instruction, please read all manual instructions carefully before operating. VEVOR reserves a clear interpretation of our user manual. The appearance of the product shall be subject to the product you received. Please forgive us that we won't inform you again if there are any technology or software updates on our product.

ASSEMBLY PRECAUTIONS



WARNING:

Read this manual before using this product. Failure to do so can result in serious injury. SAVE THIS MANUAL

1. Assemble needs to follow these instructions. Incorrect assembly can be a hazard.
2. Wear safety goggles and heavy-duty work gloves during assembly.
3. Do not assemble when tired or when under the influence of alcohol, drugs or medication.
4. Weight capacity and other product capabilities apply to a properly and completely assembled product only.
5. Keep the assembly area clean and well-lit.
6. Keep bystanders out of the area during assembly.
7. Assemble on a flat, level, hard and smooth surface capable of safely supporting a fully loaded cooler cart.











USE PRECAUTIONS



WARNING: TO PREVENT SERIOUS INJURY AND DEATH FROM TIPPING:

1. Write down some words, wait to dry, and then wipe. When wiping, must use supporting tools, strength to wipe the surface of the board shall prevail.
2. The written words on the day should be wiped clean.
3. Clean the tool with water when it is dirty, and then continue to use it after it is dry.
4. Do not use hard objects to knock, hit, scratch the writing board, to ensure normal writing.
5. Use as intended only. Do not sit or stand on the product.
6. Inspect before every use. Do not use it if parts are loose or damaged.
7. Use on flat, level, and hard surfaces only.

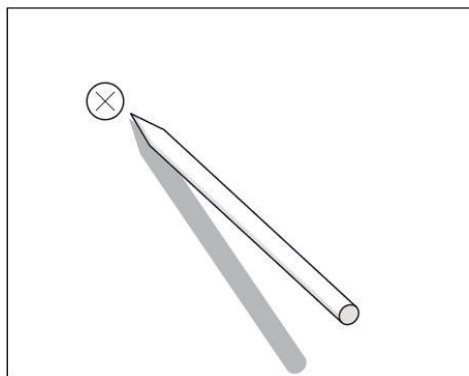
PARTS LIST

	GB-2436-MW GB-3248-MW	GB-2436-MB	GB-3672-MW
	1PC	1PC	1PC
	4PCS	4PCS	6PCS
	2PCS	2PCS	2PCS
	2PCS	/	2PCS
	/	2PCS	/
	1PC	1PC	1PC
	1PC	1PC	1PC
	2PCS	2PCS	2PCS
	4PCS	4PCS	6PCS
	4PCS	4PCS	6PCS

ASSEMBLY STEPS

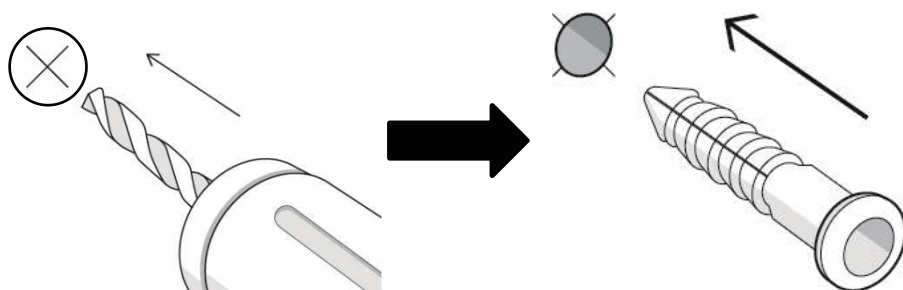
Thanks for purchasing one of our products, please read the assembly steps carefully before installation

STEP 1



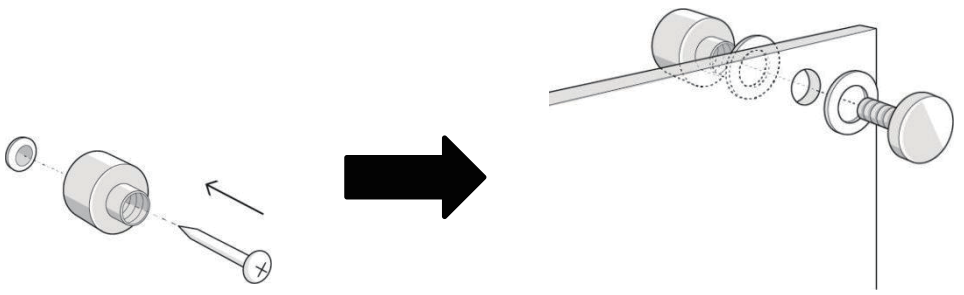
The positioning paper is laid flat on the surface of the glass plate to mark the location of the mounting holes and then pasted on the wall.

STEP 2



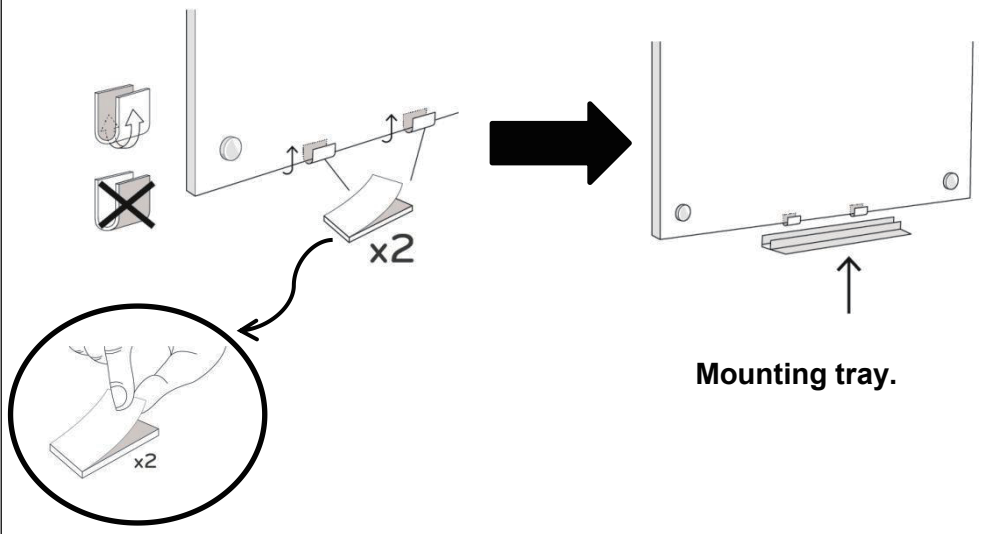
Drill holes on the wall and install expansion screws.

STEP 3



Mounting Glass Board.

STEP 4



Mounting tray.

PRODUCT PARAMETERS

Model	Colour	Product Size
GB-2436-MW	White	600*900mm
GB-2436-MB	Black	600*900mm
GB-3248-MW	White	800*1200mm
GB-3672-MW	White	915*1829mm

Manufacturer: Shanghai muxinmuyeyouxiangongsi

**Address: Shuangchenglu 803nong11hao1602A-1609shi,
baoshanqu, shanghai 200000 CN.**

**Imported to AUS: SIHAO PTY LTD. 1 ROKEVA STREET EAST-
WOOD NSW 2122 Australia**

**Imported to USA: Sanven Technology Ltd. Suite 250, 9166
Anaheim Place, Rancho Cucamonga, CA 91730**



**E-CrossStu GmbH
Mainzer Landstr.69, 60329 Frankfurt am Main.**



**YH CONSULTING LIMITED.
C/O YH Consulting Limited Office 147, Centurion House,
London Road, Staines-upon-Thames, Surrey, TW18 4AX**

VEVOR[®]

TOUGH TOOLS, HALF PRICE

Technical Support and E-Warranty Certificate
www.vevor.com/support