

VEVOR[®]

TOUGH TOOLS, HALF PRICE

Technical Support and E-Warranty Certificate

www.vevor.com/support

POWDER FILLING MACHINE USER MANUAL

We continue to be committed to provide you tools with competitive price.

"Save Half", "Half Price" or any other similar expressions used by us only represents an estimate of savings you might benefit from buying certain tools with us compared to the major top brands and does not necessarily mean to cover all categories of tools offered by us. You are kindly reminded to verify carefully when you are placing an order with us if you are actually saving half in comparison with the top major brands.

VEVOR[®]

TOUGH TOOLS, HALF PRICE

Powder Filling Machine

MODEL: SBF-100-V1, SBF-100-V2



NEED HELP? CONTACT US!

Have product questions? Need technical support? Please feel free to contact us:

Technical Support and E-Warranty Certificate
www.vevor.com/support

This is the original instruction, please read all manual instructions carefully before operating. VEVOR reserves a clear interpretation of our user manual. The appearance of the product shall be subject to the product you received. Please forgive us that we won't inform you again if there are any technology or software updates on our product.

⚠️ WARNING

1. Read carefully and understand all **ASSEMBLY AND OPERATION INSTRUCTIONS** before operating.
2. Failure to follow the safety rules and other basic safety precautions may result in serious personal injury.

GENERAL SAFETY RULES

Important reminder

1. Before use, please carefully read the product manual and ensure that you understand and comply with all safety warnings and usage precautions.
2. Do not use this product for other non-designated purposes to avoid unexpected risks.
3. This product is only applicable to users within the specified age group and scope of application. Please strictly comply with relevant age restrictions and warnings.
4. If there are any abnormalities in the product, please stop using it immediately and contact the after-sales service center for consultation or to arrange for repair.

Environmental requirements for use

1. Please use in a dry and well-ventilated environment to avoid extreme environmental conditions such as water activation, high temperature, high humidity, and extremely low temperature.
2. Avoid direct sunlight or contact with fire sources to prevent product damage or fire.
3. Please ensure a stable usage environment and prevent the product from being hit or dropped to avoid damage.

Safety Operation Guidelines

1. Please use a suitable power supply and voltage, and do not use damaged power cords or plugs.
2. When using this product, do not short-circuit circuits or connect mismatched devices to avoid risks such as electric shock and fire.

3. When foreign objects are found on the surface of the product, please immediately stop using and remove the foreign objects before continuing to use.
4. When using this product continuously for a long time, please rest in good time to avoid excessive fatigue.
5. Do not plug or unplug the power plug with wet hands to avoid the risk of electric shock.

Maintenance and upkeep

1. Regularly maintain and clean the product. Before cleaning, please disconnect the power supply and wipe it with a dry cloth. Be careful not to use alcohol, acid or alkali solutions, etc
2. When the product is not in use for a long time, please disconnect the power supply promptly to save energy and extend the product's lifespan.
3. Do not disassemble the product or replace components on your own. If you encounter any malfunctions, please contact the after-sales service center.

Emergency handling measures

1. When there are abnormal situations or accidents with the product, please stop using it as soon as possible.
If overheating, smoking, or abnormal sound are found, please immediately cut off the power supply and contact the after-sales service center.
2. If the product involves an emergency situation that may harm personal safety, please call the emergency rescue number in a timely manner.

SAVE THESE INSTRUCTIONS

MODEL AND PARAMETERS

Model	SBF-100-V1	SBF-100-V2
Suitable Particle	Granular and powdered materials. Not floury materials, smooth surface particles	
Particle Size	$\Phi < 5\text{mm}$	$\Phi < 5\text{mm}$
Filling Range	1-99.9g	1-99.9g
Voltage	AC120V 60Hz	AC230V 50Hz
Power(Max.)	550W	550W

STRUCTURE DIAGRAM



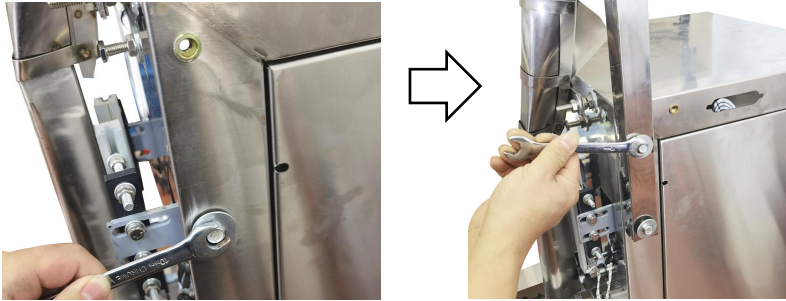
1. Reel 2.Fixed Mount 3. Outlet 4. Film Sealing Machine
 5. Handle 6.Power Switch 7. control panel
 8.Powder Filling Machine 9.Hopper

COMPONENTS

Parts \ Model	SBF-100-V1	SBF-100-V2
Powder Filling Machine	×1	×1
Film Sealing Machine	×1	×1
Open-end Wrench (10MM)	×1	×1
Open-end Wrench (14MM)	×1	×1
Power Cord	×2	×2
Signal Wire	×1	×1
User Manual	×2	×2
Fixed Mount	×1	×1
Stainless Steel Tube	×2	×2
Galvanized Tube	×1	×1
Baffle	×2	×2
Stop Collar	×3	×3
Flat Gasket	×1	×1
Spring	×1	×1

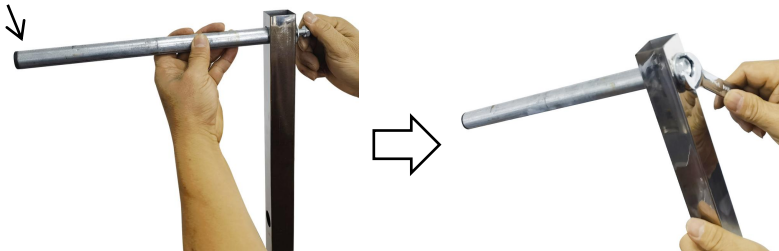
OPERATING INSTRUCTIONS

1.Remove the installed screws.Install the fixed mount and lock it with the screws you just removed as shown.

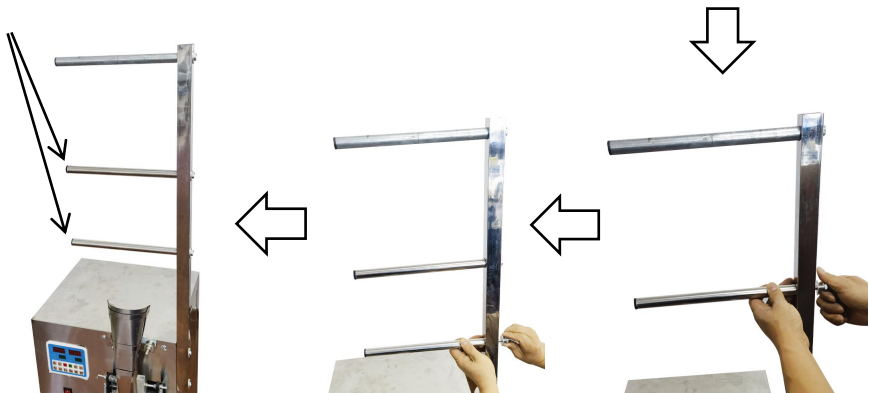


2.Install the galvanized tube and the stainless steel tubes on the square tubes successively as shown.

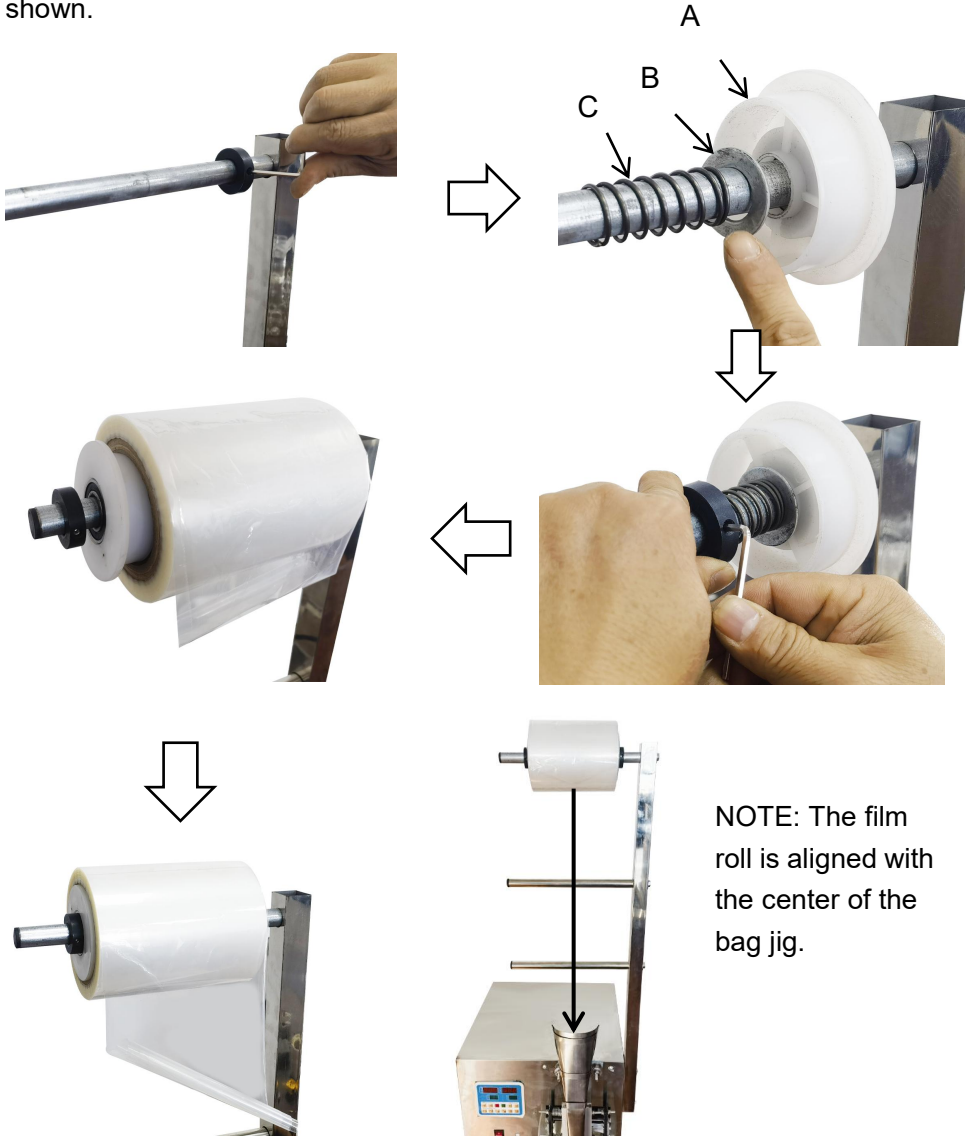
Galvanized Tube



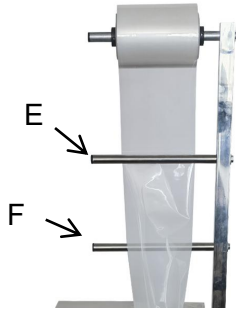
Stainless Steel Tube



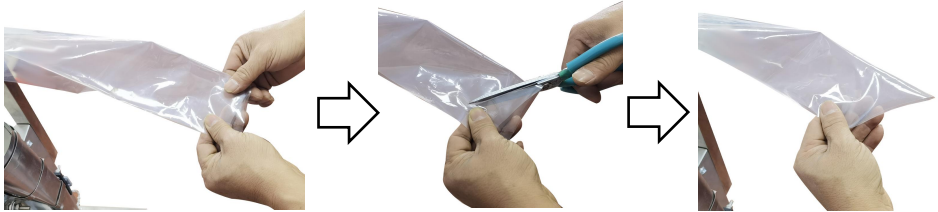
3. Install first stop collar. Then install the baffle(A), gasket(B) and spring(C) in turn. Install the second stop collar and properly press the spring. Then install the film roll and the second baffle, and lock it with the third stop collar as shown.



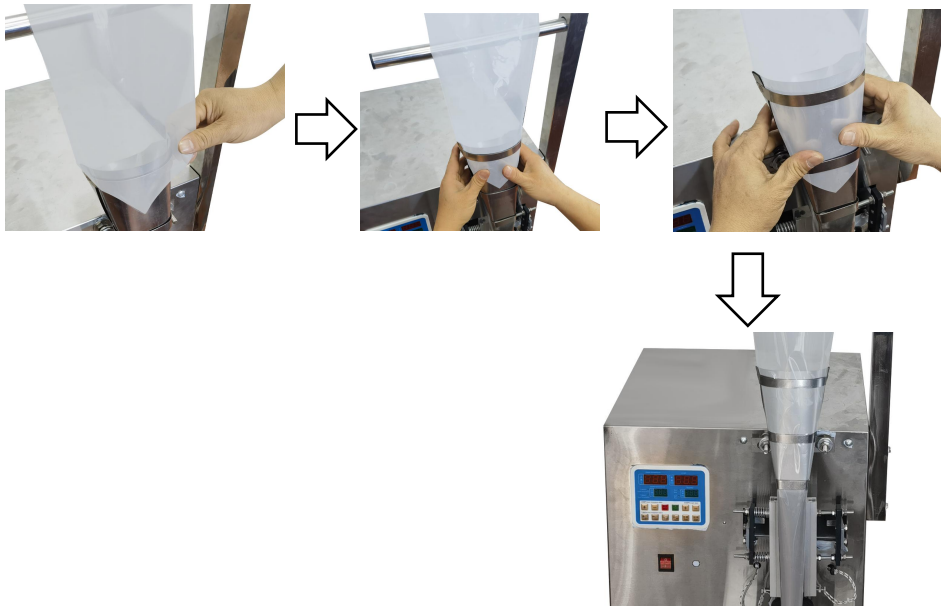
4. The film passes through rods E and F as shown.



5. Pull the film out and fold it in half along the length. Then cut a sharp Angle out of the front end of the film as shown.



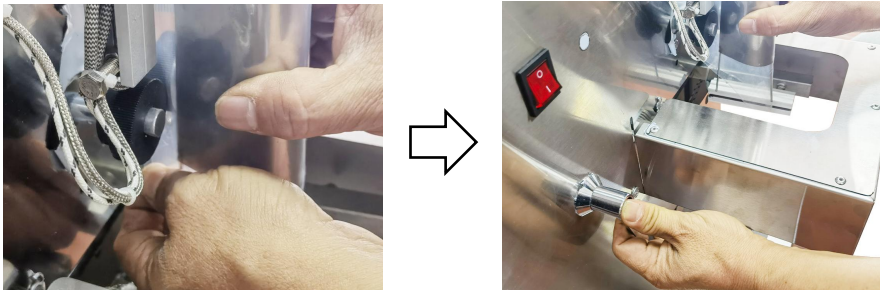
6. Unfold the folded film and thread it down into the bag forming a jig as shown.



7. Turn the handle 90° clockwise to separate a pair of black rollers as shown.

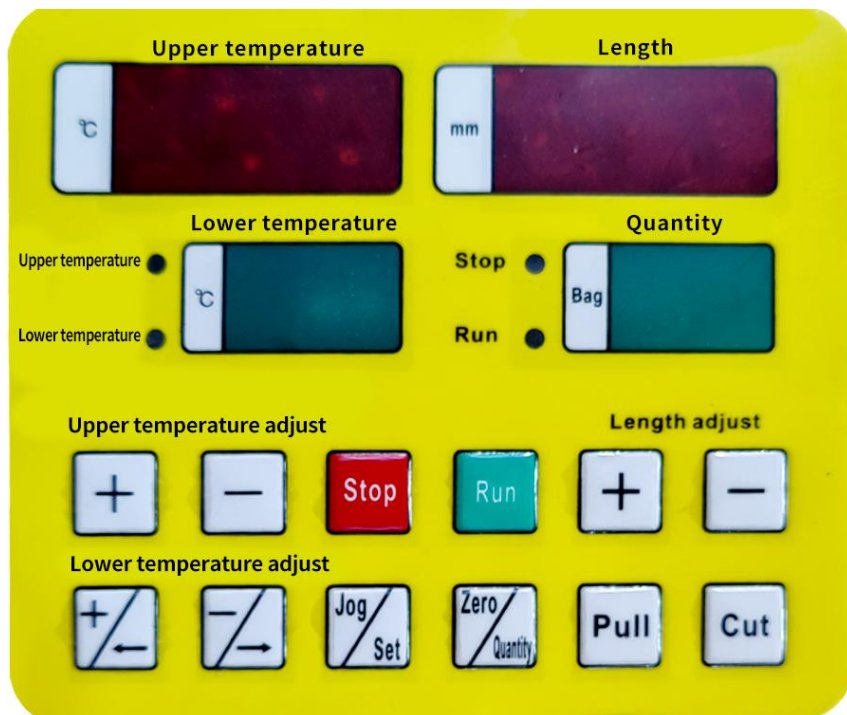


8. Pull the film through the middle of a pair of black rollers. Then turn the handle 90° counterclockwise and this pair of black rollers clamp the film as shown.



9.Align the two machine ports and connect them with signal wire as shown.
Product assembly completed.





1. Upper temperature: Display vertical sealing temperature.
2. Lower temperature: Display the notch sealing temperature.
3. Length: Displays set bag length.
4. Quantity: Display the number of sealed bags.
5. Upper temperature adjust "+": Increase the vertical sealing temperature.
6. Upper temperature adjust "-": Lower the vertical sealing temperature.
7. Stop: Stop the machine. (Red light when it stops)
8. Run: When the temperature reaches, the light turns green.
9. Length adjust "+": Increase the bag length
10. Length adjust "-": Shorten the bag length
11. Lower temperature adjust "+": Increase the notch sealing temperature.
12. Lower temperature adjust "-": Lower the notch sealing temperature.
13. Jog: Manual test key. Set: To set internal functions, hold down.
14. Zero/Quantity
15. Pull: Hand stretch bag.
16. Cut: Hand bag cutting.

The operating instructions

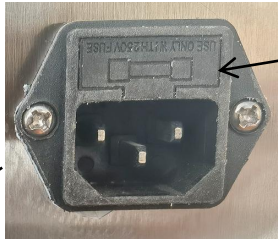
1. Put the two machines in a stable position with the feed ports in line.
2. Plug in the power cable and turn on the power switch.
3. Set the working temperature of sealing bag.(It is recommended to set the temperature between 100 and 140 degrees Celsius.It is related to the film material.)
4. When the temperature reaches the set value, the first test machine makes 3 to 5 empty bags.
5. Turn on both machines to automatically fill and seal bags.

Tips:The bag length can be set according to the need to fill the required materials.

MAINTENANCE

- 1.The user shall select a quantitative filling machine of a suitable range according to the said products.
 - 2.The machine contains a precision electronic scale, it is forbidden to be overweight.
 - 3.When in use, please keep the machine level and stable to avoid big vibrations or impact; otherwise, it may cause damage.
 - 4.After use, please clean the material and keep the machine clean
 - 5.When the machine is not in use, please empty the materials and store it in a ventilated and dry place.
 - 6.Please clean the product and the filter in time after each use.
 - 7.Always keep the product outside clean.
- Please store the product in a dry and ventilated place.

If the fuse is damaged, replace it as shown.



Fuse

TROUBLESHOOTING

Problem	Possible Cause	Possible Solution
The product doesn't work	The power cord is not plugged in properly	Reconnect the power cord
	Fuse failure	Replace the fuse
Bag-making stopped	The film roll is upside down.	Reinstall the film roll
	The signal wire is not plugged in	Reinsert the signal cable
	The handle didn't go back.	The handle rotates back into place.
	The film roll is not secured	Film roll re-fixed
Bag sealing is not good	Sealing temperature is too low.	Set the appropriate temperature as recommended
	Sealing temperature is too high.	

Manufacturer: Shanghaimuxinmuyeyouxiangongsi

Address: Shuangchenglu 803nong11hao1602A-1609shi, baoshanqu, shanghai 200000 CN.

Imported to AUS: SIHAO PTY LTD. 1 ROKEVA STREETEASTWOOD NSW 2122 Australia

Imported to USA: Sanven Technology Ltd. Suite 250, 9166 Anaheim Place, Rancho Cucamonga, CA 91730



E-CrossStu GmbH
Mainzer Landstr.69, 60329 Frankfurt am Main.



YH CONSULTING LIMITED.
C/O YH Consulting Limited Office 147, Centurion House,
London Road, Staines-upon-Thames, Surrey, TW18 4AX

VEVOR[®]

TOUGH TOOLS, HALF PRICE

Technical Support and E-Warranty Certificate

www.vevor.com/support