

VEVOR[®]

TOUGH TOOLS, HALF PRICE

Technical Support and E-Warranty Certificate www.vevor.com/support

INSTRUCTION FOR PET CARRIER WITH WHEELS

MODEL:JW-XB21212519(T802)

We continue to be committed to provide you tools with competitive price.

"Save Half", "Half Price" or any other similar expressions used by us only represents an estimate of savings you might benefit from buying certain tools with us compared to the major top brands and does not necessarily mean to cover all categories of tools offered by us. You are kindly reminded to verify carefully when you are placing an order with us if you are actually saving half in comparison with the top major brands.

VEVOR®

TOUGH TOOLS, HALF PRICE

PET CARRIER WITH
WHEELS

JW-XB21212519(T802)



NEED HELP? CONTACT US!

Have product questions? Need technical support? Please feel free to contact us:

Technical Support and E-Warranty Certificate www.vevor.com/support

This is the original instruction, please read all manual instructions carefully before operating. VEVOR reserves a clear interpretation of our user manual. The appearance of the product shall be subject to the product you received. Please forgive us that we won't inform you again if there are any technology or software updates on our product.

Washing Instructions

- Do not bleach.
- Spread out and hang to air to dry.
- Do not dry it in a dryer.
- Do not iron.
- Not machine washable.
- Hand washable.
- Cleaning surface dirty with wet towels.

WARNING

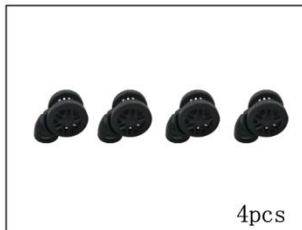
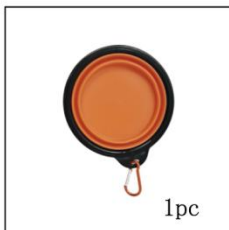
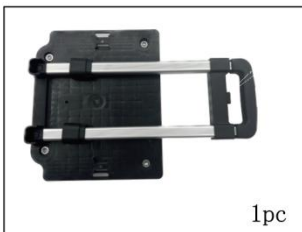
- Please read this manual carefully before using the product.
- Flammable: Keep away from open flame. This product will ignite and burn if brought into contact with an open flame.
- Keep away from sharp points, blades and other items, so as not to scratch the product.
- This product is not a toy, pet carrier with wheel cannot be used as toys for children to play with.
- Do not use the rolling carrier without safely fastening to the base.
- This product uses a self-locking zipper, please do not pull two zippers at the same time.

SAVE THESE INSTRUCTION

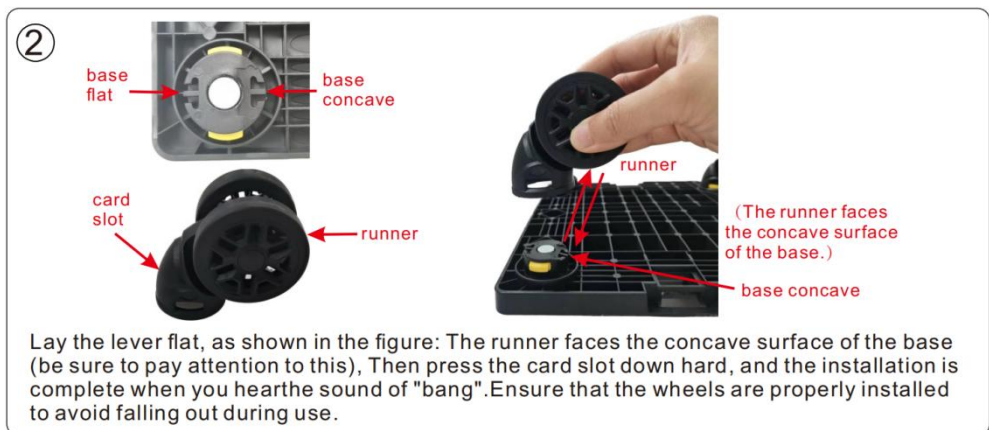
SPECIFICATIONS

Model	JW-XB21212519(T802)
Product Size	425×355×280mm
Color	Gray

COMPONENTS



Assembly Instructions



③



④



⑤



⑥



Manufacturer: Shanghaimuxinmuyeyouxiangongsi

Address: Shuangchenglu 803nong11hao1602A-1609shi, baoshanqu, shanghai 200000 CN.

EC REP: E-CrossStu GmbH.

Mainzer Landstr.69, 60329 Frankfurt am Main.

UK REP: YH CONSULTING LIMITED.

C/O YH Consulting Limited Office 147, Centurion House, London Road, Staines-upon-Thames, Surrey, TW18 4AX

Imported to USA: Sanven Technology Ltd.

Suite 250, 9166 Anaheim Place, Rancho Cucamonga, CA 91730

VEVOR[®]

TOUGH TOOLS, HALF PRICE

Technical Support and E-Warranty Certificate

www.vevor.com/support