

VEVOR[®]

TOUGH TOOLS, HALF PRICE

Technical Support and E-Warranty Certificate www.vevor.com/support

HVLP Spray System

We continue to be committed to provide you tools with competitive price. "Save Half", "Half Price" or any other similar expressions used by us only represents an estimate of savings you might benefit from buying certain tools with us compared to the major top brands and does not necessarily mean to cover all categories of tools offered by us. You are kindly reminded to verify carefully when you are placing an order with us if you are actually saving half in comparison with the top major brands.

VEVOR[®]

TOUGH TOOLS, HALF PRICE

HVLP Spray System

MODEL:JS-FB13F-T



NEED HELP? CONTACT US!

Have product questions? Need technical support? Please feel free to contact us:

Technical Support and E-Warranty Certificate
www.vevor.com/support

This is the original instruction, please read all manual instructions carefully before operating. VEVOR reserves a clear interpretation of our user manual. The appearance of the product shall be subject to the product you received. Please forgive us that we won't inform you again if there are any technology or software updates on our product.

IMPORTANT SAFETY INSTRUCTIONS



To reduce the risks of fire or explosion, electrical shock, and the injury to persons, read and understand all instructions included in this manual. Be familiar with the controls and the proper usage of the equipment.

WARNING – To reduce the risk of fire or explosion:

1. Do not spray flammable or combustible materials near an open flame or sources of ignition such as cigarettes, motors, and electrical equipment.
2. For units intended for use with only water-based or mineral spirit-type materials with a minimum flash point of 55°C- Do not spray or clean with liquids having a flash point less than 55°C.
3. Paint or solvent flowing through the equipment is able to result in static electricity.

Static electricity creates a risk of fire or explosion in the presence of paint or solvent fumes. All parts of the spray system, including the pump, spray gun, and objects in and around the spray area shall be properly grounded to protect against static discharge and sparks.

4. Do not use a paint or a solvent containing halogenated hydrocarbons. See operating instructions for examples of these types of materials.
5. Keep spray area well ventilated. Keep a good supply of fresh air moving through the area. Keep pump assembly in a well-ventilated area. Do not spray pump assembly.
6. Do not smoke in the spray area.
7. Do not operate light switches, engines, or similar spark producing products in the spray area.
8. Keep area clean and free of paint or solvent containers, rags, and other flammable materials.
9. Know the contents of the paints and solvents being sprayed. Read all Material Safety Data Sheets (MSDS) and container labels provided with the paints and solvents. Follow the paint and solvent manufacturer's safety instructions.
10. Fire extinguisher equipment shall be present and working.

WARNING – To reduce the risk of skin injection:

1. Do not aim the gun at, or spray any person or animal.
2. Keep hands and other body parts away from the discharge. For example, do not try to stop leaks with any part of the body.
3. Always use the nozzle tip guard. Do not spray without nozzle tip guard in place.
4. Only use a nozzle tip specified by the manufacturer.
5. Use caution when cleaning and changing nozzle tips. In the case where the nozzle tip clogs while spraying, follow the manufacturer's instructions for turning off the unit and relieving the pressure before removing the nozzle tip to clean.



WARNING – To reduce the risk of injury:

1. Always wear appropriate gloves, eye protection, and a respirator or mask when painting.
2. Do not operate or spray near children. Keep children away from equipment at all times.
3. Do not overreach or stand on an unstable support. Keep effective footing and balance at all times.
4. Stay alert and watch what you are doing.
5. Do not operate the unit when fatigued or under the influence of drugs or alcohol.
6. Household use only.
7. This product is of protection class II. That means it is equipped with enhanced or double insulation.



WHEN SERVICING USE ONLY IDENTICAL REPLACEMENT PARTS.

This appliance has a polarized plug. This plug will fit in a polarized outlet only one way. If the plug does not fit fully in the outlet, reverse the plug. If it still does not fit, contact a qualified electrician to install the proper outlet. Do not change the plug in any way.

SAVE THESE INSTRUCTIONS

SERVICING OF A DOUBLE-INSULATED PRODUCT

In a double-insulated product, two systems of insulation are provided instead of grounding. No grounding means is provided on a double-insulated product, nor should a means for grounding be added to the product. Servicing of a double-insulated product requires extreme care and knowledge of the system, and should be done only by qualified service personnel. Replacement parts for a double-insulated product must be identical to those parts in the product.

Intend use

Coating Materials Suitable for Use

Water- and solvent-based paints, finishes, primers, 2-component paints, clear finishes, automotive finishes, staining sealers and wood sealer-preservatives.

Coating Materials Not Suitable for Use

Paints contain high abrasive material.

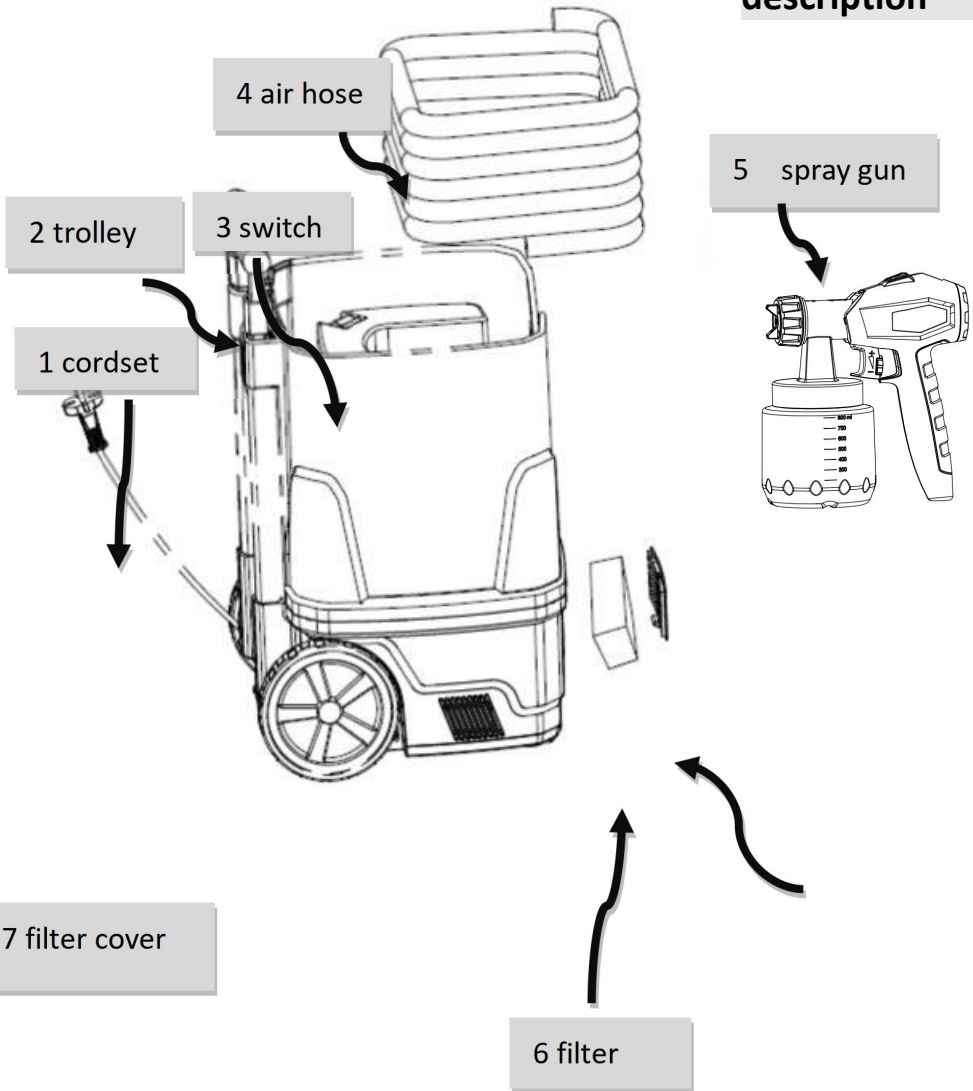
Technical data

Model	JS-FB13F-T
Rated voltage	120 V ~
Rated frequency	60Hz
Rated input	10.5A
Double insulation	回
Max. flow	1500mL
Pressure	20Kpa
FCC Statement	This device complies with Part 15 of the FCC Rules. Operation is subject to the following two conditions: (1)This device may not cause harmful interference, and (2)this device must accept any interference received, including interference that may cause

undesired operation.

Parts

description



Before spraying

1. Preparing the Coating Material

Before spraying, the material being used may need to be thinned with the proper solvent as specified by the material manufacturer.



Never exceed the thinning advice given by the coating manufacturer.



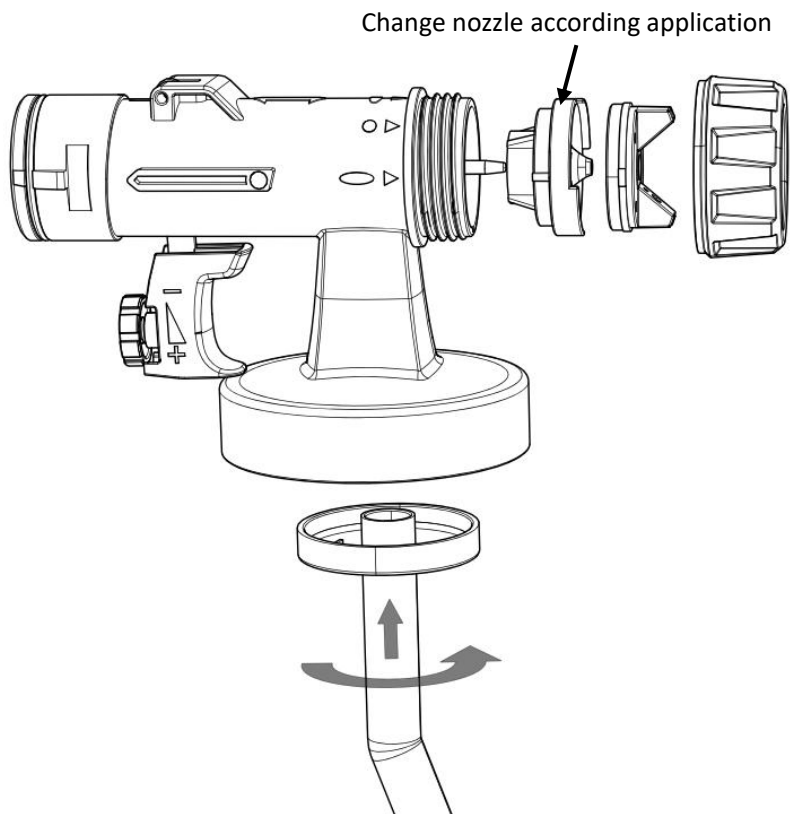
Stir the paint fully.

2. Select a correct nozzle

Five size nozzles (1.0mm, 1.5mm, 1.8mm, 2.6mm, 3.0mm) are provided with this unit and can be attached according the application.



The smaller nozzle is preferred when delivering low viscosity paint and can get a fine spray pattern.



3. Always make sure the suction tube is tightly fitted before tighten the canister. A loose fitting may cause spray problem.

4. Assemble the air hose.

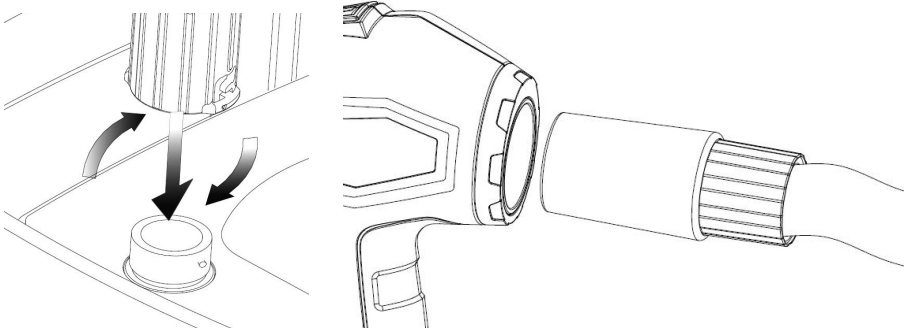
Insert the hose coupler to the outlet on base and spray gun, rotate the coupler make sure it seats firmly.

Mount hose coupler to
base outlet.



Mount hose coupler to
spray gun.

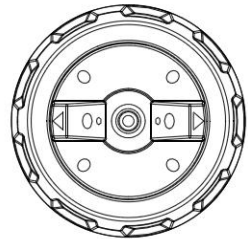
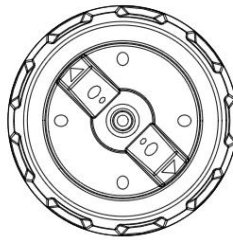
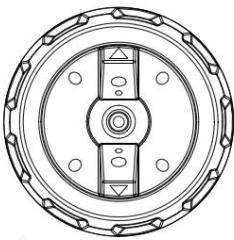




5. Adjust the spray pattern setting

Three different spray jet settings can be chosen on the spray gun, depending on the application and target object.

Settings



Spray patterns get

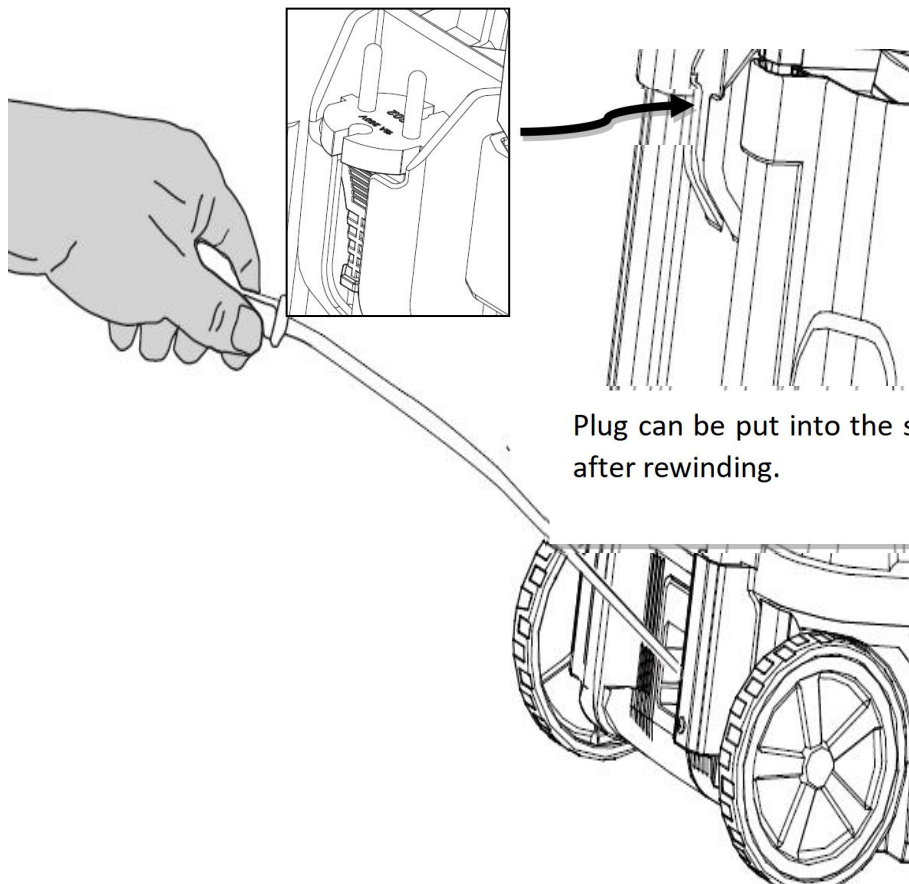


6. Set a suitable cord length

An automatic cord reel is installed in the appliance, choose a suitable

cable length according your work by pulling out the cable.

The cable can be rewind automatically by a gently pull and release.



Plug can be put into the slot after rewinding.

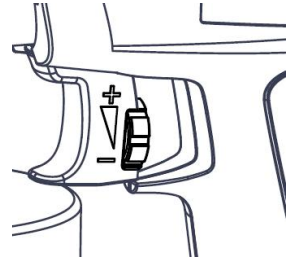


Pull hard to extend the length.
A gently pull can release and rewind cable automatically

Start your working

1. Push the ON / OFF switch (3) on the machine and start painting.
2. Adjusting the Material Volume

Set the material volume by turning the regulator knob.

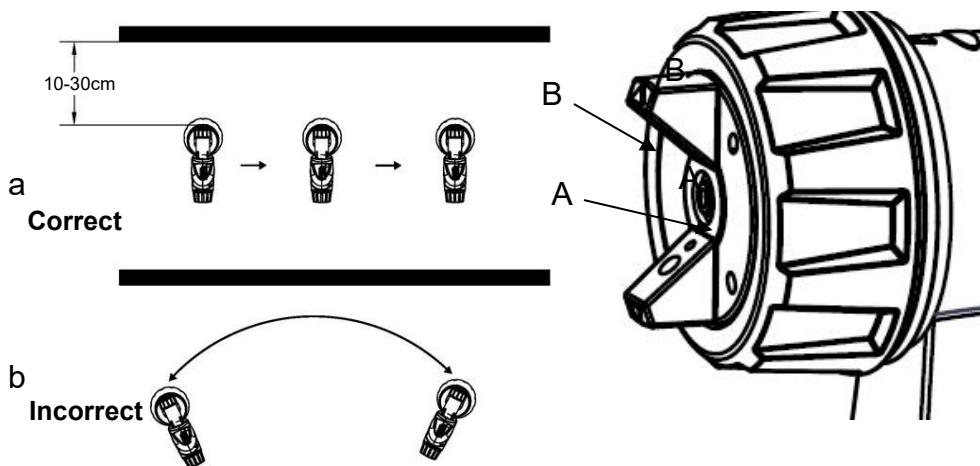


Remark: It is advisable to test the spray gun on a cardboard or a similar surface to find the correct setting.

Important: Begin spraying outside of the target area and avoid interruptions inside the target area.

Spray Technique

- The spray result depends heavily on the smoothness and cleanness of the surface to be sprayed. Therefore, the surface should be carefully prepared and kept free of dust.
- Cover all surfaces **not** to be sprayed.
- **Correct.** Be sure to hold the spray gun at an even distance of approx. 10-30 cm to the target object. An even movement of the spray gun results in an even surface quality. *Part "a" in below picture*
- **Incorrect.** Heavy spray fog build-up, uneven surface quality. *Part "b" in below picture*
- When coating material builds up on the nozzle (A) and air cap (B), clean both parts with a solvent or water.



Taking Out of Operation and Cleaning

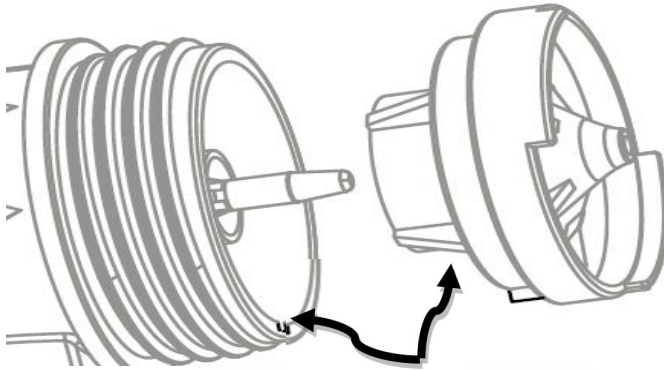
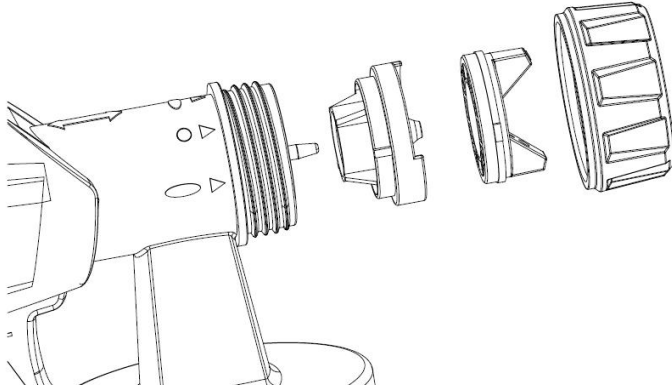
1. Turn the machine off. Activate the trigger guard so that the coating material in the spray gun flows back into the container.
2. Release the container by clockwise turning the container. Empty any remaining paint back into the material tin.
3. Pre-clean the container and feed tube with a brush.
4. Pour solvent or water into the container. Attach the container back on.



Use only solvents with a flashpoint over 55°C

5. Turn on the machine and spray the solvent or water into a container or a cloth.
6. Repeat the above procedure until the solvent or water emerging from the nozzle is clear.
7. Turn the machine off.
8. Then empty the container completely. Always keep the container seal free of coating material residue and check for damage.
9. Disassemble the nozzle parts and clean each part separately.

10.



Rib should fit into the groove



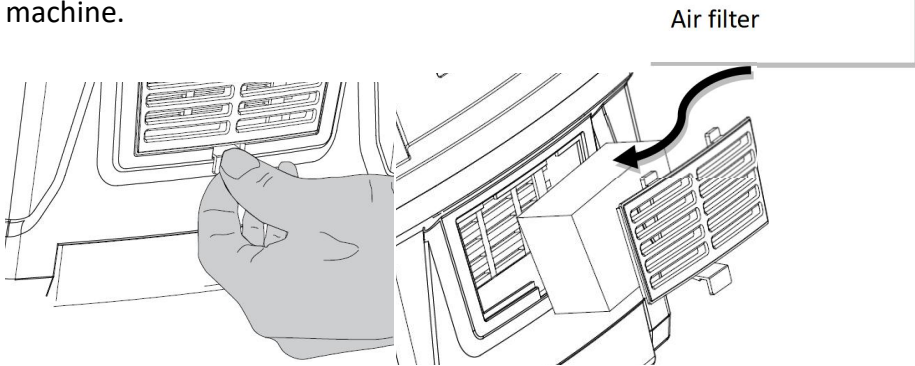
Caution! Never clean nozzle or air holes in the spray gun with sharp metal objects.

11. Clean the outside of the spray gun and container with a cloth soaked in solvent or water.
12. Reassemble the nozzle back onto the sprayer.
Note: rib on the nozzle should fit into the groove in the base.

Maintenance

Change the air filter

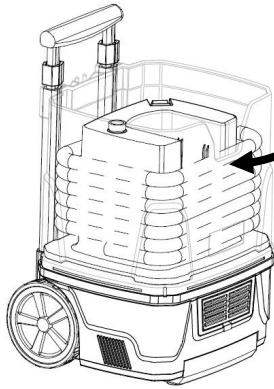
Change the air filter if it is soiled. Release the cover fastening from the machine, place the air filter in the cover. Push the cover back onto the machine.



WARNING! Never operate the machine without the air filter; dirt could be sucked in and interfere with the function of the machine.

Storage

After usage and cleaning, twist the hose to the base and put the sprayer into the base.



Twist the hose onto the holder.

Correction of Malfunctions

Problem	Cause	Remedy
No coating material emerges from the nozzle	Nozzle clogged Feed tube clogged Material volume setting turned too far to the downside (-) Feed tube loose No pressure build-up in container Viscosity of coating material too high	Clean Clean Turn to the upside (+) Insert Tighten container Thin the paint
Coating material drips from the nozzle	Nozzle loose Nozzle worn Coating material assembly at air cap, nozzle or needle	Tighten nozzle Change nozzle Clean
Atomization too coarse	Viscosity of coating material too high Material volume too large Nozzle contaminated Air filter heavily soiled Too little pressure build-up in container Too big nozzle	Thin Turn material volume adjusting screw to the downside (-) Clean Change Tighten container Change a smaller no

Twist the h

Address: Shuangchenglu 803nong11hao1602A-1609shi, baoshanqu, shanghai 200000 CN.

Imported to AUS: SIHAO PTY LTD, 1 ROKEVA STREETEASTWOOD NSW 2122 Australia

Imported to USA: Sanven Technology Ltd., Suite 250, 9166 Anaheim Place, Rancho Cucamonga, CA 91730

EC	REP
-----------	------------

E-CrossStu GmbH
Mainzer Landstr.69, 60329 Frankfurt am Main.

UK	REP
-----------	------------

YH CONSULTING LIMITED.
C/O YH Consulting Limited Office 147, Centurion House,
London Road, Staines-upon-Thames, Surrey, TW18 4AX

VEVOR[®]

TOUGH TOOLS, HALF PRICE

Technical Support and E-Warranty Certificate

www.vevor.com/support