

VEVOR[®]

TOUGH TOOLS, HALF PRICE

Technical Support and E-Warranty Certificate www.vevor.com/support

SLIDING GATE OPERATOR

MODEL: MD750

We continue to be committed to provide you tools with competitive price.

"Save Half", "Half Price" or any other similar expressions used by us only represents an estimate of savings you might benefit from buying certain tools with us compared to the major top brands and does not necessarily mean to cover all categories of tools offered by us. You are kindly reminded to verify carefully when you are placing an order with us if you are actually saving half in comparison with the top major brands.

VEVOR[®]

TOUGH TOOLS, HALF PRICE

SLIDING GATE OPERATOR

MODEL: MD750



NEED HELP? CONTACT US!

Have product questions? Need technical support? Please feel free to contact us:

Technical Support and E-Warranty Certificate
www.vevor.com/support

This is the original instruction, please read all manual instructions carefully before operating. VEVOR reserves a clear interpretation of our user manual. The appearance of the product shall be subject to the product you received. Please forgive us that we won't inform you again if there are any technology or software updates on our product.

Dear user,

Thank you for your purchase of our Remote-Control Door Machine. Please read and understand the instruction manual carefully before using the product. Always ensure the safety first, please follow all the safety instruction provided in the instruction manual attentively. Fully understand the working principle before attempting installation.

Safety Instructions

Safety Instruction

1. Must use 220V~240V of power supply. Do not use over or under supply voltage.
2. When installing or performing maintenance, always ensure the input power is cut-off.
3. Please ensure proper grounding is applied to the product with grounding resistance < 4m, it is recommended to use short circuit or current leakage protection.
4. Please ensure proper welding is applied when working with block iron. Make sure the iron does not come in contact with any open electrical circuit.
5. Always ensure proper safety and follow the instruction provided carefully when installing the product. Ensure the gate has firm base to prevent any tilting in case of power failure.
6. Before installing the door, clean any obstacles that may aid door malfunction. The product is designed for domestic use only. Installing near public places or near pedestrian walking area is not recommended.
7. Please ensure the remote control and the control box is away from the reach of children.
8. Please do not perform disassembly by yourself. Always take help of professionals when performing maintenance.

Technical Parameters

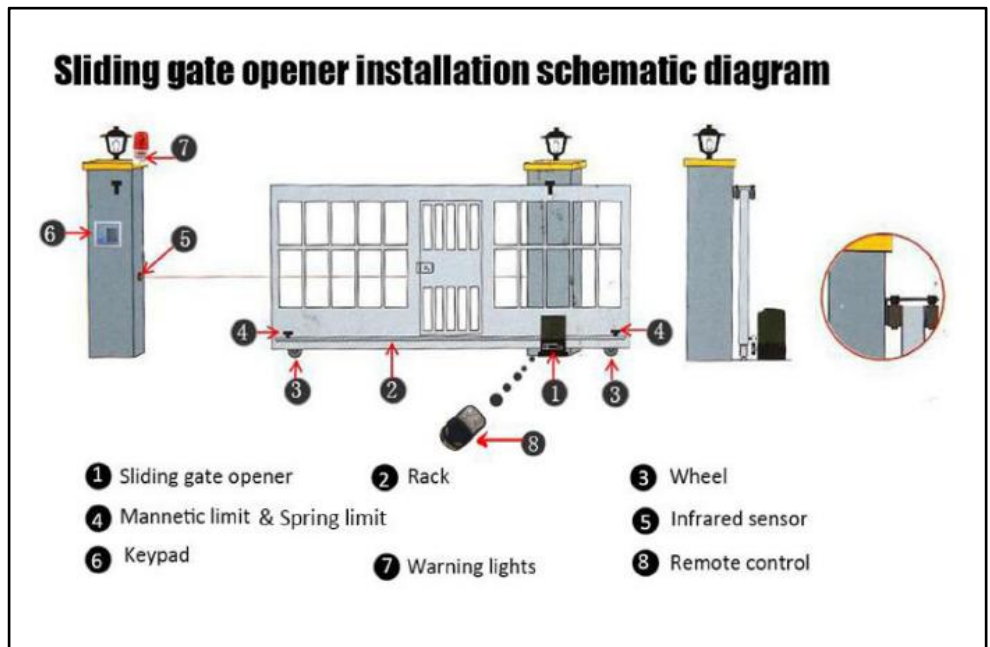
1. Supply power:220VAC~240VAC / 50Hz	2. Motorpower:370W/550W/750W/1200W
3. Input current: 3A	4. Motor speed: 1400RPM
5. Running speed: 12m/min	6. Suitable door weight: 100-2000KG
7. Temperature: -25°C ~ +70°C	8. Reserved line installation: 1 square millimeter (or 1.5 square meter with tow conductor)

Working Principle:

It consists of motor, worm gear, and driven gear. The motor drives worm gear and driven gear. The driven gear in turn drives the rack. The motor transfers its motion energy to the socket through worm and driven gear. Both the gears will rotate simultaneously when clutch is engaged, so that the door can open and close with simple electrical controls. In case if the power fails, disengage the clutch through disengage key (by turning it at about 90°).

Instruction

Please read the instruction carefully before use



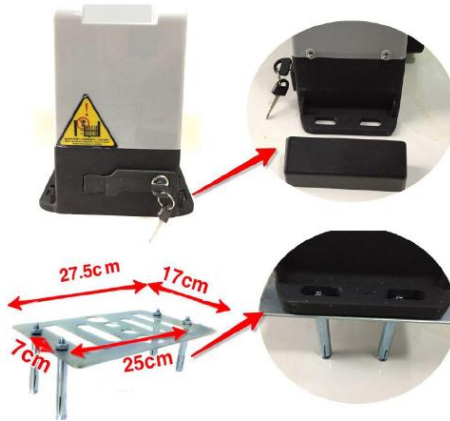
Sliding gate opener installation schematic diagram

1、Installing the metal base

The machine should be installed using the bolt on the metal base. Please follow

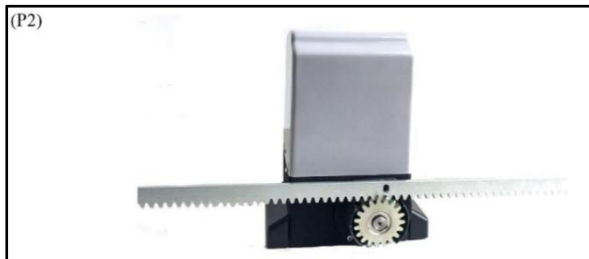
the metal base installation pictures below (P1).

(P1)



2、Installing the steel rack

Firstly, put it above the door motor teeth, deviate from the door machine, and then through the door steel rack and slowly push forward, bit by bit till it fixed on the steel rack. Following this method, you can make sure the rack and pinion teeth fit together perfectly. (P2) While installing please make sure you do not apply excess weight on the door and the gear.



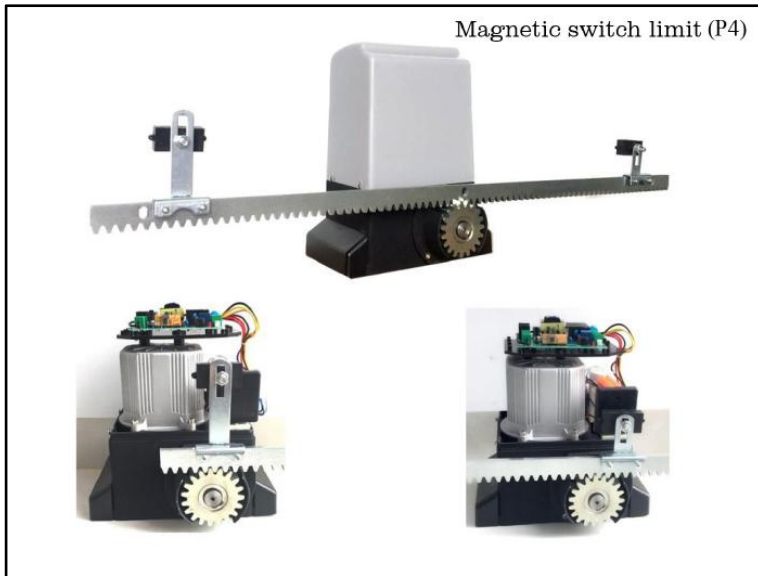
3、Motor release clutch (manual door open)

The door can be manually opened using the release lock mechanism. This feature ensures manual opening of the door in case of power failure. Please follow the picture below (P3).



4、Installing limit switch

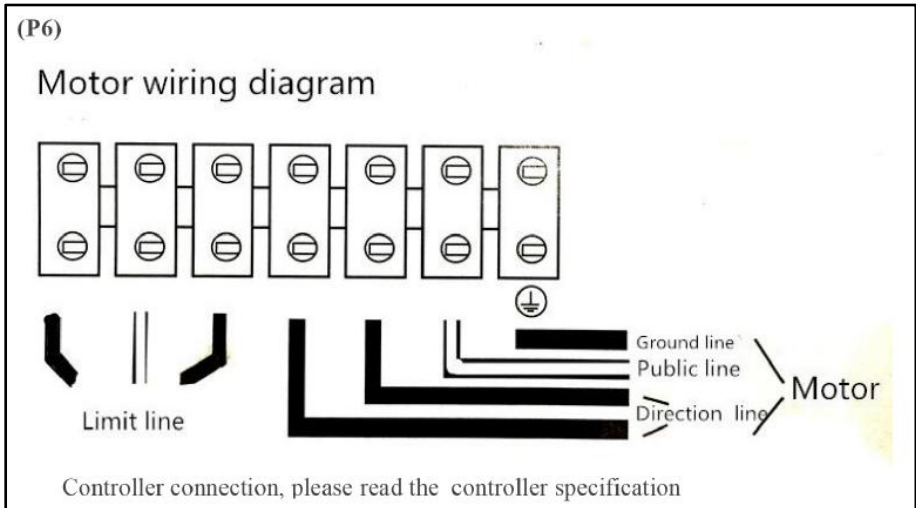
To finalize the position of the stroke, the switch bracket should be installed on rack (P4-P5). For spring switch limit should align with iron block. For magnetic switch limit make sure the magnet points towards the motor, position of shield shell magnetic limit switch should be located.



Spring switch limit (P5)



5、 Motor wiring diagram (P6)



Electrical connection

1. The connection shall be made in strict accordance with the label on the

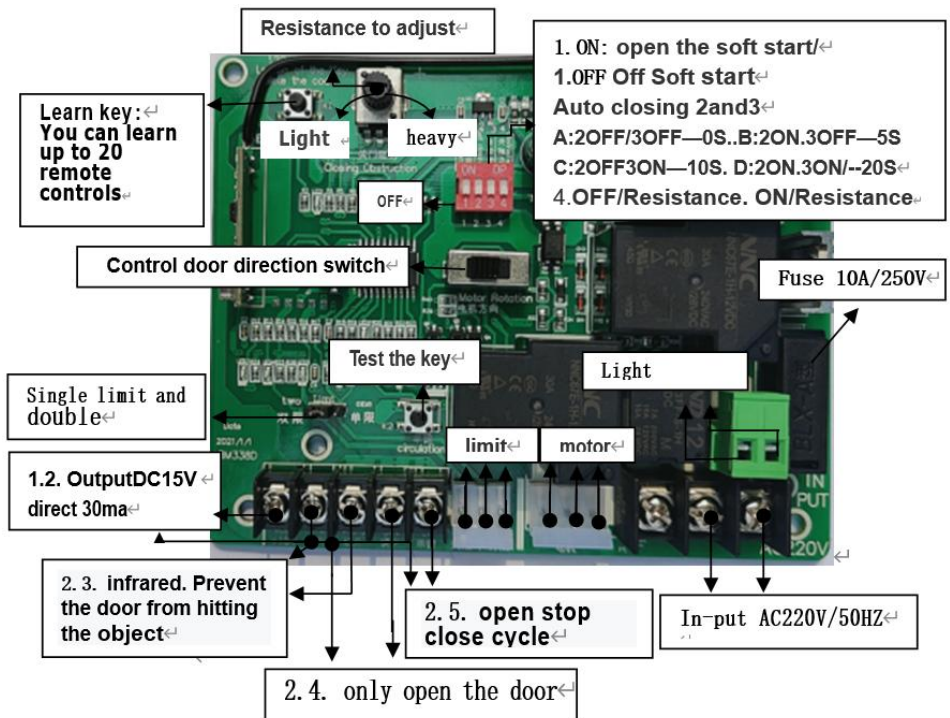
terminal, and "fire" and "zero" shall not be reversed.

2. Observe safety regulations and separate power lines and control lines.

3. Motor enclosure must be grounded.

4. According to the wiring diagram below, it is important to separate the power line from the control line, especially not to connect the "switch in place" control line to the motor line and power line, otherwise the controller will be damaged.

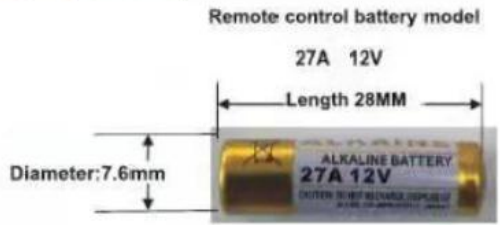
5. Schematic diagram of the composition of the control board and remote control





- Open Stop Close cycle
- Open Stop Close cycle
- Stop
- Not used

Parameters:
Frequency:433.92MHZ
Chip: HCS301 (rolling code)
Materials::ABS+aluminium alloy
Size:5.5*3.05*1.38cm



Pairing instructions:

1. Learning remote control: hold down the learning button until the learning indicator light LED is on, press any key of the remote control for 1 second, then the coding is finished, and the learning indicator is flashing.
2. Delete password: press and hold the learning button for 12 seconds to automatically remove all alignment codes and the original remote control is invalid.
- 3.The remote control adopts advanced vehicle rolling code technology, and the common remote-control code on the outside is not easy to be repeated, effectively preventing the door opening by mistake. The remote control has intelligent program design. Press the remote control for 4 seconds to automatically stop the launch, so as to prevent it from interfering with other remote control. And save remote battery power. Convenient for transportation and storage.
4. You can learn more than 40 remote controls.

Use a function:

- 1.The controller has the automatic memory function of power off. It is possible that

the debugging test has been carried out by the manufacturer, Limit detection, so the door must be pushed to the middle during installation。

2. Because the controller is turned on after the power is off. First of all, execute the turn on. This is normal phenomenon。

3. Single key loop: single key loop interface 1.3。

4. The potentiometer has automatic door closing. Turn counterclockwise to minimum close automatic door closing. The LED flicker once represents 1 second。

5. Equipped with infrared interface. And automatic resistance return.

6. Open the door automatically when the interface is switched on.

Power supply test

1. Before using the product, carefully check the power supply voltage, frequency and other data is in accordance with the requirement stated. Ensure proper grounding is applied and electrical wiring are accurate.

2. Turn the special random key counterclockwise, open the clutch and push the sliding door. Make the door movement idle if the door machine is working normally. Switch the special random key on-off clockwise, shut down the clutch.

3. Apply the input power supply, start to open the door. Observe the door movement.

4. Carefully adjust magnets or mechanical stop positions until the door opens and closes as per user requirement.

Maintenance

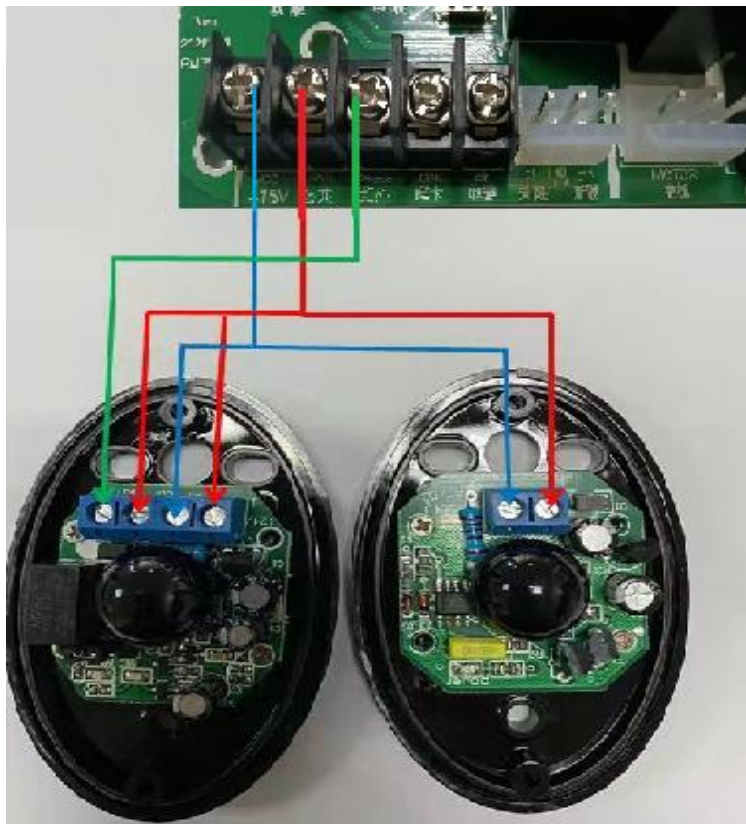
1. Coat the clutch keyhole with small amounts of antirust oil to prevent rust.

2. Regularly check the condition of electrical grounding.

3. Perform regular checks to ensure the parts are in good condition.

4. Motor requires advanced lubricating grease for smooth movement. Please do not apply regular lubricating oils.

5. The controller places the child out of reach. Always check whether the wire is broken, loose and wet. If you find it, please cut off the high-voltage power immediately and use it after repairing and replacing.



Error analysis and correction

	Obstacle	Cause analysis	Corrections
1	Motor does not work	No power supply, low or no capacitance, overload, thermal protection, inductive switch is damaged, broken or loose cable.	Check the power supply, replace the capacitor, inspect the door for any obstacles. Replace the induction switch, connect the cables properly

2	Door opens but does not close or vice versa	Damage to induction switch, A/COM/C line is wrong, check the controller or motor	Replace the induction door, adjust the door position, make sure wiring is done according to wiring diagram, check for any open circuit
3	Does not limit	Induction switch distance is too long, induction switch position is not correct, the magnet position is not correct, W.V.COM is wrong, induction switch is damaged	Adjust the position according to wiring diagram, check for any open circuit, replace the induction switch
4	Manual clutch failure	The clutch handle is damaged, rotation error, clutch is binding	Replace the clutch handle as per instructed, turn the output gear right or left
5	Press "open" to "close"	W.V line connection error	Ensure wiring is properly connected
6	Motor rotating but door is non-functional	Clutch pressure spring failure, elasticity is insufficient, clutch is disengaged, friction clutch pressure spring failure	Check, adjust or replace, replace or adjust the spring pressure

Troubleshooting method

fault phenomenon	Analysis of the fault	To deal with failure
	There is no 110V power input	Check power line

A. The power indicator is off	The fuse is broken. The connector is not in place	1.1. Check the output line for short circuit. 2. Replace the same specification after troubleshooting
B. Power indicator light is on, press open and close key, door body cannot be switched open and off	The clutch is not closed	Re-close the clutch
	Circuit board damage due to short circuit or severe overload of external devices.	Back for repair
C. Press the "open" button and "close" button, and the door body will stop automatically or stop when the limit is reached	1.Limit sensor cable short circuit or break. 2.sensor away from magnet.	1. Check the circuit and troubleshoot. Bring the sensor to the point magnet.
	Limit the damage	Replace sensor
D. Press the "open" button to turn green, but press the "close" button to stop and back	Short circuit of infrared probe line	Check the circuit and troubleshoot the probe line
	Infrared probe damaged	Replace the infrared probe
E. The remote control becomes shorter	1.Battery is low	1.Replace the remote-control battery 23A or 27A 12v.

Manufacturer: Shanghaimuxinmuyeyouxiangongsi

Address: Baoshanqu Shuangchenglu 803long 11hao 1602A-1609shi

Shanghai

Imported to AUS: SIHAO PTY LTD, 1 ROKEVA STREETEASTWOOD
NSW 2122 Australia

Imported to USA: Sanven Technology Ltd., Suite 250, 9166 Anaheim
Place, Rancho Cucamonga, CA 91730



SHUNSHUN GmbH
Römeräcker 9 Z2021,76351
Linkenheim-Hochstetten,Germany
euvertreter@gmail.com
+49 1727041930



Pooledas Group Ltd
Unit 5 Albert Edward House, The
Pavilions Preston, United Kingdom
pooledas123@gmail.com
Tel: 01772418127

Made In China

VEVOR[®]
TOUGH TOOLS, HALF PRICE

Technical Support and E-Warranty Certificate
www.vevor.com/support