

VEVOR[®]

TOUGH TOOLS, HALF PRICE

Technical Support and E-Warranty Certificate www.vevor.com/support

80 Gallon Air Compressor Single-phase model

We continue to be committed to provide you tools with competitive price. "Save Half", "Half Price" or any other similar expressions used by us only represents an estimate of savings you might benefit from buying certain tools with us compared to the major top brands and does not necessarily mean to cover all categories of tools offered by us. You are kindly reminded to verify carefully when you are placing an order with us if you are actually saving half in comparison with the top major brands.

VEVOR[®]

TOUGH TOOLS, HALF PRICE

80 Gallon Air Compressor



NEED HELP? CONTACT US!

Have product questions? Need technical support? Please feel free to contact us:

Technical Support and E-Warranty Certificate
www.vevor.com/support

This is the original instruction, please read all manual instructions carefully before operating. VEVOR reserves a clear interpretation of our user manual. The appearance of the product shall be subject to the product you received. Please forgive us that we won't inform you again if there are any technology or software updates on our product.

Technical Specifications

Model	N. W.	G. W.	Carton Size
FB3500-10A300-1P	348.3LBS (158Kg)	401.2LBS (182Kg)	23.8*23.8*65.6 inch (605*605*1665 mm)

Voltage	Capacity	Volume	Flow
AC 220V/60Hz	6.5HP (4.7kW±10%)	80Gallon (303L)	15.5 SCFM ±5%@ 90 PSI

SAFETY



Note / Remark.



Caution / Warning.



Read the instruction manual.



Read this material before using this product. Failure to do so can result in serious injury. Save This Manual.



Assembly precautions

1. Assemble only according to these instructions. Improper assembly can create hazards.
2. Wear ANSI-approved safety goggles and heavy-duty work gloves during assembly.
3. Keep assembly area clean and well lit.
4. Keep bystanders out of the area during assembly.
5. Do not assemble when tired or when under the influence of alcohol, drugs or medication.
6. Weight capacity and other product capabilities apply to properly and completely assembled product only.
7. Assemble on a flat, level, hard and smooth surface capable of safely supporting a Vertical Air Compressor



Use precautions



ELECTRICAL SAFETY-TO PREVENT SERIOUS INJURY AND DEATH FROM TIPPING:

- The power supply environment of this product must have a good grounding device, must use a three-core plug, and with a well-grounded three-hole socket to ensure good grounding of this product.
- Three-phase power supply air compressor, must use three-phase five-core wire, with good grounding, after the cable is connected, start to check whether the motor rotation direction is consistent with the direction of the arrow of the main engine, if the opposite direction of the arrow, please switch the two live wires, the wire diameter of the cable is different due to the different power and choose different, Refer to the three phase cable diameter selection table in Chapter 2 of this manual for specific wire diameter selection.
- Before powering this product, please make sure that the power supply you provide can meet the input power information marked near the power input port of this product.
- Do not share the socket with other electrical appliances, in case the voltage is unstable sometimes, resulting in damage to the product.
- When maintaining/repairing or cleaning the product, please be sure to unplug the power cord to ensure that the product is completely powered off before operation.
- Regularly check whether the power cord and power plug are damaged, and make sure that the power cord is not squeezed by other items.



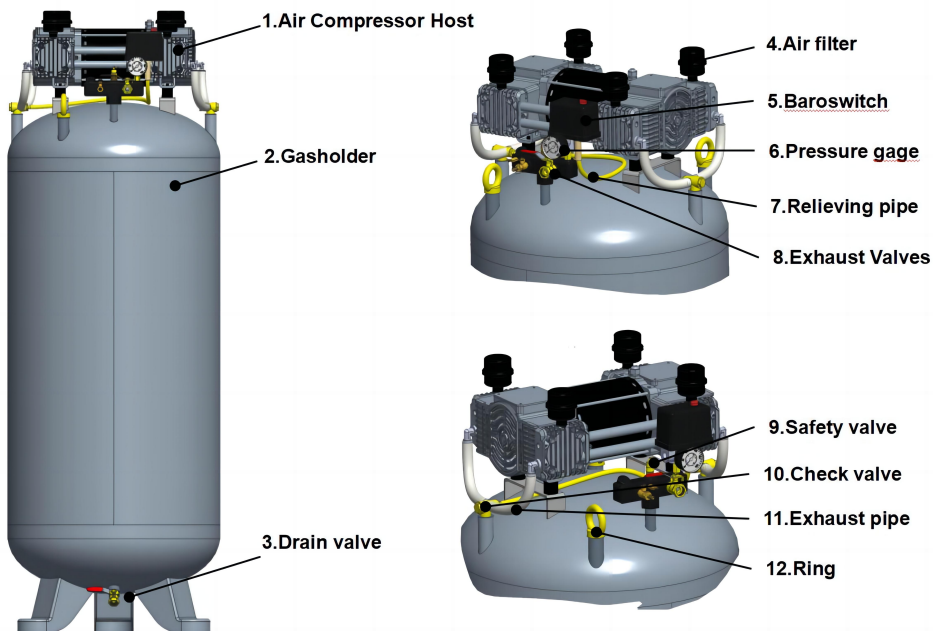
WARNING!

DO NOT let comfort or familiarity with product (gained from repeated use) replace strict adherence to the product safety rules. If you use this product unsafely or incorrectly, you can suffer serious personal injury.

Preparation

Before beginning assembly of product. make sure all parts are present. Compare parts with package contents list and hardware contents list. If any part is missing or damaged. do not attempt to assemble the product.

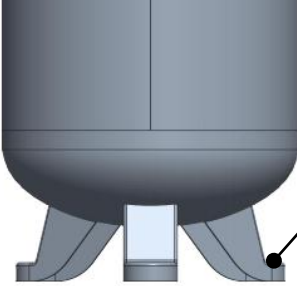
General Assembly drawings



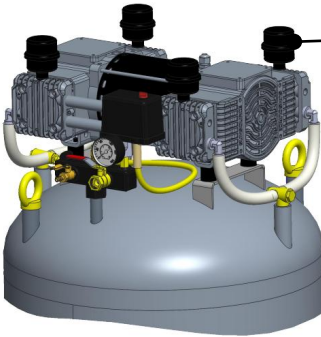
Packing list

Serial number	Name	Serial number	Name
1	Air Compressor Host	7	Relieving pipe
2	Gasholder	8	Exhaust Valves
3	Drain valve	9	Safety valve
4	Air filter	10	Check valve
5	Baroswitch	11	Exhaust pipe
6	Pressure gage	12	Ring

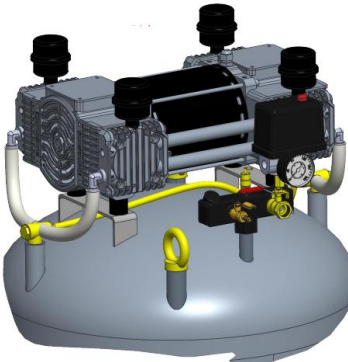
Installation



STEP1:To prevent collision and collapse of the machine, fix the machine to the ground with foot bolts before use.

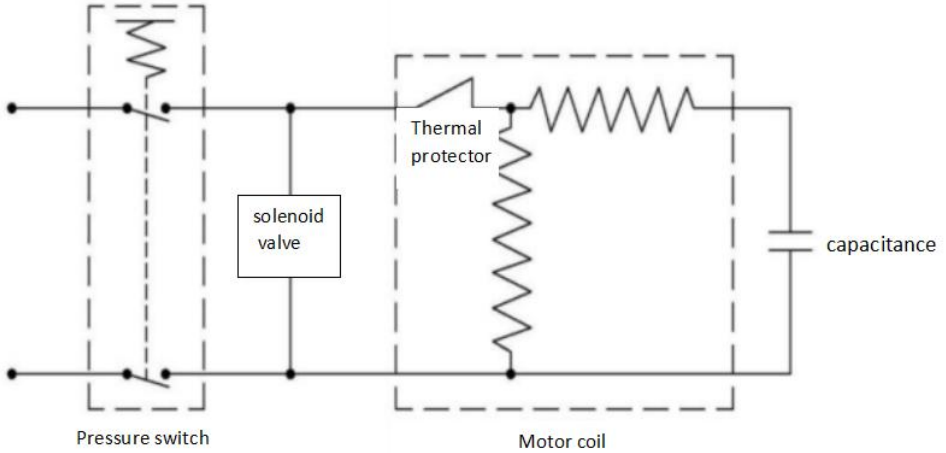


STEP2:Install the four air filters at the air compressor intake ports



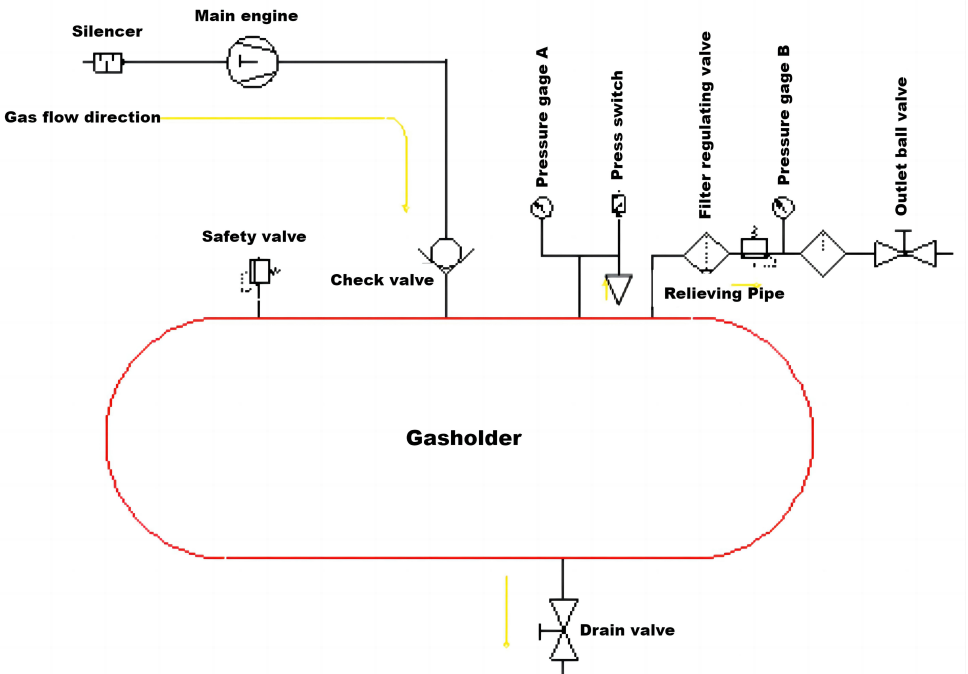
STEP3:Disassemble the screws fixing the cover shell of the air pressure switch, remove the cover shell, connect the external cable to the air pressure switch, and then fasten the cover shell again.

Electrical principle chart



Description: The motor is single-phase 220V/60Hz, and the pressure switch is connected to the external power supply terminal. The pressure switch controls the power supply and power failure of the motor through the set pressure sensing.

Gas circuit



MAINTENANCE/ Service

- 1) The electric oil-free air compressor is oil-free lubrication, and it is strictly prohibited to fill any lubricating oil.
- 2) The machine should be used in the process of drainage once every one to two days, cleaning the noise filter.
- 3) If the electric oil-free air compressor stops suddenly and cannot be restarted in a short time (the voltage is normal) during the working process, it may be because the motor of the air compressor head works for a long time is overheated, and the motor heat protector automatically disconnects the power to protect the motor. This is a normal phenomenon. When the temperature decreases, the compressor will automatically start and continue to work.
- 4) The electric oil-free air compressor can not start normally, please check whether the power supply is normal, whether the power plug contact is good, if these are normal, it may be the motor itself or the control system fault, if you can not solve it by yourself, please contact our company through the seller for maintenance.

Air compressor common fault maintenance

Fault Phenomenon	Possible Reasons	Treatment
The motor can not be turned and there is no sound	<ol style="list-style-type: none">1. No power on2. Pressure switch disconnected3. Fuse blown4. Overload protector in protection state5. Pressure switch damaged6. motor stator winding burned7. Time relay dropped or damaged8. AC contactor damaged	<ol style="list-style-type: none">1. Check the plug and switch2. Reset the switch and determine the cause3. Replace the fuse4. The motor will restart after cooling5. Contact a reliable service center6. Replace the stator7. Check or replace8. Check or replace
The motor has a current sound but does not run or the speed is very slow	<ol style="list-style-type: none">1. The voltage is too low.2. The capacity of the starting capacitor is reduced or damaged.3. The motor coil is short circuit or open circuit	<ol style="list-style-type: none">1. Check that the voltage is not less than 10% of the rated voltage.2. Check or replace the voltage.3. Contact the reliable service center
Overload protector repeatedly cuts off power	<ol style="list-style-type: none">1. voltage is too low,2. ventilation is bad, the temperature is too high,3. three-phase motor inversion,	<ol style="list-style-type: none">1. Check the voltage, not less than 10% of the rated voltage2. Put the air compressor in

	motor temperature is high	a well-ventilated place 3. check and exclude
The pressure of the air compressor drops after shutdown	1. The air channel connection is loose and leaks. 2. The drainage valve is open. 3. The check valve leaks	1. Check and remove the drainage valve. 2. Tighten the drainage valve. 3. Remove and clean the drainage valve
The discharged gas contains a lot of water	1 .There is a large amount of water in the gas storage tank. 2. The humidity is too high	1. Drain the water in the gas storage tank 2. Move the air compressor to a place with low temperature for use, or use an oil-water separator
The air compressor keeps running	1. Air pressure switch is damaged 2. There is leakage	1. Replace the air pressure switch. 2. Check and remove
The air compressor vibrates	1. Fastener loose 2 .valve plate damaged 3 .support pad damaged or lost 4 .motor out of phase	1. Check and remove. 2. Check and replace. 3. Replace the foot pad. 4. Check and remove
The air compressor is slow or can not reach the specified pressure	1. The drainage valve is open, 2. air filter is blocked, 3. pipeline air leakage, 4. valve plate poor action or foreign matter or air leakage, 5. piston ring with the cylinder excessive wear	1. Tighten the drainage valve 2. Clean or replace the filter element 3. Check and remove the filter. 4. Clean or replace the filter. 5. Replace the new product
High operating frequency of air compressor	1. Pipeline leaks 2. The gas consumption of the gas equipment is greater than the gas production of the air compressor. 3. The sewage in the gas storage tank is not discharged	1. Check and exclude. 2. Replace other models of air compressors. 3. Exhaust the water in the air storage tank
The upper drainage valve does not discharge water	line clogging	Check and exclude
abnormal sound	1. Fastener loose or damaged 2. piston ring with cylinder excessive wear 3. foreign matter into the air compressor 4. Large swing of the crank	1. Check and replace 2. Replace new products 3. Check and exclude 4. Check and replace

Attention

1. In the process of work, ensure that there are no objects that can be reached within the whole range of travel that can be moved.
2. The gas storage tank should be drained regularly, usually one to two days. The sewage discharged from the gas storage tank shall be treated in accordance with the local laws and regulations of the user.
3. Clean the silencer often.
4. When replacing electrical components, the power supply must be cut off.
5. When maintaining and cleaning the machine, the power supply must be cut off.
6. For untrained personnel, use dental electric oil-free air compressor to avoid wrong operation.
7. The maintenance of electric oil-free air compressor must be carried out by trained professional maintenance personnel.
8. The elderly, children, the mentally disabled and the mentally ill must be supervised by special persons to avoid the damage caused by their control of the dental electric oil-free air compressor.
9. It is prohibited to use electric oil-free air compressors when it is known or should be foreseen that electric oil-free air compressors may cause harm to personnel.
10. After retiring the electric oil-free air compressor, the processing of capacitance and electronic components should comply with the local laws and regulations of the user.
11. After two months of installation and use, the connection bolts of the electric oil-free air compressor must be checked. If they are loose, they must be tightened immediately. Check it every six months after that.
12. Electric oil-free air compressor is strictly prohibited from filling any lubricating oil.
13. When maintaining the electric oil-free air compressor, the pressure in the air storage tank should be discharged before maintenance.
14. The pressure in the air storage tank should be discharged before the electric oil-free air compressor is moved or transported.
15. After six years of use, the electric oil-free air compressor storage tank should be tested for pressure resistance.
16. If the head of the electric oil-free air compressor is damaged in the transportation process, the safety valve, pressure gauge, pressure controller, gas storage tank and other related parts should be sent to the relevant local departments for inspection or feedback to dealers for repair and replacement.

Disposal

This product should be disposed of in accordance with local regulations. If you are unsure how to proceed, contact your local authority.

Only qualified technicians are authorized to undertake the repair of Vertical Air Compressor. For your safety, please observe all safety notes, precautions, and details in this manual.

Warranty

1. This warranty shall only cover claims for damage due to a fault in the product's manufacture
2. If a warranty claim is made, the party entitled to warranty cover must present the proof of purchase, including the purchase date.
3. Customers' satisfaction is always the motivation of our brand growth. We promise to help you solve any issues. Please just let us know if you need help.

OUR SERVICE TEAM PROMISES TO REPLY TO YOUR MESSAGE WITHIN 24H.

Scope of Warranty

1. We guarantee that VEVOR products are produced in accordance with ISO 9001 Quality Management procedures and are free of manufacturing defects for the period of warranty.
2. This warranty covers faults in the products due to manufacturing defects within 1 year from date of purchase. After inspection by sales representative, defective products will be replaced or repaired with equivalent goods free of charge.
3. Any warranty claim made during warranty period shall not extend the overall period of warranty coverage.
4. Warranty periods: Warranty claim date

Imported to USA: Sanven Technology Ltd.
Suite 250, 9166 Anaheim Place, Rancho Cucamonga, CA 91730

VEVOR[®]

TOUGH TOOLS, HALF PRICE

Technical Support and E-Warranty Certificate
www.vevor.com/support