

# **VEVOR<sup>®</sup>**

**TOUGH TOOLS, HALF PRICE**

Technical Support and E-Warranty Certificate [www.vevor.com/support](http://www.vevor.com/support)

## **BABY WALKERS**

**MODEL: W2251DU2**

We continue to be committed to provide you tools with competitive price.

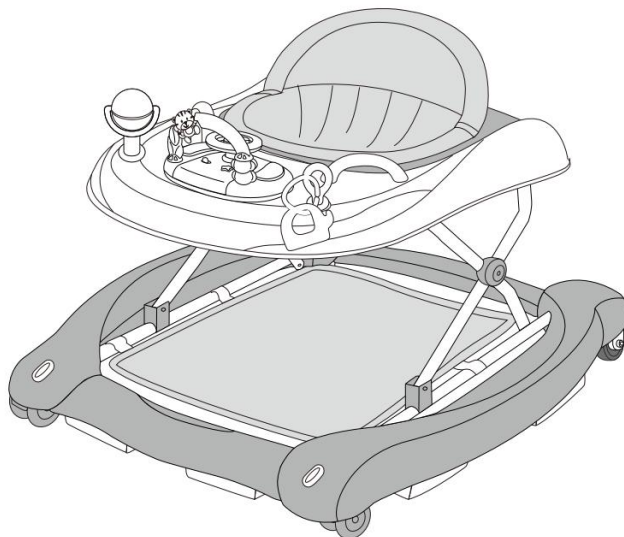
"Save Half", "Half Price" or any other similar expressions used by us only represents an estimate of savings you might benefit from buying certain tools with us compared to the major top brands and does not necessarily mean to cover all categories of tools offered by us. You are kindly reminded to verify carefully when you are placing an order with us if you are actually saving half in comparison with the top major brands.

# VEVOR<sup>®</sup>

TOUGH TOOLS, HALF PRICE

## BABY WALKERS

MODEL: W2251DU2





### NEED HELP? CONTACT US!

Have product questions? Need technical support? Please feel free to contact us:

**Technical Support and E-Warranty Certificate**  
**[www.vevor.com/support](http://www.vevor.com/support)**

This is the original instruction, please read all manual instructions carefully before operating. VEVOR reserves a clear interpretation of our user manual. The appearance of the product shall be subject to the product you received. Please forgive us that we won't inform you again if there are any technology or software updates on our product.

	<b>Warning</b> -To reduce the risk of injury, user must read instructions manual carefully. Failure to follow instructions in the manual can result in child's safety.
	Never leave child unattended.

## IMPORTANT SAFEGUARDS

Thank you for using this product. In order to make sure that you can operate the machine correctly, read this instruction carefully before operation and keep it properly for future reference. Please be sure to read the precautions and safety rules on this page to ensure your safe use.

This manual will outline safety warnings and precautions, operating, maintenance and cleaning. The warnings and instructions reviewed in this manual cannot cover all possible conditions and situations that may occur. Caution and common sense are not built into this product, since we believe that the uses will comply with these codes. If you have any problems, please call us. Do not try to fix the problems yourself, or it will cause injury or property damage.

### **Please read ALL the instructions before using your product.**

1. Please use the battery specified in the manual.
2. Before using,remove and dispose of any plastic bags and other packaging(e.g fasteners,fixing ties,etc.) and keep them out of reach of children, to avoid choking hazard.
3. Before using,check that the product and all of its components have not been damaged during transportation.Check regularly that the product is not broken or damaged.If the product is broken or damaged,keep out of reach of children.
- 4. WARNING ! STAIR HAZARD: Avoid serious injury or death. Block stairs/step securely before using walker even when using parking brake. To ensure that the walker in normal use not overturned.**
- 5. Only use the baby walker frame on flat and stable surfaces.**
- 6. Never leave child unattended.**
- 7. Always keep child in view while in walker.**
- 8. WARNING ! The child will be able to reach further and move rapidly when**

**in the walking frame. Prevent access to stairs, steps and uneven surfaces, slopes or unstable floors, swimming pools or other sources of water.**

9. Keep away from fire, heating, cooking utensil, stoves etc to avoid burns .

10. Remove hot liquids, electrical cables and other potential hazards from reach.

11. Prevent collisions with glass in doors, windows and furniture.

12. Do not use the product if any components are broken or missing.

**13. Warm prompt :To avoid fatigue, it is best to use the walking mode for no more than 30 minutes each time.**

14. This product is intended only for a child who can sit up by itself and until it is able to walk by itself or under 75cm height or weighs more than 12kgs. Overload will affect the stability of the walker.

15. Do not use accessories or replacement parts other than those approved by the

16. Do not immerse the product in water or any other liquid.

17. Check the product for looseness and correct installation before each use

18. If the machine is not to be used for a long period of time, remove the battery, clean and cover it and store it in a dry and safe place.

19. Do not leave the product hanging over the edge of table or counter or let it come into contact with any hot surfaces.

20. Please clean it regularly. Care and maintenance is recommended after use. Gently wipe the surface with a clean wrung-out cloth and check if there are damage or looseness of the components.

21. This appliance is not intended for use by persons with reduced physical, sensory or mental capabilities, or lack of experience or knowledge, unless they have been given supervision or instruction concerning the use of the appliance by a person responsible for their safety.

22. The walker contains small parts and to avoid children swallow by mistake, should be assembled by adults with provided accessories. Recommended fastener torsional moment  $3N \cdot m$ .



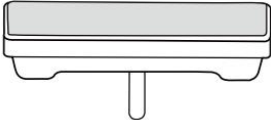
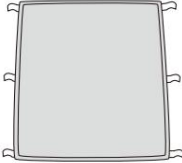

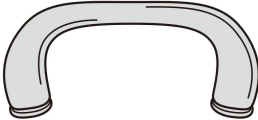



23. Before using this product , please Make sure good height and setting has been locked before. Do not change the height when your child is in the walker.

24. Warning! Make sure children's feet can touch the floor. when you carry the walker can't put the baby walkers in .

25. Warning! Make sure battery ( compartment / cover ) is securely fixed. Avoid children take out the battery to play.

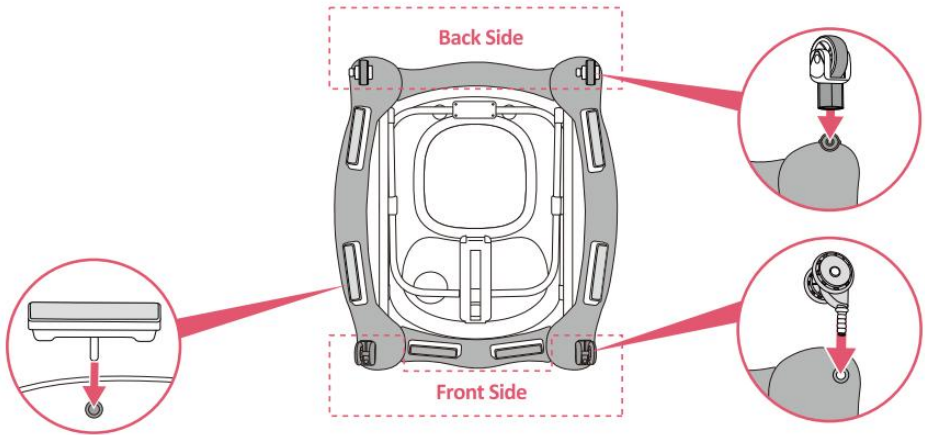
## PARTS LIST

1. Before using the appliance for the first time, peel off any promotional and packaging materials and check that the product is clean and dust-free.
2. Please dispose of all plastic bags carefully and keep them away from children and pets.
3. Check all components provided according to the list in this manual. Make sure you have all of the parts listed.
4. Although paying particular attention when manufacturing this product, you must be careful during the assembly process to avoid being scratched by sharp edges.
5. The product must only be assembled by an adult. For the correct assembly of the product, please refer to the following instructions.

		
<p>A. wheels x2pcs</p>	<p>B. 2 rear wheels x2pcs</p>	<p>C. brake pads x6pcs</p>
		
<p>D. Foot rest x1pcs</p>	<p>E. Baby walker frame x1pcs</p>	<p>F. Handle x2pcs</p>
		
<p>G. Padded seat x1pcs</p>	<p>H. Toy set</p>	<p>I. Electronic play tray</p>

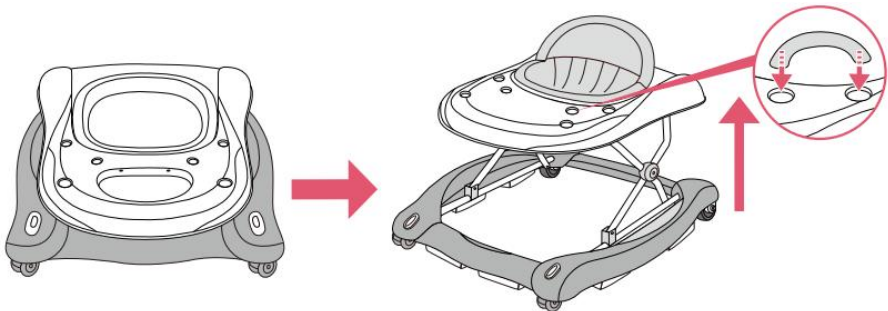
## ASSEMBLING PROCEDURES

### STEP1



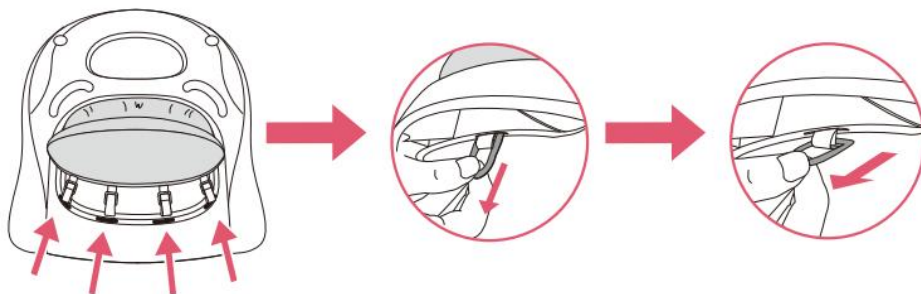
1. Turn the baby walker frame upside down. Fix the wheels and the brake pads in the appropriate housings. Ensure that they are firmly pushed all the way into the housing on the down base of the walker.

### STEP2



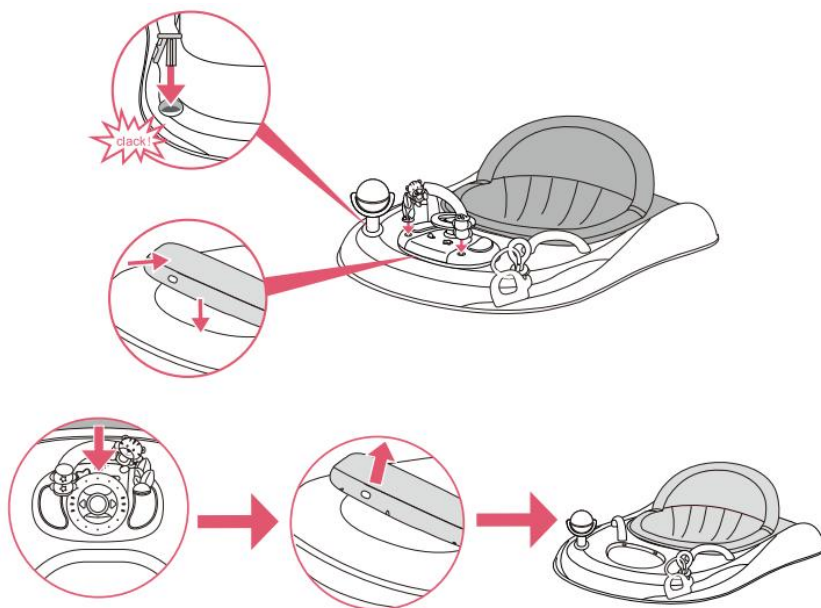
2. Open the baby walker frame in the in-use position, ensuring that all wheels touch the floor. Slowly raise the tray by pulling it in an upward direction, until a click indicates that the frame has been locked correctly in one of the three positions.

### STEP3



3. Insert the plastic rings of the padded seat in the slots located along the upper edge of the walker frame. Pass the rings through the slots and tug them until they clear the passage, then release them, ensuring that they are correctly locked in the position and cannot recede into the slot.

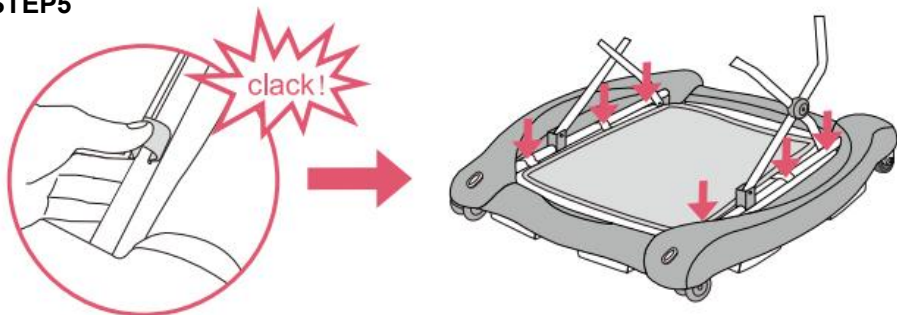
### STEP4



4. Insert the toys bar into the two holes on the top base. Put the music toy board onto the groove on the top base, listen for 3 clicks to make sure it's installed firmly.

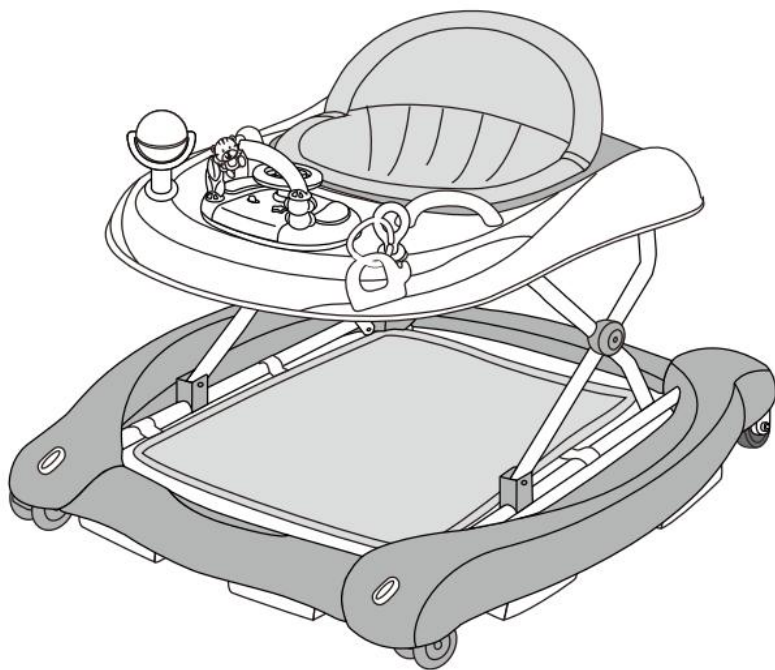
Pull the ring of the music toy tray onward seat direction, then pull up with certain strength to disassemble the music toy tray from the upper tray.

## STEP5



5. Place the hooks on to the tube at the corresponding position to fix the foot rest well when in rocking function.

## STEP6

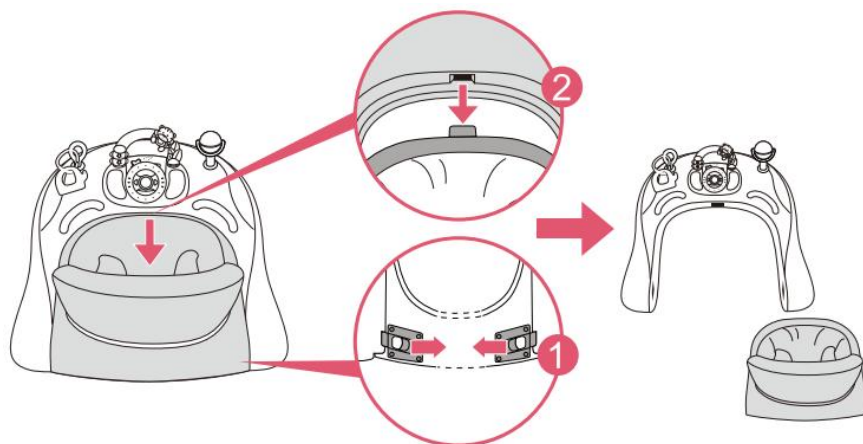


6. Completely assembled.



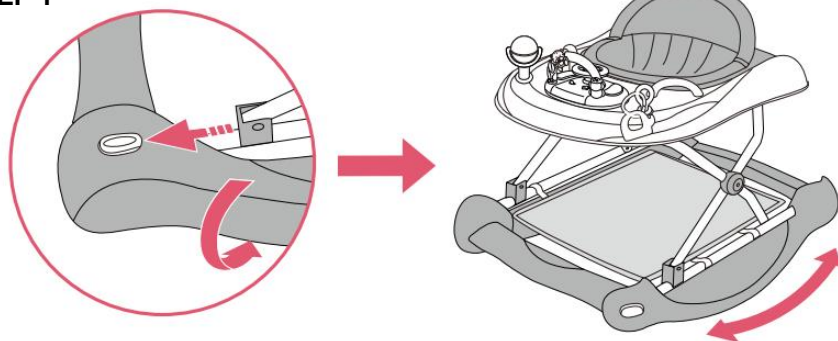
## HOW TO REMOVE THE SEAT PART

Pull the buckles at both sides towards the middle and pull out the seat part.



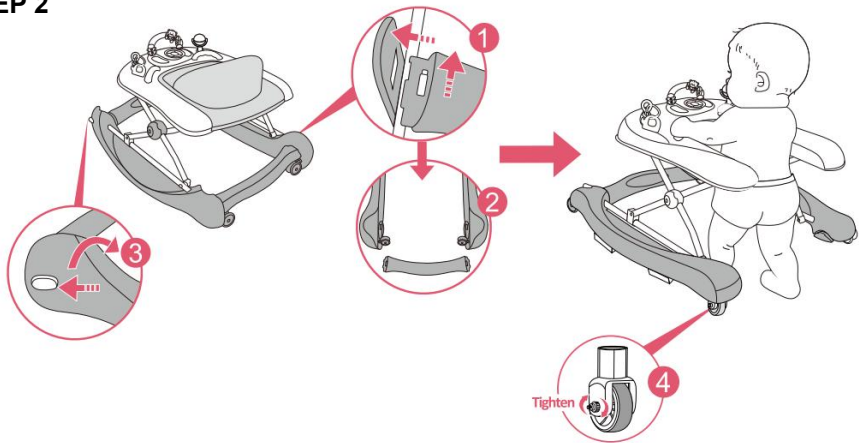
## CONVERT WALKER TO ROCKER OR PUSHABLE WALKER

### STEP 1



1. Hold the front edge of two sideboards, use two thumbs to pull buttons as arrows shown, then turn the sideboards outwards 90 degrees. The walker change to rocker.

## STEP 2

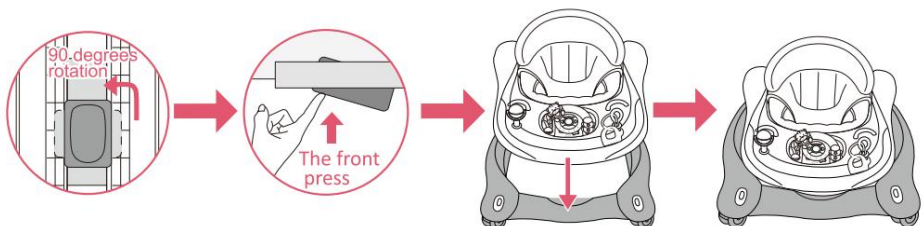


2. Press the paddle outward and take away the rear cross bar when on the rocker condition, then pull the buttons to turn the both sides of down base to walker condition. The Pushable walker is ready.

**WARNING: To convert to a push-walking mode, for safety, firstly tighten the two rear grip wheels, then take off seat and remove detachable rear bar on bottom base.**

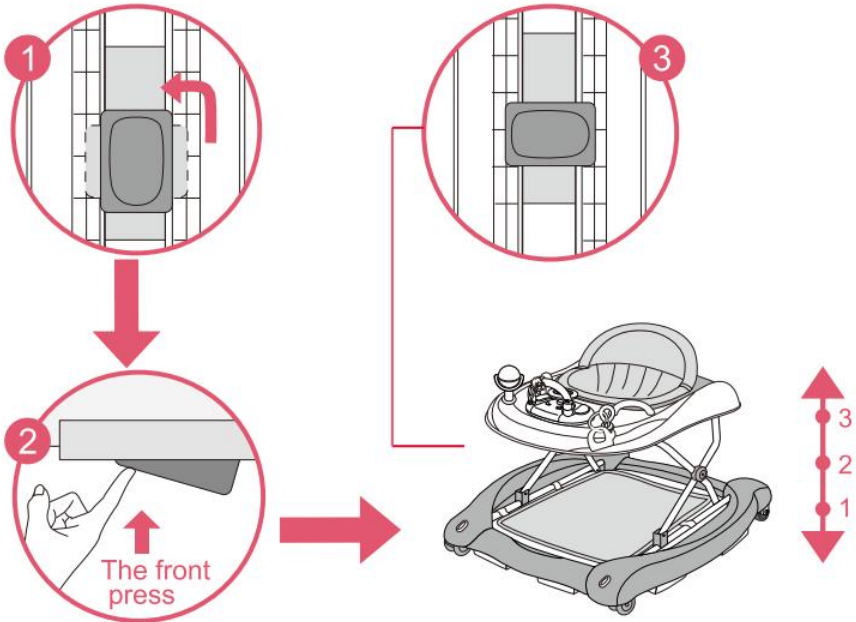
## HOW TO FOLD THE WALKER

### STEP 1



Firstly, pull the button under top tray, make sure the button finally parallel to the adjusted-device (see 1st picture). Meanwhile, press up the front position (see 2nd picture), and press down the top base till the end. The frame folds up completely.

## CONVERT WALKER TO ROCKER OR PUSHABLE WALKER



**WARNING:** When opening, closing or adjusting the walker, ensure that your child is at a safe distance. Before placing the child in the walker ensure that the secondary lock button is correctly locked again.

10. To adjust the seat's height, remove the child from the baby walking frame, pull the safe button located under the small tray table and rotate it to 90 degrees. keep the safe button pressed, then raise or lower the small table until the desired position is reached, then pull the safe button and rotate it to 90 degrees again to lock the small table. ( If it is a automatic secondary lock, please make sure the lock has rotated to 90 degrees.)

## FITTING AND /OR REPLACING BATTERIES

### WARNING!

The toy of the walker frame requires 3X"AA"1.5Volt alkaline type batteries (not included).

- Batteries must only be fitted by an adult.
- To fit and/or replace batteries: loosen the screw on the battery compartment cover with a suitable screwdriver, press the tab and remove the battery compartment cover. Then remove the spent batteries and fit new ones, ensuring that they have been fitted in the correct polarity, as shown inside the battery compartment. Replace the battery cover and tighten the screw.
- Always keep batteries and tools out of reach of children.
- Always remove the batteries if the toy will not be used for a long period.
- Only use alkaline batteries of the same type of equivalent to the type recommended for the correct function of this product.
- Never mix new and old batteries, or different types of batteries.
- Do not burn or dispose of spent batteries into the environment. Dispose of spent batteries at an appropriate differentiated collection point.
- The use of rechargeable batteries is not recommended and cannot be used.
- Non-rechargeable batteries are not to be recharged.
- Rechargeable batteries are to be removed from the toy before being charged.
- Rechargeable batteries are only to be charged under adult supervision.
- Batteries are to be inserted with correct polarity.
- Exhausted batteries are to be removed from the toy.
- Do not short-circuit the battery terminals.

## CLEANING AND STORAGE

1. If the machine is not to be used for a long period of time, remove the battery, clean and cover it and store it in a dry and safe place.
2. Gently wipe the surface with a clean wrung-out cloth and check if there are damage or looseness of the components. Be sure to keep the product dry.
4. Clean the seat with brush or family soap and neutral scour.
3. Please put the parts and accessories together.
5. Prolonged exposure to direct sunlight may cause the fabric and plastics to fade.
6. Keep the product and parts together to avoid loss, and read the instructions and cleaning products before reuse.

**Manufacturer:** Shanghaimuxinmuyeyouxiangongsi

**Address:** Shuangchenglu 803nong11hao1602A-1609shi, baoshanqu, shanghai 200000 CN.

**Imported to AUS:** SIHAO PTY LTD. 1 ROKEVA STREETEASTWOOD NSW 2122 Australia

**Imported to USA:** Sanven Technology Ltd. Suite 250, 9166 Anaheim Place, Rancho Cucamonga, CA 91730

EC	REP
----	-----

E-CrossStu GmbH  
Mainzer Landstr.69, 60329 Frankfurt am Main.

UK	REP
----	-----

YH CONSULTING LIMITED.  
C/O YH Consulting Limited Office 147, Centurion House,  
London Road, Staines-upon-Thames, Surrey, TW18 4AX

**VEVOR<sup>®</sup>**

**TOUGH TOOLS, HALF PRICE**

**Technical Support and E-Warranty Certificate**

**[www.vevor.com/support](http://www.vevor.com/support)**