

VEVOR[®]

TOUGH TOOLS, HALF PRICE

Technical Support and E-Warranty Certificate

www.vevor.com/support

We continue to be committed to provide you tools with competitive price. "Save Half", "Half Price" or any other similar expressions used by us only represents an estimate of savings you might benefit from buying certain tools with us compared to the major top brands and does not necessarily mean to cover all categories of tools offered by us. You are kindly reminded to verify carefully when you are placing an order with us if you are actually saving half in comparison with the top major brands.

FCC Information:

CAUTION: Changes or modifications not expressly approved by the party responsible for compliance could void the user's authority to operate the equipment!

This device complies with Part 15 of the FCC Rules. Operation is subject to the following two conditions:

- 1) This product may cause harmful interference.
- 2) This product must accept any interference received, including interference that may cause undesired operation.

WARNING: Changes or modifications to this product are not expressly approved by the party. Responsible for compliance could void the user's authority to operate the product.

Note: This product has been tested and found to comply with the limits for a Class B digital device pursuant to Part 15 of the FCC Rules. These limits are designed to provide reasonable protection against harmful interference in a residential installation.

This product generates, uses and can radiate radio frequency energy, and if not installed and used in accordance with the instructions, may cause harmful interference to radio communications. However, there is no guarantee that interference will not occur in a particular installation. If this product does cause harmful interference to radio or television reception, which can be determined by turning the product off and on, the user is encouraged to try to correct the interference by one or more of the following measures.

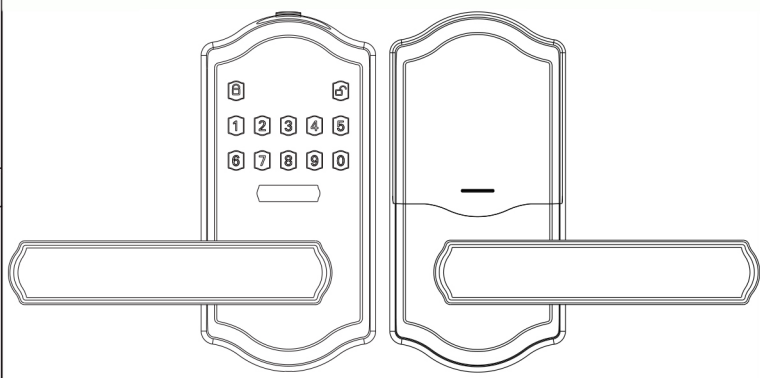
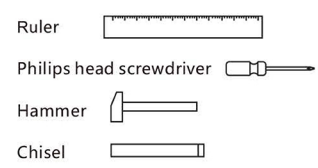
- Reorient or relocate the receiving antenna.
- Increase the distance between the product and the receiver.
- Connect the product to an outlet on a circuit different from that to which the receiver is connected.

This is the original instruction, please read all manual instructions carefully before operating. VEVOR reserves a clear interpretation of our user manual. The appearance of the product shall be subject to the product you received. Please forgive us that we won't inform you again if there are any technology or software updates on our product.

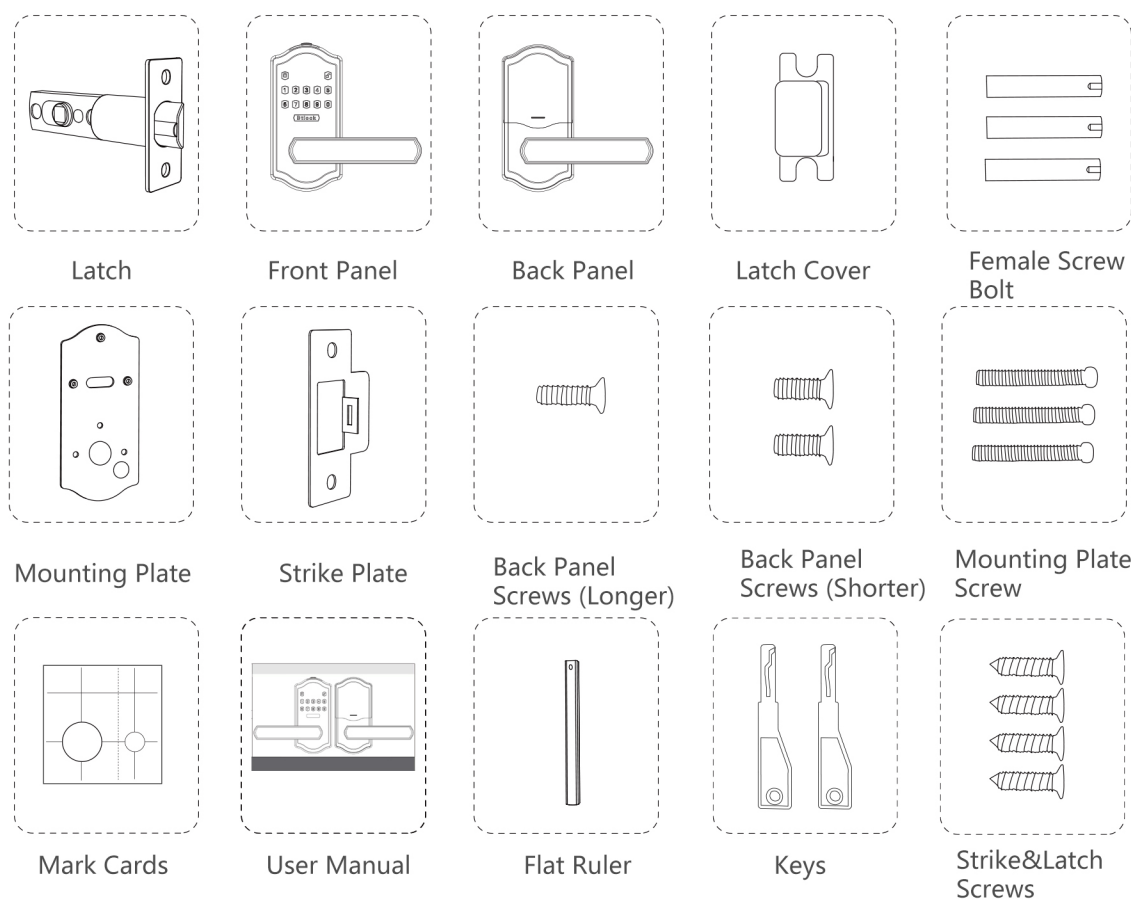
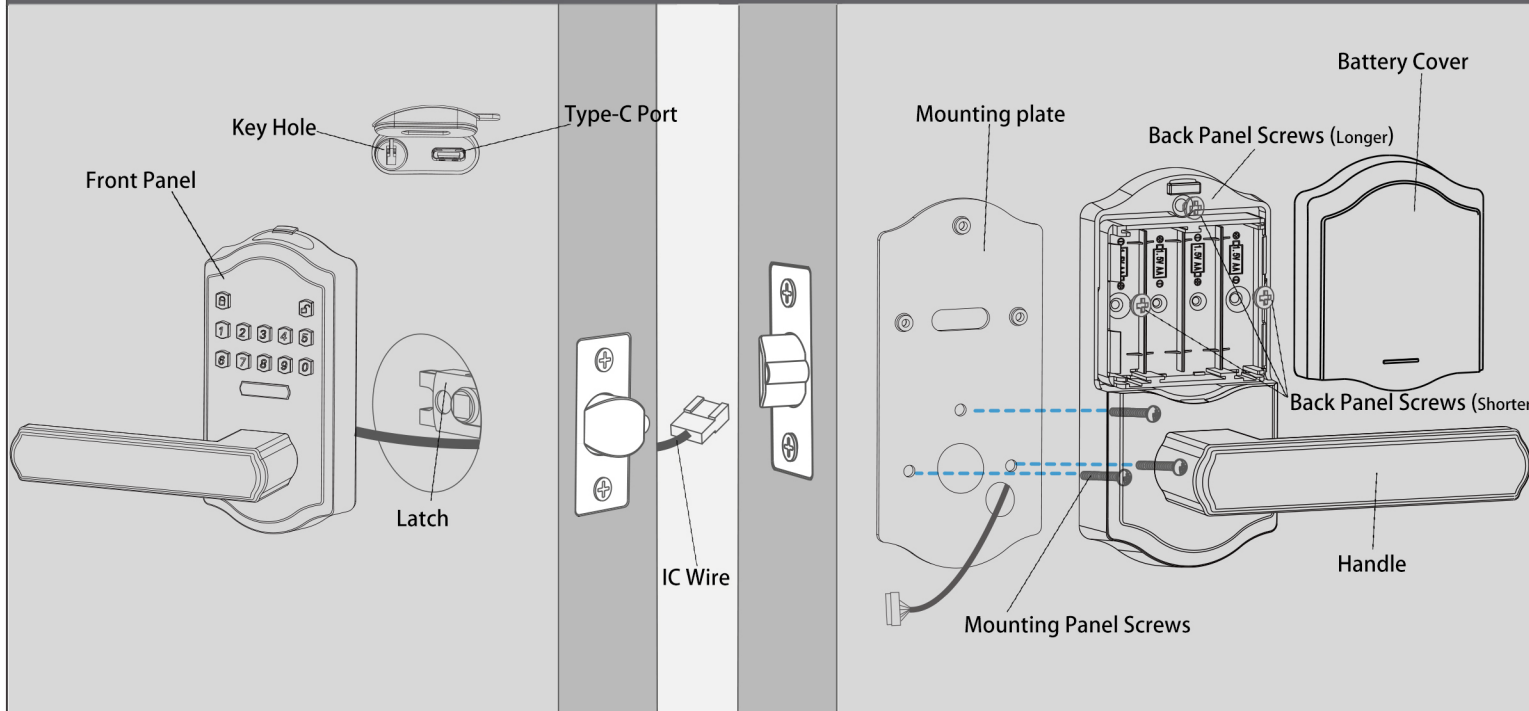
SMART DOOR LOCK

Installation and User Guide

Required tools (not included)



PRODUCT DETAILS



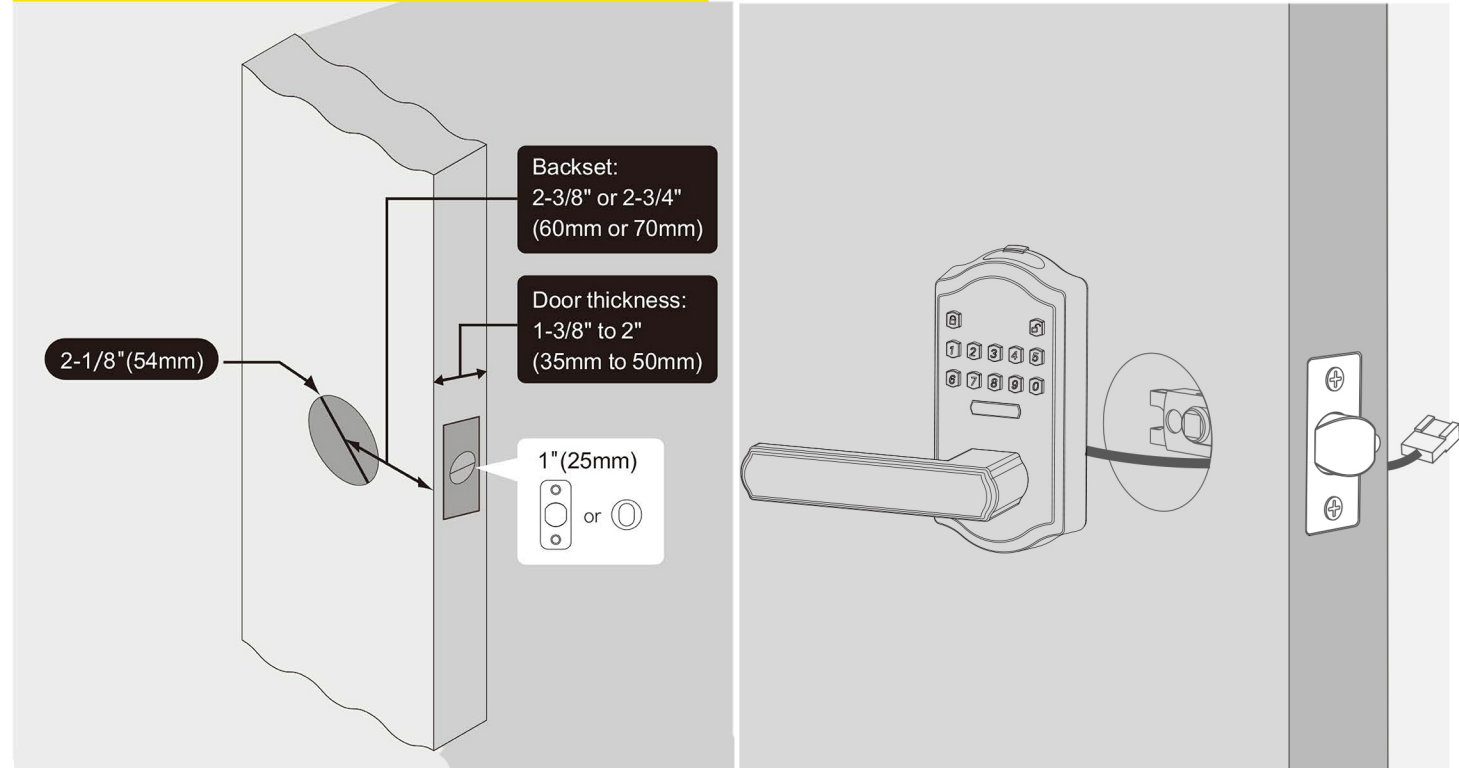
Installation instructions

Battery:

- Use new and NON-rechargeable *4 AA Alkaline batteries for the best use.
- Don't put on batteries until the lock is completely installed.

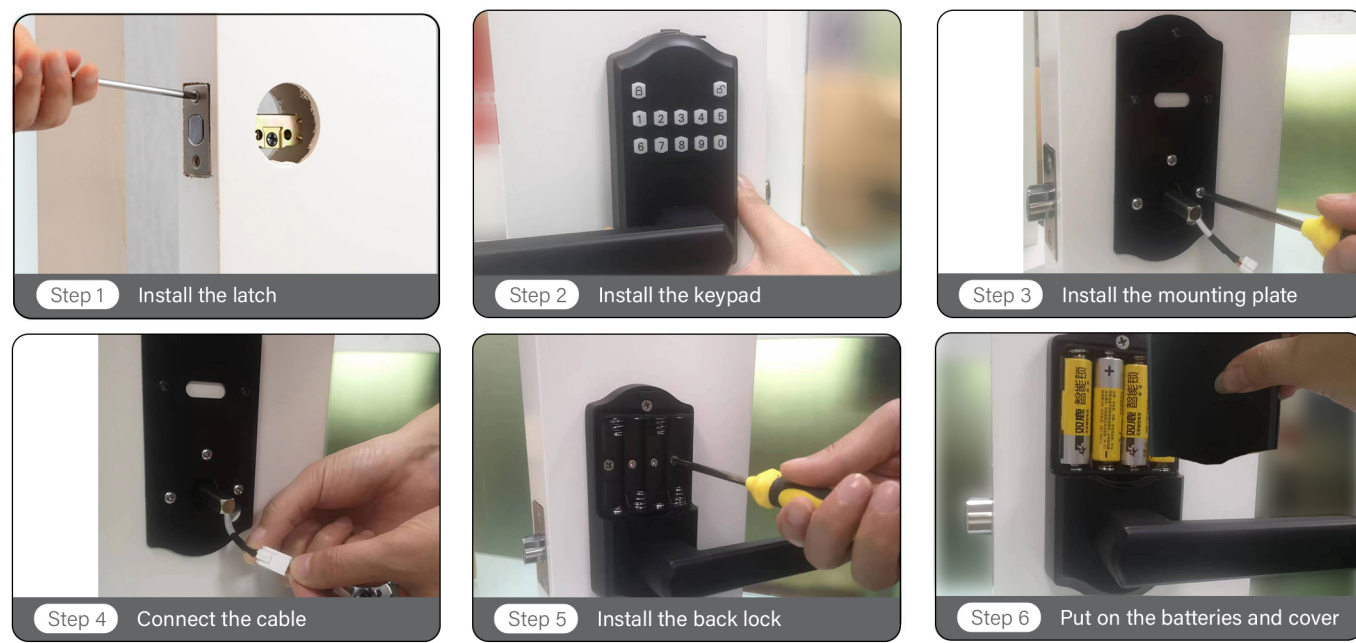
If you have any problems, don't hesitate to contact with us through message or email at the first time.

Before Installing the Lock, Please Check Door Jamb and Door Preparation.



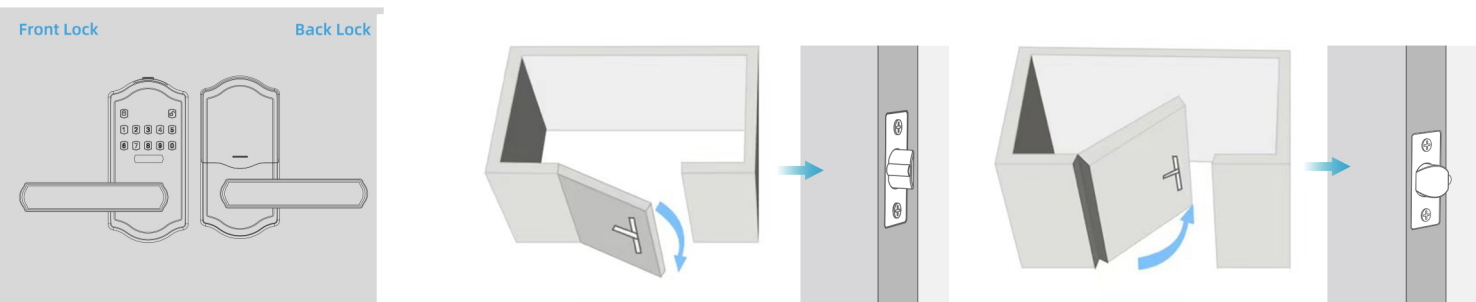
Simple flowchart of installation

Please refer to the next section if you need a more detailed installation process.

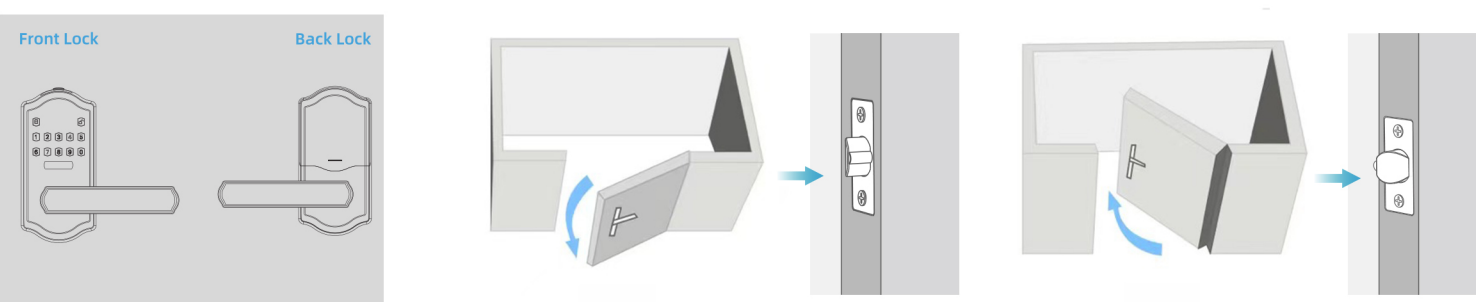


IDENTIFY LEFT/RIGHT HAND DOOR

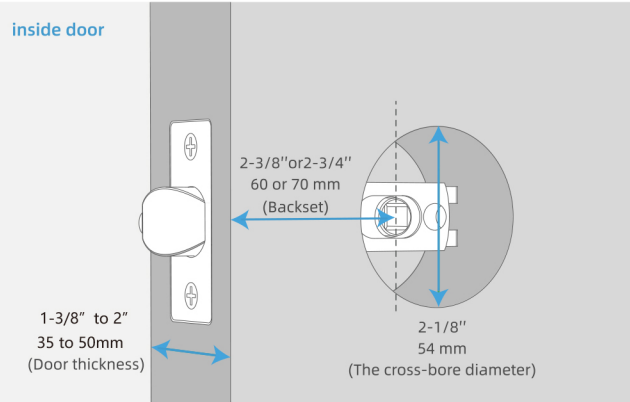
Left hand door: Hinge is on the LEFT



Right hand door: Hinge is on the RIGHT

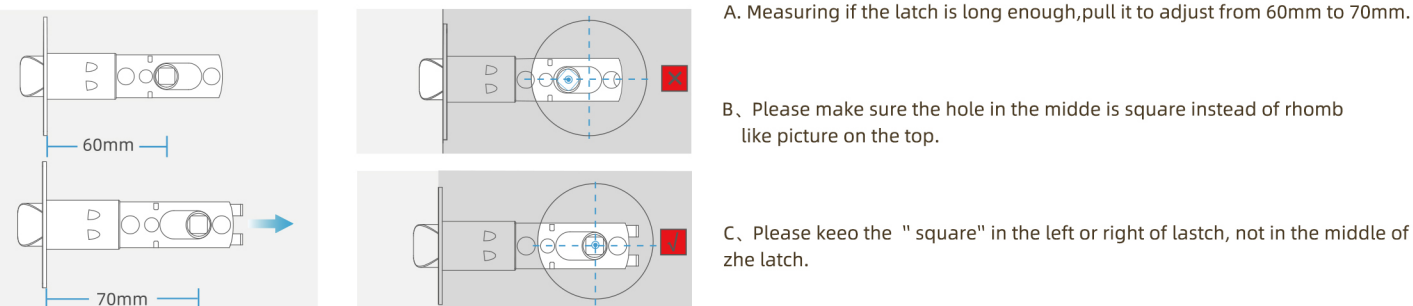


CHECK DOOR MEASUREMENTS



INSTALL THE LOCK

(1) Adjust the latch

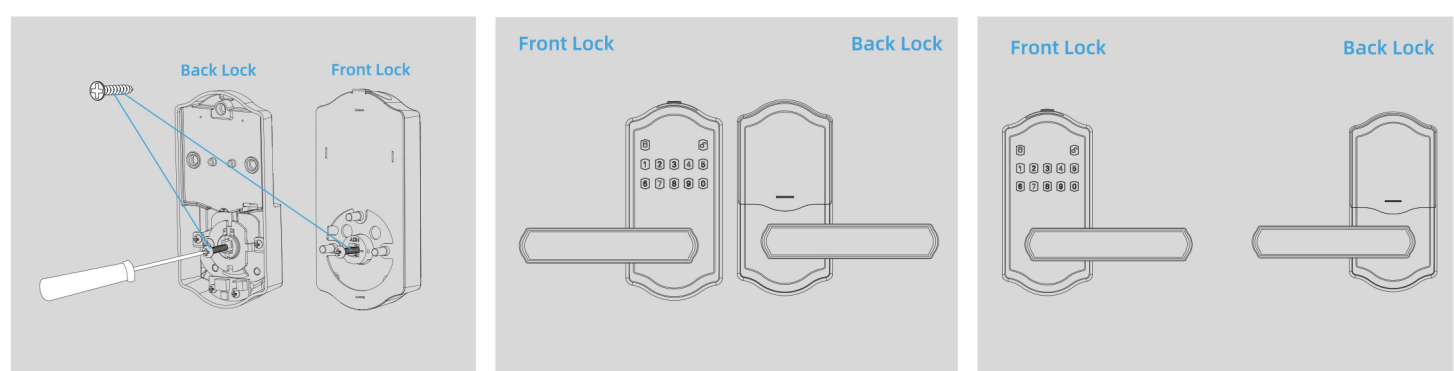


(2) Install the Latch and Strike Plate



INSTALL THE LOCK

(3) Adjust the handle Direction

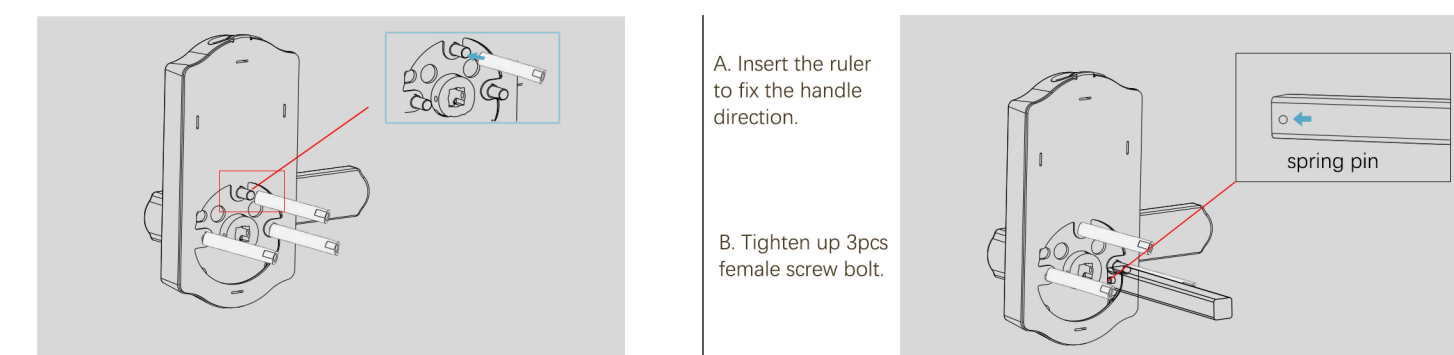


A. Loosen the screws on the front and back panel to adjust the handle direction.

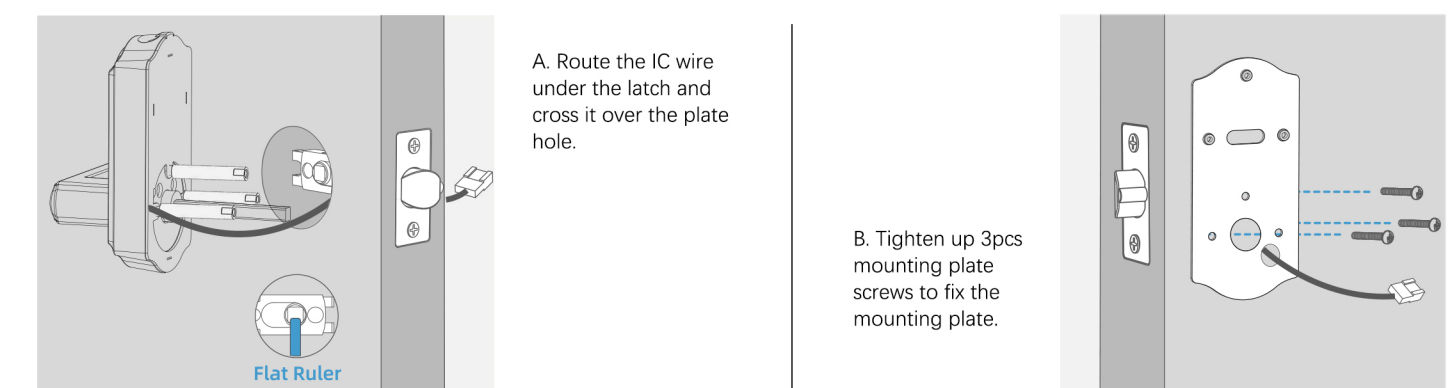
B. Left Hand Door:
Turn the front handle to Left
Turn the back handle to Right

C. Right Hand Door:
Turn the front handle to Right
Turn the back handle to Left

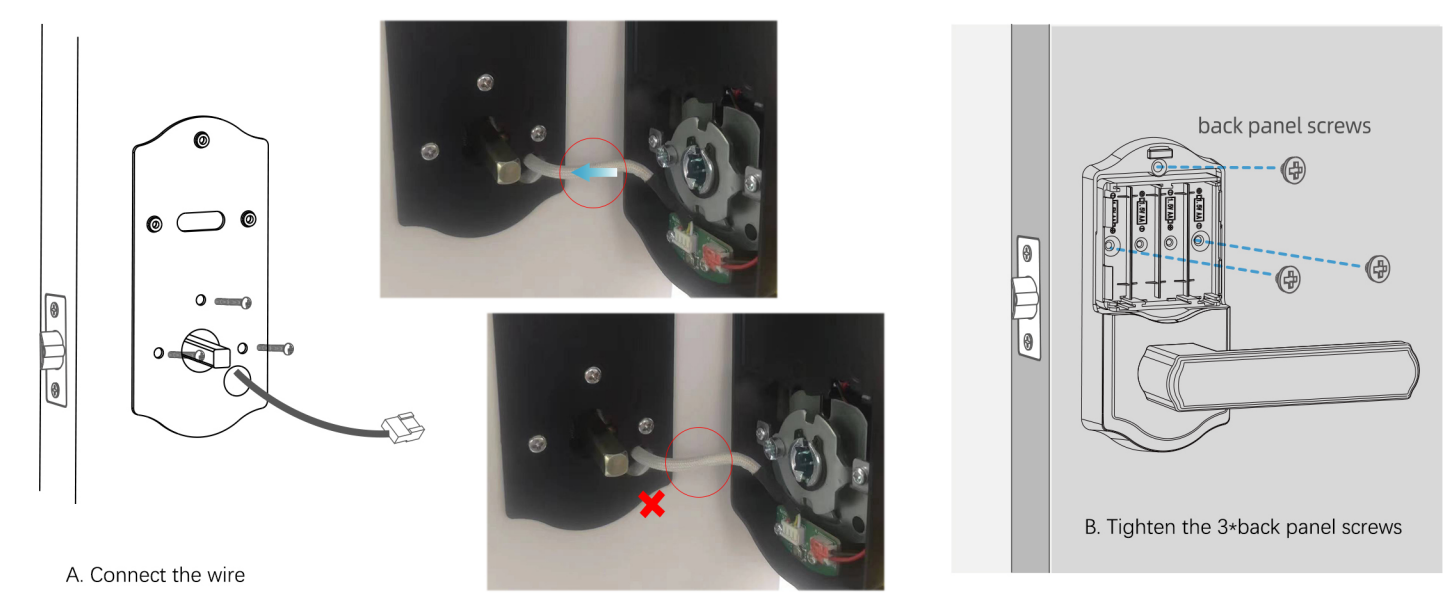
(4) Install the Front Panel



(5) Route the IC Wire & Install the Mounting Plate



(6) Install the Back Panel



TROUBLESHOOTING

• Installation

	Suggested Action
The handle is hard to rotate.	1.Take off the back panel and mounting panel. 2.Check if the IC wire is installed correctly.(Refer to the step " Install the back panel ")
Fail to programming the lock	1.Before installation,restore the lock 2.Please make sure the lock is installed correctly. 3.Please install fresh batteries and make sure the cable is connected correctly.

• Operation

Question	Suggested Action
The keypad is keeping flashing with Beep sound for 4 times.	The batteries are getting low.Please replace with 4*AA new batteries for the best performance(Alkaline batteries,do not use recharge batteries)
Keypad do not respond.	1.Check if the batteries are new. 2.Check if the IC wire is installed corectly.(refer to the step"Install the Back Panel")
Forgot master code/Default programming code is incorrect.	Press the reset button on the circuit board to erase all codes.Once the resetting work is complete,all passcodes will be erased and the progauimming code will return to the default programming code 123456.

★ passage mode : (the passage mode can turn off automatic locking)


- This feature is optional and can be turned off.(Under auto-mode with lock unlocking, press 123+ to set Passage Mode on.Press 123+ , green light flashes for 0.5s with 2 beep sound.)

Passage Mode + 123 +

Attention:

To keep it in passage mode, don't input password to unlock. Once password entered to unlock, passage mode will be turned off accordingly.

SETTING DEFINITIONS

Settings	Default Setting	Definitions
Programming Code	123456	<ul style="list-style-type: none"> • It's required to change it to a code of your own before programming. • 4 - 9 digits in length, Must be different from all other existed User Codes. • If you forget the master passcode, you can reset the lock to factory settings, which restores the default programming code.
Auto Lock	Enabled	<ul style="list-style-type: none"> •This feature is optional and can be turned off.(Under auto-mode with lock unlocking, press 123+ to set Passage Mode on.Press 123+ , green light flashes for 0.5s with 2 beep sound.) •When enabled,the lock will automatically re-lock after 05 seconds.
Manually Lock	Hold "A"	<ul style="list-style-type: none"> • If auto-lock is not set on, you need to do the locking manually. • Passage mode can be released in auto lock mode.
Silent Mode	Disable	<ul style="list-style-type: none"> • The beep sounds when pressing keypad can be muted.
Wrong Code Entry Limit	Enabled	<ul style="list-style-type: none"> • Once the wrong passcode entry limits reach to 5 attempts and wrong fingerprint entry limits to 10 attempts, the lock will shutdown(RED light flashing) for sixty (60) seconds, and it will be released automatically.
Peek-proof digital keypad	Enabled	<ul style="list-style-type: none"> • Prevent code exposure to strangers by entering random digits. Max in 16 digital length. 
User Code	Disable	<ul style="list-style-type: none"> • The lock comes out without any default User Codes. • Must be different from the master code and other user codes. • Up to 150 possible User Codes can be stored in the lock at one time.

Warranty

This manufacturer advises that no lock can provide complete security by itself,this lock maybe defeated by forcible or technicak means or evaded by entry elsewhere on the property,no lock can substitute for caution,awareness of your environment,and common sense.Builder's hardware is available in multiple peformance grades to suit the application. In order to enhance security and reduce risk,you should consult a qualified locksmith or other security professional.

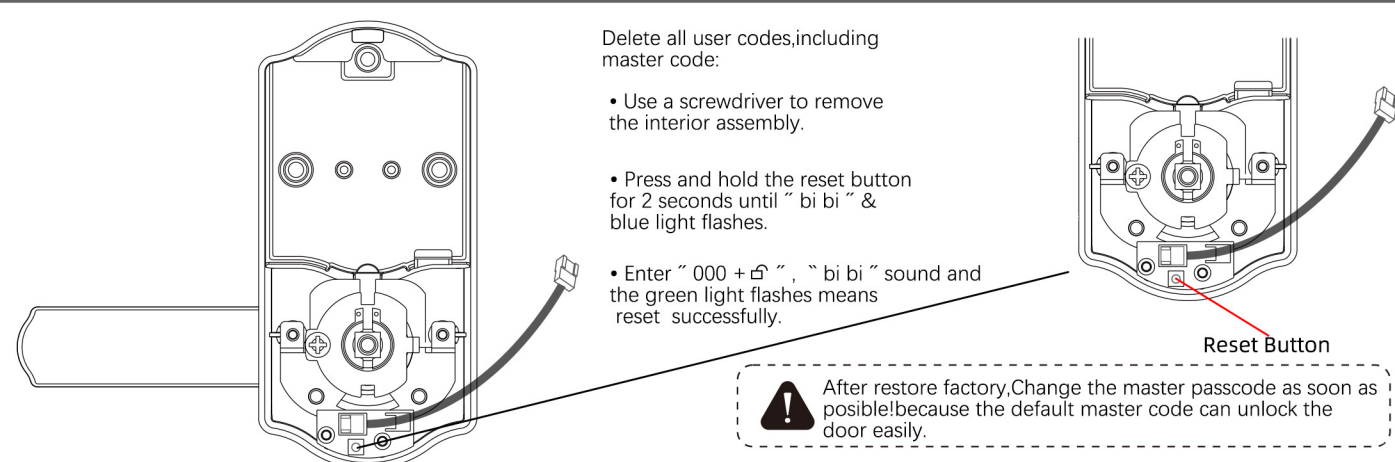
FEATURES

- Three ways to access:code,key and fingerprint.
- Low power consumption,4 AA batteries can work for 1year or 50,000 times.
- Backlit keypad for use in low light environments.
- 1 programming code and 150 user codes.
- Built-in disguise feature to protest your codes from prying eyes max in 16 digital length.
- Low battery under(4.8V±0.1) warning indication.

INDICATOR LIGHT SIGNALS AND BEEP

- Green: A correct code was entered,a beep sound for 1s.
- Blue: Programming in progress,blue light flashes for 1s.
- Red:
 1. An incorrect code was entered,three short been sound.
 - 2.Programming error,three short been sound.
 - 3.Red light flashes and beep after keypad backlit off indicates critically low battery.

HOW TO RESET



QUICK SET

Quick Set: The default programming code is "123456". It's required that you change it to a code of your own before programming.

1. Recommend you hit the small reset button on the circuit board before assembling the unit to the bracket.

Programming Code=PC User Code=UC

click+number to entry the programming mode.

★ Add Programming Code	+ 1 +	PC +	New PC + New PC +
★ Add New User Code	+ 3 +	PC +	New UC + New UC +
Add One-Time Code	+ 7 +	PC +	New UC + New UC +
Turn Sound On & Turn Sound Off	+ 8 +	PC +	1(on) + 2(off) +
Delete User Code	+ 9 +	PC +	User Code +
Change User Code	+ 11 +	Unwant UC+	New UC + New UC +
Delete All User Code At Once	+ 13 +	PC +	
Vacation Mode	+ 14 +	PC +	1(on) + 2(off) +
Passage Mode	+ 123 +		

Under auto-mode with lock unlocking, press 123 + to set Passage Mode on.