

VEVOR®

TOUGH TOOLS, HALF PRICE

Technical Support and E-Warranty Certificate
www.vevor.com/support

Dent Repair Tool Kit

We continue to be committed to provide you tools with competitive price. "Save Half", "Half Price" or any other similar expressions used by us only represents an estimate of savings you might benefit from buying certain tools with us compared to the major top brands and does not necessarily mean to cover all categories of tools offered by us. You are kindly reminded to verify carefully when you are placing an order with us if you are actually saving half in comparison with the top major brands.

[Dent Repair Puller] Instruction

1. Find the dent and clean it with a rag and alcohol.
2. Observe the shape and size of the dent, estimate where to pull the dent out, and mark it with a marking pen.
3. Then clean the glue stick with alcohol to remove the grease on its surface.
4. Insert the glue stick into the glue gun and connect the gun to the power supply, then heat it for about 2-3 minutes till the hot melt glue starts to spill out from the gun.
5. Choose a tab that matches the shape and size of the dent, apply hot melt glue on the tab with the glue gun, remember to start from the center of the tab and in a circle inside and out, and make sure the glue is even and full on the tab. (Please note: Bigger tab should be used for bigger dent because it has stronger traction, vice versa)
6. Align the center point of tab with the dent center point, then quickly put the tab on the dent and slightly press it. (Wait 3-5 minutes till it cools down with only a little temperature when it has strongest viscosity.)
7. Buckle the puller till it is fastened, hold the handle of the puller, impact upwards, gradually increase the force, repeat several times till the surface of the dent flattens or slightly bulges (do not impact too fiercely to avoid the tab off the car body)
8. If the center of some small dents is deeper than around, please use the rubber hammer to tap on the around part, that will make the dent more smooth to process.
9. After repair, spray alcohol on the part covered by glue and remove it with a scraper.
10. Check the result; if not ideal, repeat the above steps till you get what you want.

[Glue sticks] Instruction

- Select correct glue sticks:
1. Transparent glue stick: For Japanese cars which have thin paint. Used for all natural temperature.
 2. Yellow glue stick: For European and American cars which have puller paint. And it is a better choice to deal with small dents.
 3. Black glue stick: For all cars. And the effect is better in the temperature of 20°C-28°C.

[Dent Repair Lifter] Instruction

1. Find the dent and clean it with a rag and alcohol.
2. Observe the shape and size of the dent, estimate where to pull the dent out, and mark it with a marking pen.
3. Then clean the glue stick with alcohol to remove the grease on its surface.
4. Insert the glue stick into the glue gun and connect the gun to the power supply, then heat it about for 2-3 minutes till the hot melt glue starts to spill out from the gun.
5. Choose a tab that matches the shape and size of the dent; apply hot melt glue on the tab with the glue gun, remember to start from the center of the tab and in a circle inside and out, and make sure the glue is even and full on the tab. (Please note: Bigger tab should be used for bigger dent because it has stronger traction, vice versa)
6. Align the center point of tab with the dent center point, and then quickly put the tab on the dent and slightly press it. (Wait 3-5 minutes till it cools down with only a little temperature when it has strongest viscosity.)
7. Buckle the lifter till it is fastened, hold the handle of the downwards, gradually increase the force, repeat several times till the surface of the dent flattens or slightly bulges. Deal with this slowly and carefully.
8. If the center of some small dents is deeper than around, please use the rubber hammer to tap on the around part that will make the dent more smooth to process.

[Dent Repair Bridge] Instruction

1. Find the dent and clean it with a rag and alcohol.
2. Observe the shape and size of the dent, estimate where to pull the dent out, and mark it with a marking pen.
3. Then clean the glue stick with alcohol to remove the grease on its surface.
4. Insert the glue stick into the glue gun and connect the gun to the power supply, then heat it about for 2-3 minutes till the hot melt glue starts to spill out from the gun.
5. Choose a tab that matches the shape and size of the dent, apply hot melt glue on the tab with the glue gun, remember to start from the center of the tab and in a circle inside and out, and make sure the glue is even and full on the tab. (Please note: Bigger tab should be used for bigger dent because it has stronger traction, vice versa)
6. Align the center point of tab with the dent center point, then quickly put the tab on the dent and slightly press it. (Wait 3-5 minutes till it cools down with only a little temperature when it has strongest viscosity.)
7. Buckle the nut, screw it till the surface of the dent flattens or slightly bulges. Deal with this slowly and carefully.
8. If the center of some small dents is deeper than around, please use the rubber hammer to tap on the around part that will make the dent more smooth to process.
9. After repair, spray alcohol on the part covered by glue and remove it with a scraper.
10. Check the result; if not ideal, repeat the above steps till you get what you want.

*Notice:

1. Do not use a car charge glue gun if the dent is on the engine hood. Because you need to start the car, it will cause a high temperature, which will influence the glue stick's effect.
2. Do not repair under the blazing sun because the high temperature of the car body will influence the effect of the glue stick.
3. When applying the glue, remember to start from the center of the tab and in a circle inside and out, and make sure the glue is even and full on the tab.

[Tabs] Instruction

There are 2 kinds of tabs.

1. Plastic tabs

- 1). To dissolve the attached impurity, the plastic tabs should be soaked for 3 hours with alcohol before use.
- 2). Heat the glue sticks with the glue gun, and apply hot melt glue on the tab evenly with proper amount depending on its viscosity and car body condition.
- 3). Put the tab with glue on the dent, slightly press it. Do not press fiercely to ensure a certain thickness of glue.
- 4). Choose the right tabs though observing the shape and size of the dent. Choose thin tabs for cars with soft body and thin paint and thick tabs for cars with hard body and thick paint.

2. Metal tabs

- The quality is the best, adhesive ability is the strongest; it can be used repeatedly; 6 size and shape is available.
- Features:
A complete range of shapes and sizes are available to deal with all kinds of dents and it applies to all car body types.

[Glue Gun] Instruction

1. There are 2 types of glue guns, one is a vehicle glue gun, and the other is a 220V glue gun. The difference is the connector. The connector of the vehicle glue gun can directly connect with the car, while that of the 220V glue gun cannot.
2. The voltage of the vehicle glue gun is 12V, you can directly insert it into cigarette lighter, insert the glue stick, and then turn on the switch to start. Wait for 2-3 minutes till the glue stick melt and the temperature inside can reach to 160°C.
3. The 220V glue gun needs to be connected with power supply, insert the glue stick and then turn on the switch to start.

Features:

The 12V vehicle glue gun is our independent design. It is durable. The appearance is elegant and nozzle is bronze. The glue stick can melt fast. The power line is 2 meters long which is 0.5 meters longer than ordinary wires.

Q&A

Q: Which dent can be repaired and which cannot?

A: The smooth and hail dent can be 100% repaired, and the angular part needs more patience with different tools. The tiny dent which is hit by sharp object is difficult to repair. If the part with tiny dent can be removed or the back side of the dent can be contacted directly, you can directly deal with it with dent tester-LED line board or ordinary line board, tap down pen and tap down hammer. Remember never use an iron hammer or other hard objects to repair, because the paint will be damaged.

Q: To what degree can the tool reach?

A: This repair tool can repair 70%-80% dents. The smooth and hail dent can be well repaired. The angular dent, line dent and dent caused by sharp objects are difficult to repair. But you can still repair it by knocking the around part of the dent with a rubber hammer first. But it doesn't work if the paint has been damaged.

Q: Is the operation easy?

A: It is very easy. Even a beginner without any experience can handle as long as he or she read and watch our image-text and video tutorial carefully.

Q: If the glue doesn't work well, the viscosity is not enough, how to solve it?

A: 1. The glue works better in a sunny day and in the temperature of 20°C-28°C.
2. The viscosity of the glue is influenced by the humidity and temperature. Generally, the hot melt glue will dry within 2-5 minutes in summer and 1-3 minutes in a cold day. It depends on actual situation, sometimes 20 seconds is enough.
3. If the tab is off in the process of operating, it may be because the amount of glue is not enough or the temperature of car body is too high or your operation is not correct. The problem will be gone if you apply more glue, turn off the car engine, and then repeatedly operate.

Warm tips:

If the glue becomes fragile in an extremely cold day, you can apply hot water on the dent first, and then apply the glue.

Attention:

1. Glue sticks or repair tools bought from some local stores may fail to do the job as expected. They can't guarantee a good repair effect and may damage the paint. Our tools and glue sticks are professionally designed and applied to car body with years of practical experience. The paint won't be damaged and the repair effect is pretty good if you operate correctly.
2. If the paint of your car is not original, we suggest you not to buy our tools as it may damage the paint.

Notes :

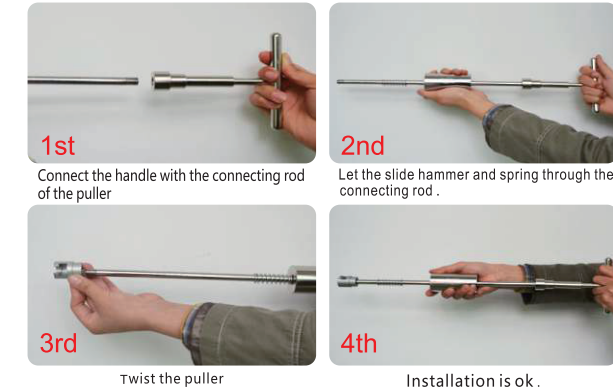
If the product you received has quality problems or it is broken when you received or you find a shortage in number, please do not hesitate to tell us via photos or e-mails, we will reply you in time. Please read the instruction carefully before you use our product, and according to the instruction to operate it. If there is any question please feel free to contact us, we will arrange our technical staff to help you. Please give us a reasonable and fair feedback if you think our product is practical. It is really helpful to other person when they want to buy this product. You can not use the vehicle glue gun when there is dent on the hood need to repair, because the vehicle glue gun needs to start the car to charge it, and this action will cause the hood gets hot, if the hood gets hot, the glue will be soft, and if the glue was soft, the viscosity will be weak, but except the place where its weather is extremely cold.

[how to operate the slide hammer dent puller]

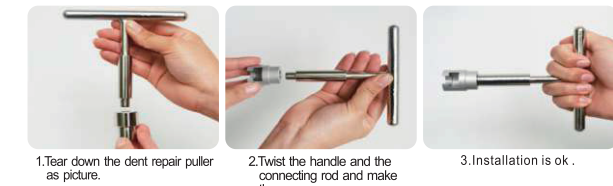


Prepare the tools
You had better to clean the dent with alcohol and rag before repair.

[The assembly process for slide hammer dent puller]



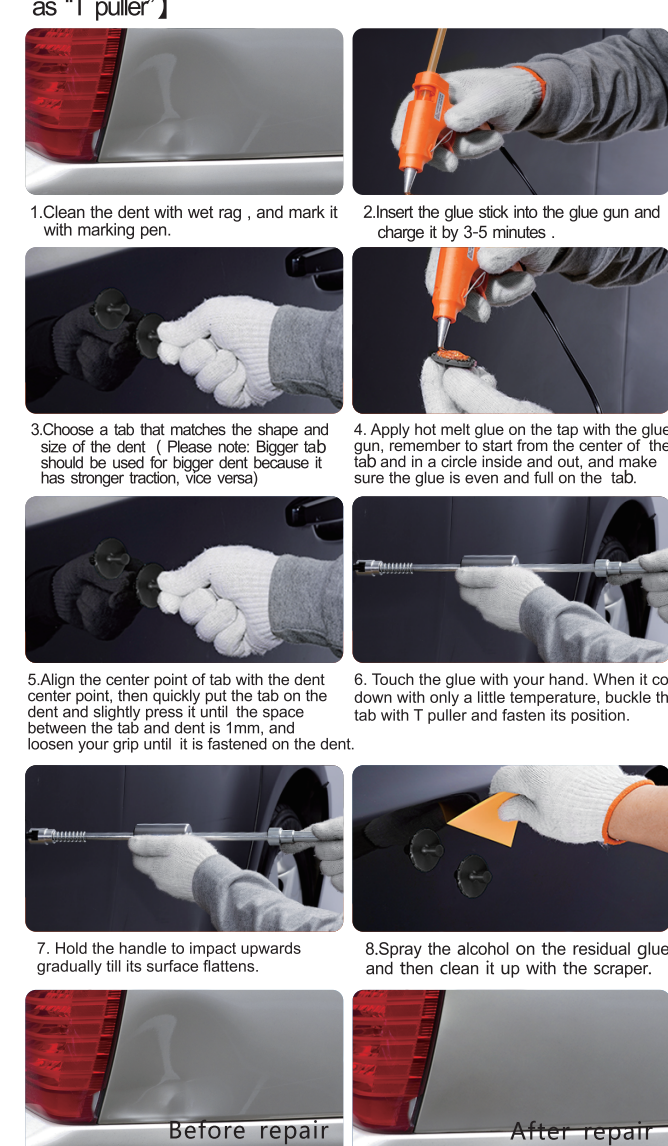
[The assembly process for short T]



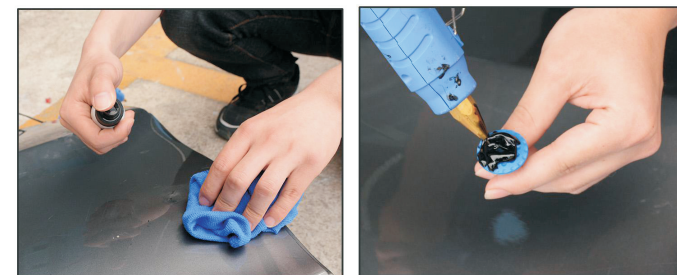
[The clean process for Glue Stick]



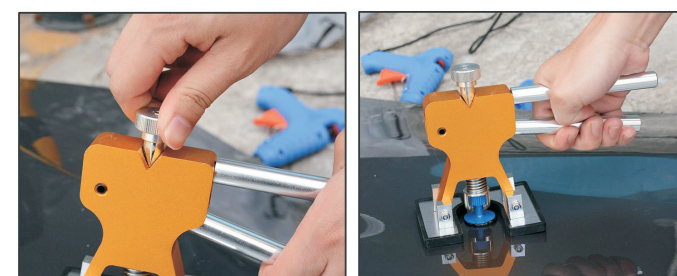
[Remark: slide hammer dent puller hereinafter referred to as "T puller"]



Kindly reminder:
If it is still unrepaired after above steps, you can repeat the steps several times till it is well repaired.
If the dent is repaired, but there's a bump on it, you can do as following steps:
1. Press the bump with your thumb continuously till it flattens.
2. If fail after the first step, you can use a tap down pen and aim at the bump, then knock it slightly with a rubber hammer. You can repeat till successful (Please do not knock with too much force).



1. Clean the surface of the depression
2. Heat the glue stick with a glue gun and apply it to the puller tabs



5. Adjust the height of the pull head to fit the puller tabs
6. Pull the tabs slowly



4. Place the dent lifter
3. Attach the puller tabs to the depression, wait about 2 minutes



Product List

Model&Picture	XPT9008	XPT9009	XPT9010	XPT9011	XPT9012	XPT9013	XPT9014	XPT9016	XPT9017	XPT9018
T-Shaped Puller										
Cloth Bag										
Chain										
Ring										
SHook										
Crowbar										
Crowbar										
Crowbar										
Crowbar										
Crowbar										
Crowbar										
Red wedge										
Red straight shovel										
Slide Hammer										
Repair Hammer										
Bridge Dent Puller										
Golden Dent Puller										
Glue Gun										
Glue Stick										
Plastic Tab										
Groove of Puller Line										
Spray Bottle										
Cloth										
Cloth										
Tool Carrying Bag										
Tool Bag										
Tap-down Pen										
Hammer										
Tip of Tap-down Pen										
Rubber sleeve										
Scraper										
Scraper										
Glove										
Reflective Board										

Technical Support and E-Warranty Certificate
www.vevor.com/support
Made In China

This is the original instruction, please read all manual instructions carefully before operating. VEVOR reserves a clear interpretation of our user manual. The appearance of the product shall be subject to the product you received. Please forgive us that we won't inform you again if there are any technology or software updates on our product.

IMPORTANT SAFEGUARDS



Save these instructions. Read all precautions and instructions. Rezhgad the entire Important Safety Information section at the beginning of this document including all text under subheadings therein before set up or use of this product.



Read and understand this entire manual before assembling, installing, operating, or servicing this product. Failure to follow these warnings and instructions can cause death, personal injury or damage to valuable property.

1. KEEP WORK AREA CLEAN AND DRY.

Cluttered, damp or wet work areas invite injuries.

2. KEEP CHILDREN AWAY FROM WORK AREA.

This product is not a toy. Do not allow children to use or near this product.

3. STORE IDLE EQUIPMENT.

When not in use, tools and equipment should be stored in a dry location to inhibit rust. Always lock up tools and equipment and keep them out of reach of children.

4. DO NOT USE THIS PRODUCT IF UNDER THE INFLUENCE OF ALCOHOL OR DRUGS.

Read warning labels on prescriptions to determine if your judgment or reflexes are impaired while taking drugs. If there is any doubt, do not attempt to use this product.

5. OPERATION SAFELY.

a. Wear ANSI-approved safety goggles and heavy-duty work gloves during use.

b. Non-skid footwear or safety shoes should be used when working with this product. Do not wear loose clothing or jewelry as they can become caught in moving parts. Wear a protective hair covering to prevent long hair from becoming caught in moving parts. If wearing a long-sleeve shirt, roll sleeves up above elbows.

6. DO NOT OVERREACH.

Keep proper footing and balance at all times to prevent tripping, falling, back injury, etc.

7. STAY ALERT.

Watch what you are doing at all times. Use common sense. Do not use this product when you are tired or distracted from the job at hand.

8. CHECK FOR DAMAGED PARTS.

Before using this product, carefully check that it will operate properly and perform its intended function. Check for damaged parts and any other conditions that may affect the operation of this product. Replace or repair damaged or worn parts immediately.

9. REPLACEMENT PARTS AND ACCESSORIES.

When servicing, use only identical replacement parts. Only use accessories intended for this product. Approved accessories are available from distributor.

10. MAINTAIN THIS PRODUCT WITH CARE.

Keep this tool clean and dry, and keep saw blades clean and sharp for better and safer performance.

11. MAINTENANCE:

For your safety, service and maintenance should be performed regularly by a qualified technician.

12. USE THE RIGHT PRODUCT FOR THE RIGHT JOB.

a. Use as intended only.

b. There are certain applications for which this product was designed. Do not use small equipment, tools or attachments to do the work of larger industrial equipment, tools or attachments. Do not use this product for a purpose for which it was not intended

13. Safety Instructions of Hot Melt Glue Gun

When using your Hot Melt Glue Gun, basic safety precautions should always be followed:

a. Read all instructions.

b. Check that the voltage indicated on the data plate corresponds with that of the local network before connecting the appliance to the mains power supply.

c. Do not leave the appliance unattended whilst connected to the mains power supply.

d. Do not immerse the appliance in water or any other liquids.

It is imperative to unplug the power cord after the appliance has been used, before it is cleaned and whilst being repaired.

e. Close supervision is required when using this appliance near children.

f. Never leave the appliance within reach of children.

g. Repairs to electrical appliances should only be performed by a qualified electrician. Improper repairs may place the user at serious risk.

h. This appliance is intended for household use only and should not be used for commercial purposes.

i. Do not operate the appliance with a damaged plug or cord, after a malfunction, or after being dropped or damaged in any way.

j. Do not use the appliance for anything other than its intended use.

k. Do not touch hot surfaces, use handle or knobs when working with the unit.

l. Keep the appliance and its cord out of reach of children less than 8 years. This appliance is not intended for use by persons (including children) with reduced physical, sensory or mental capabilities, or lack of experience and knowledge, unless they have been given supervision or instruction concerning use of the appliance by a person responsible for their safety. Children should be supervised to ensure that they do not play with the appliance.

m. If the supply cord is damaged, it must be replaced by the manufacturer, its service agent or similarly qualified persons in order to avoid a hazard.



Correct Disposal of Hot Melt Glue Gun:

This product is subject to the provision of European Directive 2012/19/EC. The symbol showing a wheeled bin crossed through indicates that the product requires separate refuse collection in the European Union. This applies to the product and all accessories marked with this symbol. Products marked as such may not be discarded with normal domestic waste, but must be taken to a collection point for recycling electrical and electronic devices

Address: Baoshanqu Shuangchenglu 803long 11hao 1602A-1609shi
Shanghai

Imported to AUS: SIHAO PTY LTD. 1 ROKEVA STREET EASTWOOD NSW
2122 Australia

Imported to USA: Sanven Technology Ltd. Suite 250, 9166 Anaheim Place,
Rancho Cucamonga, CA 91730



Pooledas Group Ltd
Unit 5 Albert Edward House, The Pavilions
Preston, United Kingdom



SHUNSHUN GmbH
Römeräcker 9 Z2021, 76351 Linkenheim-
Hochstetten, Germany

Made In China

VEVOR[®]

TOUGH TOOLS, HALF PRICE

Technical Support and E-Warranty Certificate
www.vevor.com/support

VEVOR[®]

TOUGH TOOLS, HALF PRICE

Technical Support and E-Warranty Certificate
www.vevor.com/support

Dent Repair Tool Kit

We continue to be committed to provide you tools with competitive price.
"Save Half", "Half Price" or any other similar expressions used by us only represents an estimate of savings you might benefit from buying certain tools with us compared to the major top brands and does not necessarily mean to cover all categories of tools offered by us. You are kindly reminded to verify carefully when you are placing an order with us if you are actually saving half in comparison with the top major brands.

[Dent Repair Puller] Instruction

1. Find the dent and clean it with a rag and alcohol.
2. Observe the shape and size of the dent, estimate where to pull the dent out, and mark it with a marking pen.
3. Then clean the glue stick with alcohol to remove the grease on its surface.
4. Insert the glue stick into the glue gun and connect the gun to the power supply, then heat it for about 2-3 minutes till the hot melt glue starts to spill out from the gun.
5. Choose a tab that matches the shape and size of the dent, apply hot melt glue on the tab with the glue gun, remember to start from the center of the tab and in a circle inside and out, and make sure the glue is even and full on the tab. (Please note: Bigger tab should be used for bigger dent because it has stronger traction, vice versa)
6. Align the center point of tab with the dent center point, then quickly put the tab on the dent and slightly press it. (Wait 3-5 minutes till it cools down with only a little temperature when it has strongest viscosity.)
7. Buckle the puller till it is fastened, hold the handle of the puller, impact upwards, gradually increase the force, repeat several times till the surface of the dent flattens or slightly bulges (do not impact too fiercely to avoid the tab off the car body)
8. If the center of some small dents is deeper than around, please use the rubber hammer to tap on the around part, that will make the dent more smooth to process.
9. After repair, spray alcohol on the part covered by glue and remove it with a scraper.
10. Check the result; if not ideal, repeat the above steps till you get what you want.

[Glue sticks] Instruction

Select correct glue sticks:

1. Transparent glue stick: For Japanese cars which have thin paint. Used for all natural temperature.
2. Yellow glue stick: For European and American cars which have thick paint. And it is a better choice to deal with small dents.
3. Black glue stick: For all cars. And the effect is better in the temperature of 20°C-28°C.

[Dent Repair Lifter] Instruction

1. Find the dent and clean it with a rag and alcohol.
2. Observe the shape and size of the dent, estimate where to pull the dent out, and mark it with a marking pen.
3. Then clean the glue stick with alcohol to remove the grease on its surface.
4. Insert the glue stick into the glue gun and connect the gun to the power supply, then heat it about for 2-3 minutes till the hot melt glue starts to spill out from the gun.
5. Choose a tab that matches the shape and size of the dent; apply hot melt glue on the tab with the glue gun, remember to start from the center of the tab and in a circle inside and out, and make sure the glue is even and full on the tab. (Please note: Bigger tab should be used for bigger dent because it has stronger traction, vice versa)
6. Align the center point of tab with the dent center point, and then quickly put the tab on the dent and slightly press it. (Wait 3-5 minutes till it cools down with only a little temperature when it has strongest viscosity.)
7. Buckle the lifter till it is fastened, hold the handle of the lifter, gradually increase the force, repeat several times till the surface of the dent flattens or slightly bulges. Deal with this slowly and carefully.
8. If the center of some small dents is deeper than around, please use the rubber hammer to tap on the around part that will make the dent more smooth to process.

[Dent Repair Bridge] Instruction

1. Find the dent and clean it with a rag and alcohol.
2. Observe the shape and size of the dent, estimate where to pull the dent out, and mark it with a marking pen.
3. Then clean the glue stick with alcohol to remove the grease on its surface.
4. Insert the glue stick into the glue gun and connect the gun to the power supply, then heat it about for 2-3 minutes till the hot melt glue starts to spill out from the gun.
5. Choose a tab that matches the shape and size of the dent; apply hot melt glue on the tab with the glue gun, remember to start from the center of the tab and in a circle inside and out, and make sure the glue is even and full on the tab. (Please note: Bigger tab should be used for bigger dent because it has stronger traction, vice versa)
6. Align the center point of tab with the dent center point, then quickly put the tab on the dent and slightly press it. (Wait 3-5 minutes till it cools down with only a little temperature when it has strongest viscosity.)
7. Buckle the nut, screw it till the surface of the dent flattens or slightly bulges. Deal with this slowly and carefully.
8. If the center of some small dents is deeper than around, please use the rubber hammer to tap on the around part that will make the dent more smooth to process.
9. After repair, spray alcohol on the part covered by glue and remove it with a scraper.
10. Check the result; if not ideal, repeat the above steps till you get what you want.

***Notice:**

1. Do not use a car charge glue gun if the dent is on the engine hood. Because you need to start the car, it will cause a high temperature, which will influence the glue stick's effect.
2. Do not repair under the blating sun because the high temperature of the car body will influence the effect of the glue stick.
3. When applying the glue, remember to start from the center of the tab and in a circle inside and out, and make sure the glue is even and full on the tab.

[Tabs] Instruction

There are 2 kinds of tabs.

1. Plastic tabs

- 1). To dissolve the attached impurity, the plastic tabs should be soaked for 3 hours with alcohol before use.
- 2). Heat the glue sticks with the glue gun, and apply hot melt glue on the tab evenly with proper amount depending on its viscosity and car body condition.
- 3). Put the tab with glue on the dent, slightly press it. Do not press fiercely to ensure a certain thickness of glue.
- 4). Choose the right tabs though observing the shape and size of the dent. Choose thin tabs for cars with soft body and thin paint and thick tabs for cars with hard body and thick paint.

2. Metal tabs

The quality is the best, adhesive ability is the strongest; it can be used repeatedly; 6 size and shape is available.

Features:
A complete range of shapes and sizes are available to deal with all kinds of dents and it applies to all car body types.

[Glue Gun] Instruction

1. There are 2 types of glue guns, one is a vehicle glue gun, and the other is a 220V glue gun. The difference is the connector. The connector of the vehicle glue gun can directly connect with the car, while that of the 220V glue gun cannot.
2. The voltage of the vehicle glue gun is 12V; you can directly insert it into cigarette lighter, insert the glue stick, and then turn on the switch to start. Wait for 2-3 minutes till the glue stick melt and the temperature inside can reach to 160°C.
3. The 220V glue gun needs to be connected with power supply, insert the glue stick and then turn on the switch to start.

Features:
The 12V vehicle glue gun is our independent design. It is durable. The appearance is elegant and nozzle is bronze. The glue stick can melt fast. The power line is 2 meters long which is 0.5 meters longer than ordinary wires.

Q&A

Q: Which dent can be repaired and which cannot?
A: The smooth and half dent can be 100% repaired, and the angular part needs more patience with different tools. The tiny dent which is hit by sharp object is difficult to repair. If the part with tiny dent can be removed or the back side of the dent can be contacted directly, you can directly deal with it with dent tester-LED line board or ordinary line board, tap down pen and tap down hammer. Remember never use a iron hammer or other hard objects to repair, because the paint will be damaged.

Q: To what degree can the tool reach?
A: This repair tool can repair 70%-80% dents. The smooth and half dent can be well repaired. The angular dent, line dent and dent caused by sharp objects are difficult to repair. But you can still repair it by knocking the around part of the dent with a rubber hammer first. But it doesn't work if the paint has been damaged.

Q: Is the operation easy?
A: It is very easy. Even a beginner without any experience can handle as long as he or she read and watch our image-text and video tutorial carefully.

Q: If the glue doesn't work well, the viscosity is not enough, how to solve it?
A: 1. The glue works better in a sunny day and in the temperature of 20°C-28°C.
2. The viscosity of the glue is influenced by the humidity and temperature. Generally, the hot melt glue will dry within 2-5 minutes in summer and 1-3 minutes in a cold day. It depends on actual situation, sometimes 20 seconds is enough.

Q: If the tab is off in the process of operating, it may be because the amount of glue is not enough or the temperature of car body is too high or your operation is not correct. The problem will be gone if you apply more glue, turn off the car engine, and then repeatedly operate.

Warm tips:
If the glue becomes fragile in an extremely cold day, you can apply hot water on the dent first, and then apply the glue.

Attention:

1. Glue sticks or repair tools bought from some local stores may fail to do the job as expected. They can't guarantee a good repair effect and may damage the paint. Our tools and glue sticks are professionally designed and applied to car body with years of practical experience. The paint won't be damaged and the repair effect is pretty good if you operate correctly.
2. If the paint of your car is not original, we suggest you not to buy our tools as it may damage the paint.

Notes :

If the product you received has quality problems or it is broken when you received or you find a shortage in number, please do not hesitate to tell us via photos or e-mails, we will reply you in time. Please read the instruction carefully before you use our product, and according to the instruction to operate it. If there is any question please feel free to contact us, we will arrange our technical staff to help you. Please give us a reasonable and fair feedback if you think our product is practical. It is really helpful to other person when they want to buy this product. You can not use the vehicle glue gun when there is dent on the hood need to repair, because the vehicle glue gun needs to start the car to charge it, and this action will cause the hood gets hot, if the hood get hot, the glue will be soft, and if the glue was soft, the viscosity will be weak, but except the place where its weather is extremely cold.

[how to operate the slide hammer dent puller]

Prepare the tools
You had better to clean the dent with alcohol and rag before repair.

[The assembly process for slide hammer dent puller]

- 1st: Connect the handle with the connecting rod of the puller.
- 2nd: Let the slide hammer and spring through the connecting rod.
- 3rd: Twist the puller.
- 4th: Installation is ok.

[The assembly process for short T]

1. Tear down the dent repair puller as picture.
2. Twist the handle and the connecting rod and make from one.
3. Installation is ok.

[The clean process for Glue Stick]

1. Prepare the glue stick and alcohol and rag.
2. Spray the alcohol on the glue stick.
3. Wipe the glue stick up with rag.
4. Insert the glue stick into the glue gun and prepare to charge it.

[Remark: slide hammer dent puller hereinafter referred to as "T puller"]

1. Clean the dent with wet rag, and mark it with marking pen.
2. Insert the glue stick into the glue gun and charge it by 3-5 minutes.
3. Choose a tab that matches the shape and size of the dent. (Please note: Bigger tab should be used for bigger dent because it has stronger traction, vice versa)
4. Apply hot melt glue on the top with the glue gun, remember to start from the center of the tab and in a circle inside and out, and make sure the glue is even and full on the tab.
5. Align the center point of tab with the dent center point, then quickly put the tab on the dent and slightly press it. (Wait 3-5 minutes till it cools down with only a little temperature when it has strongest viscosity.)
6. Touch the glue with your hand. When it cools down with only a little temperature, buckle the tab with T puller and fasten its position.
7. Hold the handle to impact upwards gradually till its surface flattens.
8. Spray the alcohol on the residual glue, and then clean it up with the scraper.

Kindly reminder:
If it is still unrepaired after above steps, you can repeat the steps several times till it is well repaired.
If the dent is repaired, but there's a bump on it, you can do as following steps:
1. Press the bump with your thumb continuously till it flattens.
2. If fail after the first step, you can use a tap down pen and aim at the bump, then knock it slightly with a rubber hammer. You can repeat till successful. (Please do not knock with too much force).

1. Clean the surface of the depression
2. Heat the glue stick with a glue gun and apply it to the puller tabs
3. Adjust the height of the pull head to fit the puller tabs
4. Place the dent lifter
5. Attach the puller tabs to the depression, wait about 2 minutes
6. Pull the tabs slowly

2. Metal tabs

The quality is the best, adhesive ability is the strongest; it can be used repeatedly; 6 size and shape is available.

Features:
A complete range of shapes and sizes are available to deal with all kinds of dents and it applies to all car body types.

VEVOR[®]

TOUGH TOOLS, HALF PRICE

Product List

Modèle et photo	XPT9008	XPT9009	XPT9010	XPT9011	XPT9012	XPT9013	XPT9014	XPT9016	XPT9017	XPT9018
Extraitur en T								1		1
Sac en tissu									2	1
Chaine		1								2
Anneau		3								
Secoueur		3								
Pied de boche	5									
Pied de boche		10								
Pied de boche				21						
Pied de boche						10				
Pied de boche										10
Coin rouge								1		
Pelle droite rouge								1		
Marteau couffissant					1	1	1	1	1	1
Marteau de réparation								1	1	1
Extracteur de bosses de pont										
Extracteur de bosses doré					1	1	1	1	1	1
Pistolet à colle		1	1	1	1	1	1	1	1	1
Bâton de colle		12	12	20	12	12	10	10	15	
Languette en plastique		24	24	34	36	54	66	54		
Rainure de la ligne de traction					1	1	1	1	1	1
Fusoir polirobrotteur					1	1	1	1	1	1
Tissu					1	1			1	1
Tissu									1	
Sac de transport d'outils		2	2	2	2	2	2	2	2	2
Sac à outils	1	1	1	1	1	1	1	1	1	1
Stylo à enfonceur									5	5
Marteau		1			1	1	1	1	1	1
Pointe du stylo à enfonceur		1	1	1	1	1	1	1	1	1
Manchon en caoutchouc	8	1	8	8	8	8	8	8	8	8
Gratier			2	1				2	2	1
Gratier								1		
Gant	2	2	2	2	2	2	2	2	2	2
Panneau réfléchissant								1		1

Technical Support and E-Warranty Certificate
www.vevor.com/support
Made In China

Ceci est l'instruction originale, veuillez lire toutes les instructions du manuel attentivement avant d'utiliser. VEVOR se réserve une interprétation claire de nos manuel d'utilisation. L'apparence du produit sera soumise à la produit que vous avez reçu. Veuillez nous excuser, nous ne vous informerons plus si il y a des mises à jour technologiques ou logicielles sur notre produit.

MESURES DE SÉCURITÉ IMPORTANTES



Conservez ces instructions. Lisez toutes les précautions et instructions. Lisez toutes les informations importantes sur la sécurité section au début de ce document comprenant tout le texte sous les sous-titres qui y figurent avant la mise en place ou l'utilisation de ce

produit. Lisez et comprenez l'intégralité de ce manuel avant d'assembler, d'installer,

d'utiliser ou d'entretenir ce produit. Le non-respect de ces avertissements et les instructions peuvent entraîner la mort, des blessures corporelles ou des dommages à propriété de valeur.

1. GARDEZ LA ZONE DE TRAVAIL PROPRE ET SÈCHE.

Les zones de travail encombrées, humides ou mouillées favorisent les blessures.

2. GARDEZ LES ENFANTS LOIN DE LA ZONE DE TRAVAIL.

Ce produit n'est pas un jouet. Ne laissez pas les enfants utiliser ou s'approcher de ce produit.

3. STOCKER L'ÉQUIPEMENT INACTIF.

Lorsqu'ils ne sont pas utilisés, les outils et équipements doivent être stockés dans un endroit sec pour inhibe la rouille. Verrouillez toujours les outils et l'équipement et gardez-les hors de portée enfants.

4. N'UTILISEZ PAS CE PRODUIT SI VOUS ÊTES SOUS L'INFLUENCE DE ALCOOL OU DROGUES.

Lisez les avertissements figurant sur les ordonnances pour déterminer si votre jugement ou vos réflexes sont efficaces. sont affaiblis par la prise de drogues. En cas de doute, n'essayez pas d'utiliser ce médicament produit.

5. FONCTIONNEMENT EN TOUTE SÉCURITÉ.

a. Portez des lunettes de sécurité homologuées ANSI et des gants de travail robustes

pendant l'utilisation.

b. Des chaussures antidérapantes ou des chaussures de sécurité doivent être utilisées lors de l'utilisation de ce produit.

produit. Ne portez pas de vêtements amples ni de bijoux car ils peuvent se coincer dans

pièces mobiles. Portez un couvre-cheveux protecteur pour éviter que les cheveux longs ne

se coincer dans des pièces mobiles. Si vous portez une chemise à manches longues, retroussez les manches au dessus des coudes.

6. NE PAS TROP ALLER AU-DESSUS.

Gardez toujours une bonne position et un bon équilibre pour éviter de trébucher, de tomber ou de reculer.

blessure, etc.

7. RESTEZ VIGILANT.

Faites attention à ce que vous faites à tout moment. Faites preuve de bon sens. N'utilisez pas cela

produit lorsque vous êtes fatigué ou distrait par la tâche à accomplir.

8. VÉRIFIEZ QU'IL N'Y A PAS DE PIÈCES ENDOMMAGÉES.

Avant d'utiliser ce produit, vérifiez soigneusement qu'il fonctionnera correctement et

remplir sa fonction prévue. Vérifiez les pièces endommagées et tout autre

conditions qui peuvent affecter le fonctionnement de ce produit. Remplacez ou réparez

les pièces endommagées ou usées immédiatement.

9. PIÈCES DE RECHANGE ET ACCESSOIRES.

Lors de l'entretien, n'utilisez que des pièces de rechange identiques. N'utilisez que des accessoires

destiné à ce produit. Des accessoires approuvés sont disponibles auprès du distributeur.

10. ENTRETENEZ CE PRODUIT AVEC SOIN.

Gardez cet outil propre et sec, et gardez les lames de scie propres et aiguisées pendant

des performances meilleures et plus sûres.

11. ENTRETIEN :

Pour votre sécurité, l'entretien et la maintenance doivent être effectués régulièrement

par un technicien qualifié.

12. UTILISEZ LE BON PRODUIT POUR LE BON TRAVAIL.

- a. À utiliser uniquement comme prévu.
- b. Ce produit a été conçu pour certaines applications. Ne l'utilisez pas utiliser de petits équipements, outils ou accessoires pour effectuer le travail d'une industrie plus grande équipements, outils ou accessoires. N'utilisez pas ce produit à des fins ce qui n'était pas prévu

13. Consignes de sécurité du pistolet à colle thermofusible

Lorsque vous utilisez votre pistolet à colle thermofusible, des précautions de sécurité de base doivent toujours être respectées. suivi:

- a. Lisez toutes les instructions.
- b. Vérifiez que la tension indiquée sur la plaque signalétique correspond à celle de l'appareil. réseau local avant de connecter l'appareil au secteur. c. Ne laissez pas l'appareil sans surveillance lorsqu'il est connecté au secteur
- d. Ne plongez pas l'appareil dans l'eau ou tout autre liquide. Il est impératif de débrancher le cordon d'alimentation après utilisation de l'appareil, avant de le nettoyer et pendant toute réparation. e. Une surveillance étroite est requise lors de l'utilisation de cet appareil à proximité d'enfants.
- f. Ne laissez jamais l'appareil à la portée des enfants. g. Les réparations sur les appareils électriques ne doivent être effectuées que par un technicien qualifié. électricien. Des réparations incorrectes peuvent mettre l'utilisateur en danger. h. Cet appareil est destiné à un usage domestique uniquement et ne doit pas être utilisé pour à des fins commerciales.
- i. N'utilisez pas l'appareil si sa fiche ou son cordon d'alimentation est endommagé, après un dysfonctionnement, une chute ou un dommage quelconque.
- j. N'utilisez pas l'appareil à d'autres fins que celles pour lesquelles il est prévu. k. Ne touchez pas les surfaces chaudes et n'utilisez pas les poignées ou les boutons lorsque vous travaillez avec l'appareil.
- l. Gardez l'appareil et son cordon hors de portée des enfants de moins de 8 ans. L'appareil n'est pas destiné à être utilisé par des personnes (y compris des enfants) à mobilité réduite. capacités physiques, sensorielles ou mentales, ou un manque d'expérience et de connaissances, à moins qu'ils n'aient reçu une supervision ou des instructions concernant l'utilisation de l'appareil. appareil par une personne responsable de leur sécurité. Les enfants doivent être surveillés
- m. Si le cordon d'alimentation est endommagé, il doit être remplacé par le fabricant, son agent de service ou des personnes qualifiées de manière similaire afin d'éviter tout danger.



Élimination correcte du pistolet à colle thermofusible :

Ce produit est soumis aux dispositions de la directive européenne 2012/19/CE. Le symbole représentant une poubelle à roulettes barrée indique que le produit nécessite une collecte séparée des déchets dans l'Union européenne. Cela s'applique au produit et à tous les accessoires marqués de ce symbole. Les produits marqués comme tels ne peuvent pas être jetés avec les déchets ménagers normaux, mais doivent être déposés dans un point de collecte pour le recyclage des appareils

électriques et électroniques

Adresse : Baoshanqu Shuangchenglu 803long 11hao 1602A-1609shi Shanghai Importé en AUS :

SIHAO PTY LTD. 1 ROKEVA STREET EASTWOOD NSW 2122 Australie Importé aux USA : Sanven Technology

Ltd. Suite 250, 9166 Anaheim Place, Rancho Cucamonga, CA 91730



Groupe Pooledas Ltd
Unité 5 Maison Albert Edward, Les Pavillons
Preston, Royaume-Uni



SHUNSHUN GmbH
Römeräcker 9 Z2021, 76351 Linkenheim-
Hochstetten, Allemagne

Fabriqué en Chine

VEVOR[®]
TOUGH TOOLS, HALF PRICE

Assistance technique et certificat de garantie électronique
www.vevor.com/support

VEVOR[®]

TOUGH TOOLS, HALF PRICE

Technical Support and E-Warranty Certificate
www.vevor.com/support

Dent Repair Tool Kit

We continue to be committed to provide you tools with competitive price.
"Save Half", "Half Price" or any other similar expressions used by us only represents an estimate of savings you might benefit from buying certain tools with us compared to the major top brands and does not necessarily mean to cover all categories of tools offered by us. You are kindly reminded to verify carefully when you are placing an order with us if you are actually saving half in comparison with the top major brands.

[Dent Repair Puller] Instruction

1. Find the dent and clean it with a rag and alcohol.
2. Observe the shape and size of the dent, estimate where to pull the dent out, and mark it with a marking pen.
3. Then clean the glue stick with alcohol to remove the grease on its surface.
4. Insert the glue stick into the glue gun and connect the gun to the power supply, then heat it for about 2-3 minutes till the hot melt glue starts to spill out from the gun.
5. Choose a tab that matches the shape and size of the dent, apply hot melt glue on the tab with the glue gun, remember to start from the center of the tabland in a circle inside and out, and make sure the glue is even and full on the tab. (Please note: Bigger tab should be used for bigger dent because it has stronger traction, vice versa)
6. Align the center point of tab with the dent center point, then quickly put the tab on the dent and slightly press it. (Wait 3-5 minutes till it cools down with only a little temperature when it has strongest viscosity.)
7. Buckle the puller till it is fastened, hold the handle of the puller, impact upwards, gradually increase the force, repeat several times till the surface of the dent flattens or slightly bulges (do not impact too ferociously to avoid the tab off the car body)
8. If the center of some small dents is deeper than around, please use the rubber hammer to tap on the around part, that will make the dent more smooth to process.
9. After repair, spray alcohol on the part covered by glue and remove it with a scraper.
10. Check the result; if not ideal, repeat the above steps till you get what you want.

[Glue sticks] Instruction

Select correct glue sticks:

1. Transparent glue stick: For Japanese cars which have thin paint. Used for all natural temperature.
2. Yellow glue stick: For European and American cars which have thick paint. And it is a better choice to deal with small dents.
3. Black glue stick: For all cars. And the effect is better in the temperature of 20°C-28°C.

[Dent Repair Lifter] Instruction

1. Find the dent and clean it with a rag and alcohol.
2. Observe the shape and size of the dent, estimate where to pull the dent out, and mark it with a marking pen.
3. Then clean the glue stick with alcohol to remove the grease on its surface.
4. Insert the glue stick into the glue gun and connect the gun to the power supply, then heat it about for 2-3 minutes till the hot melt glue starts to spill out from the gun.
5. Choose a tab that matches the shape and size of the dent; apply hot melt glue on the tab with the glue gun, remember to start from the center of the tab and in a circle inside and out, and make sure the glue is even and full on the tab. (Please note: Bigger tab should be used for bigger dent because it has stronger traction, vice versa)
6. Align the center point of tab with the dent center point, and then quickly put the tab on the dent and slightly press it. (Wait 3-5 minutes till it cools down with only a little temperature when it has strongest viscosity.)
7. Buckle the lifter till it is fastened, hold the handle of the lifter, gradually increase the force, repeat several times till the surface of the dent flattens or slightly bulges. Deal with this slowly and carefully.
8. If the center of some small dents is deeper than around, please use the rubber hammer to tap on the around part that will make the dent more smooth to process.

[Dent Repair Bridge] Instruction

1. Find the dent and clean it with a rag and alcohol.
2. Observe the shape and size of the dent, estimate where to pull the dent out, and mark it with a marking pen.
3. Then clean the glue stick with alcohol to remove the grease on its surface.
4. Insert the glue stick into the glue gun and connect the gun to the power supply, then heat it about for 2-3 minutes till the hot melt glue starts to spill out from the gun.
5. Choose a tab that matches the shape and size of the dent; apply hot melt glue on the tab with the glue gun, remember to start from the center of the tab and in a circle inside and out, and make sure the glue is even and full on the tab. (Please note: Bigger tab should be used for bigger dent because it has stronger traction, vice versa)
6. Align the center point of tab with the dent center point, then quickly put the tab on the dent and slightly press it. (Wait 3-5 minutes till it cools down with only a little temperature when it has strongest viscosity.)
7. Buckle the nut, screw it till the surface of the dent flattens or slightly bulges. Deal with this slowly and carefully.
8. If the center of some small dents is deeper than around, please use the rubber hammer to tap on the around part that will make the dent more smooth to process.
9. After repair, spray alcohol on the part covered by glue and remove it with a scraper.
10. Check the result; if not ideal, repeat the above steps till you get what you want.

***Notice:**

1. Do not use a car charge glue gun if the dent is on the engine hood. Because you need to start the car, it will cause a high temperature, which will influence the glue stick's effect.
2. Do not repair under the blasing sun because the high temperature of the car body will influence the effect of the glue stick.
3. When applying the glue, remember to start from the center of the tab and in a circle inside and out, and make sure the glue is even and full on the tab.

[Tabs] Instruction

There are 2 kinds of tabs.

1. Plastic tabs

- 1). To dissolve the attached impurity, the plastic tabs should be soaked for 3 hours with alcohol before use.
- 2). Heat the glue sticks with the glue gun, and apply hot melt glue on the tab evenly with proper amount depending on its viscosity and car body condition.
- 3). Put the tab with glue on the dent, slightly press it. Do not press ferociously to ensure a certain thickness of glue.
- 4). Choose the right tabs though observing the shape and size of the dent. Choose thin tabs for cars with soft body and thin paint and thick tabs for cars with hard body and thick paint.

2. Metal tabs

The quality is the best, adhesive ability is the strongest; it can be used repeatedly; 6 size and shape is available.

Features:
A complete range of shapes and sizes are available to deal with all kinds of dents and it applies to all car body types.

[Glue Gun] Instruction

1. There are 2 types of glue guns, one is a vehicle glue gun, and the other is a 220V glue gun. The difference is the connector. The connector of the vehicle glue gun can directly connect with the car, while that of the 220V glue gun cannot.
2. The voltage of the vehicle glue gun is 12V; you can directly insert it into cigarette lighter, insert the glue stick, and then turn on the switch to start. Wait for 2-3 minutes till the glue stick melt and the temperature inside can reach to 160°C.
3. The 220V glue gun needs to be connected with power supply, insert the glue stick and then turn on the switch to start.

Features:
The 12V vehicle glue gun is our independent design. It is durable. The appearance is elegant and nozzle is bronze. The glue stick can melt fast. The power line is 2 meters long which is 0.5 meters longer than ordinary wires.

Q&A

Q: Which dent can be repaired and which cannot?
A: The smooth and half dent can be 100% repaired, and the angular part needs more patience with different tools. The tiny dent which is hit by sharp object is difficult to repair. If the part with tiny dent can be removed or the back side of the dent can be contacted directly, you can directly deal with it with dent tester-LED line board or ordinary line board, tap down pen and tap down hammer. Remember never use a iron hammer or other hard objects to repair, because the paint will be damaged.

Q: To what degree can the tool reach?
A: This repair tool can repair 70%-80% dents. The smooth and half dent can be well repaired. The angular dent, line dent and dent caused by sharp objects are difficult to repair. But you can still repair it by knocking the around part of the dent with a rubber hammer first. But it doesn't work if the paint has been damaged.

Q: Is the operation easy?
A: It is very easy. Even a beginner without any experience can handle as long as he or she read and watch our image-text and video tutorial carefully.

Q: If the glue doesn't work well, the viscosity is not enough, how to solve it?
A: 1. The glue works better in a sunny day and in the temperature of 20°C-28°C.
2. The viscosity of the glue is influenced by the humidity and temperature. Generally, the hot melt glue will dry within 2-5 minutes in summer and 1-3 minutes in a cold day. It depends on actual situation, sometimes 20 seconds is enough.
3. If the tab is off in the process of operating, it may be because the amount of glue is not enough or the temperature of car body is too high or your operation is not correct. The problem will be gone if you apply more glue, turn off the car engine, and then repeatedly operate.

Warm tips:
If the glue becomes fragile in an extremely cold day, you can apply hot water on the dent first, and then apply the glue.

Attention:

1. Glue sticks or repair tools bought from some local stores may fail to do the job as expected. They can't guarantee a good repair effect and may damage the paint. Our tools and glue sticks are professionally designed and applied to car body with years of practical experience. The paint won't be damaged and the repair effect is pretty good if you operate correctly.
2. If the paint of your car is not original, we suggest you not to buy our tools as it may damage the paint.

Notes :

If the product you received has quality problems or it is broken when you received or you find a shortage in number, please do not hesitate to tell us via photos or e-mails, we will reply you in time. Please read the instruction carefully before you use our product, and according to the instruction to operate it. If there is any question please feel free to contact us, we will arrange our technical staff to help you. Please give us a reasonable and fair feedback if you think our product is practical. It is really helpful to other person when they want to buy this product. You can not use the vehicle glue gun when there is dent on the hood need to repair, because the vehicle glue gun needs to start the car to charge it, and this action will cause the hood gets hot, if the hood get hot, the glue will be soft, and if the glue was soft, the viscosity will be weak, but except the place where its weather is extremely cold.

[how to operate the slide hammer dent puller]

Prepare the tools
You had better to clean the dent with alcohol and rag before repair.

[The assembly process for slide hammer dent puller]

- 1st: Connect the handle with the connecting rod of the puller.
- 2nd: Let the slide hammer and spring through the connecting rod.
- 3rd: Twist the puller.
- 4th: Installation is ok.

[The assembly process for short T]

1. Tear down the dent repair puller as picture.
2. Twist the handle and the connecting rod and make from one.
3. Installation is ok.

[The clean process for Glue Stick]

1. Prepare the glue stick and alcohol and rag.
2. Spray the alcohol on the glue stick.
3. Wipe the glue stick up with rag.
4. Insert the glue stick into the glue gun and prepare to charge it.

[Remark: slide hammer dent puller hereinafter referred to as "T puller"]

1. Clean the dent with wet rag, and mark it with marking pen.
2. Insert the glue stick into the glue gun and charge it by 3-5 minutes.
3. Choose a tab that matches the shape and size of the dent. (Please note: Bigger tab should be used for bigger dent because it has stronger traction, vice versa)
4. Apply hot melt glue on the top with the glue gun, remember to start from the center of the tab and in a circle inside and out, and make sure the glue is even and full on the tab.
5. Align the center point of tab with the dent center point, then quickly put the tab on the dent and slightly press it. (Wait 3-5 minutes till it cools down with only a little temperature when it has strongest viscosity.)
6. Touch the glue with your hand. When it cools down with only a little temperature, buckle the tab with T puller and fasten its position.
7. Hold the handle to impact upwards gradually till its surface flattens.
8. Spray the alcohol on the residual glue, and then clean it up with the scraper.

Kindly reminder:
If it is still unrepaired after above steps, you can repeat the steps several times till it is well repaired.
If the dent is repaired, but there's a bump on it, you can do as following steps:
1. Press the bump with your thumb continuously till it flattens.
2. If fail after the first step, you can use a tap down pen and aim at the bump, then knock it slightly with a rubber hammer. You can repeat till successful. (Please do not knock with too much force).

1. Clean the surface of the depression.
2. Heat the glue stick with a glue gun and apply it to the puller tabs.
3. Adjust the height of the pull head to fit the puller tabs.
4. Place the dent lifter.
5. Attach the puller tabs to the depression, wait about 2 minutes.
6. Pull the tabs slowly.
7. Attach the puller tabs to the depression, wait about 2 minutes.

VEVOR[®]

TOUGH TOOLS, HALF PRICE

Product List

Model & Bild	XPT9008	XPT9009	XPT9010	XPT9011	XPT9012	XPT9013	XPT9014	XPT9016	XPT9017	XPT9018
T-förmiger Abzieher										
Stoßboiler										
Kette		1								
Ring		3								
Schrauben		3								
Brecheisen	5									
Brecheisen		10								
Brecheisen			21							
Brecheisen				10						
Brecheisen									10	
Roter Keil										1
Rote gerade Schaufel										1
Olshammer					1	1	1	1	1	1
Reparaturhammer								1	1	1
Brücken-Dellenzieher										
Goldener Dellenzieher										
Herbklebeband					1	1	1	1	1	1
Klebestift					12	12	20	12	12	10
Kunststoffflasche					24	24	34	36	54	66
Nut der Abziehleine										
Sprühflasche					1	1			1	1
Tuch					1	1			1	1
Tuch										
Werkzeugtasche					2	2	2	2	2	2
Werkzeugtasche	1	1	1	1	1	1	1	1	1	1
Sitz zum Autörücken										
Hammer					1	1	1	1	1	1
Spitze des Abklopfstifts					1	1	1	1	1	1
Gumminmanschette	8	1			8	8	8	8	8	8
Schaber					2	1			2	1
Schaber										
Handbuch	2	2	2	2	2	2	2	2	2	2
Reflektorstift										

Technical Support and E-Warranty Certificate
www.vevor.com/support
Made In China

Dies ist die Originalanleitung. Bitte lesen Sie alle Anweisungen im Handbuch.
sorgfältig vor der Inbetriebnahme. VEVOR behält sich eine klare Auslegung unserer
Benutzerhandbuch. Das Erscheinungsbild des Produkts unterliegt den
Produkt, das Sie erhalten haben. Bitte haben Sie Verständnis, dass wir Sie nicht erneut informieren, wenn
es gibt Technologie- oder Software-Updates für unser Produkt.

WICHTIGE SICHERHEITSHINWEISE



Bewahren Sie diese Anleitung auf. Lesen Sie alle Vorsichtsmaßnahmen und Anweisungen. Lesen Sie die vollständigen wichtigen Sicherheitsinformationen Abschnitt am Anfang dieses Dokuments einschließlich des gesamten Textes unter den Unterüberschriften darin vor der Einrichtung oder Verwendung dieser

Produkt. Lesen und verstehen Sie dieses Handbuch vollständig, bevor Sie es zusammenbauen, installieren, Betrieb oder Wartung dieses Produkts. Die Nichtbeachtung dieser Warnungen und Anweisungen können zu Tod, Verletzungen oder Schäden am wertvolles Eigentum.

1. HALTEN SIE DEN ARBEITSBEREICH SAUBER UND TROCKEN.

Unordentliche, feuchte oder nasse Arbeitsbereiche führen zu Verletzungen.

2. HALTEN SIE KINDER VOM ARBEITSBEREICH FERN.

Dieses Produkt ist kein Spielzeug. Erlauben Sie Kindern nicht, das Produkt zu benutzen oder sich in seiner Nähe aufzuhalten.

3. Lagern Sie nicht genutzte Ausrüstung.

Wenn sie nicht verwendet werden, sollten Werkzeuge und Geräte an einem trockenen Ort aufbewahrt werden, um Rost zu verhindern. Werkzeuge und Geräte immer wegschließen und außerhalb der Reichweite von Kinder.

4. VERWENDEN SIE DIESES PRODUKT NICHT, WENN SIE UNTER DEM EINFLUSS VON ALKOHOL ODER DROGEN.

Lesen Sie die Warnhinweise auf den Rezepten, um festzustellen, ob Ihr Urteilsvermögen oder Ihre Reflexe sind bei Einnahme von Medikamenten beeinträchtigt. Wenn Sie Zweifel haben, versuchen Sie nicht, dieses Produkt.

5. SICHERER BETRIEB.

a. Tragen Sie eine ANSI-zugelassene Schutzbrille und strapazierfähige Arbeitshandschuhe

während des Gebrauchs.

b. Bei der Arbeit mit diesem Produkt sollten rutschfeste Schuhe oder Sicherheitsschuhe getragen werden.

Produkt. Tragen Sie keine weite Kleidung oder Schmuck, da diese sich im

beweglichen Teilen. Tragen Sie einen Haarschutz, um zu verhindern, dass lange Haare

in beweglichen Teilen hängen bleiben. Wenn Sie ein langärmeliges Hemd tragen, krempeln Sie die Ärmel hoch über den Ellbogen.

6. Übernehmen Sie sich nicht.

Achten Sie stets auf den richtigen Stand und das Gleichgewicht, um Stolpern, Stürze, Rücken

Verletzung usw.

7. BLEIBEN SIE WACHSAM.

Achten Sie immer darauf, was Sie tun. Benutzen Sie Ihren gesunden Menschenverstand. Verwenden Sie dieses

Produkt, wenn Sie müde sind oder von der anstehenden Arbeit abgelenkt sind.

8. ÜBERPRÜFEN SIE, OB TEILE BESCHÄDIGT SIND.

Überprüfen Sie vor der Verwendung dieses Produkts sorgfältig, ob es ordnungsgemäß funktioniert und

seine beabsichtigte Funktion erfüllen. Überprüfen Sie auf beschädigte Teile und andere

Bedingungen, die den Betrieb dieses Produkts beeinträchtigen können. Ersetzen oder reparieren

Beschädigte oder verschlissene Teile sofort austauschen.

9. ERSATZTEILE UND ZUBEHÖR.

Verwenden Sie bei Servicearbeiten nur identische Ersatzteile. Verwenden Sie nur Zubehör

für dieses Produkt vorgesehen. Zugelassenes Zubehör ist beim Händler erhältlich.

10. Pflegen Sie dieses Produkt sorgfältig.

Halten Sie das Werkzeug sauber und trocken und die Sägeblätter sauber und scharf für

bessere und sicherere Leistung.

11. WARTUNG:

Zu Ihrer Sicherheit sollten Service und Wartung regelmäßig durchgeführt werden

von einem qualifizierten Techniker.

12. VERWENDEN SIE DAS RICHTIGE PRODUKT FÜR DIE RICHTIGE AUFGABE.

a. Nur bestimmungsgemäß verwenden.

b. Es gibt bestimmte Anwendungen, für die dieses Produkt entwickelt wurde.

Verwenden Sie kleine Geräte, Werkzeuge oder Anbaugeräte, um die Arbeit größerer Industriebetriebe zu erledigen.

Geräte, Werkzeuge oder Zubehör. Verwenden Sie dieses Produkt nicht für Zwecke, für die was nicht beabsichtigt war

13. Sicherheitshinweise zur Heißklebepistole

Bei der Verwendung Ihrer Heißklebepistole sollten Sie immer grundlegende Sicherheitsvorkehrungen treffen gefolgt:

a. Lesen Sie alle Anweisungen. b.

Überprüfen Sie, ob die auf dem Typenschild angegebene Spannung mit der des

lokales Netzwerk, bevor Sie das Gerät an das Stromnetz anschließen. c. Lassen Sie das Gerät nicht

unbeaufsichtigt, während es an das Stromnetz angeschlossen ist

d.

Tauchen Sie das Gerät nicht in Wasser oder andere Flüssigkeiten.

Nach dem Gebrauch des Geräts, vor der Reinigung und während Reparaturen muss unbedingt der

Netzstecker gezogen werden. e. Bei der Verwendung des

Geräts in der Nähe von Kindern ist strenge Aufsicht erforderlich.

f. Lassen Sie das Gerät niemals in Reichweite von Kindern liegen. g.

Reparaturen an Elektrogeräten dürfen nur von qualifiziertem Fachpersonal durchgeführt werden.

Elektriker. Unsachgemäße Reparaturen können den Benutzer ernsthaft gefährden. h.

Dieses Gerät ist nur für den Hausgebrauch bestimmt und darf nicht für

kommerzielle Zwecke.

i. Betreiben Sie das Gerät nicht mit einem beschädigten Stecker oder Kabel, nach einer Fehlfunktion, nachdem es heruntergefallen ist oder auf sonstige Weise beschädigt wurde.

j. Verwenden Sie das Gerät ausschließlich für den vorgesehenen Zweck. k. Berühren Sie beim Arbeiten mit dem Gerät keine heißen Oberflächen und verwenden Sie keine Griffe oder Knöpfe.

l. Bewahren Sie das Gerät und sein Kabel außerhalb der Reichweite von Kindern unter 8 Jahren auf.

Das Gerät ist nicht für den Gebrauch durch Personen (einschließlich Kinder) mit eingeschränkter körperlichen, sensorischen oder geistigen Fähigkeiten oder mangelnder Erfahrung und Kenntnisse, es sei denn, sie wurden beaufsichtigt oder in die Benutzung des

Gerät von einer für ihre Sicherheit verantwortlichen Person benutzen. Kinder sollten beaufsichtigt werden

um sicherzustellen, dass sie nicht mit dem Gerät spielen. m. Wenn

das Netzkabel beschädigt ist, muss es vom Hersteller ersetzt werden,

Um Gefährdungen zu vermeiden, müssen Sie den Reparatordienst oder eine ähnlich qualifizierte Person hinzuziehen.



Richtige Entsorgung der Heißklebepistole:

Dieses Produkt unterliegt den Bestimmungen der europäischen Richtlinie 2012/19/EG. Das Symbol einer durchgestrichenen Mülltonne weist darauf hin, dass das Produkt in der Europäischen Union einer getrennten Müllentsorgung unterliegt. Dies gilt für das Produkt und alle mit diesem Symbol gekennzeichneten Zubehörteile. So gekennzeichnete Produkte dürfen nicht im normalen Hausmüll entsorgt werden, sondern müssen an einer

Sammelstelle für das Recycling von elektrischen und elektronischen Geräten abgegeben werden.

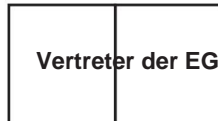
Adresse: Baoshanqu Shuangchenglu 803long 11hao 1602A-1609shi Shanghai **Importiert nach AUS:**

SIHAO PTY LTD. 1 ROKEVA STREETEASTWOOD NSW 2122 Australien **Importiert nach USA:**
Sanven Technology

Ltd. Suite 250, 9166 Anaheim Place, Rancho Cucamonga, CA 91730



Pooledas Group Ltd
Einheit 5 Albert Edward House, Die Pavillons
Preston, Vereinigtes Königreich



SHUNSHUN GmbH
Römeräcker 9 Z2021, 76351 Linkenheim-
Hochstetten, Germany

In China hergestellt



Technischer Support und E-Garantie-Zertifikat
www.vevor.com/support

VEVOR[®]

TOUGH TOOLS, HALF PRICE

Technical Support and E-Warranty Certificate
www.vevor.com/support

Dent Repair Tool Kit

We continue to be committed to provide you tools with competitive price.
"Save Half", "Half Price" or any other similar expressions used by us only represents an estimate of savings you might benefit from buying certain tools with us compared to the major top brands and does not necessarily mean to cover all categories of tools offered by us. You are kindly reminded to verify carefully when you are placing an order with us if you are actually saving half in comparison with the top major brands.

[Dent Repair Puller] Instruction

1. Find the dent and clean it with a rag and alcohol.
2. Observe the shape and size of the dent, estimate where to pull the dent out, and mark it with a marking pen.
3. Then clean the glue stick with alcohol to remove the grease on its surface.
4. Insert the glue stick into the glue gun and connect the gun to the power supply, then heat it for about 2-3 minutes till the hot melt glue starts to spill out from the gun.
5. Choose a tab that matches the shape and size of the dent, apply hot melt glue on the tab with the glue gun, remember to start from the center of the tab and in a circle inside and out, and make sure the glue is even and full on the tab. (Please note: Bigger tab should be used for bigger dent because it has stronger traction, vice versa)
6. Align the center point of tab with the dent center point, then quickly put the tab on the dent and slightly press it. (Wait 3-5 minutes till it cools down with only a little temperature when it has strongest viscosity.)
7. Buckle the puller till it is fastened, hold the handle of the puller, impact upwards, gradually increase the force, repeat several times till the surface of the dent flattens or slightly bulges (do not impact too fiercely to avoid the tab off the car body)
8. If the center of some small dents is deeper than around, please use the rubber hammer to tap on the around part, that will make the dent more smooth to process.
9. After repair, spray alcohol on the part covered by glue and remove it with a scraper.
10. Check the result; if not ideal, repeat the above steps till you get what you want.

[Glue sticks] Instruction

Select correct glue sticks:

1. Transparent glue stick: For Japanese cars which have thin paint. Used for all natural temperature.
2. Yellow glue stick: For European and American cars which have thick paint. And it is a better choice to deal with small dents.
3. Black glue stick: For all cars. And the effect is better in the temperature of 20°C-28°C.

[Dent Repair Lifter] Instruction

1. Find the dent and clean it with a rag and alcohol.
2. Observe the shape and size of the dent, estimate where to pull the dent out, and mark it with a marking pen.
3. Then clean the glue stick with alcohol to remove the grease on its surface.
4. Insert the glue stick into the glue gun and connect the gun to the power supply, then heat it about for 2-3 minutes till the hot melt glue starts to spill out from the gun.
5. Choose a tab that matches the shape and size of the dent; apply hot melt glue on the tab with the glue gun, remember to start from the center of the tab and in a circle inside and out, and make sure the glue is even and full on the tab. (Please note: Bigger tab should be used for bigger dent because it has stronger traction, vice versa)
6. Align the center point of tab with the dent center point, and then quickly put the tab on the dent and slightly press it. (Wait 3-5 minutes till it cools down with only a little temperature when it has strongest viscosity.)
7. Buckle the lifter till it is fastened, hold the handle of the lifter downwards gradually increase the force, repeat several times till the surface of the dent flattens or slightly bulges. Deal with this slowly and carefully.
8. If the center of some small dents is deeper than around, please use the rubber hammer to tap on the around part that will make the dent more smooth to process.

[Dent Repair Bridge] Instruction

1. Find the dent and clean it with a rag and alcohol.
2. Observe the shape and size of the dent, estimate where to pull the dent out, and mark it with a marking pen.
3. Then clean the glue stick with alcohol to remove the grease on its surface.
4. Insert the glue stick into the glue gun and connect the gun to the power supply, then heat it about for 2-3 minutes till the hot melt glue starts to spill out from the gun.
5. Choose a tab that matches the shape and size of the dent; apply hot melt glue on the tab with the glue gun, remember to start from the center of the tab and in a circle inside and out, and make sure the glue is even and full on the tab. (Please note: Bigger tab should be used for bigger dent because it has stronger traction, vice versa)
6. Align the center point of tab with the dent center point, then quickly put the tab on the dent and slightly press it. (Wait 3-5 minutes till it cools down with only a little temperature when it has strongest viscosity.)
7. Buckle the nut, screw it till the surface of the dent flattens or slightly bulges. Deal with this slowly and carefully.
8. If the center of some small dents is deeper than around, please use the rubber hammer to tap on the around part that will make the dent more smooth to process.
9. After repair, spray alcohol on the part covered by glue and remove it with a scraper.
10. Check the result; if not ideal, repeat the above steps till you get what you want.

***Notice:**

1. Do not use a car charge glue gun if the dent is on the engine hood. Because you need to start the car, it will cause a high temperature, which will influence the glue stick's effect.
2. Do not repair under the blasing sun because the high temperature of the car body will influence the effect of the glue stick.
3. When applying the glue, remember to start from the center of the tab and in a circle inside and out, and make sure the glue is even and full on the tab.

[Tabs] Instruction

There are 2 kinds of tabs.

1. Plastic tabs

- 1). To dissolve the attached impurity, the plastic tabs should be soaked for 3 hours with alcohol before use.
- 2). Heat the glue sticks with the glue gun, and apply hot melt glue on the tab evenly with proper amount depending on its viscosity and car body condition.
- 3). Put the tab with glue on the dent, slightly press it. Do not press fiercely to ensure a certain thickness of glue.
- 4). Choose the right tabs though observing the shape and size of the dent. Choose thin tabs for cars with soft body and thin paint and thick tabs for cars with hard body and thick paint.

2. Metal tabs

The quality is the best, adhesive ability is the strongest; it can be used repeatedly; 6 size and shape is available.

Features:
A complete range of shapes and sizes are available to deal with all kinds of dents and it applies to all car body types.

[Glue Gun] Instruction

1. There are 2 types of glue guns, one is a vehicle glue gun, and the other is a 220V glue gun. The difference is the connector. The connector of the vehicle glue gun can directly connect with the car, while that of the 220V glue gun cannot.
2. The voltage of the vehicle glue gun is 12V, you can directly insert it into cigarette lighter, insert the glue stick, and then turn on the switch to start. Wait for 2-3 minutes till the glue stick melt and the temperature inside can reach to 160°C.
3. The 220V glue gun needs to be connected with power supply, insert the glue stick and then turn on the switch to start.

Features:

The 12V vehicle glue gun is our independent design. It is durable. The appearance is elegant and nozzle is bronze. The glue stick can melt fast. The power line is 2 meters long which is 0.5 meters longer than ordinary wires.

Q&A

Q: Which dent can be repaired and which cannot?

A: The smooth and hail dent can be 100% repaired, and the angular part needs more patience with different tools. The tiny dent which is hit by sharp object is difficult to repair. If the part with tiny dent can be removed or the back side of the dent can be contacted directly, you can directly deal with it with dent tester-LED line board or ordinary line board, tap down pen and tap down hammer. Remember never use a iron hammer or other hard objects to repair, because the paint will be damaged.

Q: To what degree can the tool reach?

A: This repair tool can repair 70%-80% dents. The smooth and hail dent can be well repaired. The angular dent, line dent and dent caused by sharp objects are difficult to repair. But you can still repair it by knocking the around part of the dent with a rubber hammer first. But it doesn't work if the paint has been damaged.

Q: Is the operation easy?

A: It is very easy. Even a beginner without any experience can handle as long as he or she read and watch our image-text and video tutorial carefully.

Q: If the glue doesn't work well, the viscosity is not enough, how to solve it?

A: 1. The glue works better in a sunny day and in the temperature of 20°C-28°C.
2. The viscosity of the glue is influenced by the humidity and temperature. Generally, the hot melt glue will dry within 2-5 minutes in summer and 1-3 minutes in a cold day. It depends on actual situation, sometimes 20 seconds is enough.
3. If the tab is off in the process of operating, it may be because the amount of glue is not enough or the temperature of car body is too high or your operation is not correct. The problem will be gone if you apply more glue, turn off the car engine, and then repeatedly operate.

Warm tips:

If the glue becomes fragile in an extremely cold day, you can apply hot water on the dent first, and then apply the glue.

Attention:

1. Glue sticks or repair tools bought from some local stores may fail to do the job as expected. They can't guarantee a good repair effect and may damage the paint. Our tools and glue sticks are professionally designed and applied to car body with years of practical experience. The paint won't be damaged and the repair effect is pretty good if you operate correctly.
2. If the paint of your car is not original, we suggest you not to buy our tools as it may damage the paint.

Notes :

If the product you received has quality problems or it is broken when you received or you find a shortage in number, please do not hesitate to tell us via photos or e-mails, we will reply you in time. Please read the instruction carefully before you use our product, and according to the instruction to operate it. If there is any question please feel free to contact us, we will arrange our technical staff to help you. Please give us a reasonable and fair feedback if you think our product is practical. It is really helpful to other person when they want to buy this product. You can not use the vehicle glue gun when there is dent on the hood need to repair, because the vehicle glue gun needs to start the car to charge it, and this action will cause the hood gets hot, if the hood get hot, the glue will be soft, and if the glue was soft, the viscosity will be weak, but except the place where its weather is extremely cold.

[how to operate the slide hammer dent puller]

Prepare the tools

You had better to clean the dent with alcohol and rag before repair.

[The assembly process for slide hammer dent puller]

- 1st: Connect the handle with the connecting rod of the puller.
- 2nd: Let the slide hammer and spring through the connecting rod.
- 3rd: Twist the puller.
- 4th: Installation is ok.

[The assembly process for short T]

1. Tear down the dent repair puller as picture.
2. Twist the handle and the connecting rod and make from one.
3. Installation is ok.

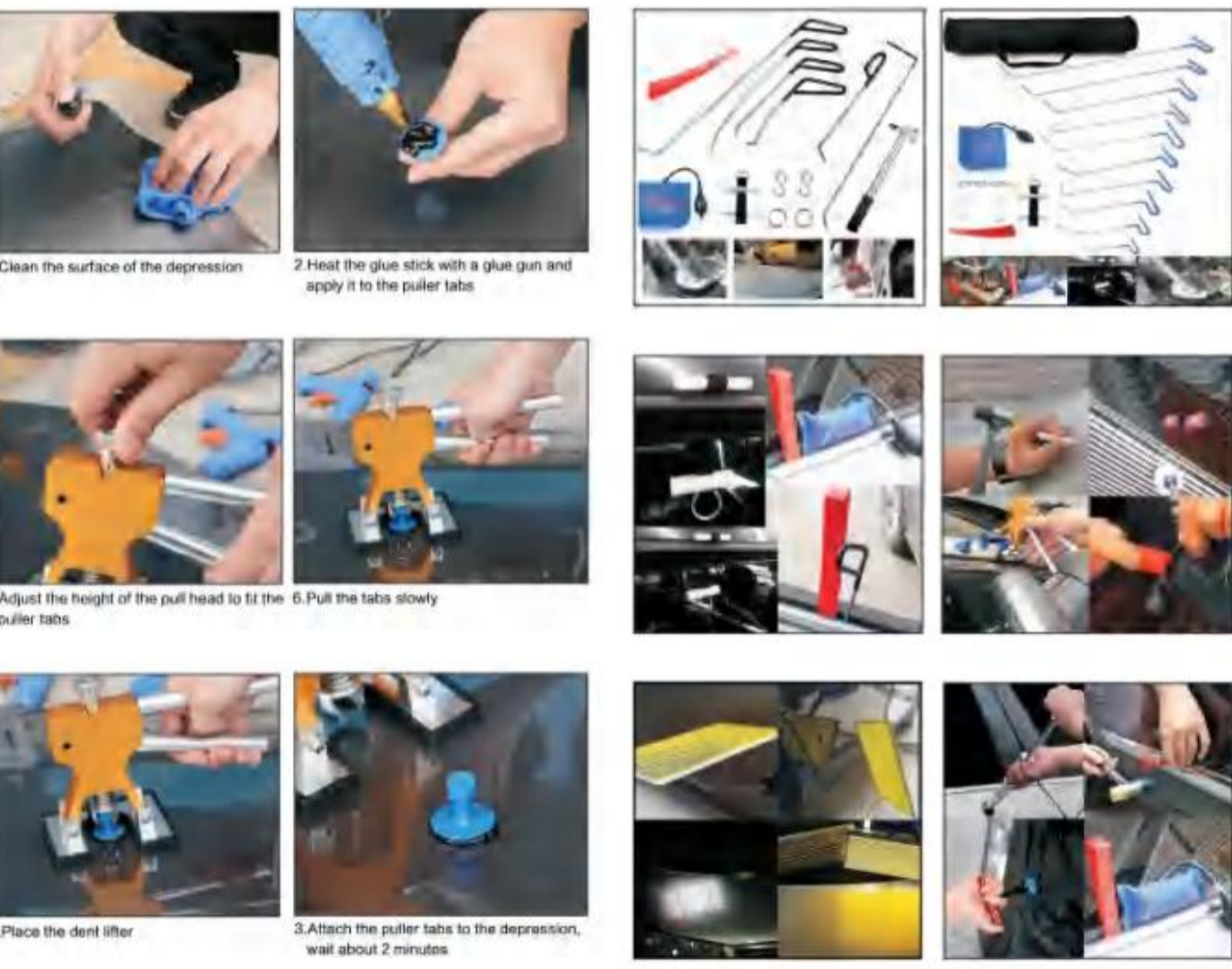
[The clean process for Glue Stick]

1. Prepare the glue stick and alcohol and rag.
2. Spray the alcohol on the glue stick.
3. Wipe the glue stick up with rag.
4. Insert the glue stick into the glue gun and prepare to charge it.

[Remark: slide hammer dent puller hereinafter referred to as "T puller"]

1. Clean the dent with wet rag, and mark it with marking pen.
2. Insert the glue stick into the glue gun and charge it by 3-5 minutes.
3. Choose a tab that matches the shape and size of the dent. (Please note: Bigger tab should be used for bigger dent because it has stronger traction, vice versa)
4. Apply hot melt glue on the tab with the glue gun, remember to start from the center of the tab and in a circle inside and out, and make sure the glue is even and full on the tab.
5. Align the center point of tab with the dent center point, then quickly put the tab on the dent and slightly press it. (Wait 3-5 minutes till it cools down with only a little temperature when it has strongest viscosity.)
6. Touch the glue with your hand. When it cools down with only a little temperature, buckle the tab with T puller and fasten its position.
7. Hold the handle to impact upwards gradually till its surface flattens.
8. Spray the alcohol on the residual glue, and then clean it up with the scraper.

Kindly reminder:
If it is still unrepaired after above steps, you can repeat the steps several times till it is well repaired.
If the dent is repaired, but there's a bump on it, you can do as following steps:
1. Press the bump with your thumb continuously till it flattens.
2. If fail after the first step, you can use a tap down pen and aim at the bump, then knock it slightly with a rubber hammer. You can repeat till successful. (Please do not knock with too much force).



VEVOR[®]

TOUGH TOOLS, HALF PRICE

Product List

Modello e immagine	XPT908	Modello: XPT909		Modello: XPT910	Modello: XPT911	Modello: XPT912	Modello: XPT913	Modello: XPT914	Modello: XPT915	Modello: XPT916	Modello: XPT917	Modello: XPT918
Estrattore a forma di T												
Borsa di stoffa												
Catena		1										
Squillo		3										
Scosco		3										
Paletta di legno	5											
Paletta di legno		10										
Paletta di legno			21									
Paletta di legno												10
Cuneo rosso												
Pala dritta rossa												
Martello sconvolto				1	1	1	1	1	1	1	1	1
Martello da riparazione												
Estensore per armature di ponte												
Estensore di armatura dritto												
Pistola per colla				1	1	1	1	1	1	1	1	1
Colla stick				12	12	20	12	12	10	10	15	
Lingotto di plastica				24	24	34	36	54	66	66	54	
Sensore della linea di trazione												
Bottiglia spray				1	1							
Stoffa				1	1							
Stoffa												
Borsa per il trasporto degli attrezzi				2	2	2	2	2	2	2	2	2
Borsa agli attrezzi	1	1	1	1	1	1	1	1	1	1	1	1
Penna a pressione												
Martello				1	1	1	1	1	1	1	1	1
Punta della penna Tap-down				1	1	1	1	1	1	1	1	1
Manico in gomma	8	1		8	8	8	8	8	8	8	8	8
Raschietto				2	1							
Raschietto												
Quattro	2	2	2	2	2	2	2	2	2	2	2	2
Paravento riflettente												

Technical Support and E-Warranty Certificate
www.vevor.com/support
Made In China

Questa è l'istruzione originale, si prega di leggere tutte le istruzioni del manuale attentamente prima di operare. VEVOR si riserva una chiara interpretazione del nostro manuale utente. L'aspetto del prodotto sarà soggetto alla prodotto che hai ricevuto. Perdonaci se non ti informeremo di nuovo se ci sono aggiornamenti tecnologici o software sul nostro prodotto.

IMPORTANTI MISURE DI SICUREZZA



Conservare queste istruzioni. Leggere tutte le precauzioni e istruzioni. Leggi tutte le Informazioni Importanti sulla Sicurezza sezione all'inizio di questo documento, incluso tutto il testo sotto le sottovoci ivi contenute prima dell'impostazione o dell'uso di questo

prodotto. Leggere e comprendere l'intero manuale prima di assemblare, installare,

funzionamento o la manutenzione di questo prodotto. La mancata osservanza di queste avvertenze e le istruzioni possono causare morte, lesioni personali o danni a proprietà di valore.

1. MANTENERE L'AREA DI LAVORO PULITA E ASCIUTTA.

Aree di lavoro disordinate, umide o bagnate favoriscono gli infortuni.

2. TENERE I BAMBINI LONTANI DALL'AREA DI LAVORO.

Questo prodotto non è un giocattolo. Non permettere ai bambini di usare o avvicinarsi a questo prodotto.

3. CONSERVARE L'ATTREZZATURA INUTILIZZABILE.

Quando non vengono utilizzati, gli utensili e le attrezzature devono essere riposti in un luogo asciutto per inibire la ruggine. Chiudere sempre a chiave gli utensili e le attrezzature e tenerli fuori dalla portata dei bambini.

4. NON USARE QUESTO PRODOTTO SE SOTTO L'INFLUENZA DI ALCOL O DROGHE.

Leggi le etichette di avvertenza sulle prescrizioni per determinare se il tuo giudizio o i tuoi riflessi sono compromessi durante l'assunzione di farmaci. In caso di dubbi, non tentare di utilizzare questo prodotto.

5. OPERARE IN SICUREZZA.

a. Indossare occhiali di sicurezza approvati ANSI e guanti da lavoro resistenti durante l'uso.

b. Quando si lavora con questo prodotto, è necessario utilizzare calzature antiscivolo o scarpe di sicurezza. prodotto. Non indossare abiti larghi o gioielli poiché potrebbero impigliarsi parti in movimento. Indossare una copertura protettiva per capelli per evitare che i capelli lunghi rimanere intrappolati in parti in movimento. Se indossi una maglietta a maniche lunghe, arrotola le maniche sopra i gomiti.

6. NON ESAGERARE.

Mantenere sempre un appoggio e un equilibrio adeguati per evitare di inciampare, cadere e tornare indietro. infortunio, ecc.

7. RIMANI ATTENTO.

Fai sempre attenzione a quello che fai. Usa il buon senso. Non usare questo prodotto quando sei stanco o distratto dal lavoro che stai svolgendo.

8. CONTROLLARE LA PRESENZA DI PARTI DANNEGGIATE.

Prima di utilizzare questo prodotto, controllare attentamente che funzioni correttamente e svolgere la sua funzione prevista. Controllare eventuali parti danneggiate e qualsiasi altro condizioni che possono influire sul funzionamento di questo prodotto. Sostituire o riparare immediatamente le parti danneggiate o usurate.

9. PARTI DI RICAMBIO E ACCESSORI.

Durante la manutenzione, utilizzare solo parti di ricambio identiche. Utilizzare solo accessori destinati a questo prodotto. Gli accessori approvati sono disponibili presso il distributore.

10. MANTENERE QUESTO PRODOTTO CON CURA.

Mantenere questo utensile pulito e asciutto e mantenere le lame della sega pulite e affilate per prestazioni migliori e più sicure.

11. MANUTENZIONE:

Per la vostra sicurezza, la manutenzione e l'assistenza devono essere eseguite regolarmente da un tecnico qualificato.

12. UTILIZZARE IL PRODOTTO GIUSTO PER IL LAVORO GIUSTO.

- a. Utilizzare solo come previsto.
- b. Ci sono alcune applicazioni per cui questo prodotto è stato progettato. Non utilizzare piccole attrezzature, utensili o accessori per svolgere il lavoro di grandi industrie attrezzature, utensili o accessori. Non utilizzare questo prodotto per uno scopo per il quale non era previsto.

13. Istruzioni di sicurezza per la pistola per colla a caldo

Quando si utilizza la pistola per colla a caldo, è necessario adottare sempre le precauzioni di sicurezza di base seguenti:

- a. Leggere tutte le istruzioni.
- b. Controllare che la tensione indicata sulla targhetta dati corrisponda a quella dell'apparecchio. c. Non lasciare l'apparecchio incustodito mentre è collegato alla rete elettrica.

alimentazione. d. Non immergere l'apparecchio in acqua o altri liquidi.

È indispensabile scollegare il cavo di alimentazione dopo aver utilizzato l'apparecchio, prima di pulirlo e durante la riparazione. e. È richiesta un'attenta

supervisione quando si utilizza questo apparecchio in presenza di bambini.

f. Non lasciare mai l'apparecchio alla portata dei bambini. g. Le

riparazioni degli apparecchi elettrici devono essere eseguite solo da personale qualificato.

elettricista. Riparazioni improprie possono esporre l'utente a gravi rischi. h. Questo

apparecchio è destinato esclusivamente all'uso domestico e non deve essere utilizzato per scopi commerciali.

i. Non utilizzare l'apparecchio con una spina o un cavo danneggiati, dopo un malfunzionamento o dopo una caduta o un danneggiamento di qualsiasi tipo.

j. Non utilizzare l'apparecchio per scopi diversi da quelli previsti. k. Non toccare superfici

calde, né utilizzare maniglie o manopole quando si lavora con l'unità.

l. Tenere l'apparecchio e il suo cavo fuori dalla portata dei bambini di età inferiore a 8 anni. Questo

L'apparecchio non è destinato all'uso da parte di persone (bambini compresi) con ridotte capacità fisiche, sensoriali o mentali, o mancanza di esperienza e conoscenza, a meno che non abbiano ricevuto supervisione o istruzioni circa l'uso dell'apparecchiatura.

apparecchio da una persona responsabile della loro sicurezza. I bambini devono essere sorvegliati per assicurarsi che non giochino con l'apparecchio. m. Se il cavo

di alimentazione è danneggiato, deve essere sostituito dal produttore, dal suo addetto all'assistenza o a persone con qualifica simile per evitare pericoli.



Smaltimento corretto della pistola per colla

a caldo: questo prodotto è soggetto alle disposizioni della direttiva europea 2012/19/CE. Il simbolo raffigurante un bidone della spazzatura barrato indica che il prodotto richiede la raccolta differenziata dei rifiuti nell'Unione Europea. Ciò si applica al prodotto e a tutti gli accessori contrassegnati con questo simbolo. I prodotti contrassegnati come tali non possono essere smaltiti con i normali rifiuti domestici, ma devono essere portati in un punto di raccolta per il riciclaggio di dispositivi elettrici ed elettronici

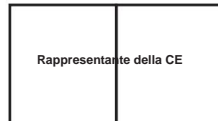
Indirizzo: Baoshanqu Shuangchenglu 803long 11hao 1602A-1609shi Shanghai **Importato in AUS:**

SIHAO PTY LTD. 1 ROKEVA STREETEASTWOOD NSW 2122 Australia **Importato in USA:** Sanven Technology

Ltd. Suite 250, 9166 Anaheim Place, Rancho Cucamonga, CA 91730



Gruppo Pooledas Ltd
Unità 5 Albert Edward House, I padiglioni
Preston, Regno Unito



Azienda SHUNSHUN GmbH
Römeräcker 9 Z2021, 76351 Linkenheim-
Hochstetten, Germania

Made in China

VEVOR®

TOUGH TOOLS, HALF PRICE

Supporto tecnico e certificato di garanzia elettronica
www.vevor.com/support

VEVOR[®]

TOUGH TOOLS, HALF PRICE

Technical Support and E-Warranty Certificate
www.vevor.com/support

Dent Repair Tool Kit

We continue to be committed to provide you tools with competitive price.
"Save Half", "Half Price" or any other similar expressions used by us only represents an estimate of savings you might benefit from buying certain tools with us compared to the major top brands and does not necessarily mean to cover all categories of tools offered by us. You are kindly reminded to verify carefully when you are placing an order with us if you are actually saving half in comparison with the top major brands.

[Dent Repair Puller] Instruction

1. Find the dent and clean it with a rag and alcohol.
2. Observe the shape and size of the dent, estimate where to pull the dent out, and mark it with a marking pen.
3. Then clean the glue stick with alcohol to remove the grease on its surface.
4. Insert the glue stick into the glue gun and connect the gun to the power supply, then heat it for about 2-3 minutes till the hot melt glue starts to spill out from the gun.
5. Choose a tab that matches the shape and size of the dent, apply hot melt glue on the tab with the glue gun, remember to start from the center of the tab and in a circle inside and out, and make sure the glue is even and full on the tab. (Please note: Bigger tab should be used for bigger dent because it has stronger traction, vice versa)
6. Align the center point of tab with the dent center point, then quickly put the tab on the dent and slightly press it. (Wait 3-5 minutes till it cools down with only a little temperature when it has strongest viscosity.)
7. Buckle the puller till it is fastened, hold the handle of the puller, impact upwards, gradually increase the force, repeat several times till the surface of the dent flattens or slightly bulges (do not impact too fiercely to avoid the tab off the car body)
8. If the center of some small dents is deeper than around, please use the rubber hammer to tap on the around part, that will make the dent more smooth to process.
9. After repair, spray alcohol on the part covered by glue and remove it with a scraper.
10. Check the result; if not ideal, repeat the above steps till you get what you want.

[Glue sticks] Instruction

Select correct glue sticks:

1. Transparent glue stick: For Japanese cars which have thin paint. Used for all natural temperature.
2. Yellow glue stick: For European and American cars which have thick paint. And it is a better choice to deal with small dents.
3. Black glue stick: For all cars. And the effect is better in the temperature of 20°C-28°C.

[Dent Repair Lifter] Instruction

1. Find the dent and clean it with a rag and alcohol.
2. Observe the shape and size of the dent, estimate where to pull the dent out, and mark it with a marking pen.
3. Then clean the glue stick with alcohol to remove the grease on its surface.
4. Insert the glue stick into the glue gun and connect the gun to the power supply, then heat it about for 2-3 minutes till the hot melt glue starts to spill out from the gun.
5. Choose a tab that matches the shape and size of the dent; apply hot melt glue on the tab with the glue gun, remember to start from the center of the tab and in a circle inside and out, and make sure the glue is even and full on the tab. (Please note: Bigger tab should be used for bigger dent because it has stronger traction, vice versa)
6. Align the center point of tab with the dent center point, and then quickly put the tab on the dent and slightly press it. (Wait 3-5 minutes till it cools down with only a little temperature when it has strongest viscosity.)
7. Buckle the lifter till it is fastened, hold the handle of the lifter, gradually increase the force, repeat several times till the surface of the dent flattens or slightly bulges. Deal with this slowly and carefully.
8. If the center of some small dents is deeper than around, please use the rubber hammer to tap on the around part that will make the dent more smooth to process.

[Dent Repair Bridge] Instruction

1. Find the dent and clean it with a rag and alcohol.
2. Observe the shape and size of the dent, estimate where to pull the dent out, and mark it with a marking pen.
3. Then clean the glue stick with alcohol to remove the grease on its surface.
4. Insert the glue stick into the glue gun and connect the gun to the power supply, then heat it about for 2-3 minutes till the hot melt glue starts to spill out from the gun.
5. Choose a tab that matches the shape and size of the dent; apply hot melt glue on the tab with the glue gun, remember to start from the center of the tab and in a circle inside and out, and make sure the glue is even and full on the tab. (Please note: Bigger tab should be used for bigger dent because it has stronger traction, vice versa)
6. Align the center point of tab with the dent center point, then quickly put the tab on the dent and slightly press it. (Wait 3-5 minutes till it cools down with only a little temperature when it has strongest viscosity.)
7. Buckle the nut, screw it till the surface of the dent flattens or slightly bulges. Deal with this slowly and carefully.
8. If the center of some small dents is deeper than around, please use the rubber hammer to tap on the around part that will make the dent more smooth to process.
9. After repair, spray alcohol on the part covered by glue and remove it with a scraper.
10. Check the result; if not ideal, repeat the above steps till you get what you want.

***Notice:**

1. Do not use a car charge glue gun if the dent is on the engine hood. Because you need to start the car, it will cause a high temperature, which will influence the glue stick's effect.
2. Do not repair under the blating sun because the high temperature of the car body will influence the effect of the glue stick.
3. When applying the glue, remember to start from the center of the tab and in a circle inside and out, and make sure the glue is even and full on the tab.

[Tabs] Instruction

There are 2 kinds of tabs.

1. Plastic tabs

- 1). To dissolve the attached impurity, the plastic tabs should be soaked for 3 hours with alcohol before use.
- 2). Heat the glue sticks with the glue gun, and apply hot melt glue on the tab evenly with proper amount depending on its viscosity and car body condition.
- 3). Put the tab with glue on the dent, slightly press it. Do not press fiercely to ensure a certain thickness of glue.
- 4). Choose the right tabs though observing the shape and size of the dent. Choose thin tabs for cars with soft body and thin paint and thick tabs for cars with hard body and thick paint.

2. Metal tabs

The quality is the best, adhesive ability is the strongest; it can be used repeatedly; 6 size and shape is available.

Features:
A complete range of shapes and sizes are available to deal with all kinds of dents and it applies to all car body types.

[Glue Gun] Instruction

1. There are 2 types of glue guns, one is a vehicle glue gun, and the other is a 220V glue gun. The difference is the connector. The connector of the vehicle glue gun can directly connect with the car, while that of the 220V glue gun cannot.
2. The voltage of the vehicle glue gun is 12V; you can directly insert it into cigarette lighter, insert the glue stick, and then turn on the switch to start. Wait for 2-3 minutes till the glue stick melt and the temperature inside can reach to 160°C.
3. The 220V glue gun needs to be connected with power supply, insert the glue stick and then turn on the switch to start.

Features:
The 12V vehicle glue gun is our independent design. It is durable. The appearance is elegant and nozzle is bronze. The glue stick can melt fast. The power line is 2 meters long which is 0.5 meters longer than ordinary wires.

Q&A

Q: Which dent can be repaired and which cannot?
A: The smooth and half dent can be 100% repaired, and the angular part needs more patience with different tools. The tiny dent which is hit by sharp object is difficult to repair. If the part with tiny dent can be removed or the back side of the dent can be contacted directly, you can directly deal with it with dent tester-LED line board or ordinary line board, tap down pen and tap down hammer. Remember never use a iron hammer or other hard objects to repair, because the paint will be damaged.

Q: To what degree can the tool reach?
A: This repair tool can repair 70%-80% dents. The smooth and half dent can be well repaired. The angular dent, line dent and dent caused by sharp objects are difficult to repair. But you can still repair it by knocking the around part of the dent with a rubber hammer first. But it doesn't work if the paint has been damaged.

Q: Is the operation easy?
A: It is very easy. Even a beginner without any experience can handle as long as he or she read and watch our image-text and video tutorial carefully.

Q: If the glue doesn't work well, the viscosity is not enough, how to solve it?
A: 1. The glue works better in a sunny day and in the temperature of 20°C-28°C.
2. The viscosity of the glue is influenced by the humidity and temperature. Generally, the hot melt glue will dry within 2-5 minutes in summer and 1-3 minutes in a cold day. It depends on actual situation, sometimes 20 seconds is enough.

Q: If the tab is off in the process of operating, it may be because the amount of glue is not enough or the temperature of car body is too high or your operation is not correct. The problem will be gone if you apply more glue, turn off the car engine, and then repeatedly operate.

Warm tips:
If the glue becomes fragile in an extremely cold day, you can apply hot water on the dent first, and then apply the glue.

Attention:

1. Glue sticks or repair tools bought from some local stores may fail to do the job as expected. They can't guarantee a good repair effect and may damage the paint. Our tools and glue sticks are professionally designed and applied to car body with years of practical experience. The paint won't be damaged and the repair effect is pretty good if you operate correctly.
2. If the paint of your car is not original, we suggest you not to buy our tools as it may damage the paint.

Notes :

If the product you received has quality problems or it is broken when you received or you find a shortage in number, please do not hesitate to tell us via photos or e-mails, we will reply you in time. Please read the instruction carefully before you use our product, and according to the instruction to operate it. If there is any question please feel free to contact us, we will arrange our technical staff to help you. Please give us a reasonable and fair feedback if you think our product is practical. It is really helpful to other person when they want to buy this product.

You can not use the vehicle glue gun when there is dent on the hood need to repair, because the vehicle glue gun needs to start the car to charge it, and this action will cause the hood gets hot, if the hood get hot, the glue will be soft, and if the glue was soft, the viscosity will be weak, but except the place where its weather is extremely cold.

[how to operate the slide hammer dent puller]

Prepare the tools
You had better to clean the dent with alcohol and rag before repair.

[The assembly process for slide hammer dent puller]

- 1st: Connect the handle with the connecting rod of the puller.
- 2nd: Let the slide hammer and spring through the connecting rod.
- 3rd: Twist the puller.
- 4th: Installation is ok.

[The assembly process for short T]

1. Tear down the dent repair puller as picture.
2. Twist the handle and the connecting rod and make from one.
3. Installation is ok.

[The clean process for Glue Stick]

1. Prepare the glue stick and alcohol and rag.
2. Spray the alcohol on the glue stick.
3. Wipe the glue stick up with rag.
4. Insert the glue stick into the glue gun and prepare to charge it.

[Remark: slide hammer dent puller hereinafter referred to as "T puller"]

1. Clean the dent with wet rag, and mark it with marking pen.
2. Insert the glue stick into the glue gun and charge it by 3-5 minutes.
3. Choose a tab that matches the shape and size of the dent. (Please note: Bigger tab should be used for bigger dent because it has stronger traction, vice versa)
4. Apply hot melt glue on the tab with the glue gun, remember to start from the center of the tab and in a circle inside and out, and make sure the glue is even and full on the tab.
5. Align the center point of tab with the dent center point, then quickly put the tab on the dent and slightly press it. (Wait 3-5 minutes till it cools down with only a little temperature when it has strongest viscosity.)
6. Touch the glue with your hand. When it cools down with only a little temperature, buckle the tab with T puller and fasten its position.
7. Hold the handle to impact upwards gradually till its surface flattens.
8. Spray the alcohol on the residual glue, and then clean it up with the scraper.

Kindly reminder:
If it is still unrepaired after above steps, you can repeat the steps several times till it is well repaired.
If the dent is repaired, but there's a bump on it, you can do as following steps:
1. Press the bump with your thumb continuously till it flattens.
2. If fail after the first step, you can use a tap down pen and aim at the bump, then knock it slightly with a rubber hammer. You can repeat till successful. (Please do not knock with too much force).

1. Clean the surface of the depression
2. Heat the glue stick with a glue gun and apply it to the puller tabs
3. Adjust the height of the pull head to fit the puller tabs
4. Place the dent lifter
5. Attach the puller tabs to the depression, wait about 2 minutes
6. Pull the tabs slowly
3. Attach the puller tabs to the depression, wait about 2 minutes

VEVOR[®]

TOUGH TOOLS, HALF PRICE

Product List

Modelo y foto	XPT9008	XPT9009	XPT9010	XPT9011	XPT9012	XPT9013	XPT9014	XPT9015	XPT9016	XPT9017	XPT9018
Lista de piezas y foto											
Extractor en forma de T							1		2	1	1
Bolsa de tela											2
Cadena		1									
Anillo		3									
Tornillo		3									
Palanca	5										
Palanca		10									
Palanca			21								
Palanca					10						
Palanca										10	
Cuñía roja							1				
Pala recta roja							1				
Martillo deslizante					1	1	1	1	1	1	1
Martillo de reparación							1		1	1	1
Extractor de abolladuras de puertas					1 juego de 3 piezas		1 juego de 7 piezas		1 juego de 7 piezas		
Extractor de abolladuras dobles					1	1	1	1	1	1	1
Punta de aluminio					1	1	1	1	1	1	1
Barras de pagamento					12	12	20	12	12	10	15
Pestaña de plástico					24	24	34	36	54	66	54
Ranura de la línea de tracción					1 juego de 4 piezas						
botella de spray					1	1		1	1	1	1
Paño					1	1			1	1	1
Paño								1			
Bolsa de transporte de herramientas					2	2	2	2	2	2	2
Bolsa de herramientas	1	1	1	1	1	1	1	1	1	1	1
Objetivo de nueva herramienta										5	5
Martillo		1			1	1	1	1	1	1	1
Punta del martillo con punta nueva de acero		1			1	1	1	1	1	1	1
Manga de goma	8	1			8	8	8	8	8	8	8
Raspador					2	1		2	2	1	2
Raspador								1			
Guante	2	2	2	2	2	2	2	2	2	2	2
Tablero reflectivo								1		1	1

Technical Support and E-Warranty Certificate
www.vevor.com/support
Made In China

Estas son las instrucciones originales, lea todas las instrucciones del manual.

Antes de operar, tenga cuidado. VEVOR se reserva una interpretación clara de nuestras manual de usuario. La apariencia del producto estará sujeta a las producto que recibiste. Por favor, perdónanos por no informarte nuevamente si ¿Hay alguna actualización tecnológica o de software en nuestro producto?

MEDIDAS DE SEGURIDAD IMPORTANTES



Guarde estas instrucciones. Lea todas las precauciones y Instrucciones Lea toda la información de seguridad importante Sección al comienzo de este documento que incluye todo el texto. bajo los subtítulos antes de la instalación o uso de este

producto. Lea y comprenda todo este manual antes de ensamblar, instalar,

operar o reparar este producto. El incumplimiento de estas advertencias y las instrucciones pueden causar la muerte, lesiones personales o daños a propiedad valiosa

1. MANTENGA EL ÁREA DE TRABAJO LIMPIA Y SECA.

Las áreas de trabajo desordenadas, húmedas o mojadas invitan a las lesiones.

2. MANTENGA A LOS NIÑOS ALEJADOS DEL ÁREA DE TRABAJO.

Este producto no es un juguete. No permita que los niños utilicen este producto ni se acerquen a él.

3. GUARDE EL EQUIPO QUE NO ESTÉ UTILIZADO.

Cuando no estén en uso, las herramientas y los equipos deben almacenarse en un lugar seco.

Inhíbe la oxidación. Guarda siempre bajo llave las herramientas y el equipo y mantenlos fuera del alcance de los niños. niños.

4. NO UTILICE ESTE PRODUCTO SI ESTÁ BAJO LA INFLUENCIA DE ALCOHOL O DROGAS.

Lea las etiquetas de advertencia de los medicamentos recetados para determinar si su juicio o sus reflejos se ven afectados al tomar medicamentos. Si tiene alguna duda, no intente utilizar este medicamento. producto.

5. OPERACIÓN SEGURA.

a. Use gafas de seguridad aprobadas por ANSI y guantes de trabajo resistentes.

Durante el uso.

b. Se debe utilizar calzado antideslizante o zapatos de seguridad al trabajar con este producto. No use ropa suelta ni joyas, ya que pueden quedar atrapadas en el partes móviles. Use una cubierta protectora para el cabello para evitar que el cabello largo se quedar atrapado en las piezas móviles. Si lleva una camisa de manga larga, arremánguese las mangas. por encima de los codos.

6. NO SE EXTENDA EXCESIVAMENTE.

Mantenga el equilibrio y los pies en posición vertical en todo momento para evitar tropezar, caerse o retroceder. lesión, etc.

7. MANTENTE ALERTA.

Presta atención a lo que haces en todo momento. Utiliza el sentido común. No utilices este producto cuando esté cansado o distraído del trabajo en cuestión.

8. COMPRUEBE SI HAY PIEZAS DAÑADAS.

Antes de utilizar este producto, compruebe cuidadosamente que funcionará correctamente y Desempeñe su función prevista. Compruebe si hay piezas dañadas o cualquier otro Condiciones que pueden afectar el funcionamiento de este producto. Reemplazar o reparar piezas dañadas o desgastadas inmediatamente.

9. PIEZAS DE REPUESTO Y ACCESORIOS.

Al realizar el mantenimiento, utilice únicamente piezas de repuesto idénticas. Utilice únicamente accesorios Diseñado para este producto. Los accesorios aprobados están disponibles a través del distribuidor.

10. MANTENGA ESTE PRODUCTO CON CUIDADO.

Mantenga esta herramienta limpia y seca, y mantenga las hojas de sierra limpias y afiladas durante Un rendimiento mejor y más seguro.

11. MANTENIMIENTO:

Para su seguridad, el servicio y mantenimiento deben realizarse periódicamente. por un técnico calificado.

12. UTILICE EL PRODUCTO ADECUADO PARA EL TRABAJO ADECUADO.

a. Utilícelo únicamente según lo previsto.

b. Existen ciertas aplicaciones para las cuales este producto fue diseñado. No lo use.

Utilice pequeños equipos, herramientas o accesorios para realizar el trabajo de una máquina industrial más grande.

Equipos, herramientas o accesorios. No utilice este producto para ningún fin.

Lo cual no fue previsto

13. Instrucciones de seguridad de la pistola de pegamento termofusible

Al utilizar su pistola de pegamento termofusible, siempre debe tener en cuenta precauciones básicas de seguridad. seguido:

a. Lea todas las instrucciones.

b. Verifique que el voltaje indicado en la placa de datos corresponda con el del

c. No deje el aparato desatendido mientras esté conectado a la red eléctrica.

suministro. d. No sumerja el aparato en agua ni en ningún otro líquido.

Es imprescindible desenchufar el cable de alimentación después de utilizar el aparato, antes

de limpiarlo o mientras lo reparan. e. Se requiere una

estrecha supervisión cuando se utiliza este aparato cerca de niños.

f. Nunca deje el aparato al alcance de los niños. g. Las reparaciones

de aparatos eléctricos sólo deben ser realizadas por un técnico cualificado.

electricista. Las reparaciones inadecuadas pueden poner al usuario en grave

riesgo. h. Este aparato está destinado únicamente para uso doméstico y no debe utilizarse para fines comerciales.

i. No utilice el aparato si el enchufe o el cable están dañados, si ha sufrido algún mal funcionamiento o si se ha caído o dañado de cualquier forma.

j. No utilice el aparato para ningún otro fin que no sea el previsto. k. No toque

superficies calientes ni utilice manijas o perillas cuando trabaje con la unidad.

l. Mantenga el aparato y su cable fuera del alcance de los niños menores de 8 años.

El aparato no está diseñado para ser utilizado por personas (incluidos niños) con discapacidad.

capacidades físicas, sensoriales o mentales, o falta de experiencia y conocimientos, a menos que hayan recibido supervisión o instrucciones sobre el uso del

aparato por una persona responsable de su seguridad. Los niños deben estar supervisados

para asegurarse de que no jueguen con el aparato. m. Si el

cable de alimentación está dañado, debe ser reemplazado por el fabricante, su

agente de servicio o personas igualmente calificadas para evitar un peligro.

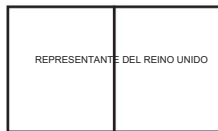


Eliminación correcta de la pistola de pegamento termofusible: Este producto está sujeto a las disposiciones de la Directiva Europea 2012/19/CE. El símbolo que muestra un contenedor de basura tachado indica que el producto requiere una recogida selectiva de residuos en la Unión Europea. Esto se aplica al producto y a todos los accesorios marcados con este símbolo. Los productos marcados como tales no pueden desecharse con los residuos domésticos normales, sino que deben llevarse a un punto de recogida para reciclar dispositivos eléctricos y electrónicos.

Dirección: Baoshanqu Shuangchenglu 803long 11hao 1602A-1609shi Shanghai Importado a AUS:

SIHAO PTY LTD. 1 ROKEVA STREETEASTWOOD NSW 2122 Australia Importado a EE. UU.: Sanven Technology

Ltd. Suite 250, 9166 Anaheim Place, Rancho Cucamonga, CA 91730



Grupo Pooledas Ltd.
Unidad 5 Casa Albert Edward, Los Pabellones
Preston, Reino Unido



SHUNSHUN GmbH
Römeräcker 9 Z2021, 76351 Linkenheim
Hochstetten, Alemania

Hecho en china

VEVOR[®]
TOUGH TOOLS, HALF PRICE

Soporte técnico y certificado de garantía electrónica
www.vevor.com/support

VEVOR®

TOUGH TOOLS, HALF PRICE

Technical Support and E-Warranty Certificate
www.vevor.com/support

Dent Repair Tool Kit

We continue to be committed to provide you tools with competitive price. "Save Half", "Half Price" or any other similar expressions used by us only represents an estimate of savings you might benefit from buying certain tools with us compared to the major top brands and does not necessarily mean to cover all categories of tools offered by us. You are kindly reminded to verify carefully when you are placing an order with us if you are actually saving half in comparison with the top major brands.

[Dent Repair Puller] Instruction

1. Find the dent and clean it with a rag and alcohol.
2. Observe the shape and size of the dent, estimate where to pull the dent out, and mark it with a marking pen.
3. Then clean the glue stick with alcohol to remove the grease on its surface.
4. Insert the glue stick into the glue gun and connect the gun to the power supply, then heat it for about 2-3 minutes till the hot melt glue starts to spill out from the gun.
5. Choose a tab that matches the shape and size of the dent, apply hot melt glue on the tab with the glue gun, remember to start from the center of the tab and in a circle inside and out, and make sure the glue is even and full on the tab. (Please note: Bigger tab should be used for bigger dent because it has stronger traction, vice versa)
6. Align the center point of tab with the dent center point, then quickly put the tab on the dent and slightly press it. (Wait 3-5 minutes till it cools down with only a little temperature when it has strongest viscosity.)
7. Buckle the puller till it is fastened, hold the handle of the puller, impact upwards, gradually increase the force, repeat several times till the surface of the dent flattens or slightly bulges (do not impact too fiercely to avoid the tab off the car body)
8. If the center of some small dents is deeper than around, please use the rubber hammer to tap on the around part, that will make the dent more smooth to process.
9. After repair, spray alcohol on the part covered by glue and remove it with a scraper.
10. Check the result; if not ideal, repeat the above steps till you get what you want.

[Glue sticks] Instruction

- Select correct glue sticks:
1. Transparent glue stick: For Japanese cars which have thin paint. Used for all natural temperature.
 2. Yellow glue stick: For European and American cars which have thin paint. And it is a better choice to deal with small dents.
 3. Black glue stick: For all cars. And the effect is better in the temperature of 20°C-28°C.

[Dent Repair Lifter] Instruction

1. Find the dent and clean it with a rag and alcohol.
2. Observe the shape and size of the dent, estimate where to pull the dent out, and mark it with a marking pen.
3. Then clean the glue stick with alcohol to remove the grease on its surface.
4. Insert the glue stick into the glue gun and connect the gun to the power supply, then heat it about for 2-3 minutes till the hot melt glue starts to spill out from the gun.
5. Choose a tab that matches the shape and size of the dent; apply hot melt glue on the tab with the glue gun, remember to start from the center of the tab and in a circle inside and out, and make sure the glue is even and full on the tab. (Please note: Bigger tab should be used for bigger dent because it has stronger traction, vice versa)
6. Align the center point of tab with the dent center point, and then quickly put the tab on the dent and slightly press it. (Wait 3-5 minutes till it cools down with only a little temperature when it has strongest viscosity.)
7. Buckle the lifter till it is fastened, hold the handle of the lifter, gradually increase the force, repeat several times till the surface of the dent flattens or slightly bulges. Deal with this slowly and carefully.
8. If the center of some small dents is deeper than around, please use the rubber hammer to tap on the around part that will make the dent more smooth to process.

[Dent Repair Bridge] Instruction

1. Find the dent and clean it with a rag and alcohol.
2. Observe the shape and size of the dent, estimate where to pull the dent out, and mark it with a marking pen.
3. Then clean the glue stick with alcohol to remove the grease on its surface.
4. Insert the glue stick into the glue gun and connect the gun to the power supply, then heat it about for 2-3 minutes till the hot melt glue starts to spill out from the gun.
5. Choose a tab that matches the shape and size of the dent; apply hot melt glue on the tab with the glue gun, remember to start from the center of the tab and in a circle inside and out, and make sure the glue is even and full on the tab. (Please note: Bigger tab should be used for bigger dent because it has stronger traction, vice versa)
6. Align the center point of tab with the dent center point, then quickly put the tab on the dent and slightly press it. (Wait 3-5 minutes till it cools down with only a little temperature when it has strongest viscosity.)
7. Buckle the nut, screw it till the surface of the dent flattens or slightly bulges. Deal with this slowly and carefully.
8. If the center of some small dents is deeper than around, please use the rubber hammer to tap on the around part that will make the dent more smooth to process.
9. After repair, spray alcohol on the part covered by glue and remove it with a scraper.
10. Check the result; if not ideal, repeat the above steps till you get what you want.

*Notice:

1. Do not use a car charge glue gun if the dent is on the engine hood. Because you need to start the car, it will cause a high temperature, which will influence the glue stick's effect.
2. Do not repair under the blasing sun because the high temperature of the car body will influence the effect of the glue stick.
3. When applying the glue, remember to start from the center of the tab and in a circle inside and out, and make sure the glue is even and full on the tab.

[Tabs] Instruction

There are 2 kinds of tabs.

1. **Plastic tabs**
 - 1). To dissolve the attached impurity, the plastic tabs should be soaked for 3 hours with alcohol before use.
 - 2). Heat the glue sticks with the glue gun, and apply hot melt glue on the tab evenly with proper amount depending on its viscosity and car body condition.
 - 3). Put the tab with glue on the dent, slightly press it. Do not press fiercely to ensure a certain thickness of glue.
 - 4). Choose the right tabs though observing the shape and size of the dent. Choose thin tabs for cars with soft body and thin paint and thick tabs for cars with hard body and thick paint.
2. **Metal tabs**

The quality is the best; adhesive ability is the strongest; it can be used repeatedly; 6 size and shape is available.

Features:
A complete range of shapes and sizes are available to deal with all kinds of dents and it applies to all car body types.

[Glue Gun] Instruction

1. There are 2 types of glue guns, one is a vehicle glue gun, and the other is a 220V glue gun. The difference is the connector. The connector of the vehicle glue gun can directly connect with the car, while that of the 220V glue gun cannot.
2. The voltage of the vehicle glue gun is 12V; you can directly insert it into cigarette lighter, insert the glue stick, and then turn on the switch to start. Wait for 2-3 minutes till the glue stick melt and the temperature inside can reach to 160°C.
3. The 220V glue gun needs to be connected with power supply, insert the glue stick and then turn on the switch to start.

Features:

The 12V vehicle glue gun is our independent design. It is durable. The appearance is elegant and nozzle is bronze. The glue stick can melt fast. The power line is 2 meters long which is 0.5 meters longer than ordinary wires.

Q&A

- Q: Which dent can be repaired and which cannot?
A: The smooth and half dent can be 100% repaired, and the angular part needs more patience with different tools. The tiny dent which is hit by sharp object is difficult to repair. If the part with tiny dent can be removed or the back side of the dent can be contacted directly, you can directly deal with it with dent tester-LED line board or ordinary line board, tap down pen and tap down hammer. Remember never use a iron hammer or other hard objects to repair, because the paint will be damaged.
- Q: To what degree can the tool reach?
A: This repair tool can repair 70%-80% dents. The smooth and half dent can be well repaired. The angular dent, line dent and dent caused by sharp objects are difficult to repair. But you can still repair it by knocking the around part of the dent with a rubber hammer first. But it doesn't work if the paint has been damaged.
- Q: Is the operation easy?
A: It is very easy. Even a beginner without any experience can handle as long as he or she read and watch our image-text and video tutorial carefully.
- Q: If the glue doesn't work well, the viscosity is not enough, how to solve it?
A: 1. The glue works better in a sunny day and in the temperature of 20°C-28°C.
2. The viscosity of the glue is influenced by the humidity and temperature. Generally, the hot melt glue will dry within 2-5 minutes in summer and 1-3 minutes in a cold day. It depends on actual situation, sometimes 20 seconds is enough.
3. If the tab is off in the process of operating, it may be because the amount of glue is not enough or the temperature of car body is too high or your operation is not correct. The problem will be gone if you apply more glue, turn off the car engine, and then repeatedly operate.

Warm tips:

If the glue becomes fragile in an extremely cold day, you can apply hot water on the dent first, and then apply the glue.

Attention:

1. Glue sticks or repair tools bought from some local stores may fail to do the job as expected. They can't guarantee a good repair effect and may damage the paint. Our tools and glue sticks are professionally designed and applied to car body with years of practical experience. The paint won't be damaged and the repair effect is pretty good if you operate correctly.
2. If the paint of your car is not original, we suggest you not to buy our tools as it may damage the paint.

Notes :

If the product you received has quality problems or it is broken when you received or you find a shortage in number, please do not hesitate to tell us via photos or e-mails, we will reply you in time. Please read the instruction carefully before you use our product, and according to the instruction to operate it. If there is any question please feel free to contact us, we will arrange our technical staff to help you. Please give us a reasonable and fair feedback if you think our product is practical. It is really helpful to other person when they want to buy this product. You can not use the vehicle glue gun when there is dent on the hood need to repair, because the vehicle glue gun needs to start the car to charge it, and this action will cause the hood gets hot, if the hood get hot, the glue will be soft, and if the glue was soft, the viscosity will be weak, but except the place where its weather is extremely cold.

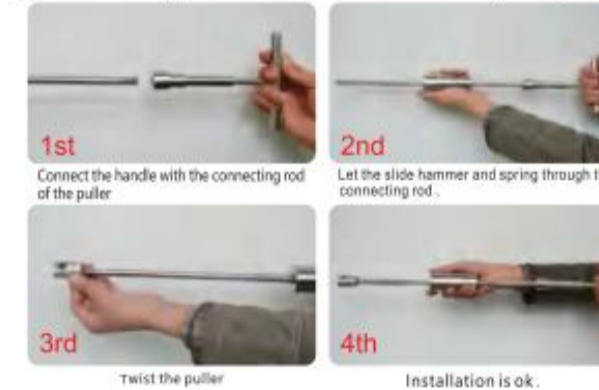
[How to operate the slide hammer dent puller]



Prepare the tools

You had better to clean the dent with alcohol and rag before repair.

[The assembly process for slide hammer dent puller]



[The assembly process for short T]



[The clean process for Glue Stick]



[Remark: slide hammer dent puller hereinafter referred to as "T puller"]



Kindly reminder:
If it is still unrepaired after above steps, you can repeat the steps several times till it is well repaired.
If the dent is repaired, but there's a bump on it, you can do as following steps:
1. Press the bump with your thumb continuously till it flattens.
2. If fail after the first step, you can use a tap down pen and aim at the bump, then knock it slightly with a rubber hammer. You can repeat till successful. (Please do not knock with too much force).



1. Clean the surface of the depression



2. Heat the glue stick with a glue gun and apply it to the puller tabs



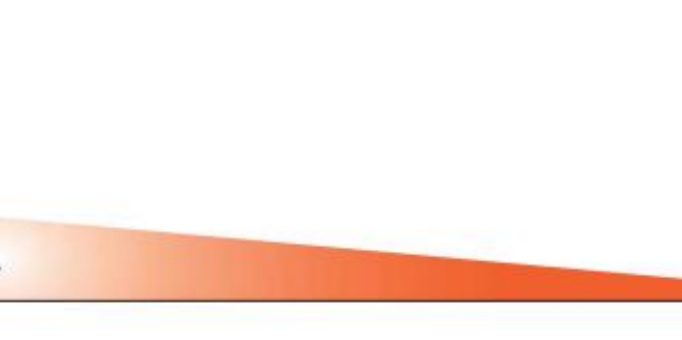
3. Adjust the height of the pull head to fit the puller tabs



4. Place the dent lifter



5. Attach the puller tabs to the depression, wait about 2 minutes



Product List

Model / zdjęcie	XPT9008	Nazwa pliku: XPT9009	XPT9010	XPT9011	Podaj adres e-mail podany przy użytkowniku				
Lista części i obrót									
Sczegół w instrukcje lery 7					1			1	1
Tabela numerowana								2	2
Łańcuch	1								
Poręcz	3								
Hak	3								
Łom	5								
Łom	10								
Łom			21						
Łom					10				
Łom									10
Klin czerwony					1				
Czerwona prosta łopata					1				
Młotek szlutowy		1	1	1	1	1	1	1	1
Młot naprawczy					1	1	1	1	1
Narzędzie do usuwania nagromadzonej szpindel					zestaw 7 szt.	zestaw 7 szt. 1		1 zestaw 7 szt.	zestaw 7 szt.
Złoty ściągacz wgniecień		1	1	1	1	1	1	1	1
Prostokąt do klepu		1	1	1	1	1	1	1	1
Klej w sztycy		12	12	20	12	12	10	15	
Zalotka plastikowa		24	24	34	36	54	66	54	
Rówek przewodu ściągacza				1 zestaw 6 szt.					
Statki na sprężym		1	1	1	1	1	1	1	1
Plótno		1	1						1
Plótno					1				
Torbki na narzędzia		2	2	2	2	2	2	2	2
Tabela numerowana	1	1	1	1	1	1	1	1	1
Długopis dociskowy							5		
Młotek		1	1	1	1	1	1	1	1
Kończynka długopisu Tap-down		1	1	1	1	1	1	1	1
Rękaw gumowy	8	8	8	8	8	8	8	8	8
Skróbak		2	1				2	1	2
Skróbak							1		
Reparacja	2	2	2	2	2	2	2	2	2
Tablica odblaskowa							1	1	1

Technical Support and E-Warranty Certificate
www.vevor.com/support
Made In China

To jest oryginalna instrukcja, proszę przeczytać wszystkie instrukcje w podręczniku

przed rozpoczęciem użytkowania należy dokładnie zapoznać się z treścią niniejszego Regulaminu. VEOR zastrzega sobie prawo do jednoznacznej interpretacji naszych instrukcja obsługi. Wygląd produktu podlega produkt, który otrzymałeś. Przepraszamy, że nie poinformujemy Cię ponownie, jeśli czy w naszym produkcie pojawiły się jakieś aktualizacje technologii lub oprogramowania.

WAŻNE ZABEZPIECZENIA



Zapisz te instrukcje. Przeczytaj wszystkie środki ostrożności i instrukcje. Rezhgad wszystkie Ważne Informacje o Bezpieczeństwie sekcja na początku tego dokumentu zawierająca cały tekst w podpozycjach w niej zawartych przed utworzeniem lub użyciem tego

produktu. Przed montażem, instalacją,

obsługi lub serwisowania tego produktu. Nieprzestrzeganie tych ostrzeżeń i instrukcje mogą spowodować śmierć, obrażenia ciała lub uszkodzenie cenna własność.

1. UTRZYMUJ MIEJSCE PRACY W CZYSTOŚCI I SUCHO.

Zagrazone, wilgotne i mokre miejsca pracy sprzyjają powstawaniu urazów.

2. TRZYMAĆ DZIECI Z DALA OD MIEJSCA PRACY.

Ten produkt nie jest zabawką. Nie pozwalaj dzieciom używać lub przebywać w pobliżu tego produktu.

3. PRZECHOWYWAJ NIEUŻYWANY SPRZĘT.

Gdy nie są używane, narzędzia i sprzęt należy przechowywać w suchym miejscu, zapobiegać rdzewieniu. Zawsze zamykaj narzędzia i sprzęt i trzymaj je poza zasięgiem dzieci.

4. NIE UŻYWAJ TEGO PRODUKTU, JEŚLI ZNAJDUJESZ SIĘ POD WPŁYWEM ALKOHOL LUB NARKOTYKI.

Przeczytaj ostrzeżenia na receptach, aby określić, czy Twój osąd lub refleks są prawidłowe. są upośledzone podczas przyjmowania narkotyków. Jeśli masz jakiegokolwiek wątpliwości, nie próbuj używać tego produkt.

5. BEZPIECZNA EKSPLOATACJA.

a. Noś okulary ochronne zatwierdzone przez ANSI i wytrzymałe rękawice robocze.

podczas użytkowania.

b. Podczas pracy z tym urządzeniem należy używać obuwia antypoślizgowego lub obuwia roboczego. produkt. Nie należy nosić luźnej odzieży ani biżuterii, ponieważ mogą one zostać wciągnięte ruchomych części. Noś ochronną osłonę włosów, aby zapobiec ich wypadaniu wpłątanie się w ruchome części. Jeśli nosisz koszulę z długim rękawem, podwiń rękawy powyżej łokci.

6. NIE PRZESADZAJ.

Zawsze zachowuj odpowiednią postawę i równowagę, aby uniknąć potknięcia, upadku i cofnięcia się. urazy itp.

7. ZACHOWAJ CZUJNOŚĆ.

Uważaj, co robisz, przez cały czas. Używaj zdrowego rozsądku. Nie używaj tego produktu, gdy jesteś zmęczony lub nie możesz skupić się na wykonywanej pracy.

8. SPRAWDŹ, CZY NIE MA USZKODZONYCH CZĘŚCI.

Przed użyciem tego produktu należy dokładnie sprawdzić, czy będzie on działał prawidłowo i wykonywać swoją zamierzoną funkcję. Sprawdź, czy nie ma uszkodzonych części i innych warunki, które mogą mieć wpływ na działanie tego produktu. Wymień lub napraw uszkodzone lub zużyte części należy natychmiast wymienić.

9. CZĘŚCI ZAMIENNE I AKCESORIA.

Podczas serwisowania należy używać wyłącznie identycznych części zamiennych. Należy używać wyłącznie akcesoriów przeznaczone do tego produktu. Zatwierdzone akcesoria są dostępne u dystrybutora.

10. UTRZYMUJ TEN PRODUKT STARANNIE.

Utrzymuj to narzędzie w czystości i suchości, a ostrza piły w czystości i naostrz je. lepsza i bezpieczniejsza wydajność.

11. KONSERWACJA:

Ze względów bezpieczeństwa należy regularnie wykonywać czynności serwisowe i konserwacyjne przez wykwalifikowanego technika.

12. UŻYJ ODPOWIEDNIEGO PRODUKTU DO ODPOWIEDNIEGO ZADANIA.

a. Używać wyłącznie zgodnie z przeznaczeniem.

b. Istnieją pewne zastosowania, do których ten produkt został zaprojektowany. Nie używać małego sprzętu, narzędzi lub osprzętu do wykonywania prac przemysłowych na większą skalę sprzętu, narzędzi lub osprzętu. Nie należy używać tego produktu w celu co nie było zamierzone

13. Instrukcje bezpieczeństwa dotyczące pistoletu do kleju na gorąco

Podczas korzystania z pistoletu do klejenia na gorąco należy zawsze zachowywać podstawowe środki ostrożności. następująco:

a. Przeczytaj wszystkie instrukcje.

b. Sprawdź, czy napięcie podane na tabliczce znamionowej odpowiada napięciu sieci lokalnej przed podłączeniem urządzenia do zasilania sieciowego. c. Nie pozostawiaj urządzenia bez nadzoru, gdy jest podłączone do zasilania sieciowego.

d. Nie

zanurzaj urządzenia w wodzie ani innych płynach.

Należy koniecznie odłączyć przewód zasilający po użyciu urządzenia, przed jego czyszczeniem i podczas naprawy. e. Wymagany jest ścisły nadzór podczas korzystania z urządzenia w pobliżu dzieci.

f. Nigdy nie pozostawiaj urządzenia w zasięgu dzieci. g. Naprawy urządzeń elektrycznych powinny być wykonywane wyłącznie przez wykwalifikowany personel. elektryka. Niewłaściwe naprawy mogą narazić użytkownika na poważne ryzyko. h. To urządzenie jest przeznaczone wyłącznie do użytku domowego i nie powinno być używane do cele komercyjne.

i. Nie należy używać urządzenia z uszkodzoną wtyczką lub przewodem, po awarii lub po upuszczeniu lub uszkodzeniu w jakikolwiek sposób.

j. Nie używaj urządzenia do celów innych niż te, do których jest przeznaczone. k. Nie dotykaj gorących powierzchni, nie używaj uchwytów ani gałek podczas pracy z urządzeniem.

l. Trzymaj urządzenie i jego przewód poza zasięgiem dzieci poniżej 8 roku życia.

urządzenie nie jest przeznaczone do użytku przez osoby (w tym dzieci) o ograniczonej sprawności ruchowej zdolności fizyczne, sensoryczne lub umysłowe albo brak doświadczenia i wiedzy, chyba że zapewniono im nadzór lub instruktaż dotyczący korzystania z urządzenia

urządzenia przez osobę odpowiedzialną za ich bezpieczeństwo. Dzieci powinny być pod nadzorem aby mieć pewność, że nie będą bawić się urządzeniem. m. Jeśli

przewód zasilający jest uszkodzony, musi zostać wymieniony przez producenta, jego agenta serwisowego lub podobnie wykwalifikowaną osobę w celu uniknięcia zagrożenia.



Prawidłowa utylizacja pistoletu do kleju na gorąco: Ten produkt podlega przepisom Dyrektywy Europejskiej 2012/19/WE. Symbol przedstawiający przekreślony kosz na kółkach oznacza, że produkt wymaga oddzielnej zbiórki odpadów w Unii Europejskiej. Dotyczy to produktu i wszystkich akcesoriów oznaczonych tym symbolem. Produktów oznaczonych w ten sposób nie można wyrzucać razem ze zwykłymi odpadami domowymi, ale należy je oddać do punktu zbiórki w celu recyklingu urządzeń elektrycznych i elektronicznych.

Adres: Baoshanqu Shuangchenglu 803long 11hao 1602A-1609shi Szanghaj Importowane do AUS:

SIHAO PTY LTD. 1 ROKEVA STREETEASTWOOD NSW 2122 Australia Importowane do USA: Sanven Technology Ltd.

Suite 250, 9166 Anaheim Place, Rancho Cucamonga, CA 91730



Grupa Pooledas Ltd.
Jednostka 5 Dom Alberta Edwarda, Pawilony
Preston, Wielka Brytania



SHUNSHUN GmbH
Römeräcker 9 Z2021, 76351 Linkenheim-
Hochstetten, Niemcy

Wyprodukowano w Chinach

VEVOR[®]
TOUGH TOOLS, HALF PRICE

Wsparcie techniczne i certyfikat gwarancji elektronicznej
www.vevor.com/support

VEVOR[®]

TOUGH TOOLS, HALF PRICE

Technical Support and E-Warranty Certificate
www.vevor.com/support

Dent Repair Tool Kit

We continue to be committed to provide you tools with competitive price. "Save Half", "Half Price" or any other similar expressions used by us only represents an estimate of savings you might benefit from buying certain tools with us compared to the major top brands and does not necessarily mean to cover all categories of tools offered by us. You are kindly reminded to verify carefully when you are placing an order with us if you are actually saving half in comparison with the top major brands.

[Dent Repair Puller] Instruction

1. Find the dent and clean it with a rag and alcohol.
2. Observe the shape and size of the dent, estimate where to pull the dent out, and mark it with a marking pen.
3. Then clean the glue stick with alcohol to remove the grease on its surface.
4. Insert the glue stick into the glue gun and connect the gun to the power supply, then heat it for about 2-3 minutes till the hot melt glue starts to spill out from the gun.
5. Choose a tab that matches the shape and size of the dent, apply hot melt glue on the tab with the glue gun, remember to start from the center of the tab and in a circle inside and out, and make sure the glue is even and full on the tab. (Please note: Bigger tab should be used for bigger dent because it has stronger traction, vice versa)
6. Align the center point of tab with the dent center point, then quickly put the tab on the dent and slightly press it. (Wait 3-5 minutes till it cools down with only a little temperature when it has strongest viscosity.)
7. Buckle the puller till it is fastened, hold the handle of the puller, impact upwards, gradually increase the force, repeat several times till the surface of the dent flattens or slightly bulges (do not impact too fiercely to avoid the tab off the car body)
8. If the center of some small dents is deeper than around, please use the rubber hammer to tap on the around part, that will make the dent more smooth to process.
9. After repair, spray alcohol on the part covered by glue and remove it with a scraper.
10. Check the result; if not ideal, repeat the above steps till you get what you want.

[Glue sticks] Instruction

Select correct glue sticks:

1. Transparent glue stick: For Japanese cars which have thin paint. Used for all natural temperature.
2. Yellow glue stick: For European and American cars which have thick paint. And it is a better choice to deal with small dents.
3. Black glue stick: For all cars. And the effect is better in the temperature of 20°C-28°C.

[Dent Repair Lifter] Instruction

1. Find the dent and clean it with a rag and alcohol.
2. Observe the shape and size of the dent, estimate where to pull the dent out, and mark it with a marking pen.
3. Then clean the glue stick with alcohol to remove the grease on its surface.
4. Insert the glue stick into the glue gun and connect the gun to the power supply, then heat it about for 2-3 minutes till the hot melt glue starts to spill out from the gun.
5. Choose a tab that matches the shape and size of the dent; apply hot melt glue on the tab with the glue gun, remember to start from the center of the tab and in a circle inside and out, and make sure the glue is even and full on the tab. (Please note: Bigger tab should be used for bigger dent because it has stronger traction, vice versa)
6. Align the center point of tab with the dent center point, and then quickly put the tab on the dent and slightly press it. (Wait 3-5 minutes till it cools down with only a little temperature when it has strongest viscosity.)
7. Buckle the lifter till it is fastened, hold the handle of the lifter, gradually increase the force, repeat several times till the surface of the dent flattens or slightly bulges. Deal with this slowly and carefully.
8. If the center of some small dents is deeper than around, please use the rubber hammer to tap on the around part that will make the dent more smooth to process.

[Dent Repair Bridge] Instruction

1. Find the dent and clean it with a rag and alcohol.
2. Observe the shape and size of the dent, estimate where to pull the dent out, and mark it with a marking pen.
3. Then clean the glue stick with alcohol to remove the grease on its surface.
4. Insert the glue stick into the glue gun and connect the gun to the power supply, then heat it about for 2-3 minutes till the hot melt glue starts to spill out from the gun.
5. Choose a tab that matches the shape and size of the dent; apply hot melt glue on the tab with the glue gun, remember to start from the center of the tab and in a circle inside and out, and make sure the glue is even and full on the tab. (Please note: Bigger tab should be used for bigger dent because it has stronger traction, vice versa)
6. Align the center point of tab with the dent center point, then quickly put the tab on the dent and slightly press it. (Wait 3-5 minutes till it cools down with only a little temperature when it has strongest viscosity.)
7. Buckle the nut, screw it till the surface of the dent flattens or slightly bulges. Deal with this slowly and carefully.
8. If the center of some small dents is deeper than around, please use the rubber hammer to tap on the around part that will make the dent more smooth to process.
9. After repair, spray alcohol on the part covered by glue and remove it with a scraper.
10. Check the result; if not ideal, repeat the above steps till you get what you want.

***Notice:**

1. Do not use a car charge glue gun if the dent is on the engine hood. Because you need to start the car, it will cause a high temperature, which will influence the glue stick's effect.
2. Do not repair under the blating sun because the high temperature of the car body will influence the effect of the glue stick.
3. When applying the glue, remember to start from the center of the tab and in a circle inside and out, and make sure the glue is even and full on the tab.

[Tabs] Instruction

There are 2 kinds of tabs.

1. Plastic tabs

- 1). To dissolve the attached impurity, the plastic tabs should be soaked for 3 hours with alcohol before use.
- 2). Heat the glue sticks with the glue gun, and apply hot melt glue on the tab evenly with proper amount depending on its viscosity and car body condition.
- 3). Put the tab with glue on the dent, slightly press it. Do not press fiercely to ensure a certain thickness of glue.
- 4). Choose the right tabs though observing the shape and size of the dent. Choose thin tabs for cars with soft body and thin paint and thick tabs for cars with hard body and thick paint.

2. Metal tabs

The quality is the best, adhesive ability is the strongest; it can be used repeatedly; 6 size and shape is available.

Features:

A complete range of shapes and sizes are available to deal with all kinds of dents and it applies to all car body types.

[Glue Gun] Instruction

1. There are 2 types of glue guns, one is a vehicle glue gun, and the other is a 220V glue gun. The difference is the connector. The connector of the vehicle glue gun can directly connect with the car, while that of the 220V glue gun cannot.
2. The voltage of the vehicle glue gun is 12V; you can directly insert it into cigarette lighter, insert the glue stick, and then turn on the switch to start. Wait for 2-3 minutes till the glue stick melt and the temperature inside can reach to 160°C.
3. The 220V glue gun needs to be connected with power supply, insert the glue stick and then turn on the switch to start.

Features:

The 12V vehicle glue gun is our independent design. It is durable. The appearance is elegant and nozzle is bronze. The glue stick can melt fast. The power line is 2 meters long which is 0.5 meters longer than ordinary wires.

Q&A

Q: Which dent can be repaired and which cannot?

A: The smooth and hail dent can be 100% repaired, and the angular part needs more patience with different tools. The tiny dent which is hit by sharp object is difficult to repair. If the part with tiny dent can be removed or the back side of the dent can be contacted directly, you can directly deal with it with dent tester-LED line board or ordinary line board, tap down pen and tap down hammer. Remember never use a iron hammer or other hard objects to repair, because the paint will be damaged.

Q: To what degree can the tool reach?

A: This repair tool can repair 70%-80% dents. The smooth and hail dent can be well repaired. The angular dent, line dent and dent caused by sharp objects are difficult to repair. But you can still repair it by knocking the around part of the dent with a rubber hammer first. But it doesn't work if the paint has been damaged.

Q: Is the operation easy?

A: It is very easy. Even a beginner without any experience can handle as long as he or she read and watch our image-text and video tutorial carefully.

Q: If the glue doesn't work well, the viscosity is not enough, how to solve it?

A: 1. The glue works better in a sunny day and in the temperature of 20°C-28°C.
2. The viscosity of the glue is influenced by the humidity and temperature. Generally, the hot melt glue will dry within 2-5 minutes in summer and 1-3 minutes in a cold day. It depends on actual situation, sometimes 20 seconds is enough.
3. If the tab is off in the process of operating, it may be because the amount of glue is not enough or the temperature of car body is too high or your operation is not correct. The problem will be gone if you apply more glue, turn off the car engine, and then repeatedly operate.

Warm tips:

If the glue becomes fragile in an extremely cold day, you can apply hot water on the dent first, and then apply the glue.

Attention:

1. Glue sticks or repair tools bought from some local stores may fail to do the job as expected. They can't guarantee a good repair effect and may damage the paint. Our tools and glue sticks are professionally designed and applied to car body with years of practical experience. The paint won't be damaged and the repair effect is pretty good if you operate correctly.
2. If the paint of your car is not original, we suggest you not to buy our tools as it may damage the paint.

Notes :

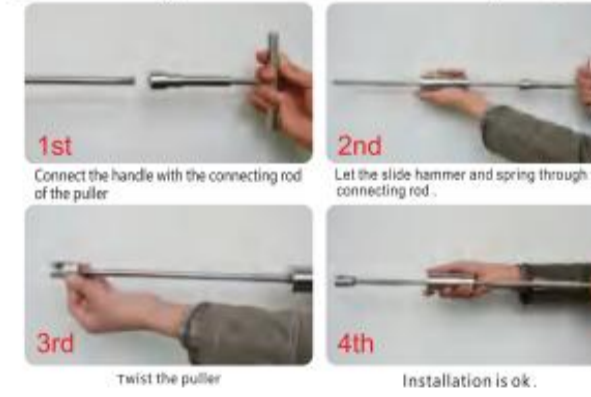
If the product you received has quality problems or it is broken when you received or you find a shortage in number, please do not hesitate to tell us via photos or e-mails, we will reply you in time. Please read the instruction carefully before you use our product, and according to the instruction to operate it. If there is any question please feel free to contact us, we will arrange our technical staff to help you. Please give us a reasonable and fair feedback if you think our product is practical. It is really helpful to other person when they want to buy this product. You can not use the vehicle glue gun when there is dent on the hood need to repair, because the vehicle glue gun needs to start the car to charge it, and this action will cause the hood gets hot, if the hood get hot, the glue will be soft, and if the glue was soft, the viscosity will be weak, but except the place where its weather is extremely cold.

[how to operate the slide hammer dent puller]



Prepare the tools
You had better to clean the dent with alcohol and rag before repair.

[The assembly process for slide hammer dent puller]



1st Connect the handle with the connecting rod of the puller
2nd Let the slide hammer and spring through the connecting rod
3rd twist the puller
4th Installation is ok.

[The assembly process for short T]



1 Tear down the dent repair puller as picture
2 Twist the handle and the connecting rod and make from one
3 Installation is ok.

[The clean process for Glue Stick]



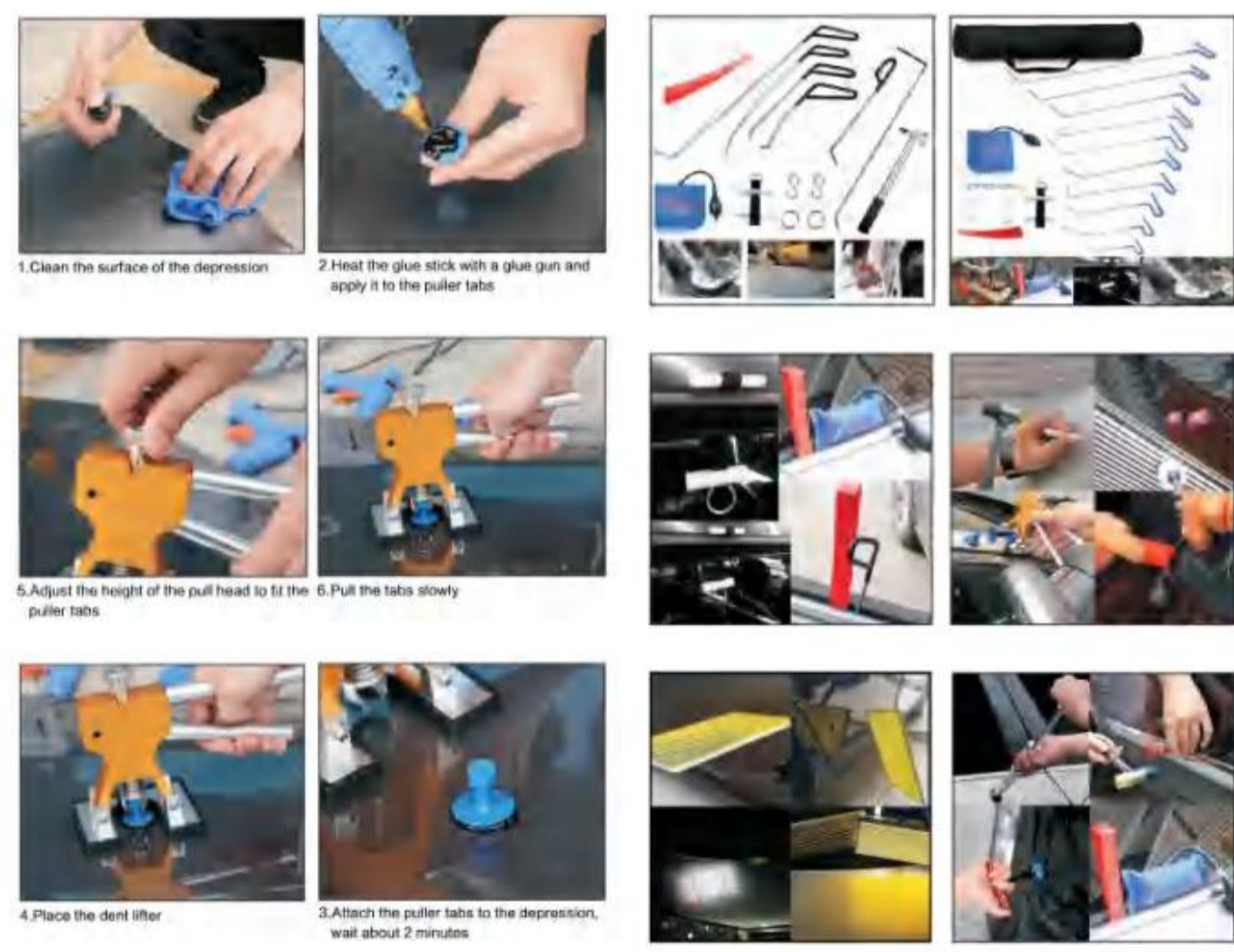
1 Prepare the glue stick and alcohol and rag
2 Spray the alcohol on the glue stick
3 Wipe the glue stick up with rag
4 Insert the glue stick into the glue gun and prepare to charge it

[Remark: slide hammer dent puller hereinafter referred to as "T puller"]



1. Clean the dent with wet rag, and mark it with marking pen.
2. Insert the glue stick into the glue gun and charge it by 3-5 minutes.
3. Choose a tab that matches the shape and size of the dent. (Please note: Bigger tab should be used for bigger dent because it has stronger traction, vice versa)
4. Apply hot melt glue on the tab with the glue gun, remember to start from the center of the tab and in a circle inside and out, and make sure the glue is even and full on the tab.
5. Align the center point of tab with the dent center point, then quickly put the tab on the dent and slightly press it. (Wait 3-5 minutes till it cools down with only a little temperature when it has strongest viscosity.)
6. Touch the glue with your hand. When it cools down with only a little temperature, buckle the tab with T puller and fasten its position.
7. Hold the handle to impact upwards gradually till its surface flattens.
8. Spray the alcohol on the residual glue, and then clean it up with the scraper.
Before repair After repair

Kindly reminder:
If it is still unrepaired after above steps, you can repeat the steps several times till it is well repaired.
If the dent is repaired, but there's a bump on it, you can do as following steps:
1. Press the bump with your thumb continuously till it flattens.
2. If fail after the first step, you can use a tap down pen and aim at the bump, then knock it slightly with a rubber hammer. You can repeat till successful. (Please do not knock with too much force).



1. Clean the surface of the depression
2. Heat the glue stick with a glue gun and apply it to the puller tabs
3. Adjust the height of the pull head to fit the puller tabs
4. Place the dent lifter
5. Attach the puller tabs to the depression, wait about 2 minutes

VEVOR[®]

TOUGH TOOLS, HALF PRICE

Product List

Model/Labeling	XPT9008	XPT9009	XPT9010	XPT9011	XPT9012	XPT9013	XPT9014	XPT9015	XPT9016	XPT9017	XPT9018
T-voornige trekker											
Stoffen tas											
Ketting											
Ring											
Geschud											
Koervoet											
Koervoet											
Koervoet											
Koervoet											
Rode wig											
Rode rechte schep											
Gijzamer											
Reparatiehamer											
Brug deuk trekker											
Gouden deuktrekker											
Lijmpistool											
Lijmstift											
Kunststof lipje											
Groef van de trekkerlijn											
Spuutflus											
Lap											
Lap											
Gereedschapstas											
Gereedschapstas											
Pen met tappen											
Hamer											
Punt van de Tap-down Pen											
Rubberen huls											
Schijper											
Schraper											
Reflectorband											

Technical Support and E-Warranty Certificate
www.vevor.com/support
Made In China

Dit is de originele instructie, lees alle instructies in de handleiding zorgvuldig door voordat u gaat werken. VEVOR behoudt zich een duidelijke interpretatie van onze gebruikershandleiding. Het uiterlijk van het product is onderworpen aan de product dat u hebt ontvangen. Vergeef ons dat we u niet opnieuw zullen informeren als er technologische of software-updates voor ons product zijn.

BELANGRIJKE VEILIGHEIDSMATREGELEN



Bewaar deze instructies. Lees alle voorzorgsmaatregelen en instructies. Rezhgad de gehele Belangrijke Veiligheidsinformatie sectie aan het begin van dit document inclusief alle tekst onder subkoppen daarin vóór de instelling of het gebruik van deze

product. Lees en begrijp deze volledige handleiding voordat u het product monteert, installeert,

het bedienen of onderhouden van dit product. Het niet opvolgen van deze waarschuwingen en instructies kunnen de dood, persoonlijk letsel of schade aan uw kind veroorzaken. waardevol bezit.

1. HOUD DE WERKPLEK SCHOON EN DROOG.

Rommelige, vochtige of natte werkplekken zijn een bron van verwondingen.

2. HOUD KINDEREN UIT DE BUURT VAN DE WERKPLEK.

Dit product is geen speelgoed. Laat kinderen dit product niet gebruiken of in de buurt ervan komen.

3. SLA APPARATUUR DIE NIET GEBRUIKT WORDT OP.

Wanneer u gereedschap en apparatuur niet gebruikt, dient u deze op een droge plaats op te bergen. roest remmen. Berg gereedschap en apparatuur altijd op en houd ze buiten bereik van kinderen.

4. GEBRUIK DIT PRODUCT NIET ALS U ONDER INVLOED BENT VAN ALCOHOL OF DRUGS.

Lees de waarschuwingslabels op recepten om te bepalen of uw oordeel of reflexen worden beïnvloed tijdens het gebruik van drugs. Als er enige twijfel is, probeer dit dan niet te gebruiken product.

5. VEILIG GEBRUIK.

a. Draag een ANSI-goedgekeurde veiligheidsbril en stevige werkhandschoenen tijdens gebruik.

b. Bij het werken met deze machine moeten antislipschoenen of veiligheidsschoenen worden gedragen. product. Draag geen losse kleding of sieraden, omdat deze in het product kunnen blijven haken. bewegende delen. Draag een beschermende haarbedekking om te voorkomen dat lang haar vast komen te zitten in bewegende delen. Als u een shirt met lange mouwen draagt, rolt u de mouwen op boven de ellebogen.

6. GA NIET TE VER.

Zorg te allen tijde voor een goede houding en evenwicht om struikelen, vallen en terugvallen te voorkomen. letsel, enz.

7. BLIJF ALERT.

Let altijd op wat je doet. Gebruik je gezonde verstand. Gebruik dit niet product wanneer u moe bent of afgeleid van uw werk.

8. CONTROLEER OP BESCHADIGDE ONDERDELEN.

Controleer voor gebruik van dit product zorgvuldig of het goed werkt en de beoogde functie uitvoeren. Controleer op beschadigde onderdelen en andere omstandigheden die de werking van dit product kunnen beïnvloeden. Vervangen of repareren beschadigde of versleten onderdelen onmiddellijk.

9. VERVANGENDE ONDERDELEN EN ACCESSOIRES.

Gebruik bij onderhoud alleen identieke vervangingsonderdelen. Gebruik alleen accessoires bedoeld voor dit product. Goedgekeurde accessoires zijn verkrijgbaar bij de distributeur.

10. ONDERHOUD DIT PRODUCT MET ZORG.

Houd dit gereedschap schoon en droog, en houd de zaagbladen schoon en scherp voor betere en veiligere prestaties.

11. ONDERHOUD:

Voor uw veiligheid moeten service en onderhoud regelmatig worden uitgevoerd door een gekwalificeerde technicus.

12. GEBRUIK HET JUISTE PRODUCT VOOR DE JUISTE KLUS.

a. Alleen gebruiken zoals bedoeld.

b. Er zijn bepaalde toepassingen waarvoor dit product is ontworpen.

gebruik kleine apparatuur, gereedschappen of hulpstukken om het werk van grotere industriële te doen apparatuur, gereedschappen of hulpstukken. Gebruik dit product niet voor een doel wat niet de bedoeling was

13. Veiligheidsinstructies voor het lijmpistool met smeltlijm

Bij het gebruik van uw lijmpistool met smeltlijm moeten altijd de basisveiligheidsmaatregelen in acht worden genomen. gevolgd:

a. Lees alle instructies. b.

Controleer of de spanning die op het typeplaatje staat, overeenkomt met die van de

c. Laat het apparaat niet onbeheerd achter terwijl het op het lichtnet is aangesloten.

d. Dompel

het apparaat niet onder in water of andere vloeistoffen.

Het is absoluut noodzakelijk om de stekker uit het stopcontact te halen nadat het apparaat is gebruikt, voordat het wordt schoongemaakt en tijdens reparaties. e. Er

is nauwlettend toezicht vereist wanneer dit apparaat in de buurt van kinderen wordt gebruikt.

f. Laat het apparaat nooit binnen bereik van kinderen. g. Laat reparaties

aan elektrische apparaten alleen uitvoeren door een gekwalificeerde vakman.

elektricien. Onjuiste reparaties kunnen de gebruiker ernstig in gevaar brengen. h. Dit

apparaat is uitsluitend bedoeld voor huishoudelijk gebruik en mag niet worden gebruikt voor commerciële doeleinden.

i. Gebruik het apparaat niet met een beschadigde stekker of snoer, na een storing, of nadat het is gevallen of op enigerlei wijze is beschadigd.

j. Gebruik het apparaat niet voor andere doeleinden dan waarvoor het bedoeld is. k. Raak

geen hete oppervlakken aan en gebruik geen handgrepen of knoppen wanneer u met het apparaat werkt.

l. Houd het apparaat en het snoer buiten bereik van kinderen jonger dan 8 jaar.

Het apparaat is niet bedoeld voor gebruik door personen (inclusief kinderen) met een verminderd bewegingsvermogen.

fysieke, zintuiglijke of geestelijke vermogens, of een gebrek aan ervaring en kennis, tenzij zij toezicht of instructie hebben gekregen met betrekking tot het gebruik van de

apparaat door een persoon die verantwoordelijk is voor hun veiligheid. Kinderen moeten onder toezicht staan om ervoor te zorgen dat ze niet met het apparaat spelen. m. Als het

netsnoer beschadigd is, moet het door de fabrikant worden vervangen, zijn

serviceagent of personen met vergelijkbare kwalificaties om gevaar te voorkomen.



Correcte verwijdering van Hot Melt Glue Gun:

Dit product is onderworpen aan de bepalingen van de Europese richtlijn 2012/19/EG. Het symbool met een doorgestreepte afvalbak geeft aan dat het product in de Europese Unie gescheiden afvalinzameling vereist. Dit geldt voor het product en alle accessoires die met dit symbool zijn gemarkeerd.

Producten die als zodanig zijn gemarkeerd, mogen niet met het normale huishoudelijke afval worden weggegooid, maar moeten worden ingeleverd bij een inzamelpunt voor recycling van elektrische en elektronische apparaten.

Adres: Baoshanqu Shuangchenglu 803long 11hao 1602A-1609shi Shanghai **Geïmporteerd naar AUS:**

SIHAO PTY LTD. 1 ROKEVA STREETEASTWOOD NSW 2122 Australië **Geïmporteerd naar VS:** Sanven Technology

Ltd. Suite 250, 9166 Anaheim Place, Rancho Cucamonga, CA 91730



Pooledas Groep Ltd
Unit 5 Albert Edward House, De Paviljoens
Preston, Verenigd Koninkrijk



SHUNSHUN GmbH
Römeräcker 9 Z2021, 76351 Linkenheim-
Hochstetten, Duitsland

Gemaakt in China

VEVOR[®]
TOUGH TOOLS, HALF PRICE

Technische ondersteuning en e-garantiecertificaat
www.vevor.com/support

VEVOR[®]

TOUGH TOOLS, HALF PRICE

Technical Support and E-Warranty Certificate
www.vevor.com/support

Dent Repair Tool Kit

We continue to be committed to provide you tools with competitive price.
"Save Half", "Half Price" or any other similar expressions used by us only represents an estimate of savings you might benefit from buying certain tools with us compared to the major top brands and does not necessarily mean to cover all categories of tools offered by us. You are kindly reminded to verify carefully when you are placing an order with us if you are actually saving half in comparison with the top major brands.

[Dent Repair Puller] Instruction

1. Find the dent and clean it with a rag and alcohol.
2. Observe the shape and size of the dent, estimate where to pull the dent out, and mark it with a marking pen.
3. Then clean the glue stick with alcohol to remove the grease on its surface.
4. Insert the glue stick into the glue gun and connect the gun to the power supply, then heat it for about 2-3 minutes till the hot melt glue starts to spill out from the gun.
5. Choose a tab that matches the shape and size of the dent, apply hot melt glue on the tab with the glue gun, remember to start from the center of the tab and in a circle inside and out, and make sure the glue is even and full on the tab. (Please note: Bigger tab should be used for bigger dent because it has stronger traction, vice versa)
6. Align the center point of tab with the dent center point, then quickly put the tab on the dent and slightly press it. (Wait 3-5 minutes till it cools down with only a little temperature when it has strongest viscosity.)
7. Buckle the puller till it is fastened, hold the handle of the puller, impact upwards, gradually increase the force, repeat several times till the surface of the dent flattens or slightly bulges (do not impact too fiercely to avoid the tab off the car body)
8. If the center of some small dents is deeper than around, please use the rubber hammer to tap on the around part, that will make the dent more smooth to process.
9. After repair, spray alcohol on the part covered by glue and remove it with a scraper.
10. Check the result; if not ideal, repeat the above steps till you get what you want.

[Glue sticks] Instruction

Select correct glue sticks:

1. Transparent glue stick: For Japanese cars which have thin paint. Used for all natural temperature.
2. Yellow glue stick: For European and American cars which have thick paint. And it is a better choice to deal with small dents.
3. Black glue stick: For all cars. And the effect is better in the temperature of 20°C-28°C.

[Dent Repair Lifter] Instruction

1. Find the dent and clean it with a rag and alcohol.
2. Observe the shape and size of the dent, estimate where to pull the dent out, and mark it with a marking pen.
3. Then clean the glue stick with alcohol to remove the grease on its surface.
4. Insert the glue stick into the glue gun and connect the gun to the power supply, then heat it about for 2-3 minutes till the hot melt glue starts to spill out from the gun.
5. Choose a tab that matches the shape and size of the dent; apply hot melt glue on the tab with the glue gun, remember to start from the center of the tab and in a circle inside and out, and make sure the glue is even and full on the tab. (Please note: Bigger tab should be used for bigger dent because it has stronger traction, vice versa)
6. Align the center point of tab with the dent center point, and then quickly put the tab on the dent and slightly press it. (Wait 3-5 minutes till it cools down with only a little temperature when it has strongest viscosity.)
7. Buckle the lifter till it is fastened, hold the handle of the lifter, gradually increase the force, repeat several times till the surface of the dent flattens or slightly bulges. Deal with this slowly and carefully.
8. If the center of some small dents is deeper than around, please use the rubber hammer to tap on the around part that will make the dent more smooth to process.

[Dent Repair Bridge] Instruction

1. Find the dent and clean it with a rag and alcohol.
2. Observe the shape and size of the dent, estimate where to pull the dent out, and mark it with a marking pen.
3. Then clean the glue stick with alcohol to remove the grease on its surface.
4. Insert the glue stick into the glue gun and connect the gun to the power supply, then heat it about for 2-3 minutes till the hot melt glue starts to spill out from the gun.
5. Choose a tab that matches the shape and size of the dent; apply hot melt glue on the tab with the glue gun, remember to start from the center of the tab and in a circle inside and out, and make sure the glue is even and full on the tab. (Please note: Bigger tab should be used for bigger dent because it has stronger traction, vice versa)
6. Align the center point of tab with the dent center point, then quickly put the tab on the dent and slightly press it. (Wait 3-5 minutes till it cools down with only a little temperature when it has strongest viscosity.)
7. Buckle the nut, screw it till the surface of the dent flattens or slightly bulges. Deal with this slowly and carefully.
8. If the center of some small dents is deeper than around, please use the rubber hammer to tap on the around part that will make the dent more smooth to process.
9. After repair, spray alcohol on the part covered by glue and remove it with a scraper.
10. Check the result; if not ideal, repeat the above steps till you get what you want.

***Notice:**

1. Do not use a car charge glue gun if the dent is on the engine hood. Because you need to start the car, it will cause a high temperature, which will influence the glue stick's effect.
2. Do not repair under the blating sun because the high temperature of the car body will influence the effect of the glue stick.
3. When applying the glue, remember to start from the center of the tab and in a circle inside and out, and make sure the glue is even and full on the tab.

[Tabs] Instruction

There are 2 kinds of tabs.

1. Plastic tabs

- 1). To dissolve the attached impurity, the plastic tabs should be soaked for 3 hours with alcohol before use.
- 2). Heat the glue sticks with the glue gun, and apply hot melt glue on the tab evenly with proper amount depending on its viscosity and car body condition.
- 3). Put the tab with glue on the dent, slightly press it. Do not press fiercely to ensure a certain thickness of glue.
- 4). Choose the right tabs though observing the shape and size of the dent. Choose thin tabs for cars with soft body and thin paint and thick tabs for cars with hard body and thick paint.

2. Metal tabs

The quality is the best, adhesive ability is the strongest; it can be used repeatedly; 6 size and shape is available.

Features:
A complete range of shapes and sizes are available to deal with all kinds of dents and it applies to all car body types.

[Glue Gun] Instruction

1. There are 2 types of glue guns, one is a vehicle glue gun, and the other is a 220V glue gun. The difference is the connector. The connector of the vehicle glue gun can directly connect with the car, while that of the 220V glue gun cannot.
2. The voltage of the vehicle glue gun is 12V, you can directly insert it into cigarette lighter, insert the glue stick, and then turn on the switch to start. Wait for 2-3 minutes till the glue stick melt and the temperature inside can reach to 160°C.
3. The 220V glue gun needs to be connected with power supply, insert the glue stick and then turn on the switch to start.

Features:
The 12V vehicle glue gun is our independent design. It is durable. The appearance is elegant and nozzle is bronze. The glue stick can melt fast. The power line is 2 meters long which is 0.5 meters longer than ordinary wires.

Q&A

Q: Which dent can be repaired and which cannot?
A: The smooth and half dent can be 100% repaired, and the angular part needs more patience with different tools. The tiny dent which is hit by sharp object is difficult to repair. If the part with tiny dent can be removed or the back side of the dent can be contacted directly, you can directly deal with it with dent tester-LED line board or ordinary line board, tap down pen and tap down hammer. Remember never use a iron hammer or other hard objects to repair, because the paint will be damaged.

Q: To what degree can the tool reach?
A: This repair tool can repair 70%-80% dents. The smooth and half dent can be well repaired. The angular dent, line dent and dent caused by sharp objects are difficult to repair. But you can still repair it by knocking the around part of the dent with a rubber hammer first. But it doesn't work if the paint has been damaged.

Q: Is the operation easy?
A: It is very easy. Even a beginner without any experience can handle as long as he or she read and watch our image-text and video tutorial carefully.

Q: If the glue doesn't work well, the viscosity is not enough, how to solve it?
A: 1. The glue works better in a sunny day and in the temperature of 20°C-28°C.
2. The viscosity of the glue is influenced by the humidity and temperature. Generally, the hot melt glue will dry within 2-5 minutes in summer and 1-3 minutes in a cold day. It depends on actual situation, sometimes 20 seconds is enough.
3. If the tab is off in the process of operating, it may be because the amount of glue is not enough or the temperature of car body is too high or your operation is not correct. The problem will be gone if you apply more glue, turn off the car engine, and then repeatedly operate.

Warm tips:
If the glue becomes fragile in an extremely cold day, you can apply hot water on the dent first, and then apply the glue.

Attention:

1. Glue sticks or repair tools bought from some local stores may fail to do the job as expected. They can't guarantee a good repair effect and may damage the paint. Our tools and glue sticks are professionally designed and applied to car body with years of practical experience. The paint won't be damaged and the repair effect is pretty good if you operate correctly.
2. If the paint of your car is not original, we suggest you not to buy our tools as it may damage the paint.

Notes :

If the product you received has quality problems or it is broken when you received or you find a shortage in number, please do not hesitate to tell us via photos or e-mails, we will reply you in time. Please read the instruction carefully before you use our product, and according to the instruction to operate it. If there is any question please feel free to contact us, we will arrange our technical staff to help you. Please give us a reasonable and fair feedback if you think our product is practical. It is really helpful to other person when they want to buy this product. You can not use the vehicle glue gun when there is dent on the hood need to repair, because the vehicle glue gun needs to start the car to charge it, and this action will cause the hood gets hot, if the hood get hot, the glue will be soft, and if the glue was soft, the viscosity will be weak, but except the place where its weather is extremely cold.

[how to operate the slide hammer dent puller]

Prepare the tools
You had better to clean the dent with alcohol and rag before repair.

[The assembly process for slide hammer dent puller]

- 1st: Connect the handle with the connecting rod of the puller.
- 2nd: Let the slide hammer and spring through the connecting rod.
- 3rd: Twist the puller.
- 4th: Installation is ok.

[The assembly process for short T]

1. Tear down the dent repair puller as picture.
2. Twist the handle and the connecting rod and make from one.
3. Installation is ok.

[The clean process for Glue Stick]

1. Prepare the glue stick and alcohol and rag.
2. Spray the alcohol on the glue stick.
3. Wipe the glue stick up with rag.
4. Insert the glue stick into the glue gun and prepare to charge it.

[Remark: slide hammer dent puller hereinafter referred to as "T puller"]

1. Clean the dent with wet rag, and mark it with marking pen.
2. Insert the glue stick into the glue gun and charge it by 3-5 minutes.
3. Choose a tab that matches the shape and size of the dent. (Please note: Bigger tab should be used for bigger dent because it has stronger traction, vice versa)
4. Apply hot melt glue on the top with the glue gun, remember to start from the center of the tab and in a circle inside and out, and make sure the glue is even and full on the tab.
5. Align the center point of tab with the dent center point, then quickly put the tab on the dent and slightly press it. (Wait 3-5 minutes till it cools down with only a little temperature when it has strongest viscosity.)
6. Touch the glue with your hand. When it cools down with only a little temperature, buckle the tab with T puller and fasten its position.
7. Hold the handle to impact upwards gradually till its surface flattens.
8. Spray the alcohol on the residual glue, and then clean it up with the scraper.

Kindly reminder:
If it is still unrepaired after above steps, you can repeat the steps several times till it is well repaired.
If the dent is repaired, but there's a bump on it, you can do as following steps:
1. Press the bump with your thumb continuously till it flattens.
2. If fail after the first step, you can use a tap down pen and aim at the bump, then knock it slightly with a rubber hammer. You can repeat till successful. (Please do not knock with too much force).

1. Clean the surface of the depression
2. Heat the glue stick with a glue gun and apply it to the puller tabs
3. Adjust the height of the pull head to fit the puller tabs
4. Place the dent lifter
5. Attach the puller tabs to the depression, wait about 2 minutes
6. Pull the tabs slowly

VEVOR[®]

TOUGH TOOLS, HALF PRICE

Product List

Model/Bild	XPT9008	XPT9009	XPT9010	XPT9011	XPT9012	XPT9013	XPT9014	XPT9016	XPT9017	XPT9018
Dellata&Bild										
T-format avdrigare						1				1
Tygge								2		1
Kedja		1								2
Ringa		3								
SHook		3								
Kofot	5									
Kofot		10								
Kofot				21						
Kofot						10				
Kofot										10
Röd kil								1		
Röd rak spade								1		
Slide Hammer			1	1	1	1	1	1	1	1
Reparera hammare					1				1	1
Bridge Dent Puller					1 set 7st	1 set 7st			1 set 7st	1 set 7st
Golden Dent Puller				1	1	1	1	1	1	1
Limpistol		1	1	1	1	1	1	1	1	1
Limsitt		12	12	20	12	12	10	10	15	
Plastik		24	24	34	36	54	66	66	54	
Groove of Puller Line				1 set 6st						
SprayBottle		1	1				1	1	1	1
Trasa		1	1					1		1
Trasa								1		
Verkyggbärsväska		2	2	2	2	2	2	2	2	2
Verkygsväska	1	1	1	1	1	1	1	1	1	1
Tap-down penna								5		5
Hammare		1	1	1	1	1	1	1	1	1
Spets på Tap-down Pen		1	1	1	1	1	1	1	1	1
Gummihjul	8	1	8	8	8	8	8	8	8	8
Skrapa		2	1				2	2	1	2
Skrapa						1				
Hovvase	2	2	2	2	2	2	2	2	2	2
Reflexstava							1		1	1

Technical Support and E-Warranty Certificate
www.vevor.com/support
Made In China

Detta är den ursprungliga instruktionen, läs alla manualer noggrant innan användning. VEVOR reserverar sig för en tydlig tolkning av vår bruksanvisning. Produktens utseende ska vara beroende av produkt du fått. Förlåt oss att vi inte kommer att informera dig igen om det finns någon teknik eller mjukvaruuppdateringar på vår produkt.

VIKTIGA SÄKERHETSÅTGÄRDER



Spara dessa instruktioner. Läs alla försiktighetsåtgärder och instruktioner. Rezhgad hela Viktig säkerhetsinformation avsnitt i början av detta dokument inklusive all text under underrubriker däri innan uppsättning eller användning av denna

produkt. Läs och förstå hela denna manual innan du monterar, installerar, använder eller servar denna produkt. Underlåtenhet att följa dessa varningar och instruktioner kan orsaka dödsfall, personskada eller skada på värdefull egendom.

1. HÅLL ARBETSOMRÅDET RENT OCH TORRT.

Belamrade, fuktiga eller våta arbetsområden leder till skador.

2. HÅLL BARN BORTA FRÅN ARBETSOMRÅDET.

Denna produkt är inte en leksak. Låt inte barn använda eller nära denna produkt.

3. FÖRVARA UTRUSTNING TOM UTRUSTNING.

När de inte används ska verktyg och utrustning förvaras på en torr plats för att förhindra rost. Lås alltid in verktyg och utrustning och förvara dem utom räckhåll barn.

4. ANVÄND INTE DENNA PRODUKT OM UNDER PÅVERKANDE AV ALKOHOL ELLER DROGER.

Läs varningsetiketter på recept för att avgöra om din bedömning eller reflexer är nedsatt när du tar droger. Om det finns några tvivel, försök inte använda detta produkt.

5. SÄKER ANVÄNDNING.

a. Använd ANSI-godkända skyddsglasögon och kraftiga arbetshandskar under användning.

b. Halkfria skor eller skyddsskor bör användas när du arbetar med detta produkt. Bär inte löst sittande kläder eller smycken eftersom de kan fastna i rörliga delar. Bär ett skyddande hårskydd för att förhindra långt hår fastnar i rörliga delar. Om du bär en långärmad skjorta, rulla upp ärmarna ovanför armbågarna.

6. RÅD INTE ÖVER.

Håll alltid rätt fotfäste och balans för att förhindra snubbling, fall, tillbaka skada osv.

7. VAR ALERT.

Titta på vad du gör hela tiden. Använd sunt förnuft. Använd inte detta produkt när du är trött eller distraherad från det aktuella jobbet.

8. KONTROLLERA FÖR SKADADE DELAR.

Innan du använder denna produkt, kontrollera noggrant att den fungerar korrekt och utföra sin avsedda funktion. Kontrollera om det finns skadade delar och andra förhållanden som kan påverka denna produkts funktion. Byt ut eller reparera skadade eller slitna delar omedelbart.

9. ERSÄTTNINGSDELAR OCH TILLBEHÖR.

Använd endast identiska reservdelar vid service. Använd endast tillbehör avsedd för denna produkt. Godkända tillbehör finns tillgängliga från distributören.

10. UNDERHÅLL DENNA PRODUKT MED FÖRSIKTIGHET.

Håll detta verktyg rent och torrt och håll sågklingorna rena och vassa för bättre och säkrare prestanda.

11. UNDERHÅLL:

För din säkerhet bör service och underhåll utföras regelbundet av en kvalificerad tekniker.

12. ANVÄND RÄTT PRODUKT FÖR RÄTT JOBB.

- a. Använd endast som avsett.
- b. Det finns vissa applikationer som denna produkt är designad för. Gör inte det använda liten utrustning, verktyg eller tillbehör för att utföra arbetet med större industri utrustning, verktyg eller tillbehör. Använd inte denna produkt för ett ändamål vilket det inte var meningen

13. Säkerhetsinstruktioner för smältlimpistol

När du använder din smältlimpistol, bör grundläggande säkerhetsåtgärder alltid finnas följande:

- a. Läs alla instruktioner.

Kontrollera att spänningen som anges på typskylten överensstämmer med den för lokalt nätverk innan du ansluter apparaten till elnätet.

- c. Lämna inte apparaten utan uppsikt när den är ansluten till elnätet
- d. förse.

Sänk inte ner apparaten i vatten eller andra vätskor.

Det är absolut nödvändigt att dra ur nätsladden efter att apparaten har använts, innan den rengörs och under reparation.

- e. Noggrann övervakning krävs när du använder denna apparat nära barn.

- f. Lämna aldrig apparaten inom räckhåll för barn.
- g. Reparationer av elektriska apparater bör endast utföras av en kvalificerad person elektriker. Felaktiga reparationer kan utsätta användaren för allvarlig risk.
- h. Denna apparat är endast avsedd för hushållsbruk och bör inte användas för kommersiella ändamål.

- i. Använd inte apparaten med en skadad kontakt eller sladd, efter ett fel eller efter att ha tappats eller skadats på något sätt.

- j. Använd inte apparaten för något annat än dess avsedda användning.
- k. Rör inte vid heta ytor, använd handtag eller vred när du arbetar med enheten.

- l. Förvara apparaten och dess sladd utom räckhåll för barn under 8 år. Detta apparaten är inte avsedd att användas av personer (inklusive barn) med nedsatt fysiska, sensoriska eller mentala förmågor, eller brist på erfarenhet och kunskap, såvida de inte har fått övervakning eller instruktioner om användningen av apparat av en person som ansvarar för deras säkerhet. Barn bör övervakas för att säkerställa att de inte leker med apparaten.
- m. Om nätsladden är skadad måste den bytas ut av tillverkaren serviceombud eller liknande kvalificerade personer för att undvika fara.



Korrekt kassering av smältimpistol: Denna produkt omfattas av bestämmelserna i det europeiska direktivet 2012/19/EC. Symbolen som visar en soptunna korsad anger att produkten kräver separat sophämtning i EU. Detta gäller för produkten och alla tillhör märkta med denna symbol. Produkter märkta som sådana får inte slängas tillsammans med vanligt hushållsavfall, utan måste lämnas till en samlingsplats för återvinning av elektriska och

elektroniska apparater

Adress: Baoshanqu Shuangchenglu 803long 11hao 1602A-1609shi Shanghai **Importerad till AUS:**

SIHAO PTY LTD. 1 ROKEVA STREETEASTWOOD NSW 2122 Australien **Importerad till USA:**
Sanven Technology

Ltd. Suite 250, 9166 Anaheim Place, Rancho Cucamonga, CA 91730



Pooledas Group Ltd
Enhet 5 Albert Edward House, The Pavilions
Preston, Storbritannien



SHUNSHUN GmbH
Römeräcker 9 Z2021, 76351 Linkenheim-
Hochstetten, Tyskland

Tillverkad i Kina

VEVOR[®]
TOUGH TOOLS, HALF PRICE

Teknisk support och e-garanticertifikat
www.vevor.com/support