

# **VEVOR<sup>®</sup>**

**TOUGH TOOLS, HALF PRICE**

Technical Support and E-Warranty Certificate <https://www.vevor.com/support>

## **PROJECTION SCREEN**

### **USER MANUAL**

**MODEL NO.: QC-20XP**

We continue to be committed to provide you tools with competitive price.

"Save Half", "Half Price" or any other similar expressions used by us only represents an estimate of savings you might benefit from buying certain tools with us compared to the major top brands and does not necessarily mean to cover all categories of tools offered by us. You are kindly reminded to verify carefully when you are placing an order with us if you are actually saving half in comparison with the top major brands.

# VEVOR®

TOUGH TOOLS, HALF PRICE

## Projection Screen

MODEL NO.: QC-20XP



### NEED HELP? CONTACT US!

Have product questions? Need technical support? Please feel free to contact us:

**Technical Support and E-Warranty Certificate**  
**[www.vevor.com/support](http://www.vevor.com/support)**

This is the original instruction, please read all manual instructions carefully before operating. VEVOR reserves a clear interpretation of our user manual. The appearance of the product shall be subject to the product you received. Please forgive us that we won't inform you again if there are any technology or software updates on our product.

 **WARNING:**

**Please read this manual carefully before using the product. Failure to do so may result in serious injury. SAVE THIS MANUAL**

Inflatable movie screen storage precautions

1. Do not use fingers or hard objects to touch the screen surface. Do not splash milk, fruit juice or other chemical doses to the screen surface. Keep the screen far away from high temperature objects or fire.
2. If the screen is dirty, wash it gently with a clean cloth or a cotton ball. Do not use organic solvents to clean the screen surface.
3. Avoid strong squeezing as much as possible.
4. Avoid storing in a cool and humid place, try to keep it dry.
5. Keep ventilated and stay away from fire4. Keep the inflation fan on when using it.

## TECHNICAL SPECIFICATIONS

Model	QC-20XP	
Rating(s)	AC120V, 60Hz, 370W	AC220-240V, 50Hz, 370W
Size(ft)	20	
Product Dimensions (LxWxH)(mm)	4900*2000*3675	
Packing Size (LxWxH) (mm)	410*410*410	
Net Weight (kg)	10.4	
Gross Weight (kg)	11.6	

## PACKAGE CONTENTS



Storage bag\*1



Projection



Frame\*1



Iron Stakes\*6



strong ropes\*4



Blower\*1

## ASSEMBLY STEPS



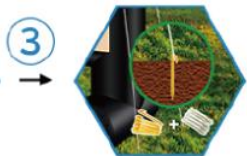
1 Lay out frame, close deflation zipper and attach to the blower.



2 Turn on the blower, inflate in 2 minutes.



3 Attach the white screen to the black frame.



Let it stand up, attach the wind cord.

## COMPLETION



**Manufacturer:** Shanghaimuxinmuyeyouxiangongsi

**Address:** Shuangchenglu 803nong11hao1602A-1609shi, baoshanqu, shanghai 200000 CN.

**Imported to AUS:** SIHAO PTY LTD. 1 ROKEVA STREETEASTWOOD NSW 2122 Australia

**Imported to USA:** Sanven Technology Ltd. Suite 250, 9166 Anaheim Place, Rancho Cucamonga, CA 91730

<b>EC</b>	<b>REP</b>
-----------	------------

E-CrossStu GmbH  
Mainzer Landstr.69, 60329 Frankfurt am Main.

<b>UK</b>	<b>REP</b>
-----------	------------

YH CONSULTING LIMITED.  
C/O YH Consulting Limited Office 147, Centurion House, London Road, Staines-upon-Thames, Surrey, TW18 4AX



**VEVOR<sup>®</sup>**

**TOUGH TOOLS, HALF PRICE**

**Technical Support and E-Warranty Certificate**

**[www.vevor.com/support](http://www.vevor.com/support)**



# **VEVOR<sup>®</sup>**

**TOUGH TOOLS, HALF PRICE**

Techniczny Wsparcie i certyfikat gwarancji elektronicznej

<https://www.vevor.com/support>

## **EKRAN PROJEKCYJNY**

### **INSTRUKCJA OBSŁUGI**

**NR MODELU: QC-20XP**

We continue to be committed to provide you tools with competitive price.

"Save Half", "Half Price" or any other similar expressions used by us only represents an estimate of savings you might benefit from buying certain tools with us compared to the major top brands and does not necessarily mean to cover all categories of tools offered by us. You are kindly reminded to verify carefully when you are placing an order with us if you are actually saving half in comparison with the top major brands.

# VEVOR®

TOUGH TOOLS, HALF PRICE

## Projection Screen

NR MODELU: QC-20XP



### NEED HELP? CONTACT US!

Have product questions? Need technical support? Please feel free to contact us:

**Technical Support and E-Warranty Certificate**  
**[www.vevor.com/support](http://www.vevor.com/support)**

This is the original instruction, please read all manual instructions carefully before operating. VEVOR reserves a clear interpretation of our user manual. The appearance of the product shall be subject to the product you received. Please forgive us that we won't inform you again if there are any technology or software updates on our product.

## OSTRZEŻENIE:

**Przed użyciem produktu należy uważnie przeczytać tę instrukcję. Nieprzestrzeganie jej może spowodować poważne obrażenia. ZACHOWAJ TĘ INSTRUKCJĘ**

Środki ostrożności dotyczące przechowywania nadmuchiwanego ekranu filmowego

1. Nie dotykaj powierzchni ekranu palcami ani twardymi przedmiotami. Nie rozchlapuj mleka, soku owocowego ani innych dawek chemicznych na powierzchnię ekranu. Trzymaj ekran z dala od przedmiotów o wysokiej temperaturze lub ognia.
2. Jeśli ekran jest brudny, umyj go delikatnie czystą szmatką lub wacikiem. Nie używaj rozpuszczalników organicznych do czyszczenia powierzchni ekranu.
3. Unikaj mocnego ściskania, o ile to możliwe.
4. Unikaj przechowywania w chłodnym i wilgotnym miejscu, staraj się, aby było suche.
5. Przechowywać w miejscu wentylowanym i trzymać się z dala od ognia.
4. Podczas korzystania z urządzenia należy trzymać włączony wentylator.

## TECHNICAL SPECIFICATIONS

Model	QC-20XP	
Ocena(y)	AC120V, 60Hz, 370W	AC220-240V, 50Hz, 370W
Rozmiar (ft )	20	
Wymiary produktu (Dł. x Szer. x Wys.) (mm)	4900*2000*3675	

Rozmiar opakowania (Dł. x szer. x wys.) (mm)	410*410*410
Masa netto (kg)	10.4
Masa brutto (kg)	11.6

## PACKAGE CONTENTS



Storage bag\*1



Projection



Frame\*1



Iron Stakes\*6



strong ropes\*4



Blower\*1

## ASSEMBLY STEPS



①



②



③



Lay out frame, close deflation zipper and attach to the blower.

Turn on the blower, inflate in 2 minutes.

Attach the white screen to the black frame.

Let it stand up, attach the wind cord.

## COMPLETION





**Producent:** Shanghaimuxinmuyeyouxiangongsi

**Adres:** Shuangchenglu 803nong11hao1602A-1609shi, baoshanqu, szanghaj 200000 CN.

**Importowane do AUS:** SIHAO PTY LTD. 1 ROKEVA  
STREETEASTWOOD NSW 2122 Australia

**Importowane do USA:** Sanven Technology Ltd. Suite 250, 9166 Anaheim  
Place, Rancho Cucamonga, CA 91730

<b>EC</b>	<b>REP</b>
-----------	------------

E-CrossStu GmbH  
Mainzer Landstr.69, 60329 Frankfurt am Main.

<b>UK</b>	<b>REP</b>
-----------	------------

YH CONSULTING LIMITED.  
C/O YH Consulting Limited Office 147, Centurion  
House, London Road, Staines-upon-Thames, Surrey,  
TW18 4AX





**VEVOR<sup>®</sup>**

**TOUGH TOOLS, HALF PRICE**

**Techniczny Wsparcie i certyfikat e-gwarancji**

**[www.vevor.com/support](http://www.vevor.com/support)**

# **VEVOR<sup>®</sup>**

**TOUGH TOOLS, HALF PRICE**

Technisch Support und E-Garantie-Zertifikat <https://www.vevor.com/support>

## **PROJEKTIONSLEINWAND BENUTZERHANDBUCH**

**MODELLNR.: QC-20XP**

We continue to be committed to provide you tools with competitive price.

"Save Half", "Half Price" or any other similar expressions used by us only represents an estimate of savings you might benefit from buying certain tools with us compared to the major top brands and does not necessarily mean to cover all categories of tools offered by us. You are kindly reminded to verify carefully when you are placing an order with us if you are actually saving half in comparison with the top major brands.

# VEVOR®

TOUGH TOOLS, HALF PRICE

## Projection Screen

MODELLNR.: QC-20XP



### NEED HELP? CONTACT US!

Have product questions? Need technical support? Please feel free to contact us:

**Technical Support and E-Warranty Certificate**  
**[www.vevor.com/support](http://www.vevor.com/support)**

This is the original instruction, please read all manual instructions carefully before operating. VEVOR reserves a clear interpretation of our user manual. The appearance of the product shall be subject to the product you received. Please forgive us that we won't inform you again if there are any technology or software updates on our product.

 **WARNUNG:**

**Bitte lesen Sie dieses Handbuch sorgfältig durch, bevor Sie das Produkt verwenden. Andernfalls kann es zu schweren Verletzungen kommen. BEWAHREN SIE DIESES HANDBUCH AUF**

Vorsichtsmaßnahmen bei der Lagerung aufblasbarer Filmleinwände

1. Berühren Sie die Bildschirmoberfläche nicht mit Fingern oder harten Gegenständen. Spritzen Sie keine Milch, Fruchtsäfte oder andere Chemikalien auf die Bildschirmoberfläche. Halten Sie den Bildschirm von heißen Gegenständen oder Feuer fern.
2. Wenn der Bildschirm schmutzig ist, waschen Sie ihn vorsichtig mit einem sauberen Tuch oder einem Wattebausch. Verwenden Sie zum Reinigen der Bildschirmoberfläche keine organischen Lösungsmittel.
3. Vermeiden Sie möglichst starkes Drücken.
4. Vermeiden Sie die Lagerung an einem kühlen und feuchten Ort, versuchen Sie, es trocken zu halten.
5. Für Belüftung sorgen und von Feuer fernhalten 4. Lassen Sie den Aufblasventilator während der Verwendung eingeschaltet.

## TECHNICAL SPECIFICATIONS

Modell	QC-20XP	
Bewertung(en)	Wechselstrom 120 V, 60 Hz, 370 W	AC 220–240 V, 50 Hz, 370 W
Größe ( ft)	20	
Technische Daten (L x B x H) (mm)	4900*2000*3675	
Verpackungsgröße (L x B x H) (mm)	410*410*410	

Nettogewicht (kg)	10.4
Bruttogewicht (kg)	11.6

## PACKAGE CONTENTS



Storage bag\*1



Projection



Frame\*1



Iron Stakes\*6



strong ropes\*4

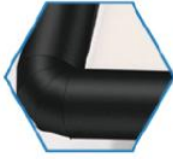


Blower\*1

## ASSEMBLY STEPS



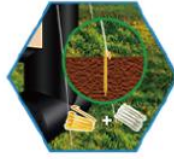
1



2



3



Lay out frame, close deflation zipper and attach to the blower.

Turn on the blower, inflate in 2 minutes.

Attach the white screen to the black frame.

Let it stand up, attach the wind cord.

## COMPLETION





**Hersteller:** Shanghaimuxinmuyeyouxiangongsi

**Adresse:** Shuangchenglu 803nong11hao1602A-1609shi, baoshanqu, Shanghai 200000 CN.

**Nach AUS importiert:** SIHAO PTY LTD. 1 ROKEVA  
STREETEASTWOOD NSW 2122 Australien

**Importiert in die USA:** Sanven Technology Ltd. Suite 250, 9166 Anaheim Place, Rancho Cucamonga, CA 91730

<b>EC</b>	<b>REP</b>
-----------	------------

E-CrossStu GmbH  
Mainzer Landstr.69, 60329 Frankfurt am Main.

<b>UK</b>	<b>REP</b>
-----------	------------

YH CONSULTING LIMITED.  
C/O YH Consulting Limited Office 147, Centurion House, London Road, Staines-upon-Thames, Surrey, TW18 4AX





**VEVOR<sup>®</sup>**

**TOUGH TOOLS, HALF PRICE**

**Technisch Support und E-Garantie-Zertifikat**

**[www.vevor.com/support](http://www.vevor.com/support)**

# **VEVOR<sup>®</sup>**

**TOUGH TOOLS, HALF PRICE**

Technique Certificat d'assistance et de garantie électronique

<https://www.vevor.com/support>

## **ÉCRAN DE PROJECTION**

## **MANUEL D' UTILISATION**

**MODÈLE N° : QC-20XP**

We continue to be committed to provide you tools with competitive price.

"Save Half", "Half Price" or any other similar expressions used by us only represents an estimate of savings you might benefit from buying certain tools with us compared to the major top brands and does not necessarily mean to cover all categories of tools offered by us. You are kindly reminded to verify carefully when you are placing an order with us if you are actually saving half in comparison with the top major brands.

# VEVOR®

TOUGH TOOLS, HALF PRICE

## Projection Screen

MODÈLE N° : QC-20XP



### NEED HELP? CONTACT US!

Have product questions? Need technical support? Please feel free to contact us:

**Technical Support and E-Warranty Certificate**  
**[www.vevor.com/support](http://www.vevor.com/support)**

This is the original instruction, please read all manual instructions carefully before operating. VEVOR reserves a clear interpretation of our user manual. The appearance of the product shall be subject to the product you received. Please forgive us that we won't inform you again if there are any technology or software updates on our product.

 **AVERTISSEMENT:**

**Veillez lire attentivement ce manuel avant d'utiliser le produit. Le non-respect de ces instructions peut entraîner des blessures graves.**

**CONSERVEZ CE MANUEL**

Précautions de stockage pour les écrans de cinéma gonflables

1. N'utilisez pas les doigts ou des objets durs pour toucher la surface de l'écran. Ne projetez pas de lait, de jus de fruits ou d'autres produits chimiques sur la surface de l'écran. Gardez l'écran loin des objets à haute température ou du feu.
2. Si l'écran est sale, lavez-le délicatement avec un chiffon propre ou un coton. N'utilisez pas de solvants organiques pour nettoyer la surface de l'écran.
3. Évitez autant que possible de presser trop fort.
4. Évitez de le stocker dans un endroit frais et humide, essayez de le garder au sec.
5. Gardez l'appareil bien aéré et éloignez-le du feu. 4. Gardez le ventilateur de gonflage allumé lorsque vous l'utilisez.

## TECHNICAL SPECIFICATIONS

Modèle	QC-20XP	
Note(s)	120 V CA, 60 Hz, 370 W	CA 220-240 V, 50 Hz, 370 W
Taille (pieds )	20	
Dimensions du produit (L x l x H) (mm)	4900*2000*3675	
Taille de l'emballage (LxlxH) (mm)	410*410*410	

Poids net (kg)	10.4
Poids brut (kg)	11.6

## PACKAGE CONTENTS



Storage bag\*1



Projection



Frame\*1



Iron Stakes\*6



strong ropes\*4

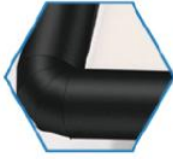


Blower\*1

## ASSEMBLY STEPS



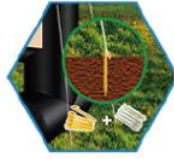
1



2



3



Lay out frame, close deflation zipper and attach to the blower.

Turn on the blower, inflate in 2 minutes.

Attach the white screen to the black frame.

Let it stand up, attach the wind cord.

## COMPLETION







**Fabricant** : Shanghaimuxinmuyeyouxiangongsi

**Adresse** : Shuangchenglu 803nong11hao1602A-1609shi, baoshanqu,  
Shanghai 200000 CN.

**Importé en Australie** : SIHAO PTY LTD. 1 ROKEVA  
STREETEASTWOOD NSW 2122 Australie

**Importé aux États-Unis** : Sanven Technology Ltd. Suite 250, 9166  
Anaheim Place, Rancho Cucamonga, CA 91730

<b>EC</b>	<b>REP</b>
-----------	------------

E-CrossStu GmbH  
Mainzer Landstr.69, 60329 Frankfurt am Main.

<b>UK</b>	<b>REP</b>
-----------	------------

YH CONSULTING LIMITED.  
C/O YH Consulting Limited Office 147, Centurion  
House, London Road, Staines-upon-Thames, Surrey,  
TW18 4AX



**VEVOR<sup>®</sup>**

**TOUGH TOOLS, HALF PRICE**

**Technique Certificat d'assistance et de garantie électronique**

**[www.vevor.com/support](http://www.vevor.com/support)**

# **VEVOR<sup>®</sup>**

**TOUGH TOOLS, HALF PRICE**

Technisch Ondersteuning en E-garantiecertificaat <https://www.vevor.com/support>

## **PROJECTIESCHERM GEBRUIKSAANWIJZING**

**MODELNUMMER: QC-20XP**

We continue to be committed to provide you tools with competitive price.

"Save Half", "Half Price" or any other similar expressions used by us only represents an estimate of savings you might benefit from buying certain tools with us compared to the major top brands and does not necessarily mean to cover all categories of tools offered by us. You are kindly reminded to verify carefully when you are placing an order with us if you are actually saving half in comparison with the top major brands.

# VEVOR®

TOUGH TOOLS, HALF PRICE

## Projection Screen

MODELNUMMER: QC-20XP



### NEED HELP? CONTACT US!

Have product questions? Need technical support? Please feel free to contact us:

**Technical Support and E-Warranty Certificate**  
**[www.vevor.com/support](http://www.vevor.com/support)**

This is the original instruction, please read all manual instructions carefully before operating. VEVOR reserves a clear interpretation of our user manual. The appearance of the product shall be subject to the product you received. Please forgive us that we won't inform you again if there are any technology or software updates on our product.

 **WAARSCHUWING:**

**Lees deze handleiding zorgvuldig door voordat u het product gebruikt. Als u dit niet doet, kan dit leiden tot ernstig letsel. BEWAAR DEZE HANDLEIDING**

Voorzorgsmaatregelen voor het opbergen van opblaasbare filmschermen

1. Raak het schermoppervlak niet aan met uw vingers of harde voorwerpen. Spat geen melk, vruchtensap of andere chemische stoffen op het schermoppervlak. Houd het scherm ver weg van hete voorwerpen of vuur.
2. Als het scherm vuil is, was het dan voorzichtig met een schone doek of een wattenbolletje. Gebruik geen organische oplosmiddelen om het schermoppervlak schoon te maken.
3. Vermijd zoveel mogelijk hard knijpen.
4. Bewaar het niet op een koele en vochtige plaats, maar probeer het droog te houden.
5. Zorg voor ventilatie en blijf uit de buurt van vuur. Laat de opblaasventilator aanstaan wanneer u deze gebruikt.

## TECHNICAL SPECIFICATIONS

Model	QC-20XP	
Beoordeling(en)	AC120V, 60Hz, 370W	AC220-240V, 50Hz, 370W
Grootte ( ft)	20	
Productafmetingen (LxBxH)(mm)	4900*2000*3675	
Verpakkingsgrootte (LxBxH) (mm)	410*410*410	

Nettogewicht (kg)	10.4
Brutogewicht (kg)	11.6

## PACKAGE CONTENTS



Storage bag\*1



Projection



Frame\*1



Iron Stakes\*6



strong ropes\*4

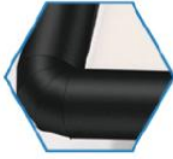


Blower\*1

## ASSEMBLY STEPS



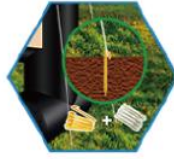
1



2



3



Lay out frame, close deflation zipper and attach to the blower.

Turn on the blower, inflate in 2 minutes.

Attach the white screen to the black frame.

Let it stand up, attach the wind cord.

## COMPLETION







**Fabrikant:** Shanghaimuxinmuyeyouxiangongsi

**Adres:** Shuangchenglu 803nong11hao1602A-1609shi, baoshanqu, shanghai 200000 CN.

**Geïmporteerd naar AUS:** SIHAO PTY LTD. 1 ROKEVA  
STREETEASTWOOD NSW 2122 Australië

**Geïmporteerd naar de VS:** Sanven Technology Ltd. Suite 250, 9166  
Anaheim Place, Rancho Cucamonga, CA 91730

<b>EC</b>	<b>REP</b>
-----------	------------

E-CrossStu GmbH  
Mainzer Landstr.69, 60329 Frankfurt am Main.

<b>UK</b>	<b>REP</b>
-----------	------------

YH CONSULTING LIMITED.  
C/O YH Consulting Limited Office 147, Centurion  
House, London Road, Staines-upon-Thames, Surrey,  
TW18 4AX



**VEVOR<sup>®</sup>**

**TOUGH TOOLS, HALF PRICE**

**Technisch Ondersteuning en E-garantiecertificaat**

**[www.vevor.com/support](http://www.vevor.com/support)**

# **VEVOR<sup>®</sup>**

**TOUGH TOOLS, HALF PRICE**

Teknisk Support och e-garanticertifikat <https://www.vevor.com/support>

## **PROJEKTIONSDUK**

### **ANVÄNDARMANUAL**

**MODELLNR: QC-20XP**

We continue to be committed to provide you tools with competitive price.

"Save Half", "Half Price" or any other similar expressions used by us only represents an estimate of savings you might benefit from buying certain tools with us compared to the major top brands and does not necessarily mean to cover all categories of tools offered by us. You are kindly reminded to verify carefully when you are placing an order with us if you are actually saving half in comparison with the top major brands.

# VEVOR®

TOUGH TOOLS, HALF PRICE

## Projection Screen

MODELLNR: QC-20XP



### NEED HELP? CONTACT US!

Have product questions? Need technical support? Please feel free to contact us:

**Technical Support and E-Warranty Certificate**  
**[www.vevor.com/support](http://www.vevor.com/support)**

This is the original instruction, please read all manual instructions carefully before operating. VEVOR reserves a clear interpretation of our user manual. The appearance of the product shall be subject to the product you received. Please forgive us that we won't inform you again if there are any technology or software updates on our product.

 **VARNING:**

**Läs denna bruksanvisning noggrant innan du använder produkten. Underlåtenhet att göra det kan leda till allvarliga skador. SPARA DENNA MANUAL**

Försiktighetsåtgärder för förvaring av uppblåsbar filmskärm

1. Använd inte fingrar eller hårda föremål för att vidröra skärmytan. Stänk inte mjölk, fruktjuice eller andra kemikaliedoser till skärmens yta. Håll skärmen långt borta från föremål med hög temperatur eller eld.
2. Om skärmen är smutsig, tvätta den försiktigt med en ren trasa eller en bomullstuss. Använd inte organiska lösningsmedel för att rengöra skärmens yta.
3. Undvik stark klämning så mycket som möjligt.
4. Undvik att förvara på en sval och fuktig plats, försök att hålla den torr.
5. Håll ventilerat och håll dig borta från eld. Håll uppblåsningsslakten på när du använder den.

## TECHNICAL SPECIFICATIONS

Modell	QC-20XP	
Betyg(er)	AC120V, 60Hz, 370W	AC220-240V, 50Hz, 370W
Storlek (ft )	20	
Produktens mått (LxBxH)(mm)	4900*2000*3675	
Förpackningsstorlek (LxBxH) (mm)	410*410*410	
Nettovikt (kg)	10.4	

Bruttovikt (kg)

11.6

## PACKAGE CONTENTS



Storage bag\*1



Projection



Frame\*1



Iron Stakes\*6



strong ropes\*4



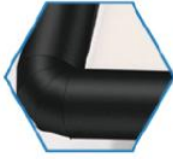
Blower\*1

## ASSEMBLY STEPS





1



2



3



Lay out frame, close deflation zipper and attach to the blower.

Turn on the blower, inflate in 2 minutes.

Attach the white screen to the black frame.

Let it stand up, attach the wind cord.

## COMPLETION





**Tillverkare:** Shanghaimuxinmuyeyouxiangongsi

**Adress:** Shuangchenglu 803nong11hao1602A-1609shi, baoshanqu, shanghai 200000 CN.

**Importerad till AUS:** SIHAO PTY LTD. 1 ROKEVA STREETEASTWOOD NSW 2122 Australien

**Importerad till USA:** Sanven Technology Ltd. Suite 250, 9166 Anaheim Place, Rancho Cucamonga, CA 91730

<b>EC</b>	<b>REP</b>
-----------	------------

E-CrossStu GmbH  
Mainzer Landstr.69, 60329 Frankfurt am Main.

<b>UK</b>	<b>REP</b>
-----------	------------

YH CONSULTING LIMITED.  
C/O YH Consulting Limited Office 147, Centurion House, London Road, Staines-upon-Thames, Surrey, TW18 4AX



**VEVOR<sup>®</sup>**

**TOUGH TOOLS, HALF PRICE**

**Teknisk Support och e-garanticertifikat**

**[www.vevor.com/support](http://www.vevor.com/support)**

# **VEVOR<sup>®</sup>**

**TOUGH TOOLS, HALF PRICE**

Técnico Certificado de soporte y garantía electrónica

<https://www.vevor.com/support>

## **PANTALLA DE PROYECCIÓN**

### **MANUAL DEL USUARIO**

**N.º DE MODELO: QC-20XP**

We continue to be committed to provide you tools with competitive price.

"Save Half", "Half Price" or any other similar expressions used by us only represents an estimate of savings you might benefit from buying certain tools with us compared to the major top brands and does not necessarily mean to cover all categories of tools offered by us. You are kindly reminded to verify carefully when you are placing an order with us if you are actually saving half in comparison with the top major brands.

# VEVOR®

TOUGH TOOLS, HALF PRICE

## Projection Screen

N.º DE MODELO: QC-20XP



### NEED HELP? CONTACT US!

Have product questions? Need technical support? Please feel free to contact us:

**Technical Support and E-Warranty Certificate**  
**[www.vevor.com/support](http://www.vevor.com/support)**

This is the original instruction, please read all manual instructions carefully before operating. VEVOR reserves a clear interpretation of our user manual. The appearance of the product shall be subject to the product you received. Please forgive us that we won't inform you again if there are any technology or software updates on our product.



## ADVERTENCIA:

**Lea atentamente este manual antes de utilizar el producto. De lo contrario, podría sufrir lesiones graves. GUARDE ESTE MANUAL**

Precauciones para el almacenamiento de pantallas de cine inflables

1. No use los dedos ni objetos duros para tocar la superficie de la pantalla. No salpique leche, jugo de frutas ni otras sustancias químicas sobre la superficie de la pantalla. Mantenga la pantalla alejada de objetos a altas temperaturas o del fuego.
2. Si la pantalla está sucia, lávela suavemente con un paño limpio o una bolita de algodón. No utilice disolventes orgánicos para limpiar la superficie de la pantalla.
3. Evite en lo posible apretar con fuerza.
4. Evite almacenarlo en un lugar fresco y húmedo, trate de mantenerlo seco.
5. Manténgalo ventilado y alejado del fuego. 4. Mantenga el ventilador de inflado encendido cuando lo use.

## TECHNICAL SPECIFICATIONS

Modelo	Control de calidad-20XP	
Calificación(es)	CA 120 V, 60 Hz, 370 W	CA 220-240 V, 50 Hz, 370 W
Tamaño (pies )	20	
Dimensiones del producto (Largo x Ancho x Alto) (mm)	4900*2000*3675	
Tamaño del embalaje (Largo x Ancho x Alto) (mm)	410*410*410	



Peso neto (kg)	10.4
Peso bruto (kg)	11.6

## PACKAGE CONTENTS



Storage bag\*1



Projection



Frame\*1



Iron Stakes\*6



strong ropes\*4

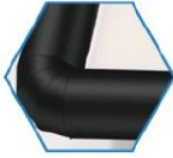


Blower\*1

## ASSEMBLY STEPS



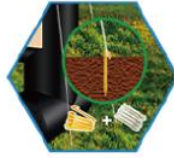
1



2



3



Lay out frame, close deflation zipper and attach to the blower.

Turn on the blower, inflate in 2 minutes.

Attach the white screen to the black frame.

Let it stand up, attach the wind cord.

## COMPLETION





**Fabricante:** Shanghaimuxinmuyeyouxiangongsi

**Dirección:** Shuangchenglu 803nong11hao1602A-1609shi, baoshanqu, shanghai 200000 CN.

**Importado a AUS:** SIHAO PTY LTD. 1 ROKEVA STREETEASTWOOD NSW 2122 Australia

**Importado a EE. UU.:** Sanven Technology Ltd. Suite 250, 9166 Anaheim Place, Rancho Cucamonga, CA 91730

<b>EC</b>	<b>REP</b>
-----------	------------

E-CrossStu GmbH  
Mainzer Landstr.69, 60329 Frankfurt am Main.

<b>UK</b>	<b>REP</b>
-----------	------------

YH CONSULTING LIMITED.  
C/O YH Consulting Limited Office 147, Centurion House, London Road, Staines-upon-Thames, Surrey, TW18 4AX



**VEVOR<sup>®</sup>**

**TOUGH TOOLS, HALF PRICE**

**Técnico Certificado de soporte y garantía electrónica**

**[www.vevor.com/support](http://www.vevor.com/support)**

# **VEVOR<sup>®</sup>**

**TOUGH TOOLS, HALF PRICE**

Tecnico Supporto e certificato di garanzia elettronica

<https://www.vevor.com/support>

## **SCHERMO DI PROIEZIONE**

### **MANUALE D' USO**

**MODELLO NUMERO: QC-20XP**

We continue to be committed to provide you tools with competitive price.

"Save Half", "Half Price" or any other similar expressions used by us only represents an estimate of savings you might benefit from buying certain tools with us compared to the major top brands and does not necessarily mean to cover all categories of tools offered by us. You are kindly reminded to verify carefully when you are placing an order with us if you are actually saving half in comparison with the top major brands.

# VEVOR®

TOUGH TOOLS, HALF PRICE

## Projection Screen

MODELLO NUMERO: QC-20XP



### NEED HELP? CONTACT US!

Have product questions? Need technical support? Please feel free to contact us:

**Technical Support and E-Warranty Certificate**  
**[www.vevor.com/support](http://www.vevor.com/support)**

This is the original instruction, please read all manual instructions carefully before operating. VEVOR reserves a clear interpretation of our user manual. The appearance of the product shall be subject to the product you received. Please forgive us that we won't inform you again if there are any technology or software updates on our product.





## AVVERTIMENTO:

**Si prega di leggere attentamente questo manuale prima di utilizzare il prodotto. La mancata osservanza di questa precauzione potrebbe causare gravi lesioni. CONSERVARE QUESTO MANUALE**

Precauzioni per lo stoccaggio degli schermi gonfiabili

1. Non usare dita o oggetti duri per toccare la superficie dello schermo. Non spruzzare latte, succo di frutta o altre dosi chimiche sulla superficie dello schermo. Tenere lo schermo lontano da oggetti ad alta temperatura o dal fuoco.
2. Se lo schermo è sporco, lavarlo delicatamente con un panno pulito o un batuffolo di cotone. Non usare solventi organici per pulire la superficie dello schermo.
3. Evitare il più possibile di stringere troppo forte.
4. Evitare di conservare in un luogo fresco e umido, cercare di mantenerlo asciutto.
5. Mantenere ventilato e stare lontano dal fuoco<sup>4</sup>. Tenere accesa la ventola di gonfiaggio quando la si utilizza.

## TECHNICAL SPECIFICATIONS

Modello	QC-20XP	
Valutazione(i)	AC120V, 60Hz, 370W	AC220-240V, 50Hz, 370W
Dimensioni (piedi )	20	
Dimensioni del prodotto (Lunghezza x Larghezza x Altezza)(mm)	Dimensioni: 4900*2000*3675	

Dimensioni dell'imballaggio (Lunghezza x Larghezza x Altezza) (mm)	410*410*410
Peso netto (kg)	10.4
Peso lordo (kg)	11.6

### PACKAGE CONTENTS



Storage bag\*1



Projection



Frame\*1



Iron Stakes\*6



strong ropes\*4

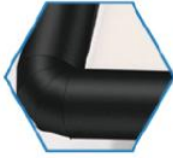


Blower\*1

## ASSEMBLY STEPS



①



②



③



Lay out frame, close deflation zipper and attach to the blower.

Turn on the blower, inflate in 2 minutes.

Attach the white screen to the black frame.

Let it stand up, attach the wind cord.

## COMPLETION





**Produttore:** Shanghai muxinmuyeyouxiangongsi

**Indirizzo:** Shuangchenglu 803nong11hao1602A-1609shi, baoshanqu, shanghai 200000 CN.

**Importato in AUS:** SIHAO PTY LTD. 1 ROKEVA STREET EASTWOOD NSW 2122 Australia

**Importato negli USA:** Sanven Technology Ltd. Suite 250, 9166 Anaheim Place, Rancho Cucamonga, CA 91730

<b>EC</b>	<b>REP</b>
-----------	------------

E-CrossStu GmbH  
Mainzer Landstr.69, 60329 Frankfurt am Main.

<b>UK</b>	<b>REP</b>
-----------	------------

YH CONSULTING LIMITED.  
C/O YH Consulting Limited Office 147, Centurion House, London Road, Staines-upon-Thames, Surrey, TW18 4AX



**VEVOR<sup>®</sup>**

**TOUGH TOOLS, HALF PRICE**

**Tecnico Supporto e certificato di garanzia elettronica**

**[www.vevor.com/support](http://www.vevor.com/support)**