

VEVOR[®]

TOUGH TOOLS, HALF PRICE

Technical Support and E-Warranty Certificate <https://www.vevor.com/support>

PROJECTION SCREEN

USER MANUAL

MODEL NO.:TLES100、 TLES120、 TL-100S-A

We continue to be committed to provide you tools with competitive price.

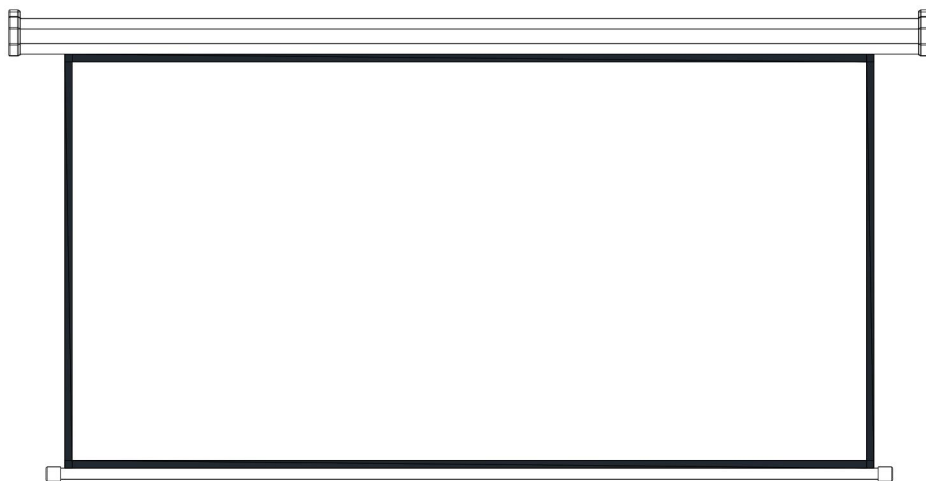
"Save Half", "Half Price" or any other similar expressions used by us only represents an estimate of savings you might benefit from buying certain tools with us compared to the major top brands and does not necessarily mean to cover all categories of tools offered by us. You are kindly reminded to verify carefully when you are placing an order with us if you are actually saving half in comparison with the top major brands.

VEVOR[®]

TOUGH TOOLS, HALF PRICE

Projection Screen

MODEL NO.: TLES100、TLES120、TL-100S-A



NEED HELP? CONTACT US!

Have product questions? Need technical support? Please feel free to contact us:

Technical Support and E-Warranty Certificate
www.vevor.com/support

This is the original instruction, please read all manual instructions carefully before operating. VEVOR reserves a clear interpretation of our user manual. The appearance of the product shall be subject to the product you received. Please forgive us that we won't inform you again if there are any technology or software updates on our product.

 **WARNING:**

Please read this manual carefully before using the product. Failure to do so may result in serious injury. SAVE THIS MANUAL

1. The screen cannot be folded. Do not use fingers or hard objects to touch the screen surface. Do not splash milk, fruit juice or other chemical doses to the screen surface. Keep the screen far away from high-temperature objects or fire.
2. If the screen is dirty, wash it gently with a clean cloth or a cotton ball. Do not use organic solvents to clean the screen surface.
3. When pulling the screen down, it must be done slowly and vertically. Do not pull it roughly. Stop pulling as soon as the black border is out or when the screen is jammed. Send the screen to the service center if the jam is permanent.
4. After using, retract the screen back to the housing in order to prevent dirt. If not used it for a long time, please remove the screen from the wall and pack it in a carton.

TECHNICAL SPECIFICATIONS

Model	TLES100	
Main Material	PVC	
Rating(s)	AC120V, 60Hz, 30W	AC220-240V, 50Hz, 30W
Screen Size	100 inch, 16:9	
Product Dimensions(LxWxH)	2465*80*1620 mm	
Packing Size(LxWxH)	2630*150*130 mm	
Net Weight (kg)	7.64	
Gross Weight (kg)	10.25	

Model	TLES120	
Main Material	PVC	
Rating(s)	AC120V, 60Hz, 30W	AC220-240V, 50Hz, 30W
Screen Size	120 inch, 16:9	
Product Dimensions(LxWxH)	2920*90*1900 mm	
Packing Size(LxWxH)	3070*150*130 mm	
Net Weight (kg)	9.77	
Gross Weight (kg)	12.92	

Model	TL-100S-A	
Main Material	PVC	
Control mode	Manual	
Screen Size	100 inch, 16:9	
Product Dimensions(LxWxH)	2330*80*1680 mm	
Packing Size(LxWxH)	2500*150*130 mm	
Net Weight (kg)	8	
Gross Weight (kg)	9.5	

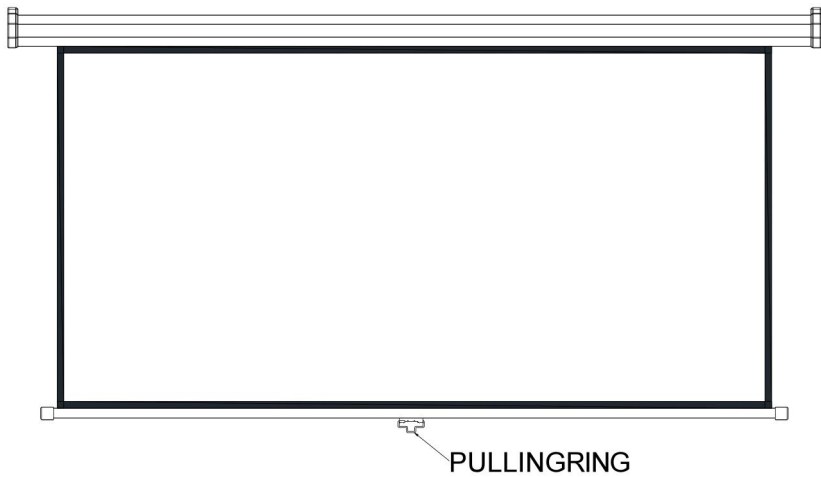
PACKAGE CONTENTS

MODEL NO.:

TLES100、TLES120

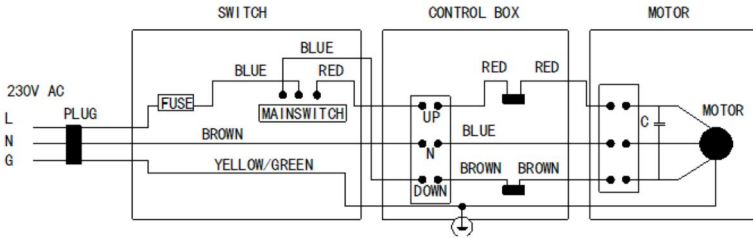


MODEL NO.: TL-100S-A

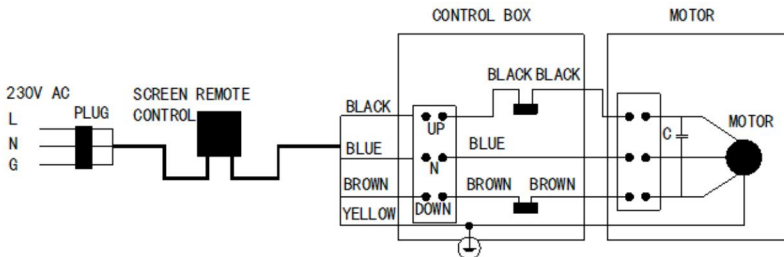


CIRCUIT DIAGRAMS

If the motorized screen work with manual switch, please refer to the diagram below for electric connection.



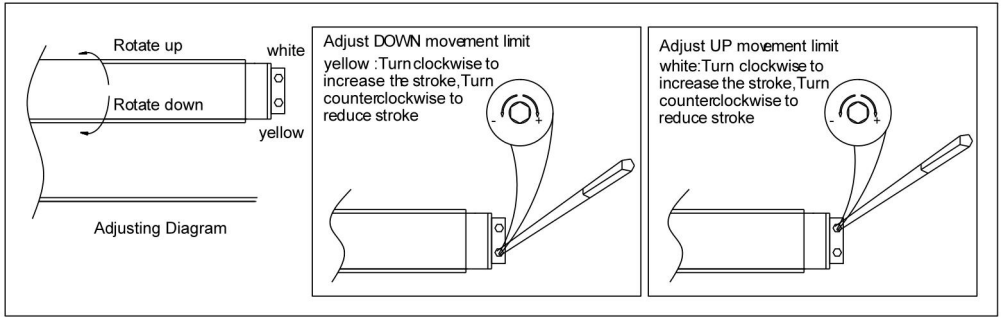
If the motorized screen work with remote control, please refer to the diagram below for electrical connection.



If the remote control does not work well, please check the battery
And replace new one.

ADJUST LIMIT SWITCH

Adjust position for the two limit journey, refer to picture below :



USEFUL INSTRUCTIONS

1. The screen should be switched to a suitable power supply, it can be 220V/ 50Hz 230V/ 50Hz or 110V/ 60Hz 120V/ 60Hz but the motor's power must be same as the local voltage and frequency
2. The screen can be used with or without the remote controller. The remote control system can be radio type or infrared type Normally if a remote control system is needed, a radio remote controller is supplied but an infrared type controller is also available for a special requirement. These two different controlling functions cannot be combined in one control system.
3. Normally a synchronized motor is installed inside the housing but a tubular motor is also available for a special requirement
4. If the remote control system is not accompanied. the screen can be operated by the control box directly. Just push the UP/DOWN /STOP button on the control box to operate the screen. Alternatively, the screen can be operated by the remote controller

Manufacturer: Shanghaimuxinmuyeyouxiangongsi

Address: Shuangchenglu 803nong11hao1602A-1609shi, baoshanqu, shanghai 200000 CN.

Imported to AUS: SIHAO PTY LTD. 1 ROKEVA STREETEASTWOOD NSW 2122 Australia

Imported to USA: Sanven Technology Ltd. Suite 250, 9166 Anaheim Place, Rancho Cucamonga, CA 91730

EC	REP
-----------	------------

E-CrossStu GmbH
Mainzer Landstr.69, 60329 Frankfurt am Main.

UK	REP
-----------	------------

YH CONSULTING LIMITED.
C/O YH Consulting Limited Office 147, Centurion House, London Road, Staines-upon-Thames, Surrey, TW18 4AX

VEVOR[®]

TOUGH TOOLS, HALF PRICE

Technical Support and E-Warranty Certificate

www.vevor.com/support

VEVOR[®]

TOUGH TOOLS, HALF PRICE

Techniczny Wsparcie i certyfikat gwarancji elektronicznej

<https://www.vevor.com/support>

EKRAN PROJEKCYJNY

INSTRUKCJA OBSŁUGI

NR MODELU: TLES100, TLES120, TL-100S-A

We continue to be committed to provide you tools with competitive price.

"Save Half", "Half Price" or any other similar expressions used by us only represents an estimate of savings you might benefit from buying certain tools with us compared to the major top brands and does not necessarily mean to cover all categories of tools offered by us. You are kindly reminded to verify carefully when you are placing an order with us if you are actually saving half in comparison with the top major brands.

VEVOR[®]

TOUGH TOOLS, HALF PRICE

Projection Screen

NR MODELU: TLES100, TLES120, TL-100S-A



NEED HELP? CONTACT US!

Have product questions? Need technical support? Please feel free to contact us:

Technical Support and E-Warranty Certificate
www.vevor.com/support

This is the original instruction, please read all manual instructions carefully before operating. VEVOR reserves a clear interpretation of our user manual. The appearance of the product shall be subject to the product you received. Please forgive us that we won't inform you again if there are any technology or software updates on our product.



OSTRZEŻENIE:

Przed użyciem produktu należy uważnie przeczytać tę instrukcję. Nieprzestrzeganie jej może spowodować poważne obrażenia.

ZACHOWAJ TĘ INSTRUKCJĘ

1. Ekranu nie można złożyć. Nie dotykaj powierzchni ekranu palcami ani twardymi przedmiotami. Nie rozchlapuj mleka, soku owocowego ani innych dawek chemicznych na powierzchnię ekranu. Trzymaj ekran z dala od przedmiotów o wysokiej temperaturze lub ognia.
2. Jeśli ekran jest brudny, umyj go delikatnie czystą szmatką lub wacikiem. Nie używaj rozpuszczalników organicznych do czyszczenia powierzchni ekranu.
3. Podczas ściągania ekranu w dół należy to robić powoli i pionowo. Nie ciągnij go gwałtownie. Przestań ciągnąć, gdy tylko czarna ramka zniknie lub gdy ekran się zatnie. Wyślij ekran do punktu serwisowego, jeśli zacięcie jest trwałe.
4. Po użyciu wsuń ekran z powrotem do obudowy, aby zapobiec zabrudzeniu. Jeśli nie używasz go przez dłuższy czas, zdejmij ekran ze ściany i zapakuj go w karton.

DANE TECHNICZNE

Model	TLES100	
Materiał główny	PCV	
Ocena(y)	AC120V, 60Hz, 30W	AC220-240V, 50Hz, 30W
Rozmiar ekranu	100 cali, 16:9	
Wymiary produktu (dł. x szer. x wys.)	Wymiary: 2465*80*1620 mm	
Rozmiar opakowania (dł. x szer. x wys.)	Wymiary: 2630*150*130 mm	

Masa netto (kg)	7,64
Masa brutto (kg)	10,25

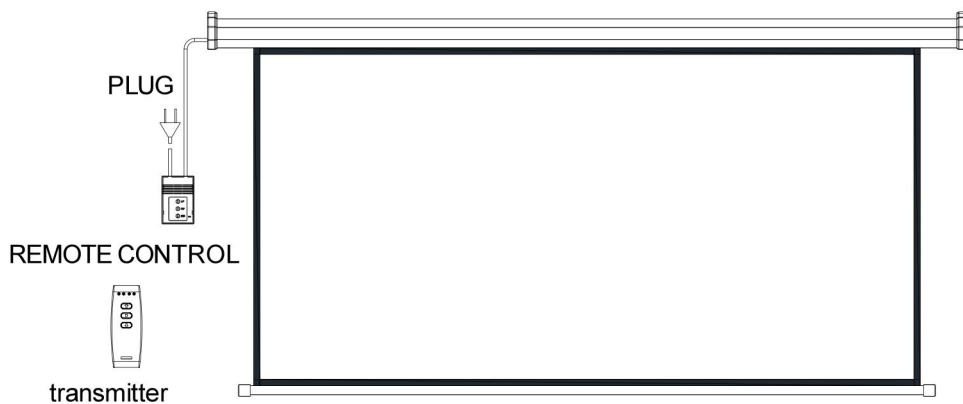
Model	TLES120	
Materiał główny	PCV	
Ocena(y)	AC120V, 60Hz, 30W	AC220-240V, 50Hz, 30W
Rozmiar ekranu	120 cali, 16:9	
Wymiary produktu (dł. x szer. x wys.)	Wymiary: 2920*90*1900 mm	
Rozmiar opakowania (dł. x szer. x wys.)	Wymiary: 3070*150*130 mm	
Masa netto (kg)	9,77	
Masa brutto (kg)	12,92	

Model	TL-100S-A	
Materiał główny	PCV	
Tryb sterowania	Podręcznik	
Rozmiar ekranu	100 cali, 16:9	
Wymiary produktu (dł. x szer. x wys.)	Wymiary: 2330*80*1680 mm	
Rozmiar opakowania (dł. x szer. x wys.)	2500*150*130 mm	
Masa netto (kg)	8	
Masa brutto (kg)	9,5	

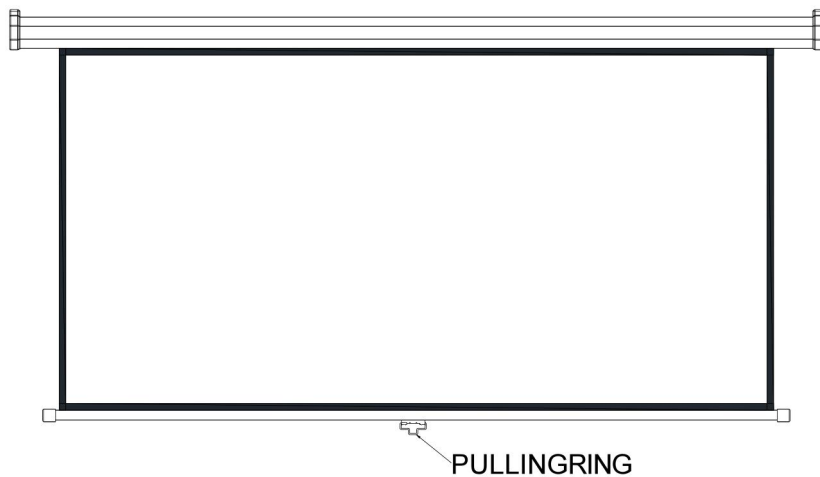
ZAWARTOŚĆ OPAKOWANIA

NR MODELU:

TLES100、TLES120

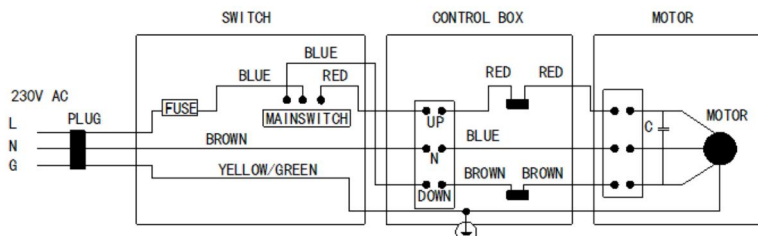


NR MODELU: TL-100S-A

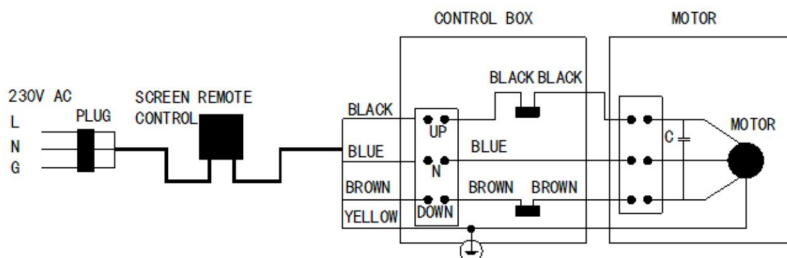


SCHEMATY OBWODÓW

Jeśli ekran sterowany silnikiem działa z przełącznikiem ręcznym, zapoznaj się z poniższym schematem dotyczącym podłączenia elektrycznego.



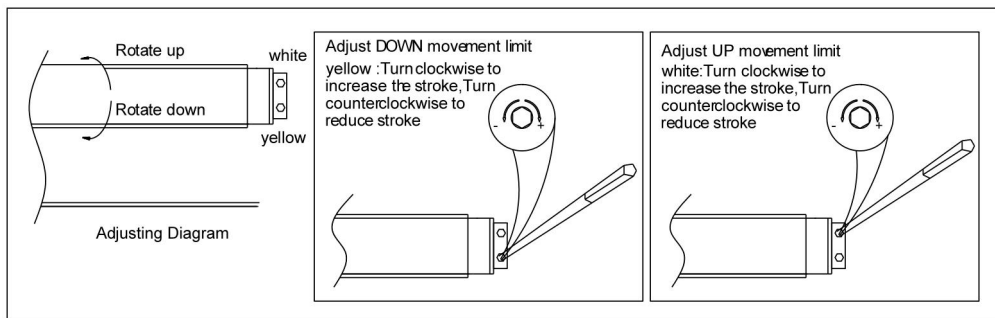
If the motorized screen work with remote control, please refer to the diagram below for electrical connection.



If the remote control does not work well, please check the battery
And replace new one.

REGULACJA WYŁĄCZNIKA KRAŃCOWEGO

Dostosuj położenie dla dwóch limitów podróży, patrz rysunek poniżej:



PRZYDATNE INSTRUKCJE

1. Ekran należy podłączyć do odpowiedniego źródła zasilania, może to być 220 V/50 Hz, 230 V/50 Hz lub 110 V/60 Hz lub 120 V/60 Hz, ale moc silnika musi być taka sama jak lokalne napięcie i częstotliwość.
2. Ekran można używać z pilotem zdalnego sterowania lub bez niego. System zdalnego sterowania może być typu radiowego lub podczerwieni. Zazwyczaj, jeśli potrzebny jest system zdalnego sterowania, dostarczany jest pilot radiowy, ale dostępny jest również kontroler podczerwieni na specjalne potrzeby. Te dwie różne funkcje sterowania nie mogą być łączone w jednym systemie sterowania.
3. Zwykle silnik synchroniczny montowany jest wewnątrz obudowy, ale w przypadku specjalnych wymagań dostępny jest również silnik rurowy
4. Jeśli system zdalnego sterowania nie jest dołączony, ekran można obsługiwać bezpośrednio za pomocą skrzynki sterowniczej. Aby obsługiwać ekran, wystarczy nacisnąć przycisk UP/DOWN/STOP na skrzynce sterowniczej. Alternatywnie ekran można obsługiwać za pomocą pilota zdalnego sterowania

Producent: Shanghaimuxinmuyeyouxiangongsi

Adres: Shuangchenglu 803nong11hao1602A-1609shi, baoshanqu, szanghaj 200000 CN.

Importowane do AUS: SIHAO PTY LTD. 1 ROKEVA
STREETEASTWOOD NSW 2122 Australia

Importowane do USA: Sanven Technology Ltd. Suite 250, 9166 Anaheim
Place, Rancho Cucamonga, CA 91730



E-CrossStu GmbH
Mainzer Landstr.69, 60329 Frankfurt am Main.



YH CONSULTING LIMITED.
C/O YH Consulting Limited Office 147, Centurion
House, London Road, Staines-upon-Thames, Surrey,
TW18 4AX

VEVOR[®]

TOUGH TOOLS, HALF PRICE

Techniczny Wsparcie i certyfikat e-gwarancji

www.vevor.com/support

VEVOR[®]

TOUGH TOOLS, HALF PRICE

Technisch Support und E-Garantie-Zertifikat <https://www.vevor.com/support>

PROJEKTIONSLEINWAND BENUTZERHANDBUCH

MODELLNR.: TLES100, TLES120, TL-100S-A

We continue to be committed to provide you tools with competitive price.

"Save Half", "Half Price" or any other similar expressions used by us only represents an estimate of savings you might benefit from buying certain tools with us compared to the major top brands and does not necessarily mean to cover all categories of tools offered by us. You are kindly reminded to verify carefully when you are placing an order with us if you are actually saving half in comparison with the top major brands.

VEVOR®

TOUGH TOOLS, HALF PRICE

Projection Screen

MODELL NR.: TLES100, TLES120, TL-100S-A



NEED HELP? CONTACT US!

Have product questions? Need technical support? Please feel free to contact us:

Technical Support and E-Warranty Certificate
www.vevor.com/support

This is the original instruction, please read all manual instructions carefully before operating. VEVOR reserves a clear interpretation of our user manual. The appearance of the product shall be subject to the product you received. Please forgive us that we won't inform you again if there are any technology or software updates on our product.

 **WARNUNG:**

Bitte lesen Sie dieses Handbuch sorgfältig durch, bevor Sie das Produkt verwenden. Andernfalls kann es zu schweren Verletzungen kommen. BEWAHREN SIE DIESES HANDBUCH AUF

1. Der Bildschirm kann nicht gefaltet werden. Berühren Sie die Bildschirmoberfläche nicht mit Fingern oder harten Gegenständen. Spritzen Sie keine Milch, Fruchtsäfte oder andere Chemikalien auf die Bildschirmoberfläche. Halten Sie den Bildschirm von heißen Gegenständen oder Feuer fern.
2. Wenn der Bildschirm schmutzig ist, waschen Sie ihn vorsichtig mit einem sauberen Tuch oder einem Wattebausch. Verwenden Sie zum Reinigen der Bildschirmoberfläche keine organischen Lösungsmittel.
3. Wenn Sie den Bildschirm nach unten ziehen, müssen Sie dies langsam und vertikal tun. Ziehen Sie nicht ruckartig. Hören Sie auf zu ziehen, sobald der schwarze Rand sichtbar ist oder der Bildschirm klemmt. Senden Sie den Bildschirm an das Servicecenter, wenn der Stau dauerhaft besteht.
4. Nach Gebrauch den Bildschirm wieder in das Gehäuse zurückschieben, um Verschmutzungen vorzubeugen. Bei längerer Nichtbenutzung den Bildschirm von der Wand abnehmen und in einen Karton verpacken.

TECHNISCHE DATEN

Modell	TLES100	
Hauptmaterial	aus PVC	
Bewertung(en)	Wechselstrom 120 V, 60 Hz, 30 W	AC 220–240 V, 50 Hz, 30 W
Bildschirmgröße	100 Zoll, 16:9	
Produktabmessungen (L x B x H)	2465*80*1620 mm	

Verpackungsgröße (L x B x H)	2630*150*130 mm
Nettogewicht (kg)	7,64
Bruttogewicht (kg)	10.25

Modell	TLES120	
Hauptmaterial	aus PVC	
Bewertung(en)	Wechselstrom 120 V, 60 Hz, 30 W	AC 220–240 V, 50 Hz, 30 W
Bildschirmgröße	120 Zoll, 16:9	
Produktabmessungen (L x B x H)	2920*90*1900 mm	
Verpackungsgröße (L x B x H)	3070*150*130 mm	
Nettogewicht (kg)	9,77	
Bruttogewicht (kg)	12,92	

Modell	TL-100S-A	
Hauptmaterial	aus PVC	
Steuerungsmodus	Handbuch	
Bildschirmgröße	100 Zoll, 16:9	
Produktabmessungen (L x B x H)	2330*80*1680 mm	
Verpackungsgröße (L x B x H)	2500*150*130 mm	
Nettogewicht (kg)	8	
Bruttogewicht (kg)	9,5	

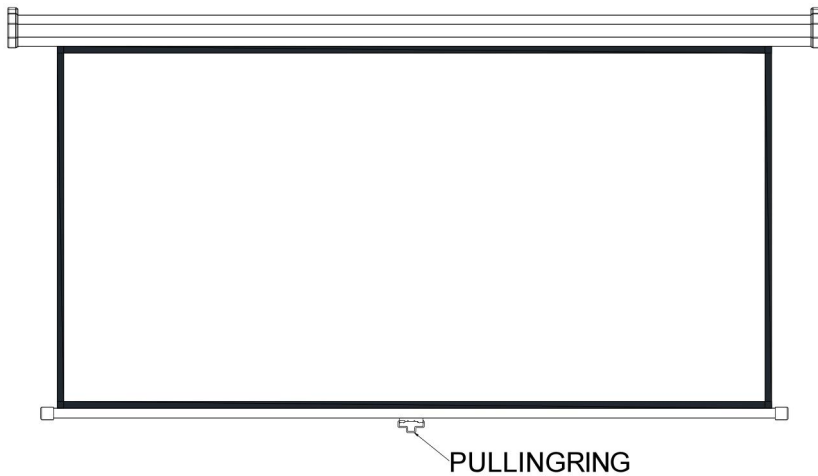
PACKUNGSINHALT

MODELL NR.:

TLES1 0 0 , TLES120

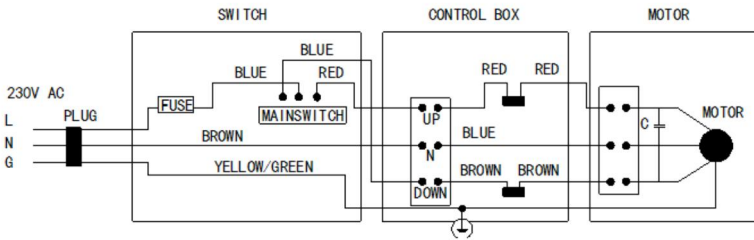


MODELL NR.: TL-100S-A

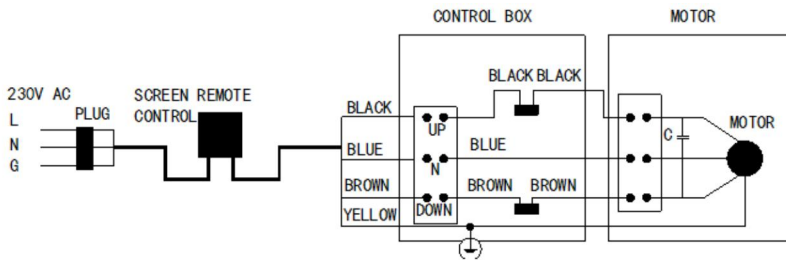


SCHALTPLÄNE

Wenn die motorisierte Leinwand mit einem manuellen Schalter funktioniert, beachten Sie bitte das Diagramm unten für den elektrischen Anschluss.



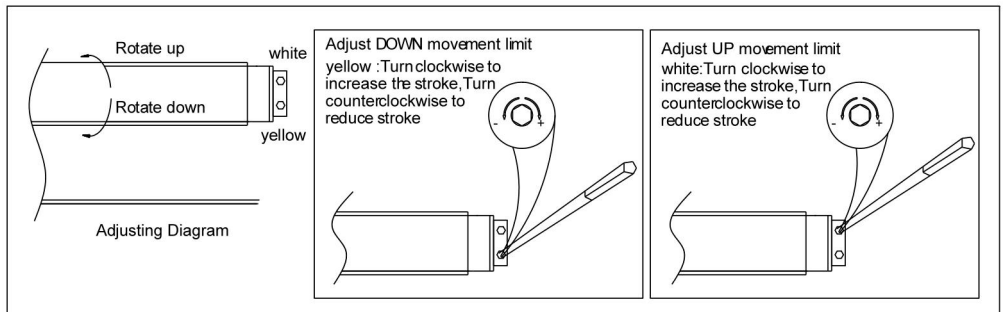
If the motorized screen work with remote control, please refer to the diagram below for electrical connection.



If the remote control does not work well, please check the battery
And replace new one.

ENDSCHALTER EINSTELLEN

Passen Sie die Position für die beiden Endlagen an, siehe Abbildung unten:



NÜTZLICHE ANWEISUNGEN

1. Der Bildschirm sollte an eine geeignete Stromversorgung angeschlossen werden. Diese kann 220 V/50 Hz, 230 V/50 Hz oder 110 V/60 Hz oder 120 V/60 Hz betragen. Die Leistung des Motors muss jedoch der örtlichen Spannung und Frequenz entsprechen.
2. Der Bildschirm kann mit oder ohne Fernbedienung verwendet werden. Das Fernbedienungssystem kann per Funk oder Infrarot betrieben werden. Wenn ein Fernbedienungssystem benötigt wird, wird normalerweise eine Funkfernbedienung mitgeliefert, für besondere Anforderungen ist jedoch auch eine Infrarotfernbedienung erhältlich. Diese beiden unterschiedlichen Steuerungsfunktionen können nicht in einem Steuerungssystem kombiniert werden.
3. Normalerweise ist im Gehäuse ein Synchronmotor eingebaut, für besondere Anforderungen ist jedoch auch ein Rohrmotor erhältlich.
4. Wenn kein Fernbedienungssystem mitgeliefert wird, kann der Bildschirm direkt über die Steuerbox bedient werden. Drücken Sie einfach die AUF/AB/STOP-Taste an der Steuerbox, um den Bildschirm zu bedienen. Alternativ kann der Bildschirm auch über die Fernbedienung bedient werden.

Hersteller: Shanghaimuxinmuyeyouxiangongsi

Adresse: Shuangchenglu 803nong11hao1602A-1609shi, baoshanqu, Shanghai 200000 CN.

Nach AUS importiert: SIHAO PTY LTD. 1 ROKEVA
STREETEASTWOOD NSW 2122 Australien

Importiert in die USA: Sanven Technology Ltd. Suite 250, 9166 Anaheim Place, Rancho Cucamonga, CA 91730

EC	REP
-----------	------------

E-CrossStu GmbH
Mainzer Landstr.69, 60329 Frankfurt am Main.

UK	REP
-----------	------------

YH CONSULTING LIMITED.
C/O YH Consulting Limited Office 147, Centurion House, London Road, Staines-upon-Thames, Surrey, TW18 4AX

VEVOR[®]

TOUGH TOOLS, HALF PRICE

Technisch Support und E-Garantie-Zertifikat

www.vevor.com/support

VEVOR[®]

TOUGH TOOLS, HALF PRICE

Technique Certificat d'assistance et de garantie électronique

<https://www.vevor.com/support>

ÉCRAN DE PROJECTION

MANUEL D' UTILISATION

MODÈLE N° : TLES100, TLES120, TL-100S-A

We continue to be committed to provide you tools with competitive price.

"Save Half", "Half Price" or any other similar expressions used by us only represents an estimate of savings you might benefit from buying certain tools with us compared to the major top brands and does not necessarily mean to cover all categories of tools offered by us. You are kindly reminded to verify carefully when you are placing an order with us if you are actually saving half in comparison with the top major brands.

VEVOR[®]

TOUGH TOOLS, HALF PRICE

Projection Screen

MODÈLE N° : TLES100, TLES120, TL-100S-A



NEED HELP? CONTACT US!

Have product questions? Need technical support? Please feel free to contact us:

Technical Support and E-Warranty Certificate
www.vevor.com/support

This is the original instruction, please read all manual instructions carefully before operating. VEVOR reserves a clear interpretation of our user manual. The appearance of the product shall be subject to the product you received. Please forgive us that we won't inform you again if there are any technology or software updates on our product.

 **AVERTISSEMENT:**

Veuillez lire attentivement ce manuel avant d'utiliser le produit. Le non-respect de ces instructions peut entraîner des blessures graves.

CONSERVEZ CE MANUEL

1. L'écran ne peut pas être plié. N'utilisez pas les doigts ou des objets durs pour toucher la surface de l'écran. Ne projetez pas de lait, de jus de fruits ou d'autres produits chimiques sur la surface de l'écran. Gardez l'écran loin des objets à haute température ou du feu.
2. Si l'écran est sale, lavez-le délicatement avec un chiffon propre ou un coton. N'utilisez pas de solvants organiques pour nettoyer la surface de l'écran.
3. Lorsque vous tirez l'écran vers le bas, faites-le lentement et verticalement. Ne tirez pas brusquement. Arrêtez de tirer dès que la bordure noire disparaît ou lorsque l'écran est bloqué. Envoyez l'écran au centre de service si le blocage est permanent.
4. Après utilisation, remplacez l'écran dans son boîtier afin d'éviter qu'il ne se salisse. Si vous ne l'utilisez pas pendant une longue période, retirez l'écran du mur et emballez-le dans un carton.

CARACTÉRISTIQUES TECHNIQUES

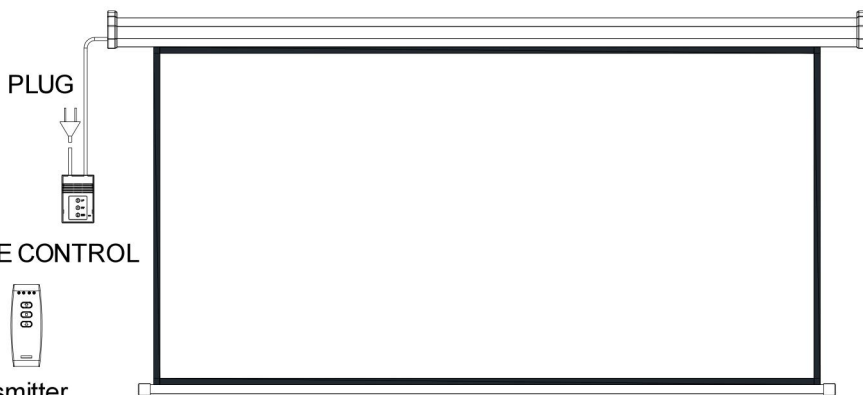
Modèle	TLES100	
Matériau principal	PVC	
Note(s)	CA 120 V, 60 Hz, 30 W	CA 220-240 V, 50 Hz, 30 W
Taille de l' écran	100 pouces, 16:9	
Dimensions du produit (L x l x H)	2465*80*1620 mm	
Taille de l'emballage (L x l x H)	2630*150*130 mm	
Poids net (kg)	7.64	
Poids brut (kg)	10.25	

Modèle	TLES120	
Matériau principal	PVC	
Note(s)	CA 120 V, 60 Hz, 30 W	CA 220-240 V, 50 Hz, 30 W
Taille de l' écran	120 pouces, 16:9	
Dimensions du produit (L x l x H)	2920*90*1900 mm	
Taille de l'emballage (L x l x H)	3070*150*130 mm	
Poids net (kg)	9,77	
Poids brut (kg)	12.92	

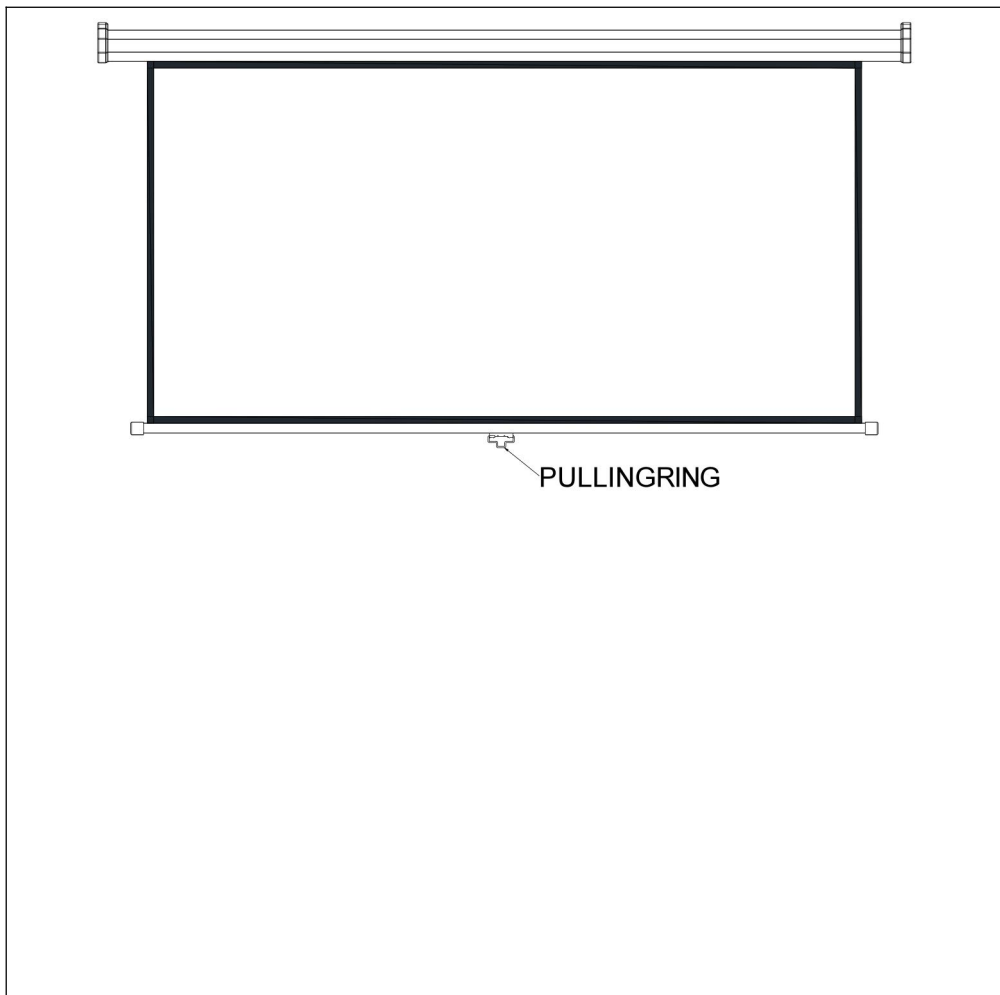
Modèle	TL-100S-A	
Matériau principal	PVC	
Mode de contrôle	Manuel	
Taille de l' écran	100 pouces, 16:9	
Dimensions du produit (L x l x H)	2330*80*1680 mm	
Taille de l'emballage (L x l x H)	2500*150*130 mm	
Poids net (kg)	8	
Poids brut (kg)	9.5	

CONTENU DU COLIS

MODÈLE N° :
TLES1 0 0 , TLES120

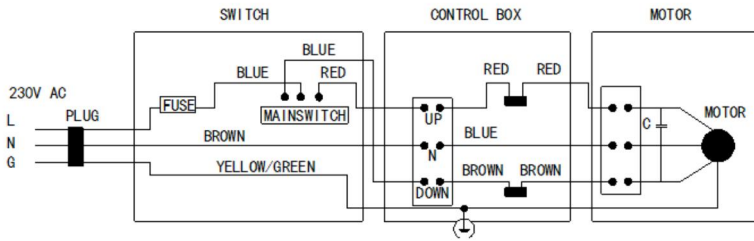


MODÈLE N° : TL-100S-A

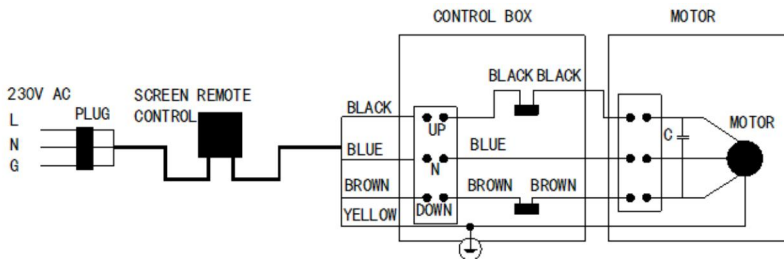


SCHÉMAS DE CIRCUITS

Si l'écran motorisé fonctionne avec un interrupteur manuel, veuillez vous référer au schéma ci-dessous pour le raccordement électrique.



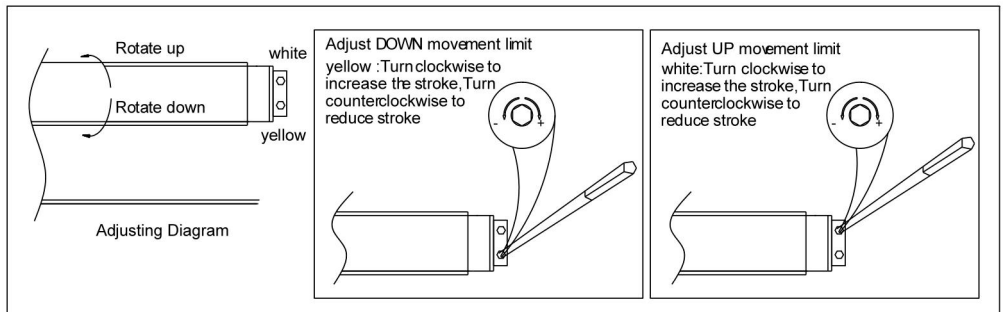
If the motorized screen work with remote control, please refer to the diagram below for electrical connection.



If the remote control does not work well, please check the battery
And replace new one.

RÉGLER L'INTERRUPTEUR DE FIN DE COURSE

Réglez la position pour le trajet à deux limites, reportez-vous à l'image ci-dessous :



INSTRUCTIONS UTILES

1. L'écran doit être commuté sur une alimentation électrique appropriée, elle peut être de 220 V/50 Hz, 230 V/50 Hz ou 110 V/60 Hz, 120 V/60 Hz, mais la puissance du moteur doit être identique à la tension et à la fréquence locales.
2. L'écran peut être utilisé avec ou sans la télécommande. Le système de télécommande peut être de type radio ou de type infrarouge. Normalement, si un système de télécommande est nécessaire, une télécommande radio est fournie, mais un contrôleur de type infrarouge est également disponible pour une exigence particulière. Ces deux fonctions de contrôle différentes ne peuvent pas être combinées dans un seul système de contrôle.
3. Normalement, un moteur synchronisé est installé à l'intérieur du boîtier, mais un moteur tubulaire est également disponible pour une exigence particulière.
4. Si le système de télécommande n'est pas fourni, l'écran peut être commandé directement par le boîtier de commande. Il suffit d'appuyer sur le bouton UP/DOWN/STOP du boîtier de commande pour faire fonctionner l'écran. Alternativement, l'écran peut être commandé par la télécommande

Fabricant : Shanghaimuxinmuyeyouxiangongsi

Adresse : Shuangchenglu 803nong11hao1602A-1609shi, baoshanqu, Shanghai 200000 CN.

Importé en Australie : SIHAO PTY LTD. 1 ROKEVA
STREETEASTWOOD NSW 2122 Australie

Importé aux États-Unis : Sanven Technology Ltd. Suite 250, 9166
Anaheim Place, Rancho Cucamonga, CA 91730

EC	REP
-----------	------------

E-CrossStu GmbH
Mainzer Landstr.69, 60329 Frankfurt am Main.

UK	REP
-----------	------------

YH CONSULTING LIMITED.
C/O YH Consulting Limited Office 147, Centurion
House, London Road, Staines-upon-Thames, Surrey,
TW18 4AX

VEVOR[®]

TOUGH TOOLS, HALF PRICE

Technique Certificat d'assistance et de garantie électronique

www.vevor.com/support

VEVOR[®]

TOUGH TOOLS, HALF PRICE

Technisch Ondersteuning en E-garantiecertificaat <https://www.vevor.com/support>

PROJECTIESCHERM

GEBRUIKSAANWIJZING

MODELNUMMER: TLES100, TLES120, TL-100S-A

We continue to be committed to provide you tools with competitive price.

"Save Half", "Half Price" or any other similar expressions used by us only represents an estimate of savings you might benefit from buying certain tools with us compared to the major top brands and does not necessarily mean to cover all categories of tools offered by us. You are kindly reminded to verify carefully when you are placing an order with us if you are actually saving half in comparison with the top major brands.

VEVOR®

TOUGH TOOLS, HALF PRICE

Projection Screen

MODELNUMMER: TLES100, TLES120, TL-100S-A



NEED HELP? CONTACT US!

Have product questions? Need technical support? Please feel free to contact us:

Technical Support and E-Warranty Certificate
www.vevor.com/support

This is the original instruction, please read all manual instructions carefully before operating. VEVOR reserves a clear interpretation of our user manual. The appearance of the product shall be subject to the product you received. Please forgive us that we won't inform you again if there are any technology or software updates on our product.

WAARSCHUWING:

Lees deze handleiding zorgvuldig door voordat u het product gebruikt. Als u dit niet doet, kan dit leiden tot ernstig letsel. BEWAAR DEZE HANDLEIDING

1. Het scherm kan niet worden gevouwen. Raak het schermoppervlak niet aan met uw vingers of harde voorwerpen. Spat geen melk, vruchtensap of andere chemische stoffen op het schermoppervlak. Houd het scherm ver weg van hete voorwerpen of vuur.
2. Als het scherm vuil is, was het dan voorzichtig met een schone doek of een wattenbolletje. Gebruik geen organische oplosmiddelen om het schermoppervlak schoon te maken.
3. Wanneer u het scherm naar beneden trekt, moet u dit langzaam en verticaal doen. Trek er niet ruw aan. Stop met trekken zodra de zwarte rand eruit is of wanneer het scherm vastzit. Stuur het scherm naar het servicecentrum als de vastgelopen scherm permanent is.
4. Trek het scherm na gebruik terug in de behuizing om vuil te voorkomen. Als u het langere tijd niet gebruikt, verwijder het scherm dan van de muur en verpak het in een doos.

TECHNISCHE SPECIFICATIES

Model	TLES100	
Hoofdmateriaal	PVC	
Beoordeling(en)	AC120V, 60Hz, 30W	AC220-240V, 50Hz, 30W
Schermgrootte	100 inch, 16:9	
Productafmetingen (LxBxH)	2465*80* 1620mm	
Verpakkingsgrootte (LxBxH)	2630*150*130mm	
Nettogewicht (kg)	7.64	
Brutogewicht (kg)	10.25	

Model	TLES120	
Hoofdmateriaal	PVC	
Beoordeling(en)	AC120V, 60Hz, 30W	AC220-240V, 50Hz, 30W
Schermgrootte	120 inch, 16:9	
Productafmetingen (LxBxH)	2920*90* 1900mm	
Verpakkingsgrootte (LxBxH)	3070*150*130mm	
Nettogewicht (kg)	9.77	
Brutogewicht (kg)	12.92	

Model	TL-100S-A	
Hoofdmateriaal	PVC	
Controlemodus	Handmatig	
Schermgrootte	100 inch, 16:9	
Productafmetingen (LxBxH)	2330*80* 1680mm	
Verpakkingsgrootte (LxBxH)	2500*150*130mm	
Nettogewicht (kg)	8	
Brutogewicht (kg)	9.5	

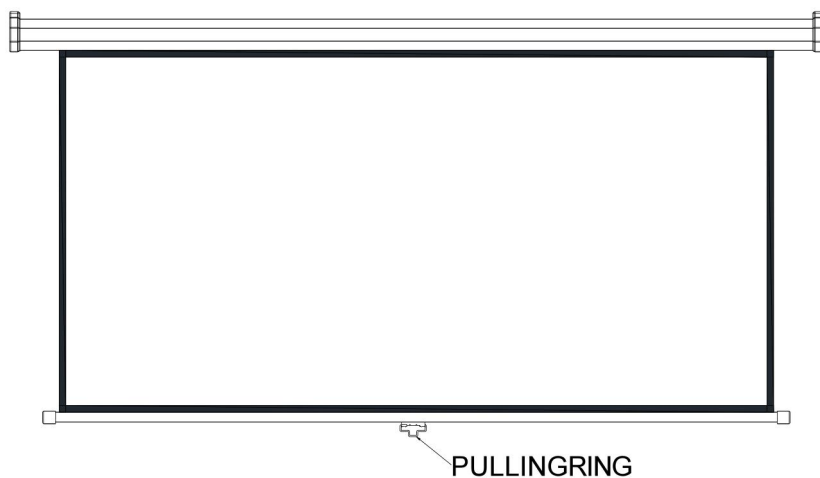
INHOUD VAN HET PAKKET

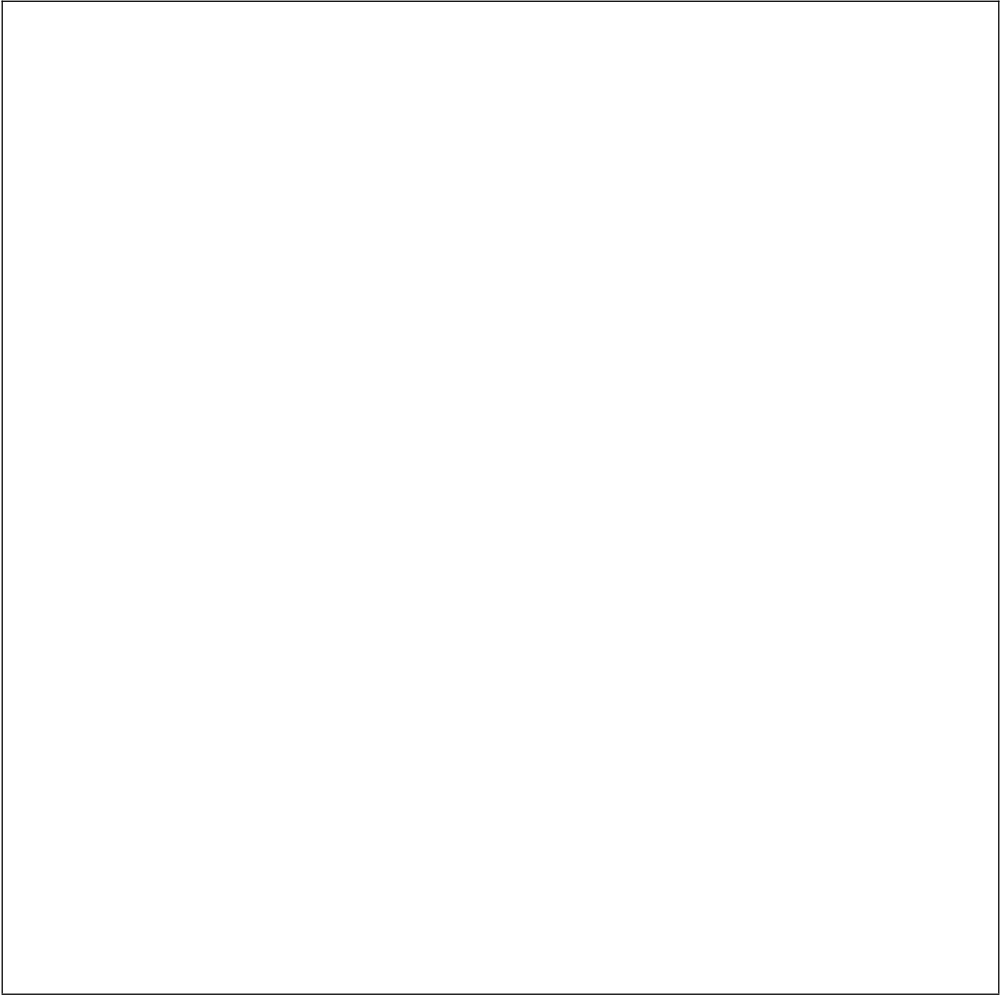
MODELNUMMER:

TLES1 0 0 en TLES120



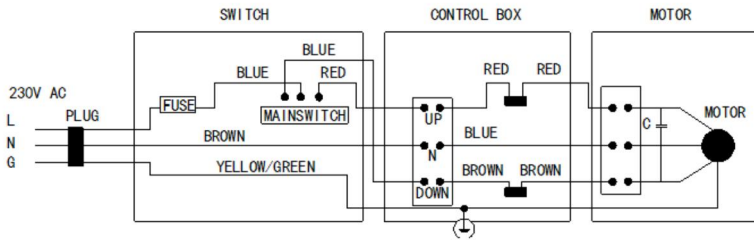
MODELNUMMER: TL-100S-A



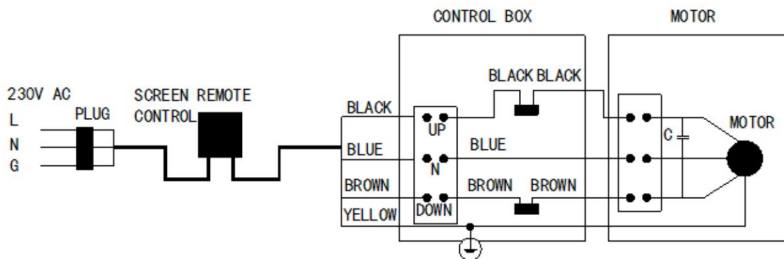


CIRCUITSCHEMA'S

Als het gemotoriseerde scherm met een handmatige schakelaar werkt, raadpleeg dan het onderstaande schema voor de elektrische aansluiting.



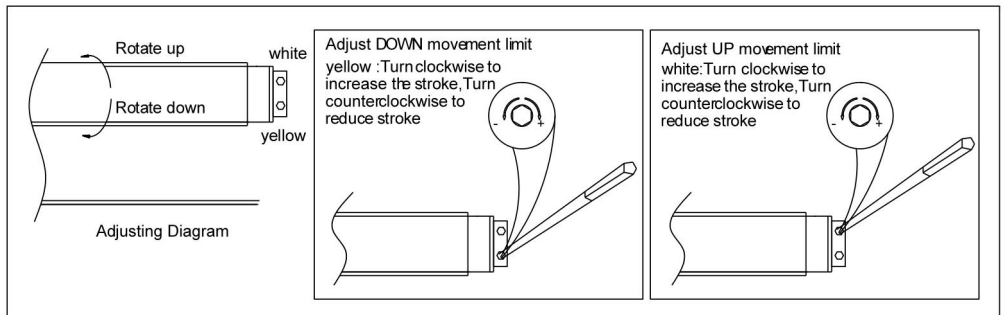
If the motorized screen work with remote control, please refer to the diagram below for electrical connection.



If the remote control does not work well, please check the battery
And replace new one.

EINDSCHAKELAAR AANPASSEN

Pas de positie aan voor de twee limietritten, zie onderstaande afbeelding:



HANDIGE INSTRUCTIES

1. Het scherm moet worden aangesloten op een geschikte voeding, dit kan 220V/50Hz, 230V/50Hz of 110V/60Hz, 120V/60Hz zijn, maar het

vermogen van de motor moet hetzelfde zijn als de lokale spanning en frequentie.

2. Het scherm kan met of zonder de afstandsbediening worden gebruikt. Het afstandsbedieningssysteem kan van het radiotype of het infraroodtype zijn. Normaal gesproken wordt er, als er een afstandsbedieningssysteem nodig is, een radiografische afstandsbediening meegeleverd, maar er is ook een infraroodcontroller beschikbaar voor een speciale vereiste. Deze twee verschillende besturingsfuncties kunnen niet in één besturingssysteem worden gecombineerd.
3. Normaal gesproken wordt er een gesynchroniseerde motor in de behuizing geïnstalleerd, maar voor speciale vereisten is ook een buismotor beschikbaar
4. Als het afstandsbedieningssysteem niet wordt meegeleverd, kan het scherm rechtstreeks worden bediend via de bedieningskast. Druk gewoon op de knop UP/DOWN/STOP op de bedieningskast om het scherm te bedienen. Als alternatief kan het scherm worden bediend via de afstandsbediening

Fabrikant: Shanghaimuxinmuyeyouxiangongsi

Adres: Shuangchenglu 803nong11hao1602A-1609shi, baoshanqu, shanghai 200000 CN.

Geïmporteerd naar AUS: SIHAO PTY LTD. 1 ROKEVA STREETEASTWOOD NSW 2122 Australië

Geïmporteerd naar de VS: Sanven Technology Ltd. Suite 250, 9166 Anaheim Place, Rancho Cucamonga, CA 91730

EC	REP
-----------	------------

E-CrossStu GmbH
Mainzer Landstr.69, 60329 Frankfurt am Main.

UK	REP
-----------	------------

YH CONSULTING LIMITED.
C/O YH Consulting Limited Office 147, Centurion House, London Road, Staines-upon-Thames, Surrey, TW18 4AX

VEVOR[®]

TOUGH TOOLS, HALF PRICE

Technisch Ondersteuning en E-garantiecertificaat

www.vevor.com/support

VEVOR®

TOUGH TOOLS, HALF PRICE

Teknisk Support och e-garanticertifikat <https://www.vevor.com/support>

PROJEKTIONSDUK

ANVÄNDARMANUAL

MODELLNR: TLES100, TLES120, TL-100S-A

We continue to be committed to provide you tools with competitive price.

"Save Half", "Half Price" or any other similar expressions used by us only represents an estimate of savings you might benefit from buying certain tools with us compared to the major top brands and does not necessarily mean to cover all categories of tools offered by us. You are kindly reminded to verify carefully when you are placing an order with us if you are actually saving half in comparison with the top major brands.

VEVOR®

TOUGH TOOLS, HALF PRICE

Projection Screen

MODELLNR: TLES100, TLES120, TL-100S-A



NEED HELP? CONTACT US!

Have product questions? Need technical support? Please feel free to contact us:

Technical Support and E-Warranty Certificate
www.vevor.com/support

This is the original instruction, please read all manual instructions carefully before operating. VEVOR reserves a clear interpretation of our user manual. The appearance of the product shall be subject to the product you received. Please forgive us that we won't inform you again if there are any technology or software updates on our product.

 **VARNING:**

Läs denna bruksanvisning noggrant innan du använder produkten. Underlåtenhet att göra det kan leda till allvarliga skador. SPARA DENNA MANUAL

1. Skärmen kan inte vikas. Använd inte fingrar eller hårda föremål för att vidröra skärmytan. Stänk inte mjölk, fruktjuice eller andra kemikaliedoser till skärmens yta. Håll skärmen långt borta från föremål med hög temperatur eller eld.
2. Om skärmen är smutsig, tvätta den försiktigt med en ren trasa eller en bomullstuss. Använd inte organiska lösningsmedel för att rengöra skärmens yta.
3. När du drar ner skärmen måste det göras långsamt och vertikalt. Dra inte grovt i den. Sluta dra så snart den svarta kanten är borta eller när skärmen har fastnat. Skicka skärmen till servicecentret om pappersstoppet är permanent.
4. Efter användning drar du tillbaka skärmen till huset för att förhindra smuts. Om den inte har använts under en längre tid, ta bort skärmen från väggen och packa den i en kartong.

TEKNISKA SPECIFIKATIONER

Modell	TLES100	
Huvudmaterial	PVC	
Betyg(er)	AC120V, 60Hz, 30W	AC220-240V, 50Hz, 30W
S skärmstorlek	100 tum, 16:9	
Produktmått (LxBxH)	2465*80*1620 mm	
Förpackningsstorlek (LxBxH)	2630*150*130 mm	
Nettovikt (kg)	7,64	
Bruttovikt (kg)	10.25	

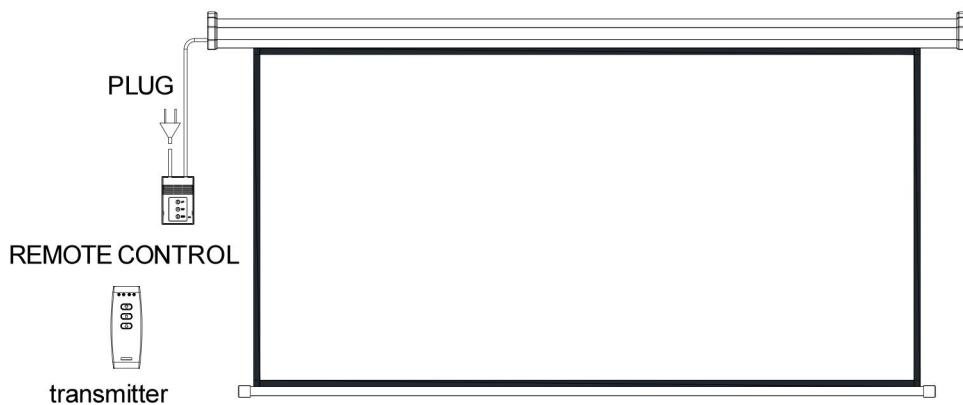
Modell	TLES120	
Huvudmaterial	PVC	
Betyg(er)	AC120V, 60Hz, 30W	AC220-240V, 50Hz, 30W
S skärmstorlek	120 tum, 16:9	
Produktmått (LxBxH)	2920*90*1900 mm	
Förpackningsstorlek (LxBxH)	3070*150*130 mm	
Nettovikt (kg)	9,77	
Bruttovikt (kg)	12,92	

Modell	TL-100S-A	
Huvudmaterial	PVC	
Kontrollläge	Manuell	
S skärmstorlek	100 tum, 16:9	
Produktmått (LxBxH)	2330*80*1680 mm	
Förpackningsstorlek (LxBxH)	2500*150*130 mm	
Nettovikt (kg)	8	
Bruttovikt (kg)	9.5	

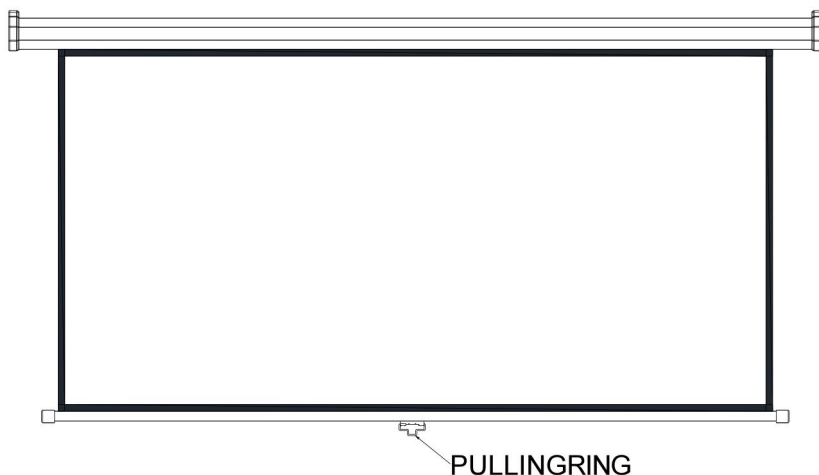
PAKETETS INNEHÅLL

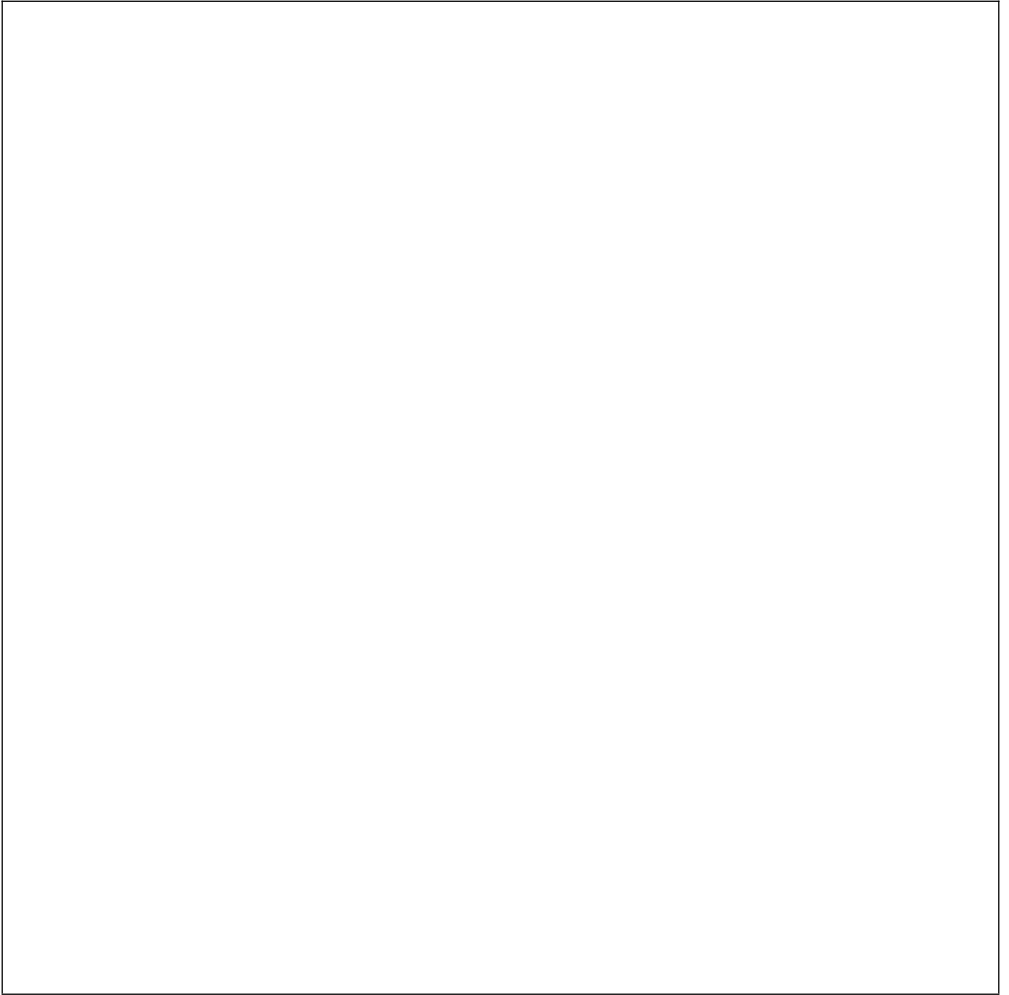
MODELLNR:

TLES100、TLES120



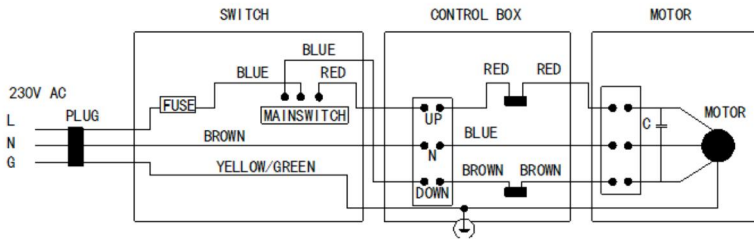
MODELLNR: TL-100S-A



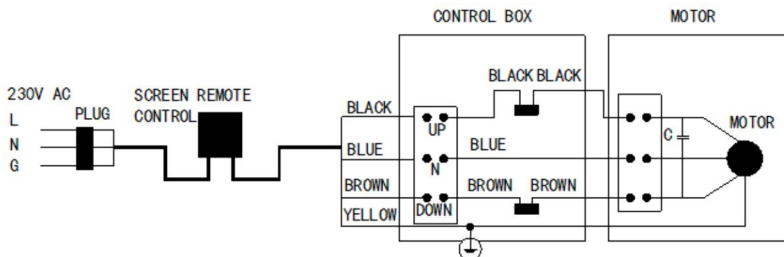


KRETSDIAGRAM

Om den motoriserade skärmen fungerar med manuell strömbrytare, se diagrammet nedan för elektrisk anslutning.



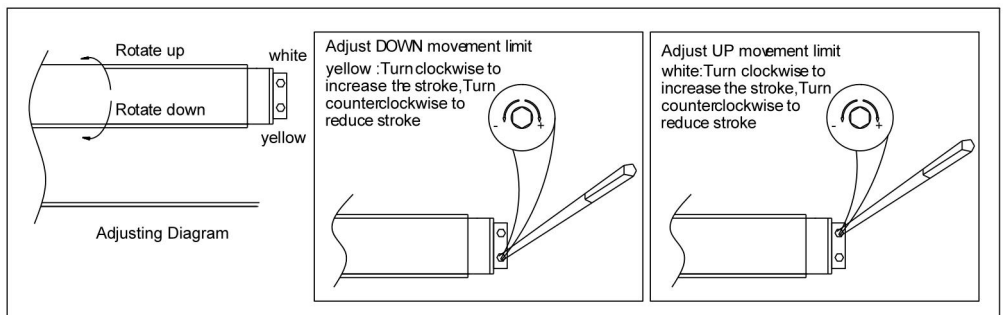
If the motorized screen work with remote control, please refer to the diagram below for electrical connection.



If the remote control does not work well, please check the battery
And replace new one.

JUSTERA GRÄNSBRYTARE

Justera positionen för resan med två gränser, se bilden nedan:



ANVÄNDbara INSTRUKTIONER

1. Skärmen bör kopplas om till en lämplig strömkälla, den kan vara 220V/50Hz 230V/50Hz eller 110V/60Hz 120V/60Hz men motorns effekt

- måste vara densamma som den lokala spänningen och frekvensen
2. Skärmen kan användas med eller utan fjärrkontrollen. Fjärrkontrollsystemet kan vara av radiotyp eller infraröd typ. Normalt om ett fjärrkontrollsystem behövs, levereras en radiofjärrkontroll men en infraröd typkontroll finns också tillgänglig för särskilda behov. Dessa två olika styrfunktioner kan inte kombineras i ett styrsystem.
 3. Normalt installeras en synkroniserad motor inuti höljet, men en rörformig motor finns också tillgänglig för särskilda behov
 4. Om fjärrkontrollsystemet inte åtföljs, skärmen kan styras direkt av kontrollboxen. Tryck bara på UPP/NER/STOPP-knappen på kontrollboxen för att styra skärmen. Alternativt kan skärmen styras av fjärrkontrollen

Tillverkare: Shanghaimuxinmuyeyouxiangongsi

Adress: Shuangchenglu 803nong11hao1602A-1609shi, baoshanqu, shanghai 200000 CN.

Importerad till AUS: SIHAO PTY LTD. 1 ROKEVA STREETEASTWOOD

NSW 2122 Australien

Importerad till USA: Sanven Technology Ltd. Suite 250, 9166 Anaheim Place, Rancho Cucamonga, CA 91730

EC	REP
-----------	------------

E-CrossStu GmbH
Mainzer Landstr.69, 60329 Frankfurt am Main.

UK	REP
-----------	------------

YH CONSULTING LIMITED.
C/O YH Consulting Limited Office 147, Centurion House, London Road, Staines-upon-Thames, Surrey, TW18 4AX

VEVOR[®]

TOUGH TOOLS, HALF PRICE

Teknisk Support och e-garanticertifikat

www.vevor.com/support

VEVOR[®]

TOUGH TOOLS, HALF PRICE

Técnico Certificado de soporte y garantía electrónica

<https://www.vevor.com/support>

PANTALLA DE PROYECCIÓN

MANUAL DEL USUARIO

N.º DE MODELO: TLES100, TLES120, TL-100S-A

We continue to be committed to provide you tools with competitive price.

"Save Half", "Half Price" or any other similar expressions used by us only represents an estimate of savings you might benefit from buying certain tools with us compared to the major top brands and does not necessarily mean to cover all categories of tools offered by us. You are kindly reminded to verify carefully when you are placing an order with us if you are actually saving half in comparison with the top major brands.

VEVOR®

TOUGH TOOLS, HALF PRICE

Projection Screen

NÚMERO DE MODELO: TLES100, TLES120 y TL-100S-A



NEED HELP? CONTACT US!

Have product questions? Need technical support? Please feel free to contact us:

Technical Support and E-Warranty Certificate
www.vevor.com/support

This is the original instruction, please read all manual instructions carefully before operating. VEVOR reserves a clear interpretation of our user manual. The appearance of the product shall be subject to the product you received. Please forgive us that we won't inform you again if there are any technology or software updates on our product.

 **ADVERTENCIA:**

Lea atentamente este manual antes de utilizar el producto. De lo contrario, podría sufrir lesiones graves. GUARDE ESTE MANUAL

1. La pantalla no se puede plegar. No use los dedos ni objetos duros para tocar la superficie de la pantalla. No salpique leche, jugo de frutas ni otras sustancias químicas sobre la superficie de la pantalla. Mantenga la pantalla alejada de objetos a altas temperaturas o del fuego.
2. Si la pantalla está sucia, lávela suavemente con un paño limpio o una bolita de algodón. No utilice disolventes orgánicos para limpiar la superficie de la pantalla.
3. Al tirar de la pantalla hacia abajo, debe hacerlo lentamente y en forma vertical. No tire de ella con brusquedad. Deje de tirar tan pronto como salga el borde negro o cuando la pantalla esté atascada. Envíe la pantalla al centro de servicio si el atasco es permanente.
4. Después de utilizarlo, vuelva a colocar la pantalla en la carcasa para evitar que se ensucie. Si no lo va a utilizar durante un tiempo prolongado, retire la pantalla de la pared y empaquétela en una caja de cartón.

ESPECIFICACIONES TÉCNICAS

Modelo	TLES100	
Material principal	CLORURO DE POLIVINILO	
Calificación(es)	CA 120 V, 60 Hz, 30 W	CA 220-240 V, 50 Hz, 30 W
Tamaño de la pantalla	100 pulgadas, 16:9	
Dimensiones del producto (LxAnxAI)	2465*80*1620 milímetros	
Tamaño del embalaje (LxAnxAI)	2630*150*130 milímetros	
Peso neto (kg)	7.64	
Peso bruto (kg)	10.25	

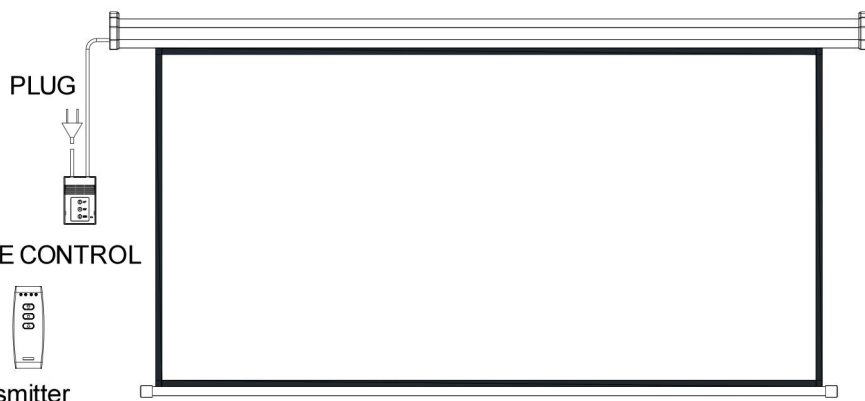
Modelo	TLES120	
Material principal	CLORURO DE POLIVINILO	
Calificación(es)	CA 120 V, 60 Hz, 30 W	CA 220-240 V, 50 Hz, 30 W
Tamaño de la pantalla	120 pulgadas, 16:9	
Dimensiones del producto (LxAnxAI)	2920*90*1900 milímetros	
Tamaño del embalaje (LxAnxAI)	3070*150*130 milímetros	
Peso neto (kg)	9,77	
Peso bruto (kg)	12,92	

Modelo	TL-100S-A	
Material principal	CLORURO DE POLIVINILO	
Modo de control	Manual	
Tamaño de la pantalla	100 pulgadas, 16:9	
Dimensiones del producto (LxAnxAI)	2330*80*1680 milímetros	
Tamaño del embalaje (LxAnxAI)	2500*150*130 milímetros	
Peso neto (kg)	8	
Peso bruto (kg)	9.5	

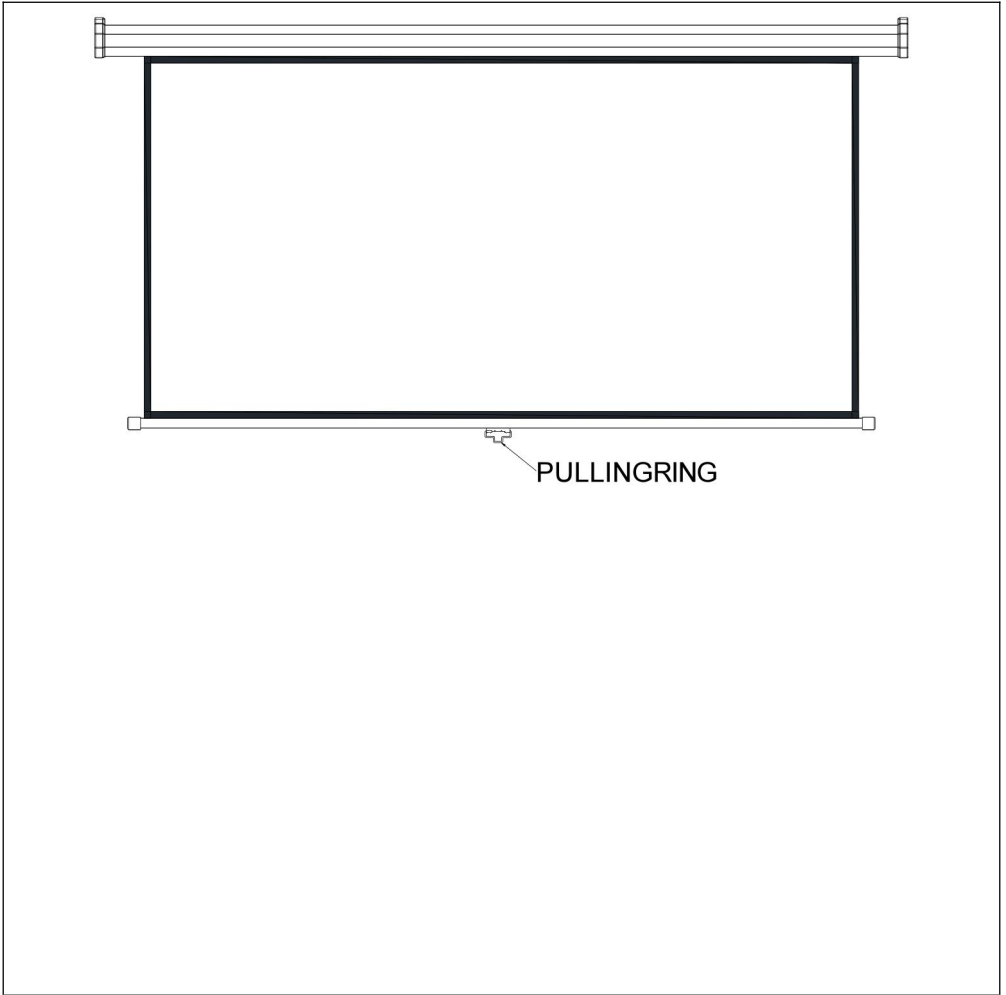
CONTENIDO DEL PAQUETE

NÚMERO DE MODELO:

TLES100 、 TLES120

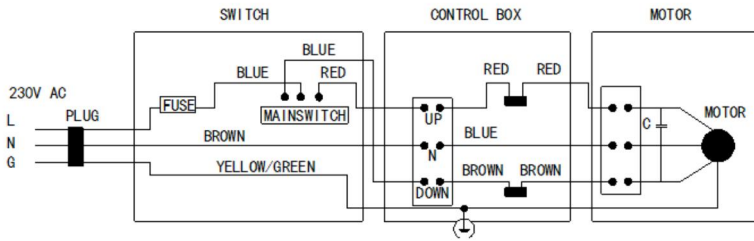


NÚMERO DE MODELO: TL-100S-A

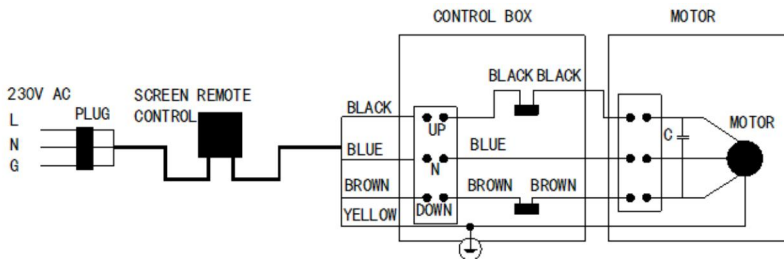


DIAGRAMAS DE CIRCUITO

Si la pantalla motorizada funciona con interruptor manual, consulte el diagrama a continuación para la conexión eléctrica.



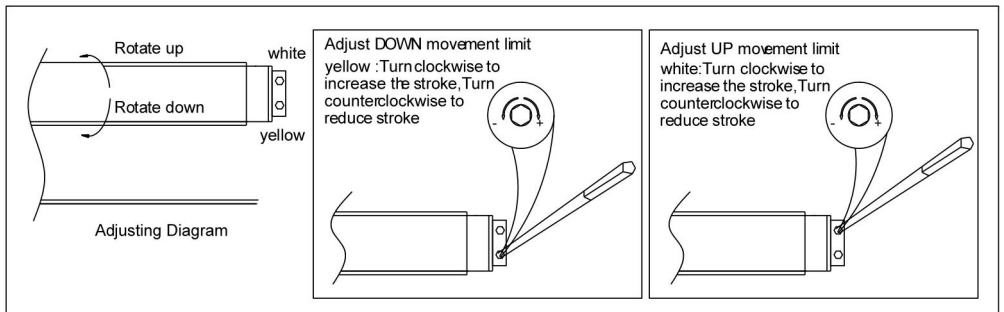
If the motorized screen work with remote control, please refer to the diagram below for electrical connection.



If the remote control does not work well, please check the battery
And replace new one.

AJUSTE DEL INTERRUPTOR DE FINAL DE CARRERA

Ajuste la posición para los dos recorridos límites, consulte la imagen a continuación:



INSTRUCCIONES ÚTILES

1. La pantalla debe conectarse a una fuente de alimentación adecuada, puede ser 220 V/50 Hz, 230 V/50 Hz o 110 V/60 Hz, 120 V/60 Hz, pero la potencia del motor debe ser la misma que el voltaje y la frecuencia locales.
2. La pantalla se puede utilizar con o sin el mando a distancia. El sistema de control remoto puede ser de tipo radio o de tipo infrarrojo. Normalmente, si se necesita un sistema de control remoto, se suministra un mando a distancia por radio, pero también está disponible un mando de tipo infrarrojo para requisitos especiales. Estas dos funciones de control diferentes no se pueden combinar en un solo sistema de control.
3. Normalmente se instala un motor sincronizado dentro de la carcasa, pero también está disponible un motor tubular para requisitos especiales.
4. Si no se incluye el sistema de control remoto, la pantalla se puede controlar directamente desde la caja de control. Simplemente presione el botón ARRIBA/ABAJO/PARADA en la caja de control para controlar la pantalla. Alternativamente, la pantalla se puede controlar mediante el control remoto.

Fabricante: Shanghaimuxinmuyeyouxiangongsi

Dirección: Shuangchenglu 803nong11hao1602A-1609shi, baoshanqu, shanghai 200000 CN.

Importado a AUS: SIHAO PTY LTD. 1 ROKEVA STREETEASTWOOD NSW 2122 Australia

Importado a EE. UU.: Sanven Technology Ltd. Suite 250, 9166 Anaheim Place, Rancho Cucamonga, CA 91730

EC	REP
-----------	------------

E-CrossStu GmbH
Mainzer Landstr.69, 60329 Frankfurt am Main.

UK	REP
-----------	------------

YH CONSULTING LIMITED.
C/O YH Consulting Limited Office 147, Centurion House, London Road, Staines-upon-Thames, Surrey, TW18 4AX

VEVOR[®]

TOUGH TOOLS, HALF PRICE

Técnico Certificado de soporte y garantía electrónica

www.vevor.com/support

VEVOR[®]

TOUGH TOOLS, HALF PRICE

Tecnico Supporto e certificato di garanzia elettronica

<https://www.vevor.com/support>

SCHERMO DI PROIEZIONE

MANUALE D' USO

MODELLO NUMERO: TLES100, TLES120, TL-100S-A

We continue to be committed to provide you tools with competitive price.

"Save Half", "Half Price" or any other similar expressions used by us only represents an estimate of savings you might benefit from buying certain tools with us compared to the major top brands and does not necessarily mean to cover all categories of tools offered by us. You are kindly reminded to verify carefully when you are placing an order with us if you are actually saving half in comparison with the top major brands.

VEVOR[®]

TOUGH TOOLS, HALF PRICE

Projection Screen

MODELLO NUMERO: TLES100、TLES120、TL-100S-A



NEED HELP? CONTACT US!

Have product questions? Need technical support? Please feel free to contact us:

Technical Support and E-Warranty Certificate
www.vevor.com/support

This is the original instruction, please read all manual instructions carefully before operating. VEVOR reserves a clear interpretation of our user manual. The appearance of the product shall be subject to the product you received. Please forgive us that we won't inform you again if there are any technology or software updates on our product.



AVVERTIMENTO:

Si prega di leggere attentamente questo manuale prima di utilizzare il prodotto. La mancata osservanza di questa precauzione potrebbe causare gravi lesioni. CONSERVARE QUESTO MANUALE

1. Lo schermo non può essere piegato. Non usare le dita o oggetti duri per toccare la superficie dello schermo. Non spruzzare latte, succo di frutta o altre dosi chimiche sulla superficie dello schermo. Tenere lo schermo lontano da oggetti ad alta temperatura o dal fuoco.
2. Se lo schermo è sporco, lavarlo delicatamente con un panno pulito o un batuffolo di cotone. Non usare solventi organici per pulire la superficie dello schermo.
3. Quando si tira lo schermo verso il basso, bisogna farlo lentamente e verticalmente. Non tirarlo bruscamente. Smettere di tirare non appena il bordo nero è fuori o quando lo schermo è inceppato. Inviare lo schermo al centro di assistenza se l'inceppamento è permanente.
4. Dopo l'uso, ritrarre lo schermo nell'alloggiamento per evitare che si sporchi. Se non lo si utilizza per un lungo periodo, rimuovere lo schermo dalla parete e imballarlo in una scatola.

SPECIFICHE TECNICHE

Modello	TLES100	
Materiale principale	PVC	
Valutazione(i)	CA 120 V, 60 Hz, 30 W	AC220-240V, 50Hz, 30W
Dimensioni dello schermo	100 pollici, 16:9	
Dimensioni del prodotto (LxWxH)	2465*80*1620 millimetri	
Dimensioni dell'imballaggio (LxWxH)	2630*150*130 millimetri	
Peso netto (kg)	7.64	

Peso lordo (kg)	10.25
-----------------	-------

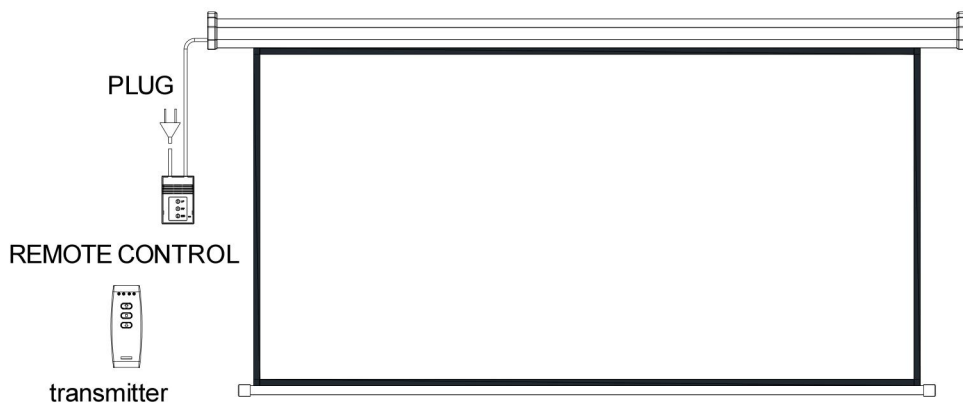
Modello	TLES120	
Materiale principale	PVC	
Valutazione(i)	CA 120 V, 60 Hz, 30 W	AC220-240V, 50Hz, 30W
Dimensioni dello schermo	120 pollici, 16:9	
Dimensioni del prodotto (LxWxH)	2920*90*1900 millimetri	
Dimensioni dell'imballaggio (LxWxH)	3070*150*130 millimetri	
Peso netto (kg)	9.77	
Peso lordo (kg)	12.92	

Modello	TL-100S-A	
Materiale principale	PVC	
Modalità di controllo	Manuale	
Dimensioni dello schermo	100 pollici, 16:9	
Dimensioni del prodotto (LxWxH)	2330*80*1680 millimetri	
Dimensioni dell'imballaggio (LxWxH)	2500*150*130 millimetri	
Peso netto (kg)	8	
Peso lordo (kg)	9.5	

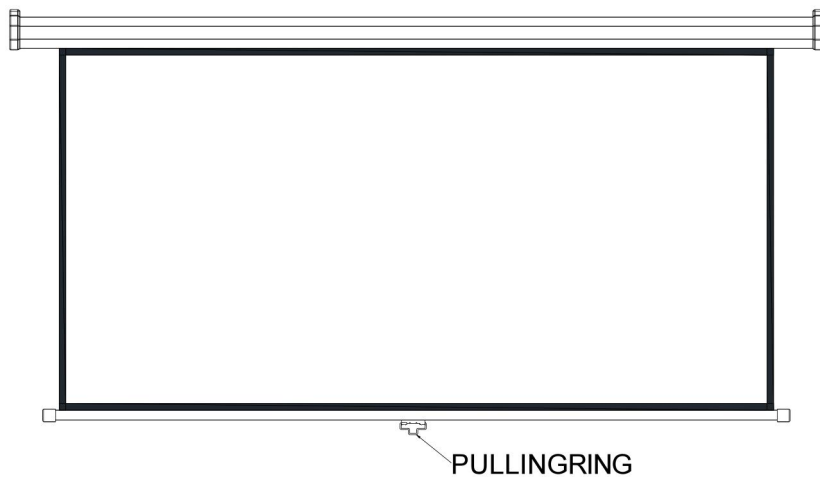
CONTENUTO DELLA CONFEZIONE

MODELLO NUMERO:

TLES100、TLES120

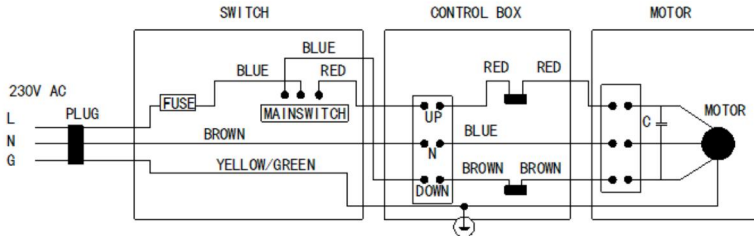


MODELLO NUMERO: TL-100S-A

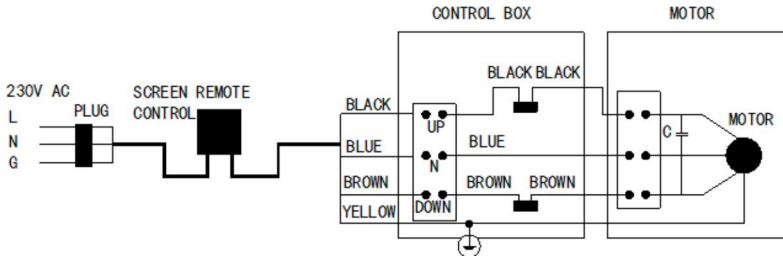


SCHEMI CIRCUITALI

Se lo schermo motorizzato funziona con un interruttore manuale, fare riferimento allo schema seguente per il collegamento elettrico.



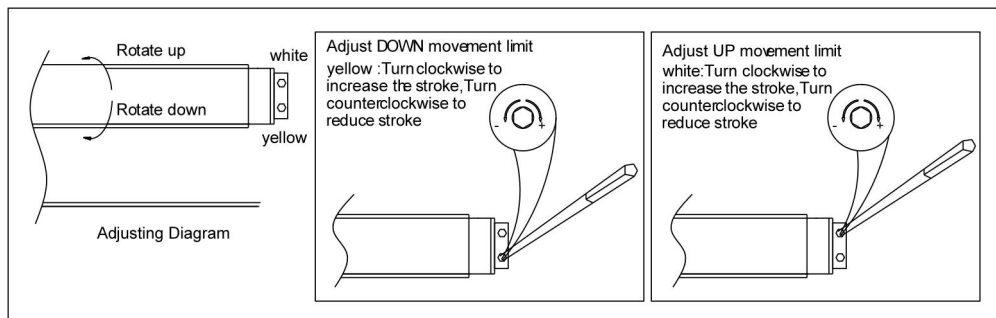
If the motorized screen work with remote control, please refer to the diagram below for electrical connection.



If the remote control does not work well, please check the battery
And replace new one.

REGOLARE L'INTERRUTTORE DI FINECORSA

Regolare la posizione per i due viaggi limite, fare riferimento all'immagine sottostante:



ISTRUZIONI UTILI

1. Lo schermo deve essere commutato su un'alimentazione adatta, può essere 220V/ 50Hz 230V/ 50Hz o 110V/ 60Hz 120V/ 60Hz ma la potenza del motore deve essere uguale alla tensione e alla frequenza locali
2. Lo schermo può essere utilizzato con o senza il telecomando. Il sistema di controllo remoto può essere di tipo radio o a infrarossi. Normalmente, se è necessario un sistema di controllo remoto, viene fornito un telecomando radio, ma è disponibile anche un controller di tipo a infrarossi per esigenze speciali. Queste due diverse funzioni di controllo non possono essere combinate in un unico sistema di controllo.
3. Normalmente all'interno dell'alloggiamento è installato un motore sincronizzato, ma per esigenze particolari è disponibile anche un motore tubolare.
4. Se il sistema di controllo remoto non è accompagnato, lo schermo può essere azionato direttamente dalla scatola di controllo. Basta premere il pulsante SU/GIÙ/STOP sulla scatola di controllo per azionare lo schermo. In alternativa, lo schermo può essere azionato dal telecomando

Produttore: Shanghaimuxinmuyeyouxiangongsi

Indirizzo: Shuangchenglu 803nong11hao1602A-1609shi, baoshanqu, shanghai 200000 CN.

Importato in AUS: SIHAO PTY LTD. 1 ROKEVA STREETEASTWOOD NSW 2122 Australia

Importato negli USA: Sanven Technology Ltd. Suite 250, 9166 Anaheim Place, Rancho Cucamonga, CA 91730



E-CrossStu GmbH
Mainzer Landstr.69, 60329 Frankfurt am Main.



YH CONSULTING LIMITED.
C/O YH Consulting Limited Office 147, Centurion House, London Road, Staines-upon-Thames, Surrey, TW18 4AX

VEVOR[®]

TOUGH TOOLS, HALF PRICE

Tecnico Supporto e certificato di garanzia elettronica

www.vevor.com/support