

VEVOR[®]

TOUGH TOOLS, HALF PRICE

Technical Support and E-Warranty Certificate www.vevor.com/support

TOWEL WARMER CABINET

MODEL:RTD-23A

We continue to be committed to provide you tools with competitive price.

"Save Half", "Half Price" or any other similar expressions used by us only represents an estimate of savings you might benefit from buying certain tools with us compared to the major top brands and does not necessarily mean to cover all categories of tools offered by us. You are kindly reminded to verify carefully when you are placing an order with us if you are actually saving half in comparison with the top major brands.

VEVOR®

TOUGH TOOLS, HALF PRICE

TOWEL WARMER CABINET

MODEL:RTD-23A






NEED HELP? CONTACT US!

Have product questions? Need technical support? Please feel free to contact us:

Technical Support and E-Warranty Certificate

www.vevor.com/support

This is the original instruction, please read all manual instructions carefully before operating. VEVOR reserves a clear interpretation of our user manual. The appearance of the product shall be subject to the product you received. Please forgive us that we won't inform you again if there are any technology or software updates on our product.

	<p>Warning-To reduce the risk of injury, user must read instructions manual carefully.</p>
	<p>This device complies with Part 15 of the FCC Rules. Operation is subject to the following two conditions:(1)This device may not cause harmful interference, and (2)this device must accept any interference received, including interference that may cause undesired operation.</p>
	<p>This product is subject to the provision of European Directive 2012/19/EC. The symbol showing a wheeled bin crossed through indicates that the product requires separate refuse collection in the European Union. This applies to the product and all accessories marked with this symbol. Products marked as such may not be discarded with normal domestic waste, but must be taken to a collection point for recycling electrical and electronic devices</p>

SAFETY PRECAUTIONS

Caution and proper procedures must be practiced at all times when using electrical appliances. Basic safety precautions should always be followed, including the following:

- Do not use appliances for other than intended use.
- Do not place poisonous, flammable, explosive and evaporative chemicals into the towel warmer.
- Do not touch hot surfaces. Use handle or knobs.
- To protect against electrical shock, do not immerse cord, plugs or appliance in water or other liquid.
- Unplug from outlet when not in use and before cleaning. Cool the machine before maintenance.
- Do not operate any appliance with a damaged cord or plug or after the

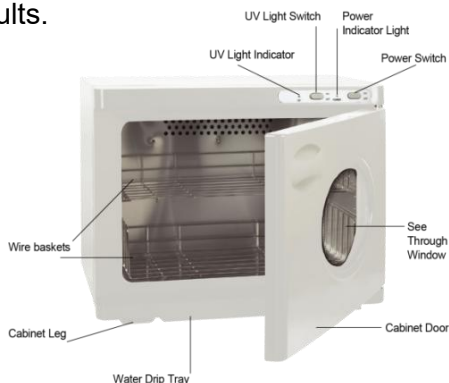
appliance malfunctions or has been damaged in any manner. If the product is defective, stop using it at once and contact supplier for service.

- Do not use outdoors. This appliance is intended for indoor use only.
- Do not let cord hang over edge of table or counter, or touch hot surfaces.
- Close supervision is necessary when any appliance is used by or near children.
- Do not leave the appliance unattended when switched on.
- Extreme caution must be used when moving an appliance containing hot liquids.
- The temperature of accessible surfaces may be high when the appliance is operating.
- If using an extension cord, the marked electrical rating of the extension cord should be at least as great as the electrical rating of the appliance.

Internal surfaces, wire baskets, towels and steam may be hot. Use extreme caution when removing hot towels or baskets. Always use protective heat-resistant gloves or mitts to avoid steam or other burns. Ignoring the warnings may result in harm or serious injury.

INSTRUCTIONS

Thank you very much for choosing this towel warmer cabinet. Please read all of the instructions before using it. The information will help you achieve the best possible results.



PRODUCT PARAMETER

Model	RTD-23A	
District	North America	Europe
Power	AC 110-120V 60Hz	AC220V-230V 50/60Hz
Wattage	200W	
Capacity	23L	
Net Weight	5.10kg	
Product Size	452*285*350mm	

PACKAGE DETAILS

NO.	ACCESSORY NAME	QUANTITY
1	Towel Warmer Cabinet	1
2	Wire Baskets	2
3	Towel Clip	1
4	User Manual	1

BEFORE OPERATION

- Be sure to remove all packing material before use.
- Place the unit on a well-ventilated, flat, sturdy surface away from heat sources. The unit should not be used in the immediate vicinity of water (such as bathtubs, washbowls, etc.) where the likelihood of immersion may occur. Keep at least 30mm away from walls and other objects.
- Plug cord into a power outlet.
- Remove the wire basket and set aside.

OPERATION

1. Please fold or roll up the damp or pre-moistened towels but not soaked ones into the wire basket of hot towel warmer. Try to wring out the water several times to shorten the heating time.
2. The inside wall temperature is 158-176°F. 100% cotton dry towels could be put as well but not any other cloths which couldn't bear this high temperature, and keep it within less than 2 hours heating. Please keep the towel away from the inner wall of warmer.
3. Do not overload the wire basket or directly place towels into the towel warmer.
4. Close the door firmly and press the Power button to turn on. The indicator near the switch will be on to show that the towel cabinet has started heating.
5. In about 1.5-2.5 hours, depending on how many towels you put inside, while keeping the door closed, the temperature inside the cabinet will heat up to approximately 158-176°F and will be kept automatically. Avoid opening cabinet when towels are heated.
6. Turn off the power button whenever you want to add more towels. The heating process will be restarted. The thermostat will automatically stop working when temperature reaches 158-176°F. It's safe to keep it on.
7. If desired, press the UV button to turn on EPA-registered UV sterilization system. The indicator near the switch will be on to show that the UV light is working. Wait 30 minutes for the sterilization process to complete.
8. Whenever you want to open the door, please first turn off the power with the indicator light off. Stay a safe distance from the cabinet door opening to avoid being burned by high-temperature steam from the cabinet. Remove towels with tongs or heat-resistant gloves.
9. Towels may be too hot to apply immediately, and caution should be used before applying to the face or body.

MAINTENANCE

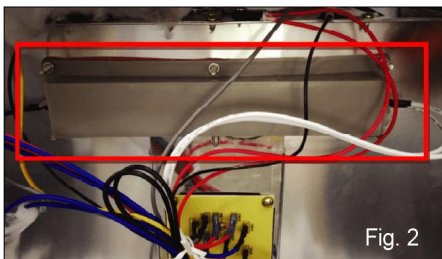
1. Turn OFF the unit.
2. Unplug the cord from the outlet.
3. Wait for contents to cool before handling. Contents may be hot. Remove the wire basket and towels. Set the wire basket aside to dry.
4. With a soft cloth, wipe down the internal surfaces. Do not use harsh chemicals or abrasives. To clean exterior, use a soft cloth and mild soap.
5. Pull the drip tray forward and empty contents. Set the drip tray aside to dry.

REPLACING THE BULB

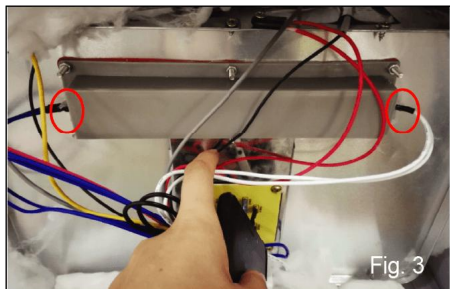
1. Turn OFF the unit.
2. Unplug the cord from the outlet.
3. Remove all the screws on the back panel and open the back panel.
4. You can see the Glass Fibre after opening the back panel. See Fig. 1.



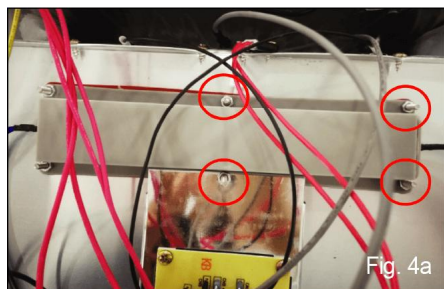
5. Take out the Glass Fibre back, you can see the position of the lamp. See Fig. 2.



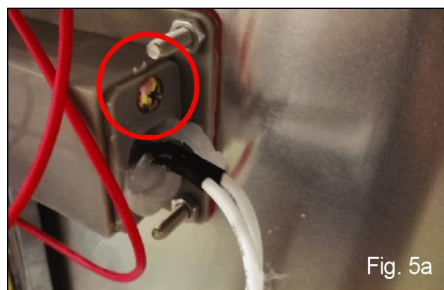
6. Unplug both lines. See Fig. 3.



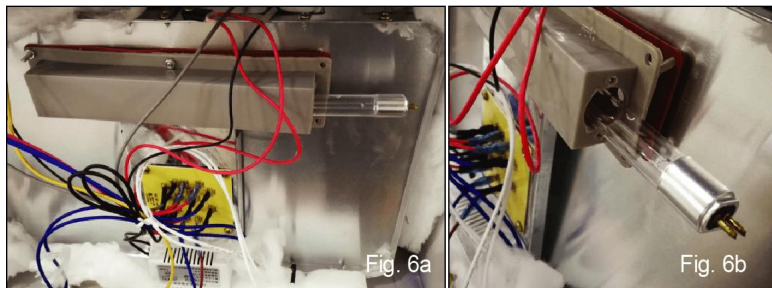
7. Loosen the screws on the small box (the screws are connected to the inside of the liner and can be screwed out from the inside of the liner). See Fig. 4a & 4b.



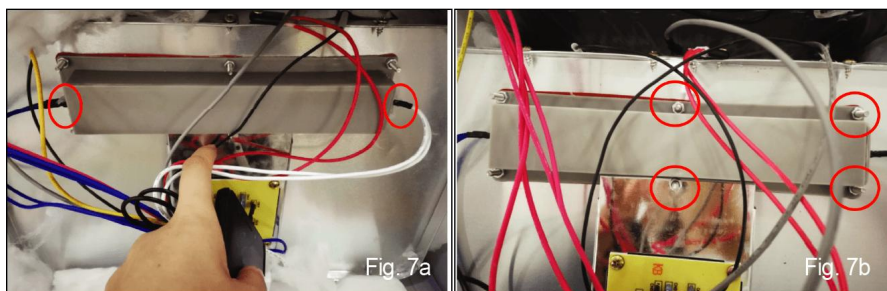
8. On the right side of the box, you can see two screws, screw out the two screws and open the small cover of the box. See Fig. 5a & 5b.



9. Remove the faulty bulb. Insert a new bulb back inside the small box, close the lid, and tighten the two screws on the lid. See Fig. 6a & 6b.



10. Reattach both lines and tighten the screws of the box. See Fig. 7a & 7b.



11. Replace Glass Fibre and reattach back panel.

TROUBLESHOOTING

1. There is excessive moisture when the towel warmer is ON or the towels are heating up very slowly. Check to see that the towels are only slightly damp. Excess moisture and/or slow heating time may be a result of soaked towels.
2. The door is not closing properly and/or steam is escaping. Check that the silicone door seal is in place. Push into door groove to assure proper fit.

CORRECT DISPOSAL



This product is subject to the provision of European Directive 2012/19/EC. The symbol showing a wheeled bin crossed through indicates that the product requires separate refuse collection in the European Union. This applies to the product and all accessories marked with this symbol. Products marked as such may not be discarded with normal domestic waste, but must be taken to a collection point for recycling electrical and electronic devices

VEVOR[®]
TOUGH TOOLS, HALF PRICE

Technical Support and E-Warranty Certificate
www.vevor.com/support