

VEVOR[®]

TOUGH TOOLS, HALF PRICE

Technical Support and E-Warranty Certificate

www.vevor.com/support

STATIC CLIMBING ROPE USER MANUAL

**MODEL NO.: ROPE-S-105-32,
ROPE-S-105-64、 ROPE-S-105-96**

We continue to be committed to provide you tools with competitive price.

"Save Half", "Half Price" or any other similar expressions used by us only represents an estimate of savings you might benefit from buying certain tools with us compared to the major top brands and does not necessarily mean to cover all categories of tools offered by us. You are kindly reminded to verify carefully when you are placing an order with us if you are actually saving half in comparison with the top major brands.

VEVOR®

TOUGH TOOLS, HALF PRICE

Static Climbing Rope

MODEL NO.: ROPE-S-105-32、ROPE-S-105-64、ROPE-S-105-96



NEED HELP? CONTACT US!

Have product questions? Need technical support? Please feel free to contact us:


Technical Support and E-Warranty Certificate
www.vevor.com/support

This is the original instruction, please read all manual instructions carefully before operating. VEVOR reserves a clear interpretation of our user manual. The appearance of the product shall be subject to the product you received. Please forgive us that we won't inform you again if there are any technology or software updates on our product.

 **WARNING:**

Please read this manual carefully before using the product. Failure to do so may result in serious injury. SAVE THIS MANUAL

GENERAL INFORMATION

Static Climbing Rope			
Trademark		Reference standards	ASTM F2116 – 01 (2015) EN 12275:2013

All instructions attached to the device must be read and understood carefully before use. Attention! This sheet contains only the general instructions.

1) TRAINING AND PHYSICAL FITNESS.

The activities related to the use of this device are potentially dangerous and its use is reserved exclusively for competent and trained persons or persons directly supervised by competent and trained persons. Before using the device, it is essential to: have received adequate training and instruction and, where required, specific training for the use of the devices; be familiar with the device; be in perfect psycho-physical shape. Attention! Consumption of alcohol or psychotropics, including medication that may alter perception, balance and concentration, is to be avoided.

2) WARNINGS. Before use: ensure that all equipment is in perfect operating condition, that it is appropriate for the intended use and that all the elements and components are compatible with each other and comply with the rules, regulations and directives currently in place; check that the system is assembled correctly and that the various components work without interfering with one another. Before and during use: check the perfect closure of the lever and the associated locking of any connectors used.

3) Tips for protecting your Ropes

You too can help prolong the lifetime of your products. To succeed in this challenge, several aspects must be taken into account: product usage (intensity, frequency, conditions etc.), and also transport, storage, care and maintenance. Taking care of all of these aspects helps avoid premature wear of the equipment. Here is a summary of precautions recommended by VEVOR for maintaining your equipment.

3.1) Precautions for use

A rope swells with use and can shrink in length by up to 15 %. Regularly check the length of your rope. A wet or icy rope is less abrasion-resistant. It is also harder to control in belay/ rappel devices. Descent a knot at the end of the rope is a necessary precaution in certain situations. Avoid descending too rapidly: there is a risk of burns and accelerated wear of the rope. If a rope is cut into several lengths,

mark the ends with the correct lengths and end markings. Cutting a rope makes you responsible for measuring the new lengths and adding new markings. It is recommended to follow the UIAA protocol for cutting and measuring your rope and to add a margin of 3% to address shrinkage over the life of the rope. The new lengths of the rope must each be furnished with a copy of the Instructions for Use. Tie a figure-eight knot (for example) or use a manufactured termination. Use your ropes at a maximum ambient temperature of 80° C. Avoid any exposure to heat above 80° C, or to flame.

Do not walk on the rope, tie into alternate ends of the rope on each pitch to avoid creating twists. Avoid descending too fast on a rope as this heats the sheath and accelerates wear (rappelling, or lowering a climber on a top rope). During very rapid descents, a rappel device can become hot enough (230 °C) to melt the nylon fibers of the rope. Store your ropes in a proper bag that will protect them from dirt. Store ropes in bags, uncoiled. This avoids creating twists. Keep rope away from contact with sharp objects (ice screws, ice axes, crampons). Keep your ropes clean.

In general, take care of your safety gear. Do not leave it lying about anywhere. Do not throw your gear on the ground. Read the specific recommendations for each product in the Instructions.

3.2) Lifetime

Warning: An unusual event may require you to retire a product after only one use. This may involve the type and intensity of use, or the environment in which it is used: aggressive environments, sharp edges, extreme temperatures, chemicals...

3.3) Storage

Store your equipment in a well-ventilated area out of direct sunlight (UV). Reserve a specific place for your equipment. Warning: any contact with harsh or corrosive substances (e.g. acids) is prohibited. If you have a doubt, retire your equipment. Never store your gear in a damp place where mold can develop (damp closets, bags and waterproof containers with moisture inside). For long-distance travel, beware of moisture in containers during transit, in ports or airports, especially in salty environments.

3.4) Transport

It is preferable to store your equipment in a pack to protect it. With a backpack, take care that crampon points or sharp objects don't damage your helmet, ropes, or slings. When traveling by truck, train, plane, or boat, the temperatures can be extreme and can degrade the products. For example, never leave your textile equipment or helmets under a window or in the trunk of a car that is exposed to direct sunlight. The temperature can be higher than 80 °C. In the trunk of a car, for example, pay attention to your equipment's possible proximity to gas cans, car batteries, or cleaners (risk of leaking). Warning: any contact with chemical products, harsh or corrosive substances (e.g. acids) is prohibited. If you have a doubt, retire your equipment.

3.5) Maintenance

After use in a salty environment (seaside), rinse with fresh water. Wash ropes in

lukewarm soapy water (ph neutral, 30 °C maximum), then rinse thoroughly with fresh tap water. You can wash your rope in a washing machine. Choose the 30 °C delicate synthetic setting, without spin cycle. Use only household face and body soap. All other cleaning products, for example solvents, stain removers, degreasers, etc. are too strong and are incompatible with nylon. Do not use a high pressure water sprayer.

Remove your gear from packs after each activity, even if cleaning isn't necessary. Let all your gear air-dry away from UV sources (ultraviolet rays). Avoid proximity to heat sources such as direct sunlight, wood fires, or a radiator.

4) Additional Information

You must have a rescue plan and the means to rapidly implement it in case of difficulties encountered while using this equipment.

- The anchor point for the system should preferably be located above the user's position and should meet the requirements of the EN 795 standard (12 kN minimum strength).
- In a fall-arrest system, it is essential to check the required clearance below the user before each use, in order to avoid hitting the ground or an obstacle in case of a fall. Avoid slack in the rope between the user and the anchor point.
- Make sure that the anchor point is correctly positioned, in order to limit the risk and the length of a fall.
- A fall-arrest harness is the only device allowable for supporting the body in a fall-arrest system.
- When using multiple items of equipment, a dangerous situation can arise in which the safety function of an item of equipment can be affected by the safety function of another item of equipment. **WARNING:** ensure that your products do not rub against abrasive or sharp surfaces.
- Users must be medically fit for activities at height. **WARNING:** inert suspension in a harness can result in serious injury or death.
- The Instructions for Use for each item of equipment used in conjunction with this product must be followed.
- The Instructions for Use must be provided to the user of this equipment, in the language of the country where the equipment is used.
- Make sure the markings on the product are legible.

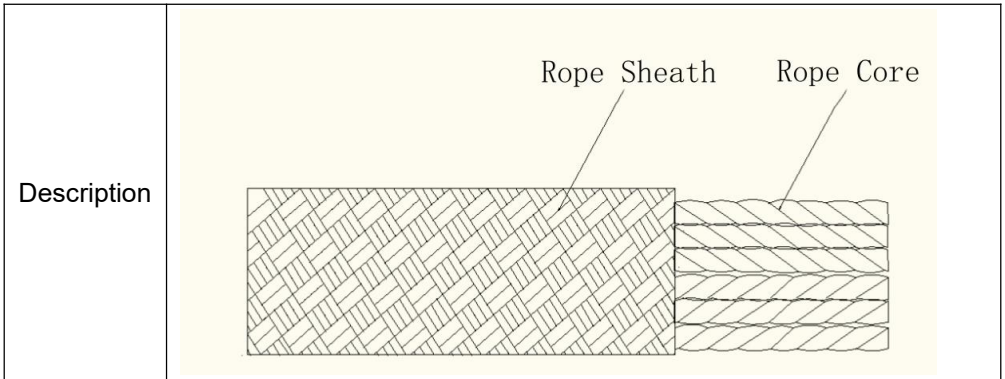
TECHNICAL SPECIFICATIONS

Model	ROPE-S-105-32	ROPE-S-105-64	ROPE-S-105-96
Main Material	Dacron	Dacron	Dacron
Color	Blue	Blue	Blue
Net Weight (kg)	1.16	1.97	2.83
line supervisor(ft)	32	64	96

PACKAGE CONTENTS



PERIODIC CHECKING OF PERSONAL PROTECTIVE EQUIPMENT







PERIODIC CHECKING OF PERSONAL PROTECTIVE EQUIPMENT GENERAL REMARKS

Carrying out regular periodic checks (at intervals predetermined by the manufacturer) is vital for ensuring the equipment's efficiency and durability and the user's safety. The performance of regular periodic inspections is required by the ASTM F2116 – 01 (2015) standard and it is therefore mandatory only for some device categories, whose instructions for use will expressly indicate such obligation. Carrying out periodical controls doesn't relieve the user from the obligation to perform the controls before and after each use, nor to require an extraordinary periodic check, in case an outstanding event occurs (ex, a fall, even from a low height, a change of user etc.), or in case of doubts about the correct functioning of the device. Attention! Before first use, the owner/user of PPE must fill in the "device identification sheet" when present in the user's instructions of the same, Attention! The Inspector, after having carried out the periodic inspection, is responsible for the proper functioning of a PPE. The check must be performed with the highest accuracy, without haste and after completing all the necessary steps.

Regular periodic checks must be carried out: if the previous use of the device is unknown; at least every 12 months, with normal/standard use; in the presence of anomalies found during the inspections before and after each use; except for exceptions, whenever there is a change of user; filling the periodic inspection sheet in; Attention! The periodic inspection sheet also exists in the optimized version for kits or systems of PPE. Attention! Provided that the minimum mandatory frequency for the periodic inspection is 12 months, it can be increased (i.e. 3 months, 6 months etc.) according to the national regulations in force or the frequency, intensity and method of use (i.e. heavy use, use in a marine environment, corrosive atmospheres etc.).

The periodic inspection sheet must be filled out: following the specific procedure for each type of device (climbing technology.com); consulting the photographic material available, where present; consulting the instructions for use of the device; examining the device in a suitable, tidy and well-lit environment. The photographic material at the end of the procedures is accompanied by an explicative caption and by the following symbols:

	The device is in good condition or has only minor damages: it is therefore suitable for use.
	The device has medium/major damages that affect its primary functions and, as a consequence, must be discarded.
	The device has defects that can be solved through lubrication or cleaning. If such defects are not solved, the device must be discarded.
	The device has defects.

DEVICE PERIODIC CHECK SHEET

1) Known product history

1.1	Check the existence and the readability of the marking details.
1.2	Check that device has not exceeded the storage and/or in-use lifetime, as stated in the specific instructions for use.
1.3	Check that the device is intact and no parts are missing (check against a new product).
1.4	Check that the device has not been modified outside the factory or serviced in a non-approved centre (check against a new product).
1.5	Any PPE showing unexpected degradation should be quarantined, pending a detailed inspection. The user should: <ul style="list-style-type: none"> - Provide precise information on the usage conditions. - Report any exceptional event regarding his PPE. (Examples: fall or fall arrest, use or storage at extreme temperatures, modification outside manufacturer's facilities...).

2) Checking the condition of the sheath

2.1	Check the condition of the sheath over the full length of the rope. Make sure there are no cuts, burns, frayed strands, fuzzy areas, or signs of chemicals...
-----	---

3) Checking the condition of the core

3.1	Do a tactile inspection of the core over the full length of the rope, as indicated in the drawing. This allows you to detect areas where the core is damaged (hard spots, swelling, soft or crushed areas...).
-----	--

4) Checking the condition of the core

4.1	To check the length of your rope, follow the steps below:1. Completely uncoil the rope.2. Check the middle mark of the rope. There is a simple way to find the middle of the rope: hold the two rope ends together, then slide the two strands simultaneously through your hands until the middle of the rope is reached. If your rope has a middle mark, check it for accuracy. If the mark is OK, go to the next step. If the mark is not in the right place or if there is no middle mark, place a piece of adhesive tape at the rope's midpoint to help measure its length.
-----	---

DEVICE PERIODIC CHECK SHEET						
No.	Date	Reason for check	Name and signature of the person responsible for checking.	Notes (defects found, repairs performed or other relevant information)	Check results	Date of next check
1		<input type="checkbox"/> Periodic <input type="checkbox"/> Additional			<input type="checkbox"/> Device fit for use. <input type="checkbox"/> Device unfit for use	
2		<input type="checkbox"/> Periodic <input type="checkbox"/> Additional			<input type="checkbox"/> Device fit for use. <input type="checkbox"/> Device unfit for use	
3		<input type="checkbox"/> Periodic <input type="checkbox"/> Additional			<input type="checkbox"/> Device fit for use. <input type="checkbox"/> Device unfit for use	
4		<input type="checkbox"/> Periodic <input type="checkbox"/> Additional			<input type="checkbox"/> Device fit for use. <input type="checkbox"/> Device unfit for use	
5		<input type="checkbox"/> Periodic <input type="checkbox"/> Additional			<input type="checkbox"/> Device fit for use. <input type="checkbox"/> Device unfit for use	
6		<input type="checkbox"/> Periodic <input type="checkbox"/> Additional			<input type="checkbox"/> Device fit for use. <input type="checkbox"/> Device unfit for use	

WARNINGS

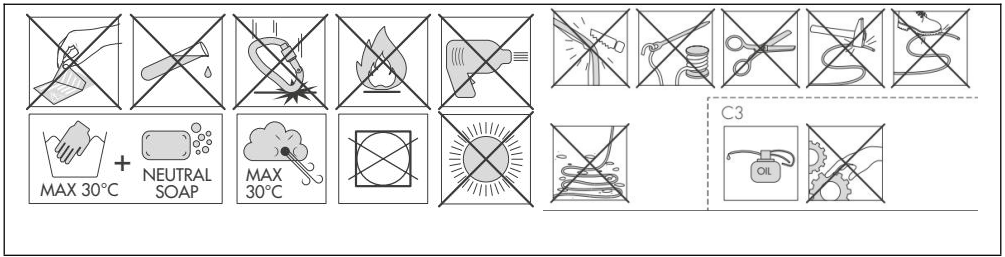
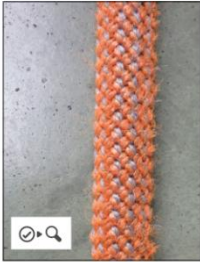
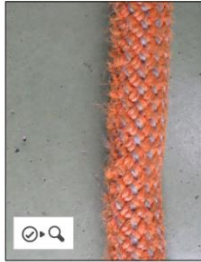


PHOTO APPENDIX

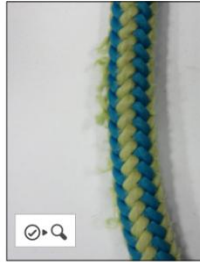
• Fuzzy rope



• Fuzzy rope



• Fuzzy area



• Damaged rope end



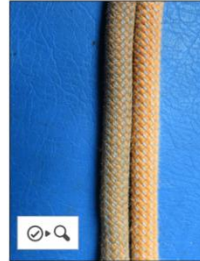
• Cut



• Cut



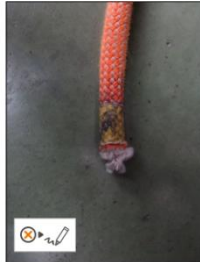
• Discoloration



• Trace of paint



• Illegible marking



• Illegible marking



• Trace of chemicals



• Trace of chemicals



COMPLETION



Address: Shuangchenglu 803nong11hao1602A-1609shi, baoshanqu, shanghai 200000 CN.

Imported to AUS: SIHAO PTY LTD, 1 ROKEVA STREETEASTWOOD NSW 2122 Australia

Imported to USA: Sanven Technology Ltd., Suite 250, 9166 Anaheim Place, Rancho Cucamonga, CA 91730

EC	REP
-----------	------------

E-CrossStu GmbH
Mainzer Landstr.69, 60329 Frankfurt am Main.

UK	REP
-----------	------------

YH CONSULTING LIMITED.
C/O YH Consulting Limited Office 147, Centurion House,
London Road. Staines-upon-Thames. Surrev. TW18 4AX

VEVOR[®]

TOUGH TOOLS, HALF PRICE

Technical Support and E-Warranty Certificate

www.vevor.com/support