

VEVOR[®]

TOUGH TOOLS, HALF PRICE

Technical Support and E-Warranty Certificate www.vevor.com/support

WOOD-BURNING FIRE PIT

MODEL: 6834-38/6834-49/6834-71

We continue to be committed to provide you tools with competitive price.

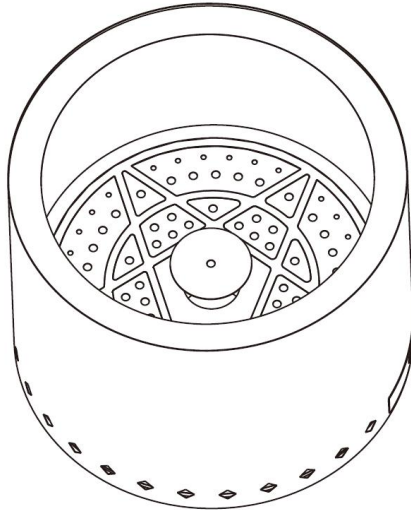
"Save Half", "Half Price" or any other similar expressions used by us only represents an estimate of savings you might benefit from buying certain tools with us compared to the major top brands and does not necessarily mean to cover all categories of tools offered by us. You are kindly reminded to verify carefully when you are placing an order with us if you are actually saving half in comparison with the top major brands.

VEVOR®

TOUGH TOOLS, HALF PRICE

WOOD-BURNING FIRE PIT

MODEL:6834-38/6834-49/6834-71



<Picture Only For Reference >

NEED HELP? CONTACT US!

Have product questions? Need technical support? Please feel free to contact us:

Technical Support and E-Warranty Certificate
www.vevor.com/support

This is the original instruction, please read all manual instructions carefully before operating. VEVOR reserves a clear interpretation of our user manual. The appearance of the product shall be subject to the product you received. Please forgive us that we won't inform you again if there are any technology or software updates on our product.

IMPORTANT SAFEGUARDS



WARNING: Read and understand this entire manual before operating or servicing this product. Failure to follow these warnings and instructions can cause personal injury or damage to valuable property.



WARNING

1. The fire pit is for outdoor use only and should not be used in a building, a garage, or any other enclosed area.
2. Do not use the fire pit for indoor heating. Toxic carbon monoxide can accumulate and cause asphyxiation and possibly death.
3. Do not use if you suffer from heart and lung conditions because smoke inhalation may exacerbate existing conditions.
4. Fire pit will be extremely hot when in use. Never attempt to touch or move your the fire pit until all fire, coals, and ashes are completely extinguished.
5. Do not sit too close to the burning product. Keep a considerable distance away from the product. Keep kids and pets away from the product.
6. Do not overfill the fire pit during use.
7. Do not use accelerate to light the fire. Do not use gasoline, kerosene, diesel fuel, lighter fluid alcohol or any other flammable liquid to light or relight the fire pit.
8. Do not use in inclement weather, such as windy, rainy, snowy weather.
9. Keep flammable liquid well away from the product as some flammable liquids can catch fire from the emitting heat.
10. Keep the set-up area clear from any combustible materials. Dry leaves, paper, dry grass or pine needles can catch fire easily from the embers that come out of the product.
11. Do not use the fire pit in any explosive environment Keep the area around the the fire pit clear and free of any combustible materials, gasoline, or any other flammable liquids.
12. Only handle the product with the poker if you had to.
13. Only adults can set up and maintain products.

14. Never leave the fire pit unattended, especially when children and pets are nearby.
15. the fire pit is not to be used in a boat or recreational vehicle.
16. Always use the fire pit in accordance with all applicable local, state, and national codes. Contact your local fire department for details.
17. When using the fire pit, exercise the same precautions you would with any open fire.
18. The use of alcohol, prescription or non-prescription drugs may impair the consumers ability to operate the fire pit safely
19. Do not use the fire pit until you have read the operating instructions and user warnings.
20. Do not alter or modify the fire pit in any manner.
21. Do not store or use LP gas cylinders within 30 feet of the Fire Pit while it is in operation.
22. Do not use the fire pit under any overhead or near any unprotected combustible constructions. Avoid using under or near any overhanging trees or shrubs.
23. Always use the fire pit on a level and stable surface. Use on wood or composite decks at your own risk.
24. Do not wear flammable or loose clothing when operating the fire pit.
25. Keep all electrical cords away from the fire pit.
26. ALL surfaces of the fire pit are extremely hot when in operation. To avoid burns and serious injury, do not touch the fire pit until the fire is completely out and it has completely cooled. Never touch the coals or ash to see if they're still warm.
27. Avoid breathing smoke from the fire and avoid getting smoke in your eyes.
- 28 After a period of non-use, check the fire pit for signs of damage and creosote buildup. Do not operate until necessary repairs and/or cleanup is done.
29. Do not use water to extinguish the fire as this could cause damage to the fire pit as well as injury to the user.
30. Serious injury, death, and/or property damage may occur if the above

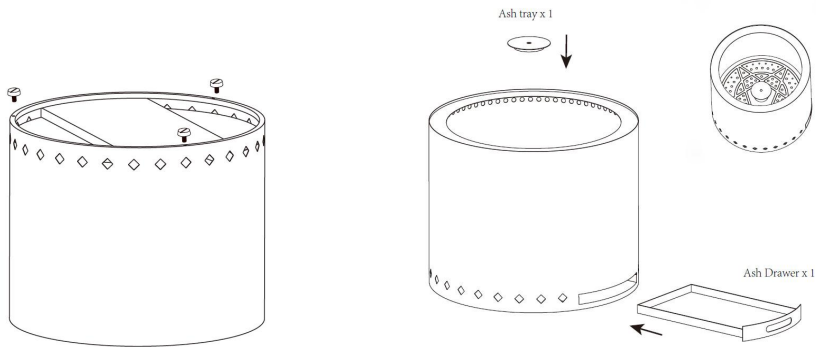
instructions are not followed exactly.

SAVE THESE INSTRUCTIONS

Assembly instructions:

1. Fix the 3 pcs foot pad screws to the bottom of the fire pit, to keep the ground at a lower temperature.

Cautions: If use it on the wooden floor, please use a Fireproof mat.



2. Put the ash tray on the bottom of the fire pit.

Cautions: When the fire going, **DO NOT** open the ash drawer.

3. Set up on a flat surface, away from anything that could pose a fire threat. As this item is low to the ground, always keep an eye on the fire.

Fire pit user guide:

Please be careful and cautious when using this product.

This product is for outdoor use only and will become very hot during burning.

Maintenance

After each use, please clean and dry it to avoid iron oxidation and rust. If the high-temperature paint on the surface falls off after repeated use, please brush it. Warm tips: if there is slight corrosion, it will not affect the use.

Smokeless experience

Enjoy your fire without the nuisance smoke. Our smokeless fire pit features a double-walled construction that efficiently circulates the air and allowing the wood to burn without too much smoke.

Secondary combustion

The camping stove has a double wall design that maximizes airflow and the burning process. Bottom vent holes allow oxygen to feed the fire from below while simultaneously channelling warm oxygen up between the walls of the stove and back into the fire. Approximately 12 minutes after the ignition started, the temperature in the furnace increased, and the secondary combustion started working.

A more efficient burn

A more complete burn means the little particles that would have been smoke are burned up by the top vents. It also means no more half burned logs to deal with.

Eco-friendly & wood burning

We recommend using dry skin-peeled wood logs or wood pellets for the best bonfire experience

The fire pit should be completely cleaned and dried after use.

Make sure to cover the fire pit to prevent rust.

We can't be held liable for rust due to weather conditions.

Considerations before use

Check with your fire department for information on burning bans and fire pit regulations in your area. Fire pits can remain hot and smoulder for few hours after the visible fire has been extinguished. Smouldering fire pits are a common cause of injuries and burns, especially for children.

The surface of this product will discolour when placed outdoors and from first use, due to the nature of the product and the heat/naked flames.

CHOOSING A LOCATION FOR SETUP

Fire pits need to be placed in a safe location. Do not place them near buildings, walls, outdoor furniture, inflatable pools or other flammable items. Or nearby items could catch fire from heat or flames. Position on a non flammable surface, clear of overhanging objects.

Using The Fire Pits

The product is for outdoor use only, and will become very hot during use. To maintain the coating color, cover the bottom of the fire bowl with small stones or sand stones before each use.

Using the wrong materials inside a fire pit can be dangerous. Make sure to use only coal or wood.

Do not use highly flammable items such as clothing, rags, paper towels, tissues or other items that could burn uncontrollably.

Do not use petrol, lighter fuel, alcohol or similar substances to light a fire. Never leave the product unattended.

Wind

The Fire pits should be protected from wind and not used when winds are high or gusty. Wind causes the smoke and fire to blow around, which could spread burning embers. When using Fire pits during light breezes, keep an eye on it to ensure no small embers escape.

Do not place Fire pits near anything that could catch fire.

People & Pets

Supervised Children and Pets when the fire pit is in use.

Ensure that everyone near the Fire pits understands it is an active fire and can produce smoke and embers. Do not allow children or animals to get close to Fire pits to avoid smoke inhalation and burns.

The Fire pits will get very hot and could burn someone if they get too close.

Extinguishing The Fire Properly

Fire pits are dangerous if the fire is not extinguished properly. Do not extinguish the fire by pouring water into a hot fire bowl because this may

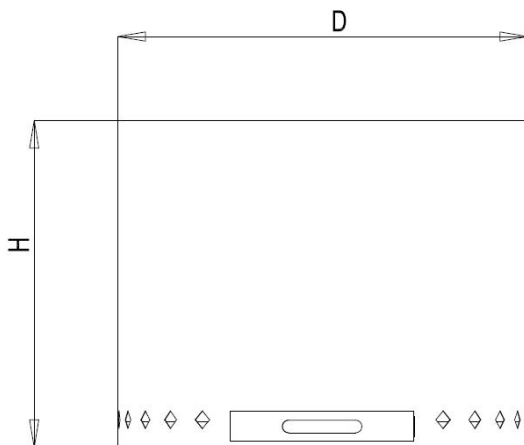
cause distortion, rust or flaking paint. Fire should be allowed to die out on its own, or extinguished with a fire extinguisher. Its important to note that fire can continue to smoulder and embers remain hot even if there is no visible flame. Make sure to stay near the fire pit after the flame is out to check for burning embers or smoke, which could indicate that a live fire still exists. When in doubt, after the bowl has been allowed plenty of time to cool down, fill the inside of the fire pit with water to make sure all the fire is out. The fire pit could still be hot for hours after use.

DO NOT USE A CHEMICAL BASED CLEANER as this may ignite a flame on next use.

Storage

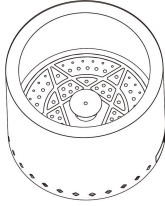



It is best to keep the Fire pits out of the rain. After you are sure the fire is completely extinguished, clean it out and store it away so it does not get wet from outdoor conditions.

PRODUCT SPECIFICATIONS:



Model	D (mm)	H(mm)
6834-38	∅ 380	320
6834-49	∅ 490	390
6834-71	∅ 710	430

PACKAGE INCLUDE

No	Components	Picture	QTY
1	Fire Pit		1
2	Ash tray		1
3	Poker		1
4	Foot pad		3
5	Manual		1

Manufacturer: Shanghaimuxinmuyeyouxiangongsi

Address: Shuangchenglu 803nong11hao1602A-1609shi, baoshanqu, shanghai 200000 CN.

Imported to AUS: SIHAO PTY LTD. 1 ROKEVA STREETEASTWOOD NSW 2122 Australia

Imported to USA: Sanven Technology Ltd. Suite 250, 9166 Anaheim Place, Rancho Cucamonga, CA 91730

UK	REP
-----------	------------

YH CONSULTING LIMITED.

C/O YH Consulting Limited Office 147, Centurion House, London Road, Staines-upon-Thames, Surrey, TW18 4AX

EC	REP
-----------	------------

E-CrossStu GmbH
Mainzer Landstr.69,
60329 Frankfurt am Main.

VEVOR[®]

TOUGH TOOLS, HALF PRICE

Technical Support and E-Warranty Certificate

www.vevor.com/support