

VEVOR[®]

TOUGH TOOLS, HALF PRICE

Technical Support and E-Warranty Certificate

www.vevor.com/support

PASTE LIQUID FILLING MACHINE

USER MANUAL

We continue to be committed to provide you tools with competitive price.

"Save Half", "Half Price" or any other similar expressions used by us only represents an estimate of savings you might benefit from buying certain tools with us compared to the major top brands and does not necessarily mean to cover all categories of tools offered by us. You are kindly reminded to verify carefully when you are placing an order with us if you are actually saving half in comparison with the top major brands.

VEVOR[®]

TOUGH TOOLS, HALF PRICE

Paste Liquid Filling
Machine

MODEL:SYC-5-X-V1,SYC-5-X-V2,SYC-5-X-V3



NEED HELP? CONTACT US!

Have product questions? Need technical support? Please feel free to contact us:

Technical Support and E-Warranty Certificate
www.vevor.com/support

This is the original instruction, please read all manual instructions carefully before operating. VEVOR reserves a clear interpretation of our user manual. The appearance of the product shall be subject to the product you received. Please forgive us that we won't inform you again if there are any technology or software updates on our product.

⚠️ WARNING

1. Read carefully and understand all **ASSEMBLY AND OPERATION INSTRUCTIONS** before operating.
2. Failure to follow the safety rules and other basic safety precautions may result in serious personal injury.

GENERAL SAFETY RULES

Important reminder

1. Before use, please carefully read the product manual and ensure that you understand and comply with all safety warnings and usage precautions.
2. Do not use this product for other non-designated purposes to avoid unexpected risks.
3. This product is only applicable to users within the specified age group and scope of application. Please strictly comply with relevant age restrictions and warnings.
4. If there are any abnormalities in the product, please stop using it immediately and contact the after-sales service center for consultation or to arrange for repair.

Environmental requirements for use

1. Please use in a dry and well-ventilated environment to avoid extreme environmental conditions such as water activation, high temperature, high humidity, and extremely low temperature.
2. Avoid direct sunlight or contact with fire sources to prevent product damage or fire.
3. Please ensure a stable usage environment and avoid the product from being hit or dropped to avoid damage.

Safety Operation Guidelines

1. Please use a suitable power supply and voltage, and do not use damaged power cords or plugs.
2. When using this product, do not short-circuit circuits or connect mismatched devices to avoid risks such as electric shock and fire.

3. When foreign objects are found on the surface of the product, please immediately stop using and remove the foreign objects before continuing to use.
4. When using this product continuously for a long time, please rest in good time to avoid excessive fatigue.
5. Do not apply external force to the battery to avoid safety hazards such as battery rupture and leakage.

Maintenance and upkeep

1. Regularly maintain and clean the product. Before cleaning, please disconnect the power supply and wipe it with a dry cloth. Be careful not to use alcohol, acid or alkali solutions, Corrosive substances, etc.
2. When the product is not in use for a long time, please disconnect the power supply promptly to save energy and extend the product's lifespan.
3. Do not disassemble the product or replace components on your own. If you encounter any malfunctions, please contact the after-sales service center.

Emergency handling measures

1. When there are abnormal situations or accidents with the product, please stop using it as soon as possible. If overheating, smoking, or abnormal sound are found, please immediately cut off the power supply and contact the after-sales service center.
2. If the product involves an emergency situation that may harm personal safety, please call the emergency rescue number in a timely manner.

Disclaimers

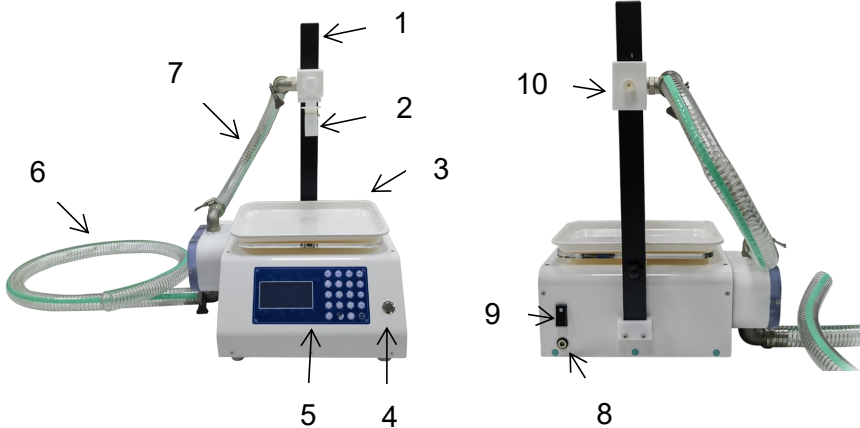
We attach great importance to the safety and quality of our products, but cannot assume responsibility for safety accidents caused by improper use or operation.

SAVE THESE INSTRUCTIONS

MODEL AND PARAMETERS

| Model | SYC-5-X-V1 | SYC-5-X-V2 | SYC-5-X-V3 |
|-----------------|---|-------------|-------------|
| Suitable liquid | A liquid of high viscosity (no particles) such as honey, autumn pear paste, tahini, etc | | |
| Filling Range | 50~5000g | 50~5000g | 50~5000g |
| Max Flow Rate | 2L/min | | |
| Control Mode | Automatic | | |
| Rating(s) | AC120V 60Hz | AC230V 50Hz | AC230V 50Hz |
| Power(Max.) | 120W | 120W | 120W |

STRUCTURE DIAGRAM



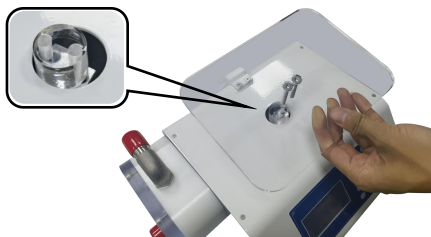
- 1.Bracket 2. Filling Nozzle 3. Tray 4. Start /Stop Button
 5.Control Panel 6. Inlet Pipe 7.Outlet Pipe 8.Power interface
 9. Power Switch 10. Adjustment Block

COMPONENTS

| Model Parts | SYC-5-X-V1 | SYC-5-X-V2 | SYC-5-X-V3 |
|----------------------------------|------------|------------|------------|
| Power Cord (Adapter included) | ×1 | ×1 | ×1 |
| Inlet Pipe | ×1 | ×1 | ×1 |
| Outlet Pipe | ×1 | ×1 | ×1 |
| Pipe Clip | ×3 | ×3 | ×3 |
| Syringe (60ml) | ×1 | ×1 | ×1 |
| Bracket | ×1 | ×1 | ×1 |
| Filling Nozzle | ×2 | ×2 | ×2 |
| Tray | ×1 | ×1 | ×1 |
| Sub-plate | ×1 | ×1 | ×1 |
| Adjustment Block | ×1 | ×1 | ×1 |
| Rubber Head Screw | ×1 | ×1 | ×1 |
| Hex Wrench | ×1 | ×1 | ×1 |
| Countersunk Screw | ×2 | ×2 | ×2 |
| User Manual | ×1 | ×1 | ×1 |
| Plate Column | ×1 | ×1 | ×1 |

OPERATING INSTRUCTIONS

1. Put on the plate column. Install the sub-plate of the tray and secure it with countersunk screws.



2. Put on the tray.



3. Insert the bracket into the rear slot and fasten it with rubber head screws.



4. Insert the adjusting block into the bracket and fasten it with rubber head screws.



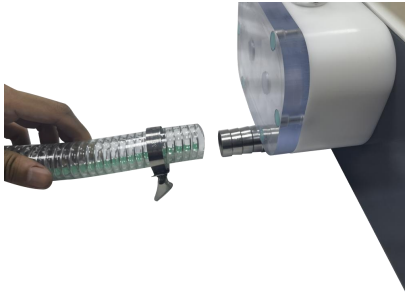
5. Connect the outlet pipe and lock it with pipe clip as shown.



6. Connect the pump outlet to the outlet pipe and lock the pipe clip as shown.



7. Connect the pump inlet to the inlet pipe and lock the pipe clip as shown.



8. Insert the power cord.



9. Product assembly completed.

Note: The adjusting block and the filling nozzles can be adjusted as needed.



10. Clean:

After use, as needed it can be cleaned by repeated suction with a mild cleaning solution. Then it can be cleaned by repeatedly pumping water.

The operating instructions



1.Weight shortcut keys:M1 (500g)M2(1000g)M3(2500g)M4(5000g)。

2.Tare: Press "Tare" and the "real-time" weight reading of the filling machine will be zero.

3.Setting: After pressing the "setting" key, the number in the "filling" column of the display screen flashes.After inputting the number to be set, the cursor stops flashing, after pressing the "setting key" , then the filling weight is set . The number on the filling bar is displayed as the set weight.

★Note: Due to the different viscosity of honey, the system will not be able to accurately fill the set weight . It is recommended to do the "calibration" after filling several bottles. Firstly setting the weight to less than the filling weight you require. For example:if you require to fill1000 grams,you can set 950 grams first start filling.After the filling is completed, get another electronic scale to weigh the error, and then press the "set" "Button to compensate for error value,which will make the weight of each next bottle more accurate."Manual mode" and "Automatic mode" are the same as above! (See the video tutorial on page 7 for details)

4.Trigger: After pressing the "trigger" key, the number in the "trigger" column of the display screen will flash, enter the number 5~15 grams less than the empty bottle weight into the flashing cursor column, and the cursor

will stop flashing when you press "trigger" At this time, the trigger value setting is completed.

Note: Due to the different sizes of honey bottles, if the trigger value is not set properly, the device will not start working! Setting range: for example: The empty bottle weight is 20grams, the trigger value is set to 15 grams; the empty bottle weight is 50 grams, the trigger value is set to 40 grams; and the empty bottle weight is 240 grams. The trigger value is set to 225 grams. Do not set the trigger value to be too small or too large for the bottle weight, and the trigger value cannot be larger than the weight of the filled liquid. (See the video tutorial on page 7 for details)

5. Cleaning: Press the "Cleaning" button, the direction is reversed and the honey in the pipeline is pumped back into the honey barrier.

Note: After the anti-pumping of the honey is finished, please let the remaining honey in the tube flow clean in order to avoid waste. Then add a certain amount of clean water to the container (barrier, basin), put the liquid inlet into the container, and put the inlet into the container after it is removed from pump. After switching the "manual mode", press the start button to clean. (See the video tutorial on page 7 for details)

6. Automatic mode: Press the Tai Chi pattern to switch to "automatic mode".

★Steps: After the machine has set the filling weight, just put the bottle on the tray, and the machine will sound a "drop" alarm. The system will tare the bottle automatically, the display will reset the weight at the same time. The machine will automatically start filling to the set weight value after "drip" alarm. The "real-time" weight is the net weight after filling is completed. After the bottle is taken from the tray, the machine will sound a "drop" alarm, and the real-time "weight" of the display will be cleared. Then put it in the next empty bottle. Repeat the above operation.

★Note: After taking down the filled bottle, the machine will sound a "drop" alarm and then put on an empty bottle, otherwise the machine will not start.

7. Manual mode: Press the Tai Chi pattern to switch to "manual mode".

★Note: "Manual mode" is mainly used when there is a certain amount of honey left in the bottle with unknown weight. For example: a bottle with 1000grams volume and bottle weight 26 grams. There is half a bottle of honey with unknown weight . At this time, click the "Set" button to set the weight to 1026 grams. Put this bottle on the tray and press start , then the machine will fill the bottle to 1000 grams of honey

8. Stainless steel key: both "start " and "emergency stop"



★Note: In "manual mode" , it is the start key. When the machine is abnormal, it can be the emergency stop key.

MAINTENANCE

- 1.The user shall select a quantitative filling machine of a suitable range according to the said products.
- 2.The machine contains a precision electronic scale, it is forbidden to be overweight.
- 3.The Height of filling head can be adjusted to about 10 mm from the bottle mouth.
- 4.When in use, please keep the machine level and stable to avoid big vibrations or impact, otherwise it may cause damage.
- 5.Machine first use or long time no use, very few will not absorb water, because the pump is internally dry result. You need to add some water from the intake pipe to the pump and then start the machine.
- 6.It is better to clean the machine with clean water after every use, which can prolong the service life of the pump. .
- 7.When the machine is not in use, please empty the liquid and store it in a ventilated and dry place.
- 8.Please clean the product and the filter in time after each use.

9. Always keep the product outside clean.


10. Please store the product in a dry and ventilated place.

11. If not used for a long time, please clean and empty the liquid in the product.

12. Please replace the following consumable parts regularly:

Pipe, Filling Nozzle

TROUBLESHOOTING

| Problem | Possible Cause | Possible Solution |
|---|--|---|
| Not absorbing water | Machine first use or long time no use, very few will not absorb water, because the pump internal dry result. | You need to add some water from the intake pipe to the pump and then start the machine. |
| The pump can't get the liquid out | Weighing sensor failure | Replace weighing sensor |
| | The power cord is not plugged in | Reconnect the power cord |
| | The pipe inlet is blocked by the bottom of the barrel | Change the pipe inlet position |
| The control panel light is not on | The power cord is not plugged in | Reconnect the power cord |
|  | This product is subject to the provision of European Directive 2012/19/EC. The symbol showing a wheeled bin crossed through indicates that the product requires separate refuse collection in the European Union. This applies to the product and all accessories marked with this symbol. Products marked as such may not be discarded with normal domestic waste, but must be taken to a collection point for recycling electrical and electronic devices. | |

Manufacturer: Shanghaimuxinmuyeyouxiangongsi

Address: Shuangchenglu 803nong11hao1602A-1609shi, baoshanqu, shanghai 200000 CN.

Imported to AUS: SIHAO PTY LTD. 1 ROKEVA STREET EASTWOOD NSW 2122 Australia

Imported to USA: Sanven Technology Ltd. Suite 250, 9166 Anaheim Place, Rancho Cucamonga, CA 91730



E-CrossStu GmbH
Mainzer Landstr.69, 60329 Frankfurt am Main.



YH CONSULTING LIMITED.
C/O YH Consulting Limited Office 147, Centurion House,
London Road, Staines-upon-Thames, Surrey, TW18 4AX

VEVOR[®]

TOUGH TOOLS, HALF PRICE

Technical Support and E-Warranty Certificate

www.vevor.com/support