

VEVOR[®]

TOUGH TOOLS, HALF PRICE

Technical Support and E-Warranty Certificate

www.vevor.com/support

LABELING MACHINE

USER MANUAL

We continue to be committed to provide you tools with competitive price.

"Save Half", "Half Price" or any other similar expressions used by us only represents an estimate of savings you might benefit from buying certain tools with us compared to the major top brands and does not necessarily mean to cover all categories of tools offered by us. You are kindly reminded to verify carefully when you are placing an order with us if you are actually saving half in comparison with the top major brands.

VEVOR®

TOUGH TOOLS, HALF PRICE

LABELING MACHINE

MODEL:LD-10



NEED HELP? CONTACT US!

Have product questions? Need technical support? Please feel free to contact us:

Technical Support and E-Warranty Certificate
www.vevor.com/support

This is the original instruction, please read all manual instructions carefully before operating. VEVOR reserves a clear interpretation of our user manual. The appearance of the product shall be subject to the product you received. Please forgive us that we won't inform you again if there are any technology or software updates on our product.

⚠️ WARNING

1. Read carefully and understand all **ASSEMBLY AND OPERATION INSTRUCTIONS** before operating.
2. Failure to follow the safety rules and other basic safety precautions may result in serious personal injury.

GENERAL SAFETY RULES

Important reminder

1. Before use, please carefully read the product manual and ensure that you understand and comply with all safety warnings and usage precautions.
2. Do not use this product for other non-designated purposes to avoid unexpected risks.
3. If there are any abnormalities in the product, please stop using it immediately and contact the after-sales service center for consultation or to arrange for repair.

Environmental requirements for use

1. Please use in a dry and well-ventilated environment to avoid extreme environmental conditions such as water activation, high temperature, high humidity, and extremely low temperature.
2. Avoid direct sunlight or contact with fire sources to prevent product damage or fire.
3. Please ensure a stable usage environment and prevent the product from being hit or dropped to avoid damage.

Safety Operation Guidelines

1. When foreign objects are found on the surface of the product, please immediately stop using and remove the foreign objects before continuing to use.

Maintenance and upkeep

1. Regularly maintain and clean the product. Be careful not to use alcohol,

acid or alkali solutions, etc

2. Do not disassemble the product or replace components on your own. If you encounter any malfunctions, please contact the after-sales service center.

Disclaimers

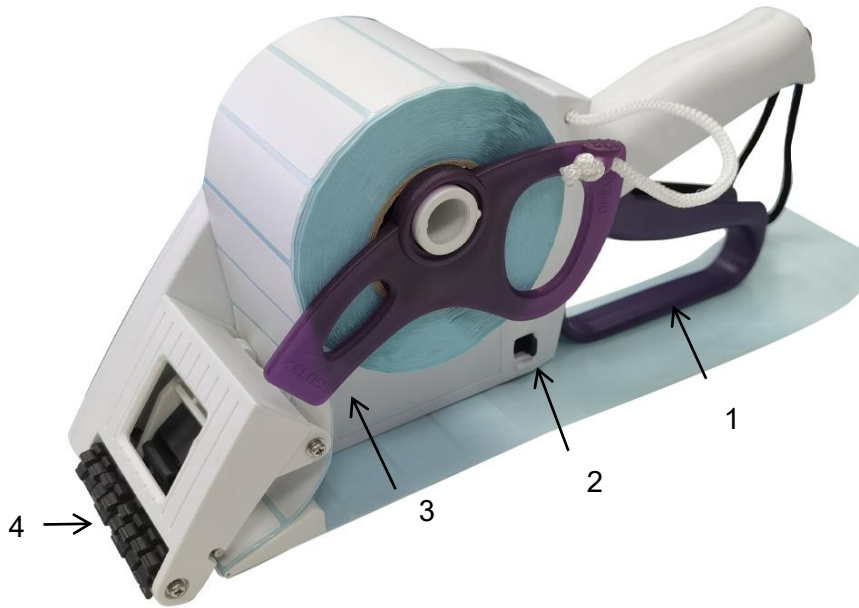
We attach great importance to the safety and quality of our products, but cannot assume responsibility for safety accidents caused by improper use or operation.

SAVE THESE INSTRUCTIONS

MODEL AND PARAMETERS

Model	LD-10
Label Width	15-55mm
Label Length	20-60mm
Label Roll I.D	$20\text{mm} < \text{I.D} < 120\text{mm}$
Label Roll O.D	$< 120\text{mm}$
Material	PP,TPR

STRUCTURE DIAGRAM



1. Grab Handle 2. Label Cover Switch 3. Label Baffle 4. Roller

COMPONENTS

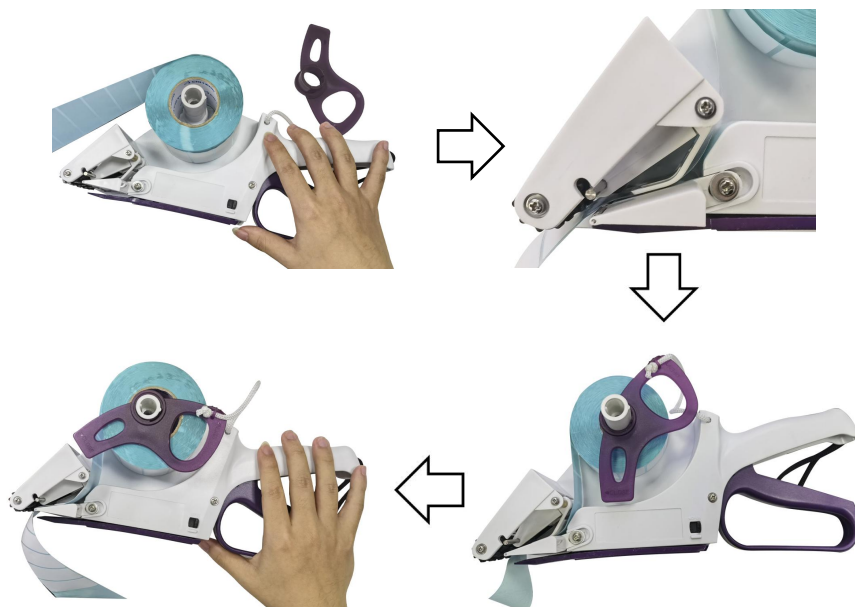
Parts	Model	LD-10
User Manual		x1
Label Roll		x1

OPERATING INSTRUCTIONS

1. Turn the label baffle counterclockwise and remove it as shown.

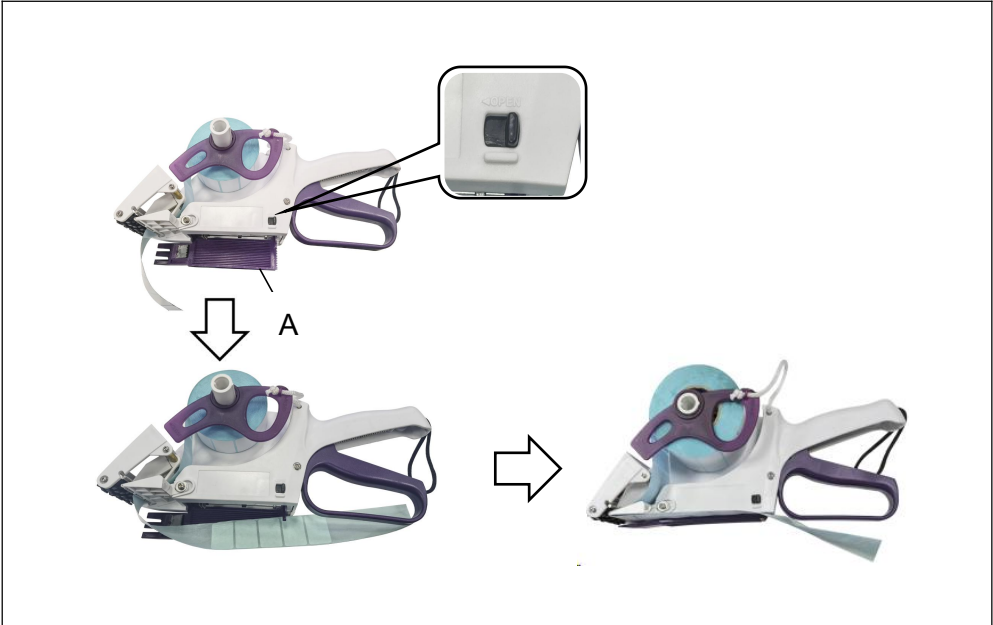


2. Load the label roll and pull out the label to install it as shown. And then install label baffle and tighten it clockwise.



3. Flip the label cover switch to open the label cover(A). Pull out the label and install it, closing the label cover as shown.

The installed labels should be aligned smoothly from beginning to end. Otherwise, the label will be easily torn.



4.Product assembly completed.



The operating instructions

1.Align flat items, move the labeling machine while pressing the labeling machine as shown.



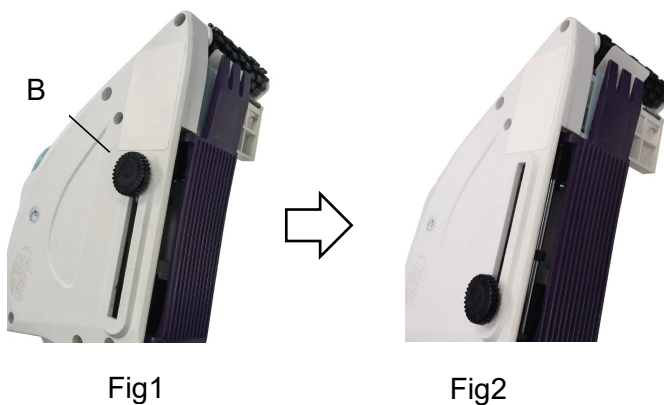
2. label setting

1)Adjust knob position according to label size

2)Loosen the knob counterclockwise and adjust the position of the knob to get the extension length of the label.After adjustment, lock the knob clockwise.

3)Figure 1 corresponds to the least extension of the label, and Figure 2 corresponds to the longest extension of the label.

4)The recommended extension length of the label is 4-6mm.



MAINTENANCE

1. Inspect periodically all parts and accessories and replace them if damaged.
2. Have damaged parts replaced by an authorized service center.
3. Please use a soft, clean cloth when cleaning the machine. Do not flush the machine with water or liquid.
4. Please store the product in a dry and ventilated place.

TROUBLESHOOTING

Problem	Possible Cause	Possible Solution
The label didn't come out	The label roll is not properly installed.	Reinstall the label roll.
	The internal spring of the handle is stuck.	Remove obstacles to make the grab handle work properly.
Labeling failure	The label extension length is set too short.	Label extension length readjust.

Manufacturer: Shanghai muxinmuyeyouxiangongsi
Address: Shuangchenglu
803nong11hao1602A-1609shi, baoshanqu, shanghai
200000 CN.

Imported to AUS: SIHAO PTY LTD. 1 ROKEVA
STREETEASTWOOD NSW 2122 Australia

Imported to USA: Sanven Technology Ltd. Suite 250,
9166 Anaheim Place, Rancho Cucamonga, CA 91730



E-CrossStu GmbH
Mainzer Landstr.69, 60329 Frankfurt am Main.



YH CONSULTING LIMITED.
C/O YH Consulting Limited Office 147, Centurion House,
London Road, Staines-upon-Thames, Surrey, TW18 4AX

VEVOR[®]

TOUGH TOOLS, HALF PRICE

Technical Support and E-Warranty Certificate

www.vevor.com/support