

VEVOR[®]

TOUGH TOOLS, HALF PRICE

Technical Support and E-Warranty Certificate <https://www.vevor.com/support>

FALL PROTECTION LIFELINES USER MANUAL

We continue to be committed to provide you tools with competitive price.

"Save Half", "Half Price" or any other similar expressions used by us only represents an estimate of savings you might benefit from buying certain tools with us compared to the major top brands and does not necessarily mean to cover all categories of tools offered by us. You are kindly reminded to verify carefully when you are placing an order with us if you are actually saving half in comparison with the top major brands.

VEVOR[®]

TOUGH TOOLS, HALF PRICE

Fall Protection Lifelines

MODEL NO.: ROPE-S-25、ROPE-S-50、ROPE-S-100



NEED HELP? CONTACT US!

Have product questions? Need technical support? Please feel free to contact us:

Technical Support and E-Warranty Certificate
www.vevor.com/support

This is the original instruction, please read all manual instructions carefully before operating. VEVOR reserves a clear interpretation of our user manual. The appearance of the product shall be subject to the product you received. Please forgive us that we won't inform you again if there are any technology or software updates on our product.

 **WARNING:**

Please read this manual carefully before using the product. Failure to do so may result in serious injury. SAVE THIS MANUAL

GENERAL INFORMATION

Fall Protection Lifelines			
Trademark	VEVOR [®] TOUGH TOOLS, HALF PRICE	Reference standards	ANSI/ASSE Z359

"VEVOR. Fall Protection Lifelines" is an adjustable restraint device conforming to standard ANSI/ASSE Z359.

This manual must be read and understood in its entirety . These instructions are intended to meet the manufacturer instructions. The user must fully understand the proper equipment use and limitations.

TECHNICAL SPECIFICATIONS

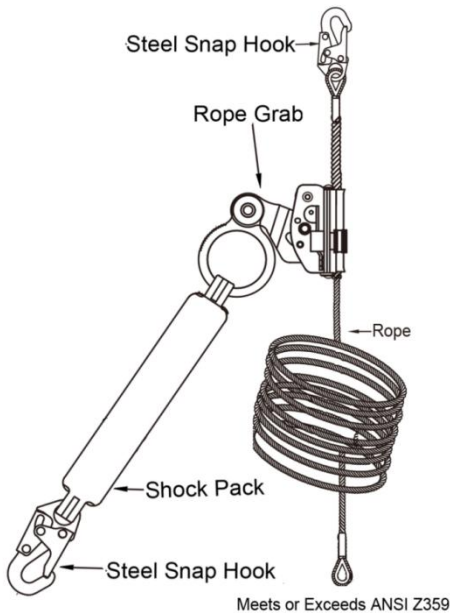
Model	ROPE-S-25	ROPE-S-50	ROPE-S-100
Main Material	Dacron	Dacron	Dacron
Color	Black, yellow	Black, yellow	Black, yellow
Product Dimensions (L*W*H)	440*120*90 mm	440*170*120mm	440*170*150mm
Packing Size(L*W*H)	450*130*100mm	450*180*130mm	450*180*160mm
Net Weight (kg)	2.06	3	4.7
Gross Weight (kg)	2.5	3.5	5.25
line supervisor(ft)	25	50	100

PACKAGE CONTENTS



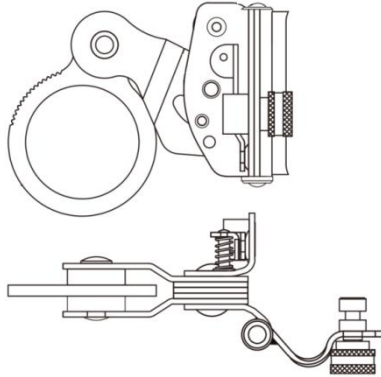
Product instruction

Fall Protection Lifelines construction

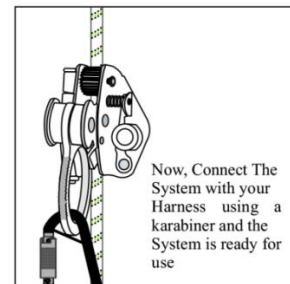
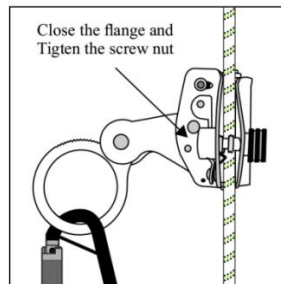
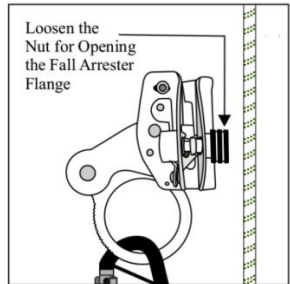
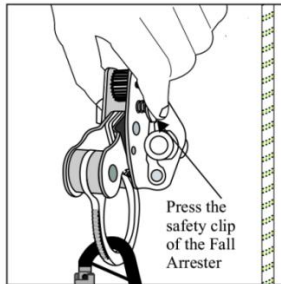
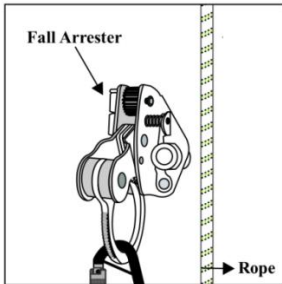


This lifeline is made up of high-strength Polyester braided rope. The diameter of the rope is 14mm. It is provided with a snap hook spliced at one end and the other end has a stop knot. Fall Arrester with lanyard Connected with a Shock Pack and has a Snap Hook at the end. attachment to the harness. The Fall Arrester is used over the twisted rope lifeline.

Fall Arrester Installation and Use



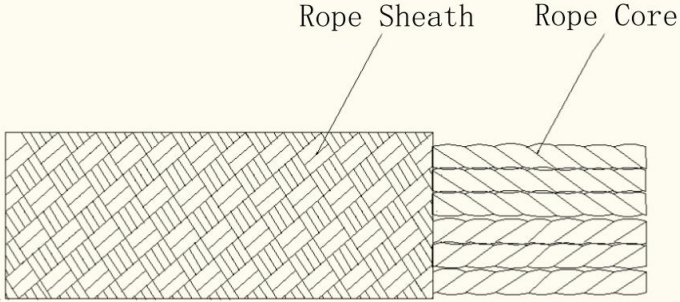
Follow these steps to install the Fall Arrester



1) Eliminate all risk of lower end and termination. Either ensure Fall Arrester will prevent the user from striking the next lower level and that there is always adequate fall clearance, or that Fall Arrester will not reach the leading edge of any fall hazard when used at its full length. NEVER tie a knot in a lifeline, except at the

- extreme bottom of the lifeline in order to prevent Fall Arrest from detaching.
- 2) Eliminate or minimize all risks of swing falls.
 - 3) Attach snap hook with integrated Shock Pack to compatible anchorage connector.
 - 4) Attach snap hook with integrated Fall Arrest to applicable harness D-ring.
 - 5) To move along lifeline, compress and hold Fall Arrest handle. ALWAYS adjust Fall Arrest to reduce slack in the system as much as possible. When attached to a Fall Arrest and moving along work surface, ALWAYS do so by moving Fall Arrester along rope, and NEVER by moving only the rope itself. For example, if moving from a roof edge to the roof peak, engage handle of fall Arrester and moves it up the Fall Arrester while walking to peak. DO NOT move up to the roof peak by moving Fall Arrester and keep Fall Arrest stationary; doing so can create free fall in excess of levels permitted by the system.
 - 6) To restrict Fall Arrest movement along lifeline, release Fall Arrest handle.
 - 7) Fall Arrester comes with an anti-panic feature that automatically acts in case the user holds the fall arrester and grasps it too tightly. However, care must be taken that never grab a fall arrester in the event of a fall.
 - 8) NEVER work above the Fall Arrester unless free fall is limited to 6 or less. One connection per Fall Arrester. NEVER attempt to remove components from Fall Arrester

PERIODIC CHECKING OF PERSONAL PROTECTIVE EQUIPMENT

Description	 <p>The diagram illustrates the internal structure of a rope. On the left, the 'Rope Sheath' is shown as a dense, woven fabric layer. On the right, the 'Rope Core' is shown as a bundle of individual fibers or strands. Labels with leader lines point to each part.</p>
-------------	--





PERIODIC CHECKING OF PERSONAL PROTECTIVE EQUIPMENT GENERAL REMARKS

Carrying out regular periodic checks (at intervals predetermined by the manufacturer) is vital for ensuring the equipment's efficiency and durability and the user's safety. The performance of regular periodic inspections is required by the ASTM F887-16 standard and it is therefore mandatory only for some device categories, whose instructions for use will expressly indicate such obligation. Carrying out periodical controls doesn't relieve the user from the obligation to perform the controls before and after each use, nor to require an extraordinary

periodic check, in case an outstanding event occurs (ex, a fall, even from a low height, a change of user etc.), or in case of doubts about the correct functioning of the device. Attention! Before first use, the owner/user of PPE must fill in the "device identification sheet" when present in the user's instructions of the same, Attention! The Inspector, after having carried out the periodic inspection, is responsible for the proper functioning of a PPE. The check must be performed with the highest accuracy, without haste, and after completing all the necessary steps.

Regular periodic checks must be carried out: if the previous use of the device is unknown; at least every 12 months, with normal/standard use; in the presence of anomalies found during the inspections before and after each use; except for exceptions, whenever there is a change of user; filling the periodic inspection sheet in; Attention! The periodic inspection sheet also exists in the optimized version for kits or systems of PPE. Attention! Provided that the minimum mandatory frequency for the periodic inspection is 12 months, it can be increased (i.e. 3 months, 6 months etc.) according to the national regulations in force or the frequency, intensity and method of use (i.e. heavy use, use in a marine environment, corrosive atmospheres etc.).

The periodic inspection sheet must be filled out: following the specific procedure for each type of device. climbing technology.com); consulting the photographic material available, where present; consulting the instructions for use of the device; examining the device in a suitable, tidy and well-lit environment. The photographic material at the end of the procedures is accompanied by an explanation caption and by the following symbols:

	<p>The device is in good condition or has only minor damages: it is therefore suitable for use.</p>
	<p>The device has medium/major damages that affect its primary functions and, as a consequence, must be discarded.</p>
	<p>The device has defects that can be solved through lubrication or cleaning. If such defects are not solved, the device must be discarded.</p>
	<p>The device has defects.</p>

DEVICE PERIODIC CHECK SHEET	
1) Known product history	
1.1	Check the existence and the readability of the marking details.
1.2	Check that device has not exceeded the storage and/or in-use lifetime, as stated in the specific instructions for use.
1.3	Check that the device is intact and no parts are missing (check against a new product).
1.4	Check that the device has not been modified outside the factory or serviced in a non-approved centre (check against a new product).
1.5	Any PPE showing unexpected degradation should be quarantined, pending a detailed inspection. The user should: <ul style="list-style-type: none"> - Provide precise information on the usage conditions. - Report any exceptional event regarding his PPE. (Examples: fall or fall arrest, use or storage at extreme temperatures, modification outside manufacturer's facilities...).
2) Checking the condition of the sheath	
2.1	Check the condition of the sheath over the full length of the rope. Make sure there are no cuts, burns, frayed strands, fuzzy areas, or signs of chemicals...
3) Checking the condition of the core	
3.1	Do a tactile inspection of the core over the full length of the rope, as indicated in the drawing. This allows you to detect areas where the core is damaged (hard spots, swelling, soft or crushed areas...).
4) Checking the condition of the core	
4.1	To check the length of your rope, follow the steps below: <ol style="list-style-type: none"> 1. Completely uncoil the rope. 2. Check the middle mark of the rope. There is a simple way to find the middle of the rope: hold the two rope ends together, then slide the two strands simultaneously through your hands until the middle of the rope is reached. If your rope has a middle mark, check it for accuracy. If the mark is OK, go to the next step. If the mark is not in the right place or if there is no middle mark, place a piece of adhesive tape at the rope's midpoint to help measure its length.

DEVICE PERIODIC CHECK SHEET

No.	Date	Reason for check	Name and signature of the person responsible for checking.	Notes (defects found, repairs performed or other relevant information)	Check results	Date of next check
1		<input type="checkbox"/> Periodic <input type="checkbox"/> Additional			<input type="checkbox"/> Device fit for use. <input type="checkbox"/> Device unfit for use	
2		<input type="checkbox"/> Periodic <input type="checkbox"/> Additional			<input type="checkbox"/> Device fit for use. <input type="checkbox"/> Device unfit for use	
3		<input type="checkbox"/> Periodic <input type="checkbox"/> Additional			<input type="checkbox"/> Device fit for use. <input type="checkbox"/> Device unfit for use	
4		<input type="checkbox"/> Periodic <input type="checkbox"/> Additional			<input type="checkbox"/> Device fit for use. <input type="checkbox"/> Device unfit for use	
5		<input type="checkbox"/> Periodic <input type="checkbox"/> Additional			<input type="checkbox"/> Device fit for use. <input type="checkbox"/> Device unfit for use	
6		<input type="checkbox"/> Periodic <input type="checkbox"/> Additional			<input type="checkbox"/> Device fit for use. <input type="checkbox"/> Device unfit for use	

WARNINGS

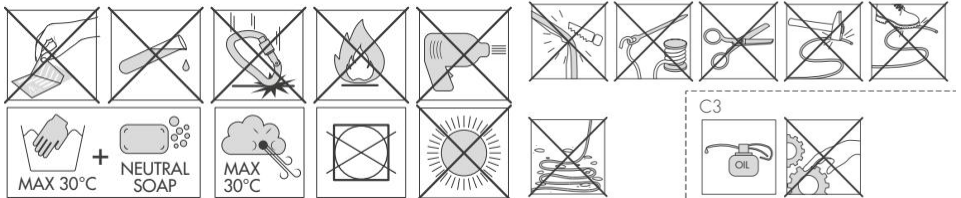
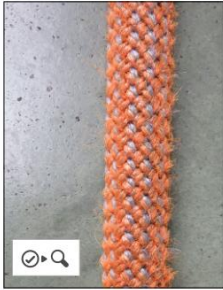
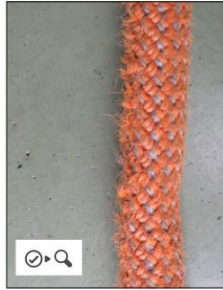


PHOTO APPENDIX

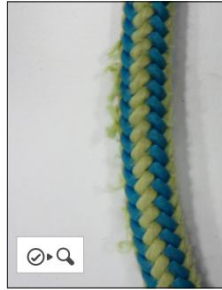
• Fuzzy rope



• Fuzzy rope



• Fuzzy area



• Damaged rope end



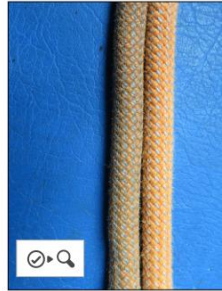
• Cut



• Cut



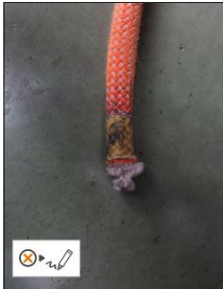
• Discoloration



• Trace of paint



• Illegible marking



• Illegible marking



• Trace of chemicals



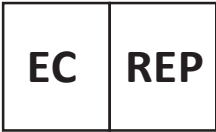
• Trace of chemicals



COMPLETION



Address: Shuangchenglu 803nong11hao1602A-1609shi, baoshanqu, shanghai 200000
CN. **Imported to AUS:** SIHAO PTY LTD, 1 ROKEVA STREETEASTWOOD NSW 2122
Australia **Imported to USA:** Sanven Technology Ltd., Suite 250, 9166 Anaheim Place,
Rancho Cucamonga, CA 91730



E-CrossStu GmbH.
Mainzer Landstr.69, 60329
Frankfurt am Main.



YH CONSULTING LIMITED.
C/O YH Consulting Limited Office 147,
Centurion House, London Road, Staines-
upon-Thames, Surrey, TW18 4AX

Made In China

VEVOR[®]

TOUGH TOOLS, HALF PRICE

Support and E-Warranty Certificate

www.vevor.com/support