

VEVOR[®]

TOUGH TOOLS, HALF PRICE

STAIR CLIMBING CART

2125B

USER MANUAL

We continue to be committed to provide you tools with competitive price. "Save Half", "Half Price" or any other similar expressions used by us only represents an estimate of savings you might benefit from buying certain tools with us compared to the major top brands and does not necessarily mean to cover all categories of tools offered by us. You are kindly reminded to verify carefully when you are placing an order with us if you are actually saving half in comparison with the top major brands.

VEVOR[®]

TOUGH TOOLS, HALF PRICE

STAIR CLIMBING CART



NEED HELP? CONTACT US!

Have product questions? Need technical support? Please feel free to contact us:

Technical Support and E-Warranty Certificate

www.vevor.com/support

This is the original instruction, please read all manual instructions carefully before operating. VEVOR reserves a clear interpretation of our user manual. The appearance of the product shall be subject to the product you received. Please forgive us that we won't inform you again if there are any technology or software updates on our product.

Safety Instructions

WARNING:

1. Please do not put it near flammable materials.
2. It is forbidden to carry people at any condition.
3. Please pay attention to safety when going up and down stairs.
4. Overload is strictly prohibited.
5. Don't move too fast when passing potholes areas.

Model and Parameters

Model	2125B
Maximum Load(Flat Ground)	250kg
Maximum Load(Climb Stairs)	150kg
Overall Dimensions	152.8*45.8*52.3cm

Structure Diagram



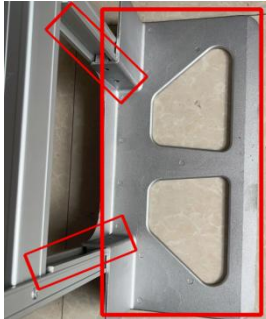
- 1.Handle 1
- 2.Handle 2
- 3.Frame
- 4.Trim Strip
- 5.Climbing Wheel
- 6.Wheel Frame
- 7.Tray

Components

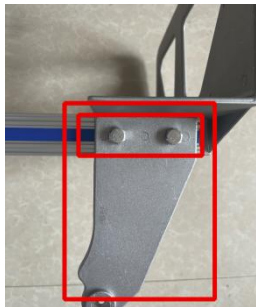
		
A.Frame(x1)	B.Wheel Frame(x2)	C.Wheel Sets(x2)
		
D.Tray(x1)	E.Reinforcement(x2)	F.Axle(x1)
		
G.Handle 1(x1)	H.Handle 2(x1)	I.Trim Strip (x1)
		
J.Washer(x2)	K.Cotter Pin(x4)	L.Outer Hexagon Bolt(x4)
		
N.Jam Nut(x8)	M.Crosshead Bolt(x4)	O.Installation Tools(x3)

Assembly and Use

1. Place the reinforcement(E) inside the frame(A) (below the hole), and then insert the tray(D).



2. Place the wheel frame (B) on the outside of the frame as shown in the figure, align it with the hole, and finally fix it with the outer hexagon bolt (L+N).



3. Insert the axle (F) into the wheel frame, insert the cotter pin (K) inside the wheel frame and bend it, and put the gasket (J) outside.



4. Install the wheel set (C), insert the cotter pin (K) and bend it.



5. Put in handle 2 (H), handle 1 (G) and trim strip (I) in turn, align them with the holes and fix them with crosshead bolts (M+N).



Troubleshooting Instruction

Problem	Reasons	Solution
Wheel rolling is not smooth.	Insufficient lubrication.	Add oil to lubricate the rotating parts.
Velcro is not sticky.	The Velcro has sundries.	Clean the hair, thread, and other sundries on the Velcro.

Maintenance

1. Avoid prolonged exposure to the sun to avoid aging.
2. Avoid children taking the stair climbing cart to play.

Imported to USA: Sanven Technology Ltd., Suite 250, 9166 Anaheim Place, Rancho Cucamonga, CA 91730

VEVOR[®]

TOUGH TOOLS, HALF PRICE

Technical Support and E-Warranty Certificate
www.vevor.com/support

VEVOR[®]

TOUGH TOOLS, HALF PRICE

**CHARIOT MONTE-ESCALIER
2125B
MANUEL D' UTILISATION**

We continue to be committed to provide you tools with competitive price. "Save Half", "Half Price" or any other similar expressions used by us only represents an estimate of savings you might benefit from buying certain tools with us compared to the major top brands and does not necessarily mean to cover all categories of tools offered by us. You are kindly reminded to verify carefully when you are placing an order with us if you are actually saving half in comparison with the top major brands.

VEVOR®

TOUGH TOOLS, HALF PRICE

STAIR CLIMBING CART



NEED HELP? CONTACT US!

Have product questions? Need technical support? Please feel free to contact us:

Technical Support and E-Warranty Certificate

www.vevor.com/support

This is the original instruction, please read all manual instructions carefully before operating. VEVOR reserves a clear interpretation of our user manual. The appearance of the product shall be subject to the product you received. Please forgive us that we won't inform you again if there are any technology or software updates on our product.

Consignes de sécurité

AVERTISSEMENT:

2. Veuillez ne pas le placer à proximité de matériaux inflammables.
2. Il est interdit de transporter des personnes dans n'importe quelle condition.
3. Veuillez faire attention à la sécurité lorsque vous montez et descendez les escaliers.
4. La surcharge est strictement interdite.
5. Ne vous déplacez pas trop vite lorsque vous passez près des nids-de-poule.

Modèle et paramètres

Modèle	2125B
Charge maximale (sol plat)	250 kg
Charge maximale (monter les escaliers)	150 kg
Dimensions hors tout	152,8*45,8*52,3 cm

Schéma de structure



- 1.Handle 1
- 2.Handle 2
- 3.Frame
- 4.Trim Strip
- 5.Climbing Wheel
- 6.Wheel Frame
- 7.Tray

Composants

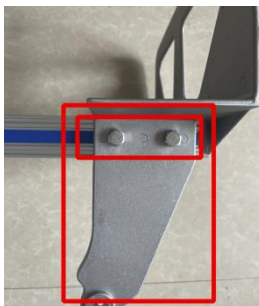
		
<p>A. Cadre (x1)</p>	<p>B. Cadre de roue (x2)</p>	<p>C. Ensembles de roues (x2)</p>
		
<p>Plateau D (x1)</p>	<p>E. Renfort (x2)</p>	<p>Essieu F (x1)</p>
		
<p>G. Poignée 1 (x1)</p>	<p>H. Poignée 2 (x1)</p>	<p>I. Bande de finition (x1)</p>
		
<p>Rondelle J (x2)</p>	<p>K. Goupille fendue (x4)</p>	<p>L. Boulon hexagonal extérieur (x4)</p>
		
<p>N. Contre-écrou (x8)</p>	<p>Boulon à tête cruciforme M. (x4)</p>	<p>O. Outils d'installation (x3)</p>

Montage et utilisation

1. Placez le renfort (E) à l'intérieur du cadre (A) (sous le trou), puis insérez le plateau (D).



2. Placez le cadre de roue (B) à l'extérieur du cadre comme indiqué sur la figure, alignez-le avec le trou et fixez-le enfin avec le boulon hexagonal extérieur (L+N).



3. Insérez l'essieu (F) dans le cadre de la roue, insérez la goupille fendue (K) à l'intérieur du cadre de la roue et pliez-la, puis placez le joint (J) à l'extérieur.



4. Installez l'ensemble de roues (C), insérez la goupille fendue (K) et pliez-la.



5. Insérez successivement la poignée 2 (H), la poignée 1 (G) et la bande de finition (I), alignez-les avec les trous et fixez-les avec des boulons à tête cruciforme (M+N).



Instructions de dépannage

Problème	Raisons	Solution
Le roulement des roues n'est pas régulier .	Insuffisant lubrification .	Ajoutez de l'huile pour lubrifier les pièces rotatives .
Le velcro n'est pas collant .	Le Velcro a des accessoires .	Nettoyez les cheveux, les fils et autres objets divers sur le Velcro .

Entretien

1. Évitez l'exposition prolongée au soleil pour éviter le vieillissement.
2. Évitez que les enfants prennent le chariot monte-escalier pour jouer.

Importé aux États-Unis : Sanven Technology Ltd., Suite 250, 9166
Anaheim Place, Rancho Cucamonga, CA 91730

VEVOR[®]

TOUGH TOOLS, HALF PRICE

Technique Certificat d'assistance et de garantie électronique
www.vevor.com/support

VEVOR[®]

TOUGH TOOLS, HALF PRICE

**TREPPENKARRET
2125B
BENUTZERHANDBUCH**

We continue to be committed to provide you tools with competitive price. "Save Half", "Half Price" or any other similar expressions used by us only represents an estimate of savings you might benefit from buying certain tools with us compared to the major top brands and does not necessarily mean to cover all categories of tools offered by us. You are kindly reminded to verify carefully when you are placing an order with us if you are actually saving half in comparison with the top major brands.

VEVOR[®]

TOUGH TOOLS, HALF PRICE

STAIR CLIMBING CART



NEED HELP? CONTACT US!

Have product questions? Need technical support? Please feel free to contact us:

Technical Support and E-Warranty Certificate

www.vevor.com/support

This is the original instruction, please read all manual instructions carefully before operating. VEVOR reserves a clear interpretation of our user manual. The appearance of the product shall be subject to the product you received. Please forgive us that we won't inform you again if there are any technology or software updates on our product.

Sicherheitshinweise

WARNUNG:

3. Bitte stellen Sie es nicht in die Nähe von brennbaren Materialien.
2. Es ist verboten, Personen mitzunehmen unter allen Bedingungen.
3. Achten Sie beim Treppensteigen auf die Sicherheit.
4. Überlastung ist strengstens verboten.
5. Fahren Sie nicht zu schnell durch Bereiche mit Schlaglöchern.

Modell und Parameter

Modell	2125B
Maximale Belastung (ebener Boden)	250 kg
Maximale Belastung (C - Gliedmaßentreppe)	150 kg
Gesamtabmessungen	152,8*45,8*52,3 cm

Strukturdiagramm



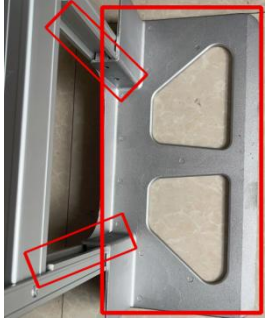
- 1.Handle 1
- 2.Handle 2
- 3.Frame
- 4.Trim Strip
- 5.Climbing Wheel
- 6.Wheel Frame
- 7.Tray

Komponenten

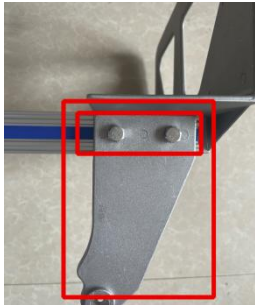
		
A. Rahmen(x1)	B. Radrahmen (x2)	C. Radsätze (x2)
		
D. Fach (x1)	E. Verstärkung (x2)	F. Achse (x1)
		
G. Griff 1 (x1)	H. Griff 2 (x1)	I. Zierleiste (x1)
		
J. Unterlegscheibe (x2)	K. Splintstift (x4)	L. Äußere Sechskantschraube (x4)
		
N. Kontermutter (x8)	M. Kreuzschlitzschraube (x4)	O. Installationswerkzeuge (x3)

Montage und Verwendung

1. Platzieren Sie die Verstärkung (E) im Rahmen (A) (unterhalb des Lochs) und setzen Sie dann das Tablett (D) ein.



2. Setzen Sie den Radrahmen (B) wie in der Abbildung gezeigt auf die Außenseite des Rahmens, richten Sie ihn an der Bohrung aus und befestigen Sie ihn schließlich mit der äußeren Sechskantschraube (L+N).



3. Setzen Sie die Achse (F) in den Radrahmen ein, stecken Sie den Splint (K) in den Radrahmen und biegen Sie ihn, und legen Sie die Dichtung (J) außen an.



4. Radsatz (C) montieren, Splintbolzen (K) einsetzen und umbiegen.



5. Griff 2 (H), Griff 1 (G) und Zierleiste (I) nacheinander einsetzen, an den Bohrungen ausrichten und mit Kreuzschlitzschrauben (M+N) fixieren.



Anleitung zur Fehlerbehebung

Problem	Gründe	Lösung
Das Rollen der Räder läuft nicht reibungslos .	Unzureichend Schmierung .	Geben Sie Öl hinzu, um die rotierenden Teile zu schmieren .
Der Klettverschluss ist nicht klebrig .	Der Klettverschluss hat Kleinigkeiten .	Entfernen Sie Haare, Fäden und andere Fremdkörper vom Klettverschluss .

Wartung

1. Vermeiden Sie längere Sonneneinstrahlung, um der Hautalterung vorzubeugen.
2. Vermeiden Sie, dass Kinder den Treppensteigerwagen zum Spielen

mitnehmen.

Importiert in die USA: Sanven Technology Ltd., Suite 250, 9166
Anaheim Place, Rancho Cucamonga, CA 91730

VEVOR[®]

TOUGH TOOLS, HALF PRICE

Technisch Support und E-Garantie-Zertifikat
www.vevor.com/support

VEVOR[®]

TOUGH TOOLS, HALF PRICE

**CARRELLO PER SALIRE LE SCALE
2125B
MANUALE D' USO**

We continue to be committed to provide you tools with competitive price. "Save Half", "Half Price" or any other similar expressions used by us only represents an estimate of savings you might benefit from buying certain tools with us compared to the major top brands and does not necessarily mean to cover all categories of tools offered by us. You are kindly reminded to verify carefully when you are placing an order with us if you are actually saving half in comparison with the top major brands.

VEVOR®

TOUGH TOOLS, HALF PRICE

STAIR CLIMBING CART



NEED HELP? CONTACT US!

Have product questions? Need technical support? Please feel free to contact us:

Technical Support and E-Warranty Certificate

www.vevor.com/support

This is the original instruction, please read all manual instructions carefully before operating. VEVOR reserves a clear interpretation of our user manual. The appearance of the product shall be subject to the product you received. Please forgive us that we won't inform you again if there are any technology or software updates on our product.

Istruzioni di sicurezza

AVVERTIMENTO:

4. Si prega di non posizionarlo vicino a materiali infiammabili.
2. È vietato trasportare persone in qualsiasi condizione.
3. Prestare attenzione alla sicurezza quando si salgono e scendono le scale.
4. Il sovraccarico è severamente vietato.
5. Non procedere troppo velocemente quando si attraversano zone con buche.

Modello e parametri

Modello	2125B
Carico massimo (terreno piano)	250 kg
Carico massimo (scala scale)	150 kg
Dimensioni complessive	152,8*45,8*52,3 cm

Diagramma della struttura S



- 1.Handle 1
- 2.Handle 2
- 3.Frame
- 4.Trim Strip
- 5.Climbing Wheel
- 6.Wheel Frame
- 7.Tray

Componenti

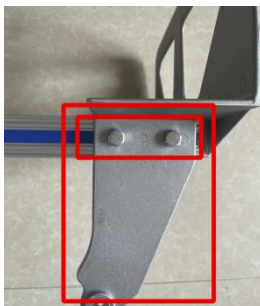
		
<p>A. Telaio(x1)</p>	<p>B. Telaio ruota (x2)</p>	<p>C. Set di ruote (x2)</p>
		
<p>D. Vassoio (x1)</p>	<p>E. Rinforzo(x2)</p>	<p>F. Assale(x1)</p>
		
<p>G. Maniglia 1(x1)</p>	<p>H. Maniglia 2(x1)</p>	<p>I. Striscia di rifinitura (x1)</p>
		
<p>J. Rondella(x2)</p>	<p>K. Coppiglia (x4)</p>	<p>L. Bullone esagonale esterno (x4)</p>
		
<p>N. Controdado (x8)</p>	<p>Bullone a testa traversa (x4)</p>	<p>O. Strumenti di installazione (x3)</p>

Montaggio e utilizzo

1. Posizionare il rinforzo (E) all'interno del telaio (A) (sotto il foro), quindi inserire il vassoio (D).



2. Posizionare il telaio della ruota (B) sulla parte esterna del telaio come mostrato in figura, allinearlo con il foro e infine fissarlo con il bullone esagonale esterno (L+N).



3. Inserire l'asse (F) nel telaio della ruota, inserire la coppia (K) all'interno del telaio della ruota e piegarla, quindi posizionare la guarnizione (J) all'esterno.



4. Installare il set di ruote (C), inserire la coppia (K) e piegarla.



5. Inserire a turno la maniglia 2 (H), la maniglia 1 (G) e la modanatura (I), allinearle con i fori e fissarle con bulloni a croce (M+N).



Istruzioni per la risoluzione dei problemi

Problema	Motivi	Soluzione
Il rotolamento delle ruote non è fluido .	Insufficiente lubrificazione .	Aggiungere olio per lubrificare le parti rotanti .
Il velcro non è appiccicoso .	Il velcro ha delle cose varie .	Pulisci i capelli, il filo e altri residui dal velcro .

Manutenzione

1. Evitare l'esposizione prolungata al sole per prevenire l'invecchiamento.
2. Evitare che i bambini usino il carrello saliscale per giocare.

Importato negli USA: Sanven Technology Ltd., Suite 250, 9166 Anaheim Place, Rancho Cucamonga, CA 91730

VEVOR[®]

TOUGH TOOLS, HALF PRICE

Tecnico Supporto e certificato di garanzia elettronica
www.vevor.com/support

VEVOR[®]

TOUGH TOOLS, HALF PRICE

**CARRITO SUBIR ESCALERAS
2125B
MANUAL DEL USUARIO**

We continue to be committed to provide you tools with competitive price. "Save Half", "Half Price" or any other similar expressions used by us only represents an estimate of savings you might benefit from buying certain tools with us compared to the major top brands and does not necessarily mean to cover all categories of tools offered by us. You are kindly reminded to verify carefully when you are placing an order with us if you are actually saving half in comparison with the top major brands.

VEVOR[®]

TOUGH TOOLS, HALF PRICE

STAIR CLIMBING CART



NEED HELP? CONTACT US!

Have product questions? Need technical support? Please feel free to contact us:

Technical Support and E-Warranty Certificate

www.vevor.com/support

This is the original instruction, please read all manual instructions carefully before operating. VEVOR reserves a clear interpretation of our user manual. The appearance of the product shall be subject to the product you received. Please forgive us that we won't inform you again if there are any technology or software updates on our product.

Instrucciones de seguridad

ADVERTENCIA:

5. No lo coloque cerca de materiales inflamables.
2. Está prohibido llevar personas. en cualquier condición.
3. Preste atención a la seguridad al subir y bajar escaleras.
4. La sobrecarga está estrictamente prohibida.
5. No te muevas demasiado rápido al pasar por zonas con baches.

Modelo y parámetros

Modelo	2125B
Carga máxima (suelo plano)	250 kilos
Carga máxima (escaleras de acceso rápido)	150 kilos
Dimensiones generales	152,8 x 45,8 x 52,3 cm

Diagrama de estructura



- 1.Handle 1
- 2.Handle 2
- 3.Frame
- 4.Trim Strip
- 5.Climbing Wheel
- 6.Wheel Frame
- 7.Tray

C componentes

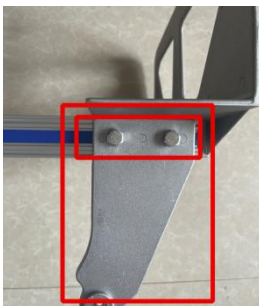
		
<p style="text-align: center;">A. Cuadro(x1)</p>	<p style="text-align: center;">B. Marco de rueda (x2)</p>	<p style="text-align: center;">C. Juegos de ruedas (x2)</p>
		
<p style="text-align: center;">Bandeja D (x1)</p>	<p style="text-align: center;">E. Refuerzo(x2)</p>	<p style="text-align: center;">F. Eje(x1)</p>
		
<p style="text-align: center;">G. Mango 1(x1)</p>	<p style="text-align: center;">H. Mango 2(x1)</p>	<p style="text-align: center;">I. Tira de moldura (x1)</p>
		
<p style="text-align: center;">Arandela J (x2)</p>	<p style="text-align: center;">K. Pasador de chaveta (x4)</p>	<p style="text-align: center;">L. Perno hexagonal exterior (x4)</p>
		
<p style="text-align: center;">N. Tuerca de seguridad (x8)</p>	<p style="text-align: center;">M. Perno de cruceta (x4)</p>	<p style="text-align: center;">O. Herramientas de instalación (x3)</p>

Montaje y uso

1. Coloque el refuerzo (E) dentro del marco (A) (debajo del orificio) y luego inserte la bandeja (D).



2. Coloque el marco de la rueda (B) en el exterior del marco como se muestra en la figura, alinéelo con el orificio y finalmente fíjelo con el perno hexagonal exterior (L+N).



3. Inserte el eje (F) en el marco de la rueda, inserte el pasador de chaveta (K) dentro del marco de la rueda y dóblelo, y coloque la junta (J) afuera.



4. Instale el juego de ruedas (C), inserte el pasador de chaveta (K) y dóblelo.



5. Coloque la manija 2 (H), la manija 1 (G) y la tira de moldura (I) uno por uno, alinéelas con los orificios y fíjelas con pernos de cabeza cruciforme (M+N).



Instrucciones para la resolución de problemas

Problema	Razones	Solución
El rodamiento de las ruedas no es suave .	Insuficiente lubricación .	Agregue aceite para lubricar las partes giratorias .
El velcro no es pegajoso .	El velcro tiene artículos diversos .	Limpie el cabello, el hilo y otros elementos diversos del velcro .

Mantenimiento

1. Evitar la exposición prolongada al sol para evitar el envejecimiento.
2. Evite que los niños utilicen el carrito para subir escaleras para jugar.

Importado a EE. UU.: Sanven Technology Ltd., Suite 250, 9166 Anaheim Place, Rancho Cucamonga, CA 91730

VEVOR[®]

TOUGH TOOLS, HALF PRICE

Técnico Certificado de soporte y garantía electrónica
www.vevor.com/support

VEVOR[®]

TOUGH TOOLS, HALF PRICE

WÓZEK DO WSPINACZKI PO SCHODACH 2125B INSTRUKCJA OBSŁUGI

We continue to be committed to provide you tools with competitive price. "Save Half", "Half Price" or any other similar expressions used by us only represents an estimate of savings you might benefit from buying certain tools with us compared to the major top brands and does not necessarily mean to cover all categories of tools offered by us. You are kindly reminded to verify carefully when you are placing an order with us if you are actually saving half in comparison with the top major brands.

VEVOR[®]

TOUGH TOOLS, HALF PRICE

STAIR CLIMBING CART



NEED HELP? CONTACT US!

Have product questions? Need technical support? Please feel free to contact us:

Technical Support and E-Warranty Certificate

www.vevor.com/support

This is the original instruction, please read all manual instructions carefully before operating. VEVOR reserves a clear interpretation of our user manual. The appearance of the product shall be subject to the product you received. Please forgive us that we won't inform you again if there are any technology or software updates on our product.

Instrukcje bezpieczeństwa

OSTRZEŻENIE:

6. Proszę nie umieszczać go w pobliżu materiałów łatwopalnych.
2. Zabrania się przewożenia osób w każdych warunkach.
3. Prosimy zachować ostrożność podczas wchodzenia i schodzenia po schodach.
4. Przeciążanie jest surowo zabronione.
5. Nie poruszaj się zbyt szybko przy pokonywaniu dziur w drodze.

Model i parametry













Model	2125B
Maksymalne obciążenie (podłoże płaskie)	250 kg
Maksymalne obciążenie (schody)	150kg
Wymiary całkowite	152,8*45,8*52,3 cm

Schemat struktury S



- 1.Handle 1
- 2.Handle 2
- 3.Frame
- 4.Trim Strip
- 5.Climbing Wheel
- 6.Wheel Frame
- 7.Tray

Komponenty

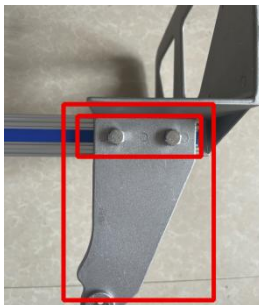
		
A. Ramka (x1)	B. Rama koła (x2)	C. Zestawy kół (x2)
		
Taca D (x1)	E. Wzmocnienie (x2)	Oś F (x1)
		
G. Uchwyt 1 (x1)	H. Uchwyt 2 (x1)	I. Pasek wykończeniowy (x1)
		
Podkładka J. (x2)	K. Zawleczka (x4)	L. Śruba sześciokątna zewnętrzna (x4)
		
N. Nakrętka zabezpieczająca (x8)	M. Śruba krzyżakowa (x4)	O. Narzędzia instalacyjne (x3)

Montaż i użytkowanie

1. Umieść wzmocnienie (E) wewnątrz ramy (A) (pod otworem), a następnie włóż tackę (D).



2. Umieść ramę koła (B) na zewnątrz ramy, jak pokazano na rysunku, wyrównaj ją z otworem i na koniec przymocuj ją zewnętrzną śrubą sześciokątną (L+N).



3. Włóż oś (F) do ramy koła, włóż zawleczkę (K) do ramy koła i wygnij ją, a następnie umieść uszczelkę (J) na zewnątrz.



4. Zamontuj zestaw kół (C), włóż zawleczkę (K) i wygnij ją.



5. Zamontuj kolejno uchwyt 2 (H), uchwyt 1 (G) i listwę wykończeniową (I), wyrównaj je z otworami i przymocuj śrubami krzyżakowymi (M+N).



Instrukcja rozwiązywania problemów

Problem	Powody	Rozwiązanie
Toczenie się kół nie jest płynne .	Niewystarczający smarowanie .	Dodaj olej, aby nasmarować obracające się części .
Rzep nie jest klejący .	Na rzepie znajdują się różne drobiazgi .	Wyczyść włosy, nici i inne drobiazgi znajdujące się na rzepie .

Konserwacja

1. Unikaj długotrwałego wystawiania się na działanie promieni słonecznych, aby zapobiec starzeniu się skóry.
2. Unikaj używania wózka do wspinania się po schodach przez dzieci.

Importowane do USA: Sanven Technology Ltd., Suite 250, 9166
Anaheim Place, Rancho Cucamonga, CA 91730

VEVOR[®]

TOUGH TOOLS, HALF PRICE

Techniczny Wsparcie i certyfikat e-gwarancji
www.vevor.com/support

VEVOR[®]

TOUGH TOOLS, HALF PRICE

**TRAP KLIMWAGEN
2125B
GEBRUIKSAANWIJZING**

We continue to be committed to provide you tools with competitive price. "Save Half", "Half Price" or any other similar expressions used by us only represents an estimate of savings you might benefit from buying certain tools with us compared to the major top brands and does not necessarily mean to cover all categories of tools offered by us. You are kindly reminded to verify carefully when you are placing an order with us if you are actually saving half in comparison with the top major brands.

VEVOR[®]

TOUGH TOOLS, HALF PRICE

STAIR CLIMBING CART



NEED HELP? CONTACT US!

Have product questions? Need technical support? Please feel free to contact us:

Technical Support and E-Warranty Certificate

www.vevor.com/support

This is the original instruction, please read all manual instructions carefully before operating. VEVOR reserves a clear interpretation of our user manual. The appearance of the product shall be subject to the product you received. Please forgive us that we won't inform you again if there are any technology or software updates on our product.

Veiligheidsinstructies

WAARSCHUWING:

7. Plaats het niet in de buurt van brandbare materialen.
2. Het is verboden om personen te vervoeren onder alle omstandigheden.
3. Let op de veiligheid wanneer u de trap op- en afgaat.
4. Overbelasting is ten strengste verboden.
5. Rijd niet te snel als u gaten in de weg passeert.

Model en parameters

Model	2125B
Maximale belasting (vlakke grond)	250kg
Maximale belasting (trappen beklimmen)	150kg
Algemene afmetingen	152,8*45,8*52,3cm

Structuurdiagram



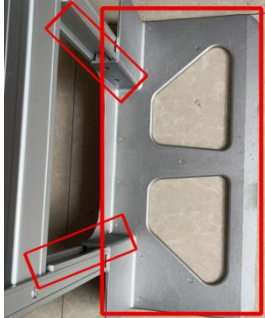
- 1.Handle 1
- 2.Handle 2
- 3.Frame
- 4.Trim Strip
- 5.Climbing Wheel
- 6.Wheel Frame
- 7.Tray

Componenten

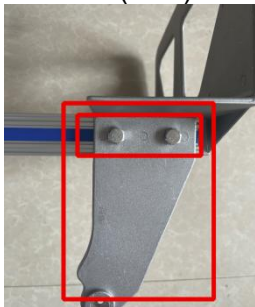
		
A. Frame (x1)	B. Wielframe (x2)	C. Wielsets (x2)
		
D. Lade (x1)	E. Versterking (x2)	F. As (x1)
		
G. Handvat 1 (x1)	H. Handvat 2 (x1)	I. Sierstrip (x1)
		
J. Ring (x2)	K. Splitpen (x4)	L. Buitenzeskantbout (x4)
		
N. Borgmoer (x8)	M. Kruiskopbout (x4)	O. Installatiehulpmiddelen (x3)

Montage en gebruik

1. Plaats de versterking (E) in het frame (A) (onder het gat) en plaats vervolgens de lade (D).



2. Plaats het wielframe (B) aan de buitenkant van het frame zoals weergegeven in de afbeelding, lijn het uit met het gat en bevestig het ten slotte met de buitenste zeskantbout (L+N).



3. Plaats de as (F) in het wielframe, plaats de splitpen (K) in het wielframe en buig deze, en plaats de pakking (J) aan de buitenkant.



4. Monteer het wielstel (C), plaats de splitpen (K) en buig deze.



5. Plaats achtereenvolgens handgreep 2 (H), handgreep 1 (G) en sierlijst

(I), lijn ze uit met de gaten en bevestig ze met kruiskopbouten (M+N).



Probleemoplossingsinstructie

Probleem	Redenen	Oplossing
Het wiel rolt niet soepel .	Onvoldoende Smering .	Voeg olie toe om de draaiende delen te smeren .
Klittenband is niet plakkerig .	Het klittenband heeft allerlei spullen .	Verwijder het haar, de draad en andere losse onderdelen van het klittenband .

Onderhoud

1. Vermijd langdurige blootstelling aan de zon om veroudering te voorkomen.
2. Zorg ervoor dat kinderen niet met de trapklimkar spelen.

Geïmporteerd naar de VS: Sanven Technology Ltd., Suite 250, 9166 Anaheim Place, Rancho Cucamonga, CA 91730

VEVOR[®]

TOUGH TOOLS, HALF PRICE

Technisch Ondersteuning en E-garantiecertificaat
www.vevor.com/support

VEVOR[®]

TOUGH TOOLS, HALF PRICE

**TRAPPKLÄTTERVAGN
2125B
ANVÄNDARMANUAL**

We continue to be committed to provide you tools with competitive price. "Save Half", "Half Price" or any other similar expressions used by us only represents an estimate of savings you might benefit from buying certain tools with us compared to the major top brands and does not necessarily mean to cover all categories of tools offered by us. You are kindly reminded to verify carefully when you are placing an order with us if you are actually saving half in comparison with the top major brands.

VEVOR®

TOUGH TOOLS, HALF PRICE

STAIR CLIMBING CART



NEED HELP? CONTACT US!

Have product questions? Need technical support? Please feel free to contact us:

Technical Support and E-Warranty Certificate

www.vevor.com/support

This is the original instruction, please read all manual instructions carefully before operating. VEVOR reserves a clear interpretation of our user manual. The appearance of the product shall be subject to the product you received. Please forgive us that we won't inform you again if there are any technology or software updates on our product.

Säkerhetsinstruktioner

WARNING:

8. Placera den inte nära brandfarliga material.
2. Det är förbjudet att bära människor under alla förhållanden.
3. Var uppmärksam på säkerheten när du går upp och ner för trappor.
4. Överbelastning är strängt förbjuden.
5. Rör dig inte för snabbt när du passerar gropar.

Modell och parametrar

Modell	2125B
Maximal belastning (F lat G rund)	250 kg
Maximal belastning (C lem trappor)	150 kg
Övergripande dimensioner	152,8*45,8*52,3cm

S strukturdiagram



- 1.Handle 1
- 2.Handle 2
- 3.Frame
- 4.Trim Strip
- 5.Climbing Wheel
- 6.Wheel Frame
- 7.Tray

Komponenter

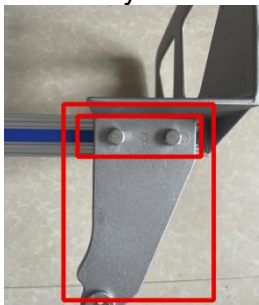
A long, silver-colored metal frame with three vertical supports.	Two grey metal wheel brackets with mounting holes.	Two blue plastic wheel assemblies with three wheels each.
A. Frame(x1)	B. Hjulram (x2)	C. Hjuluppsättningar (x2)
A grey metal bracket with two cutouts.	Two long, silver-colored metal reinforcement bars with holes.	A long, thin metal axle.
D. Fack(x1)	E. Förstärkning(x2)	F. Axel(x1)
A long metal handle with a black grip.	A shorter metal handle with a black grip.	A U-shaped metal trim strip.
G. Handtag 1 (x1)	H. Handtag 2 (x1)	I. Trimremsa (x1)
Two grey metal washers.	Four silver-colored cotter pins.	Four silver-colored hex bolts.
J. Washer(x2)	K. Cotter Pin (x4)	L. Yttre sexkantsbult (x4)
Eight silver-colored jam nuts.	Four silver-colored crosshead bolts.	Three blue plastic installation tools: two wrenches and one hex key.
N. Jamnöt (x8)	M. Crosshead Bolt(x4)	O. Installationsverktyg(x3)

Montering och användning

1. Placera förstärkningen (E) inuti ramen (A) (under hålet) och sätt sedan in brickan (D).



2. Placera hjulramen (B) på utsidan av ramen enligt bilden, rikta in den mot hålet och fixera den till sist med den yttre sexkantsbulten (L+N).



3. Sätt in axeln (F) i hjulramen, sätt in saxspinnen (K) inuti hjulramen och böj den, och sätt packningen (J) utanför.



4. Montera hjulsatsen (C), sätt i saxsprinten (K) och böj den.



5. Sätt i handtag 2 (H), handtag 1 (G) och trimlisten (I) i tur och ordning,

rikta in dem med hålen och fixera dem med tvärhuvudsbulvar (M+N).



Felsökningsinstruktion

Problem	Skäl	Lösning
Hjulrullningen är inte jämn .	Otillräcklig smörjning .	Tillsätt olja för att smörja de roterande delarna .
Kardborre är inte klibbig .	Kardborrbandet har diverse .	Rengör håret, tråden och annat på kardborrbandet .

Underhåll

1. Undvik långvarig exponering för solen för att undvika åldrande.
2. Undvik att barn tar trappklättrervagnen för att leka.

Importerad till USA: Sanven Technology Ltd., Suite 250, 9166 Anaheim Place, Rancho Cucamonga, CA 91730

VEVOR[®]

TOUGH TOOLS, HALF PRICE

Teknisk Support och e-garanticertifikat
www.vevor.com/support