

VEVOR[®]

TOUGH TOOLS, HALF PRICE

Technical Support and E-Warranty Certificate

www.vevor.com/support

FISHING CART

MODEL: YK-500

We continue to be committed to provide you tools with competitive price.

"Save Half", "Half Price" or any other similar expressions used by us only represents an estimate of savings you might benefit from buying certain tools with us compared to the major top brands and does not necessarily mean to cover all categories of tools offered by us. You are kindly reminded to verify carefully when you are placing an order with us if you are actually saving half in comparison with the top major brands.

VEVOR[®]

TOUGH TOOLS, HALF PRICE

FISHING CART

MODEL: YK-500



NEED HELP? CONTACT US!

Have product questions? Need technical support? Please feel free to contact us:

Technical Support and E-Warranty Certificate
www.vevor.com/support

This is the original instruction, please read all manual instructions carefully before operating. VEVOR reserves a clear interpretation of our user manual. The appearance of the product shall be subject to the product you received. Please forgive us that we won't inform you again if there are any technology or software updates on our product.

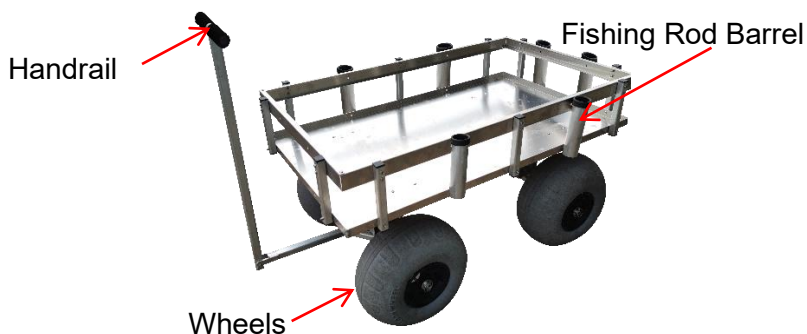
SAFETY INSTRUCTIONS

1. Please check and confirm that the cart is intact and the tire pressure is normal before each use. Please inflate a little before using the wheels, and be careful not to over-inflate!
2. It is forbidden to carry people at any condition.
3. It is forbidden to load articles on uneven and hilly terrains.
4. Overload is strictly prohibited.
5. Don't move too fast when passing potholes areas.

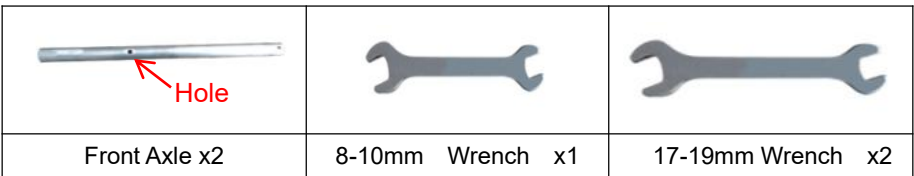
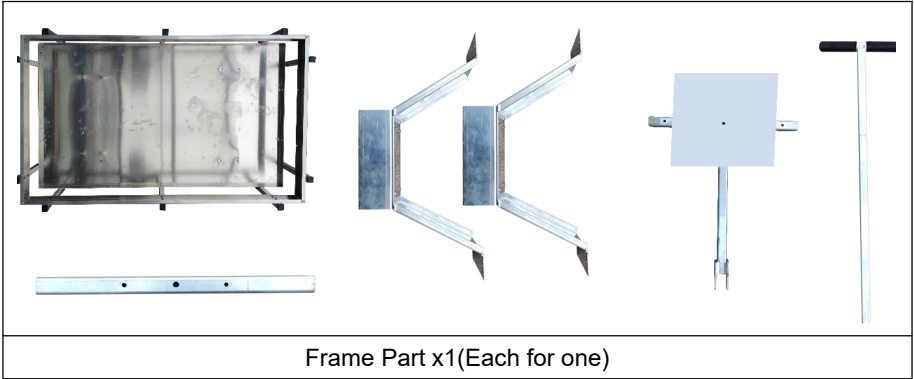
MODEL AND PARAMETERS







Model	YK-500
Max. Load	500lbs
Wheels	13inch(After Inflated size), inflatable, PU wheels*4
Fishing Rod Barrel	6
Frame Size (inside)	45.9 x 27 x 7.9inch
Material	Aluminium alloy
Color	Silver

STRUCTURE DIAGRAM

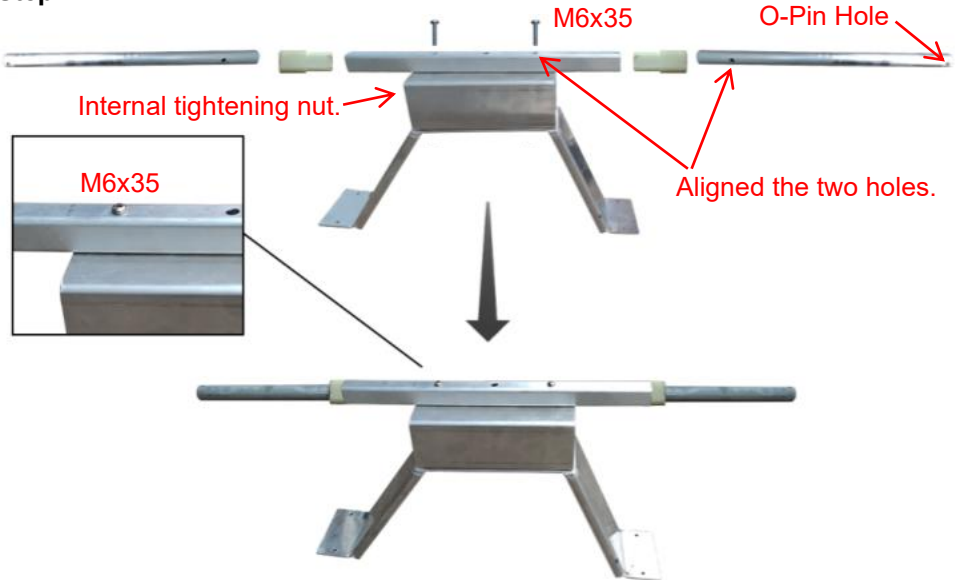


INSTALLATION

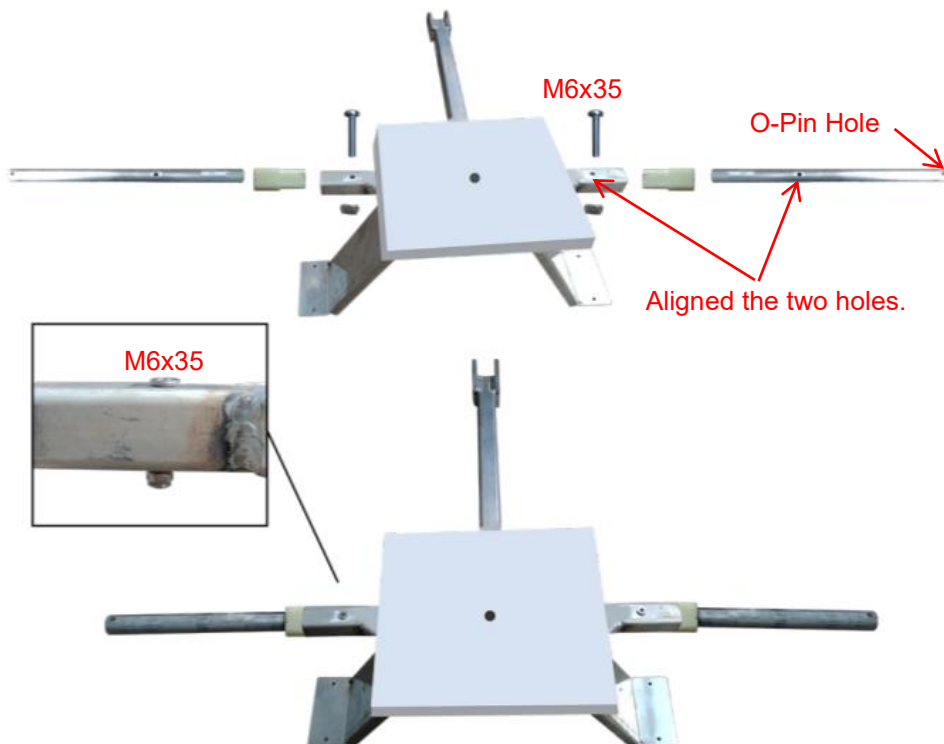
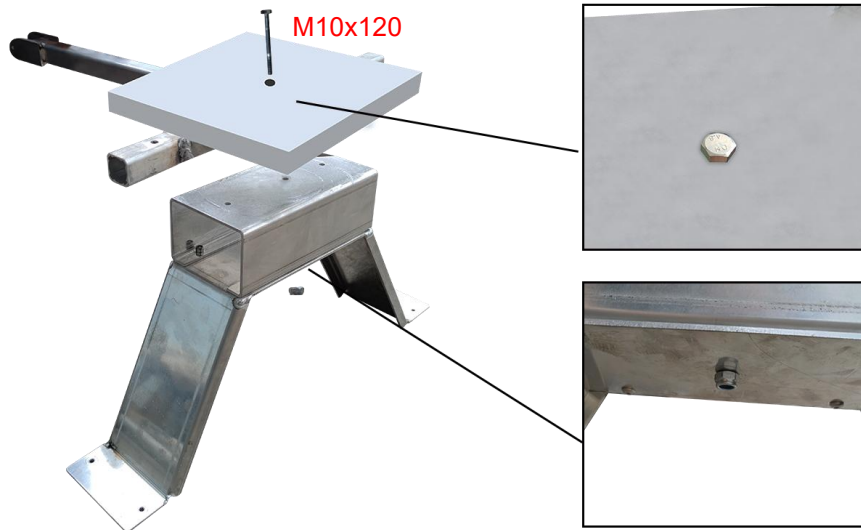


		
M6x50 Bolts x2 (Need one, one more)	M6x50 Bolt x7 (Need Six, one more)	User Manual x1
		
M10x120 Bolt x1	Hand Pump x1	Wheel jig cardboard x1

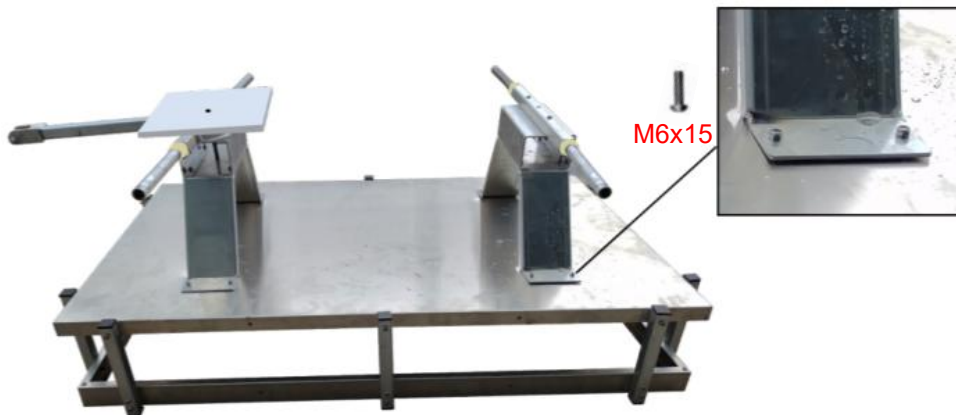
Step 1: Installation of the rear wheel bracket.



Step 2: Installation of the front wheel bracket.



Step 3: Turn the frame upside down and attach the wheel kits.



Step 4: Install the wheels and the handle pieces.

NOTE: Please inflate the wheels before installation.



Take out the wheel and cardboard jig.



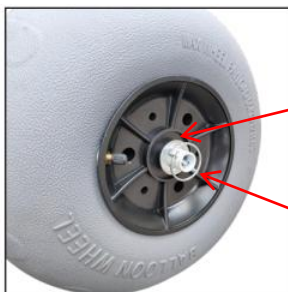
Put the cardboard jig on the inflatable wheel.



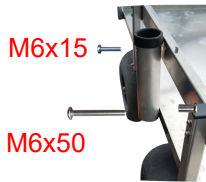
When the wheel be inflating, the diameter should not exceed 330mm.



Be finished.



Step 5: Fix the handrail.



Step 6: Installation complete.

MAINTENANCE

1. Clean the surface after each use .
2. Please check and confirm that the cart is intact and the tire pressure is normal before each use.
3. Check that the bolts are tight.

Address: Baoshanqu Shuangchenglu 803long 11hao 1602A-1609shi
Shanghai

Imported to AUS: SIHAO PTY LTD, 1 ROKEVA STREETEASTWOOD
NSW 2122 Australia

Imported to USA: Sanven Technology Ltd, Suite 250, 9166 Anaheim
Place, Rancho Cucamonga, CA 91730



SHUNSHUN GmbH
Römeräcker 9 Z2021, 76351
Linkenheim-Hochstetten, Germany



Pooledas Group Ltd
Unit 5 Albert Edward House, The
Pavilions Preston, United Kingdom

Made In China

VEVOR[®]

TOUGH TOOLS, HALF PRICE

Technical Support and E-Warranty Certificate

www.vevor.com/support

VEVOR[®]

TOUGH TOOLS, HALF PRICE

Assistance technique et certificat de garantie électronique

www.vevor.com/support

CHARIOT DE PÊCHE

MODÈLE : YK-500

We continue to be committed to provide you tools with competitive price.

"Save Half", "Half Price" or any other similar expressions used by us only represents an estimate of savings you might benefit from buying certain tools with us compared to the major top brands and does not necessarily mean to cover all categories of tools offered by us. You are kindly reminded to verify carefully when you are placing an order with us if you are actually saving half in comparison with the top major brands.

VEVOR®

TOUGH TOOLS, HALF PRICE

FISHING CART

MODÈLE : YK-500



NEED HELP? CONTACT US!

Have product questions? Need technical support? Please feel free to contact us:

Technical Support and E-Warranty Certificate
www.vevor.com/support

This is the original instruction, please read all manual instructions carefully before operating. VEVOR reserves a clear interpretation of our user manual. The appearance of the product shall be subject to the product you received. Please forgive us that we won't inform you again if there are any technology or software updates on our product.

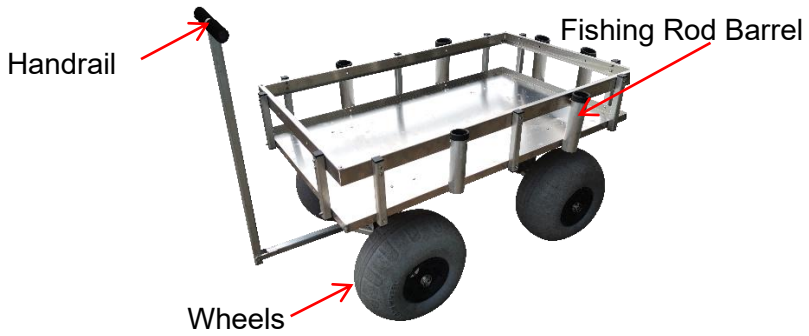
SAFETY INSTRUCTIONS

1. Veuillez vérifier et confirmer que le chariot est intact et que la pression des pneus est correcte.
normal avant chaque utilisation. Veuillez gonfler un peu avant d'utiliser les roues, et veillez à ne pas trop gonfler !
2. Il est interdit de transporter des personnes dans quelque condition que ce soit.
3. Il est interdit de charger des articles sur des terrains irréguliers et vallonnés.
4. La surcharge est strictement interdite.
5. Ne vous déplacez pas trop vite lorsque vous passez des zones de nids-de-poule.

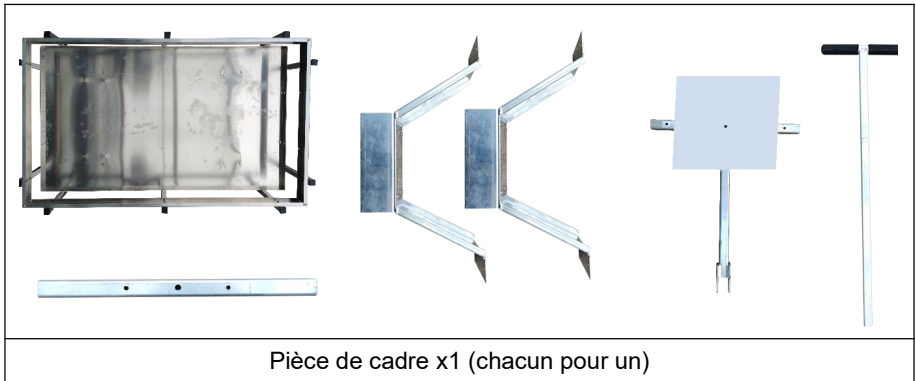
MODEL AND PARAMETERS

Modèle	YK-500
Max. Charger	500 livres
roues	13 pouces (taille après gonflé) , gonflable, Roues
Baril de canne à	6
du cadre (intérieur)	45,9 x 27 x 7,9 pouces
Matériel	Alliage d'aluminium
Couleur	Argent

STRUCTURE DIAGRAM






INSTALLATION









<p>Baril de canne à pêche x 6</p>	<p>roues x 4</p>	<p>Rondelle x 4</p>

<p>Essieu arrière x 2</p>	<p>O- pin x 4</p>	<p>Entretoise d'essieu x4</p>

		
Essieu avant x 2	8-10 mm de largeur x1 _	17-19 mm de largeur x2 _

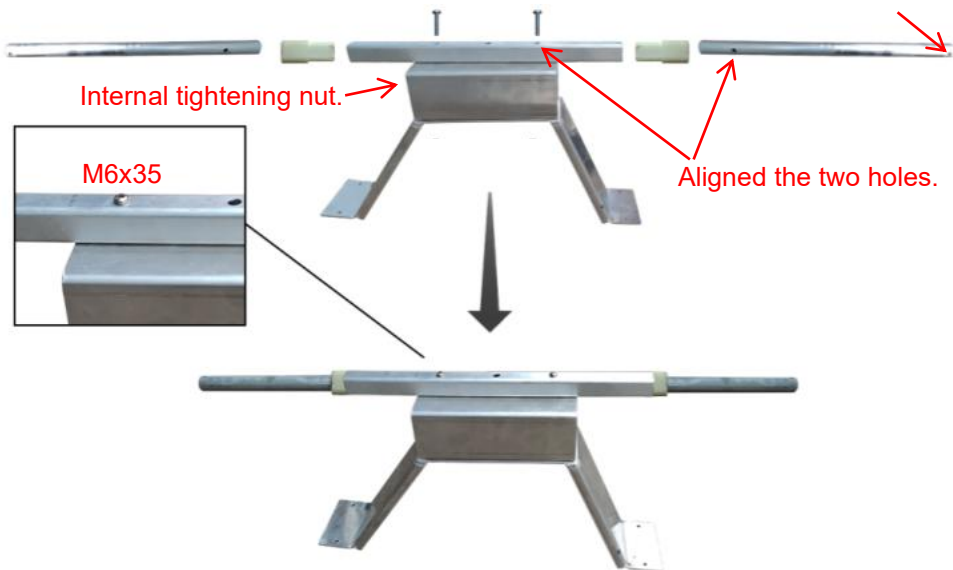
		
Clé hexagonale de 4 mm x 2	Boulons M6x15 x15 (Besoin de quatorze, un de plus)	Boulons M6x35 x5 (Il en faut quatre, un de plus)

		
Boulons M 6x50 x 2 (J'en ai besoin d'un, un de plus)	M 6x50 Boulon x 7 (Besoin de six, un de plus)	Manuel d'utilisation x1
		
Boulon M10x120 x1	Pompe à main x1	Carton de gabarit de roue x 1

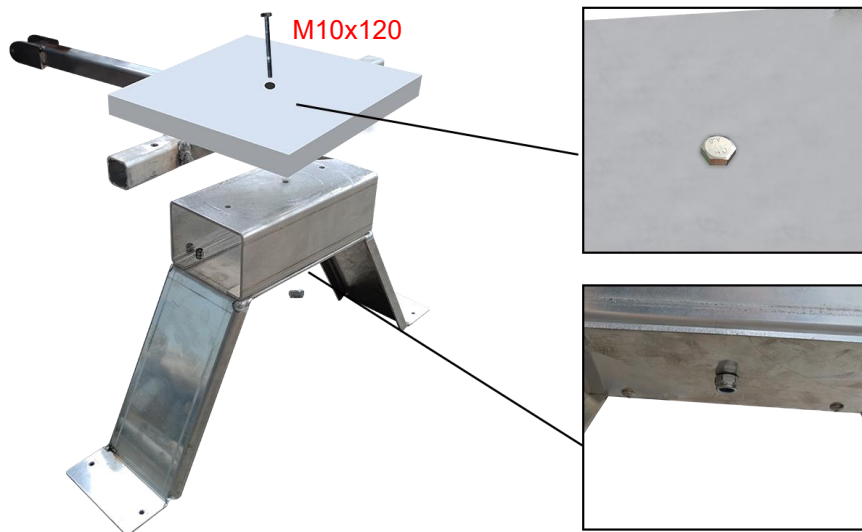
Étape 1: Installation du support de roue arrière.

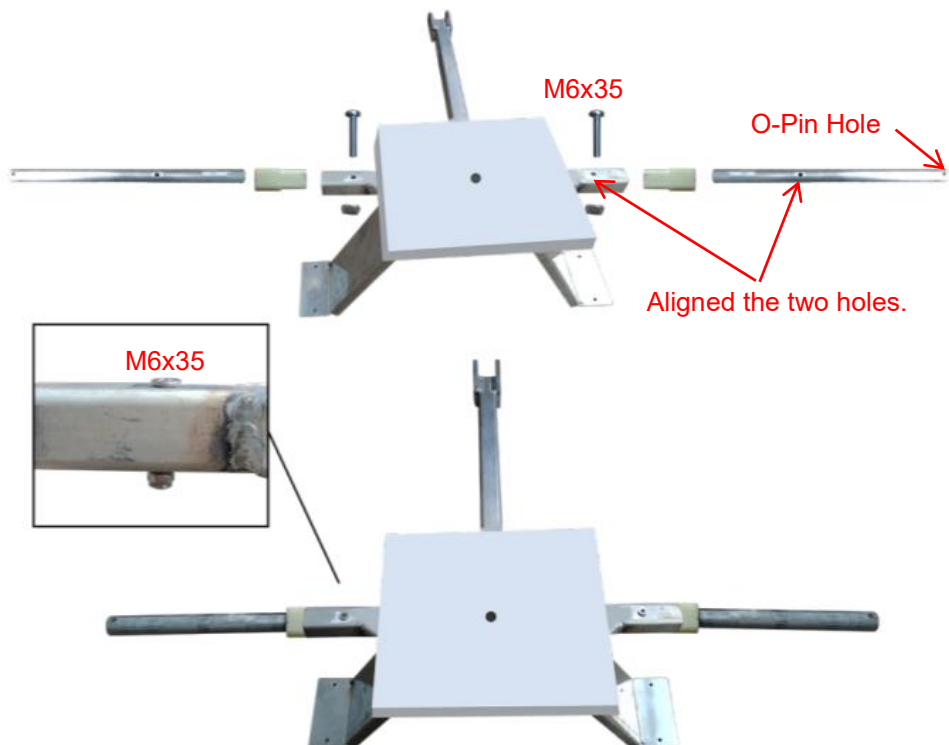
M6x35

O-Pin Hole

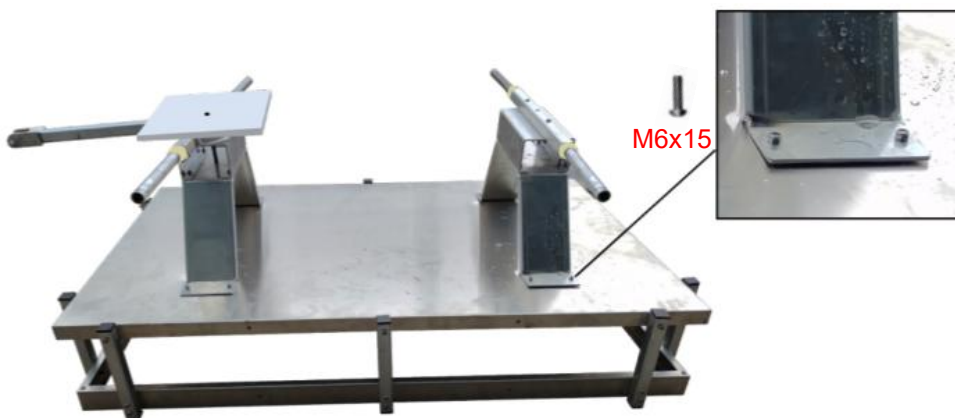


Étape 2: Installation du support de roue avant.





Étape 3: Retournez le cadre et fixez les kits de roues .



Étape 4: Installez les roues et les pièces de poignée .

REMARQUE : veuillez gonfler les roues avant l'installation.



Take out the wheel
and cardboard jig.



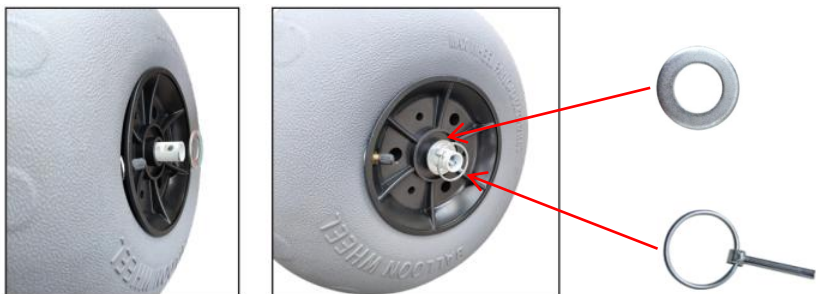
Put the cardboard jig on
the inflatable wheel.



When the wheel be
inflating, the diameter
should not exceed 330mm.



Be finished.



Étape 5 : Réparez la main courante.



Étape 6 : Installation terminée.

MAINTENANCE

4. Nettoyez la surface après chaque utilisation.
5. Veuillez vérifier et confirmer que le chariot est intact et que la pression des pneus est correcte.
normal avant chaque utilisation.
6. Vérifiez que les boulons sont serrés .

Adresse : Baoshanqu Shuangchenglu 803long 11hao 1602A-1609shi
Shanghai

Importé en Australie : SIHAO PTY LTD, 1 ROKEVA STREETASTWOOD
NSW 2122 Australie

Importé aux États-Unis : Sanven Technology Ltd, Suite 250, 9166
Anaheim Place, Rancho Cucamonga, CA 91730

EC	REP
-----------	------------

SHUNSHUN GmbH
Römeräcker 9 Z2021, 76351
Linkenheim-Hochstetten, Germany

UK	REP
-----------	------------

Pooledas Group Ltd
Unit 5 Albert Edward House, The
Pavilions Preston, United Kingdom

Fabriqué en Chine

VEVOR[®]

TOUGH TOOLS, HALF PRICE

Technique Assistance et certificat de garantie électronique

www.vevor.com/support

VEVOR[®]

TOUGH TOOLS, HALF PRICE

Zertifikat für technischen Support und E-Garantie

www.vevor.com/support

ANGELWAGEN

MODELL: YK-500

We continue to be committed to provide you tools with competitive price.

"Save Half", "Half Price" or any other similar expressions used by us only represents an estimate of savings you might benefit from buying certain tools with us compared to the major top brands and does not necessarily mean to cover all categories of tools offered by us. You are kindly reminded to verify carefully when you are placing an order with us if you are actually saving half in comparison with the top major brands.

VEVOR®

TOUGH TOOLS, HALF PRICE

FISHING CART

MODELL: YK-500



NEED HELP? CONTACT US!

Have product questions? Need technical support? Please feel free to contact us:

Technical Support and E-Warranty Certificate
www.vevor.com/support

This is the original instruction, please read all manual instructions carefully before operating. VEVOR reserves a clear interpretation of our user manual. The appearance of the product shall be subject to the product you received. Please forgive us that we won't inform you again if there are any technology or software updates on our product.

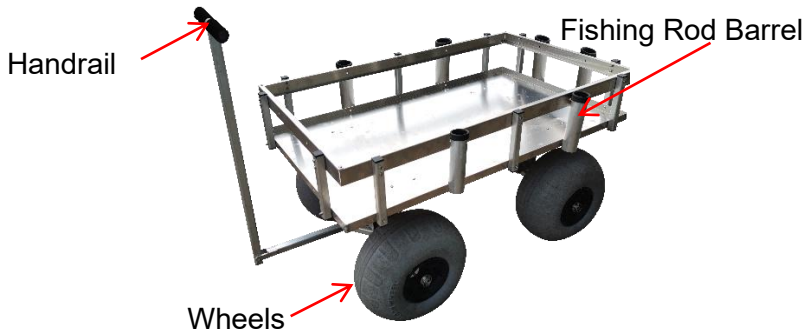
SAFETY INSTRUCTIONS

1. Bitte überprüfen und bestätigen Sie, dass der Wagen intakt ist und der Reifendruck stimmt normal vor jedem Gebrauch. Bitte pumpen Sie die Räder ein wenig auf, bevor Sie sie verwenden, und achten Sie darauf, nicht zu viel aufzupumpen!
2. Es ist unter allen Bedingungen verboten, Personen zu befördern.
3. Das Verladen von Gegenständen auf unebenem und hügeligem Gelände ist verboten.
4. Überlastung ist strengstens untersagt.
5. Fahren Sie nicht zu schnell, wenn Sie an Schlaglochstellen vorbeifahren.

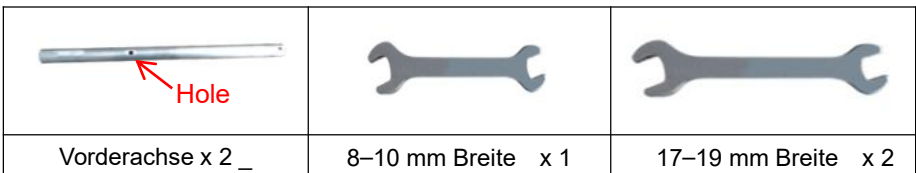
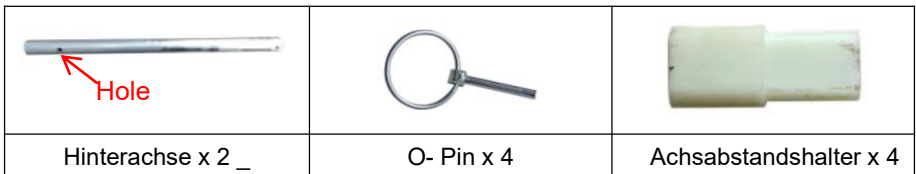
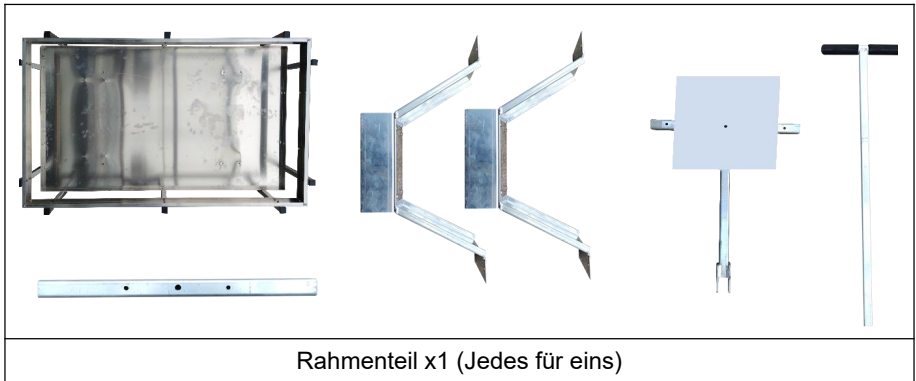
MODEL AND PARAMETERS

Modell	YK-500
Max. Belastung	500 Pfund
Räder	13 Zoll (nach aufgeblasener Größe) , aufblasbar,
Angelrutenfass	6
Rahmengröße	45,9 x 27 x 7,9 Zoll
Material	Aluminiumlegierung
Farbe	Silber







STRUCTURE DIAGRAM



INSTALLATION



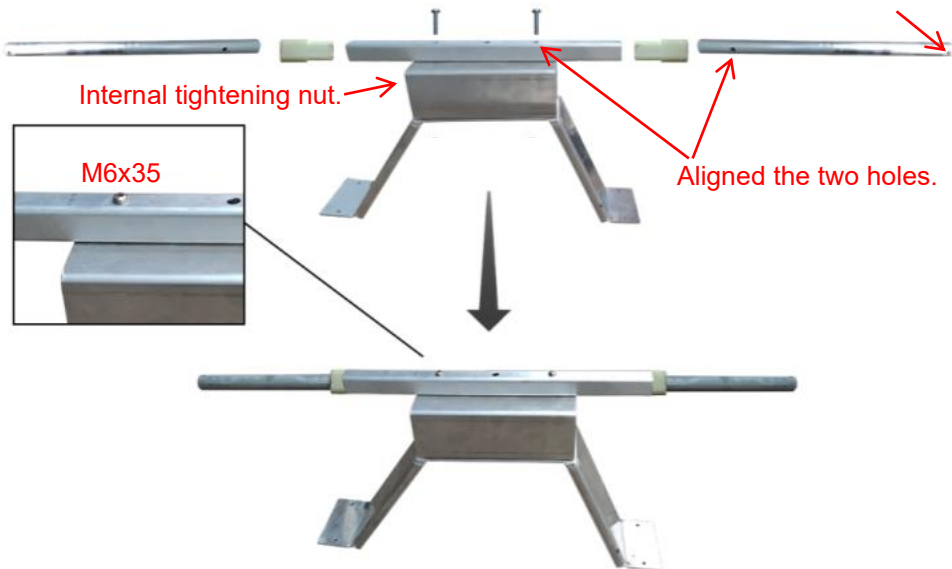
		
4-mm- Inbusschlüssel x 2	M6x15 Schrauben x15 (Brauche vierzehn, noch eins)	M6x35 Schrauben x5 (Brauchen Sie vier, noch einen)

		
M 6x5 0 Schrauben x 2 (Brauche noch eins, noch eins)	M 6x5 0 Bolzen x 7 (Ich brauche sechs, noch einen)	Benutzerhandbuch x1
		
M10x120 Bolzen x1	Handpumpe x1	Radlehre aus Pappe x 1

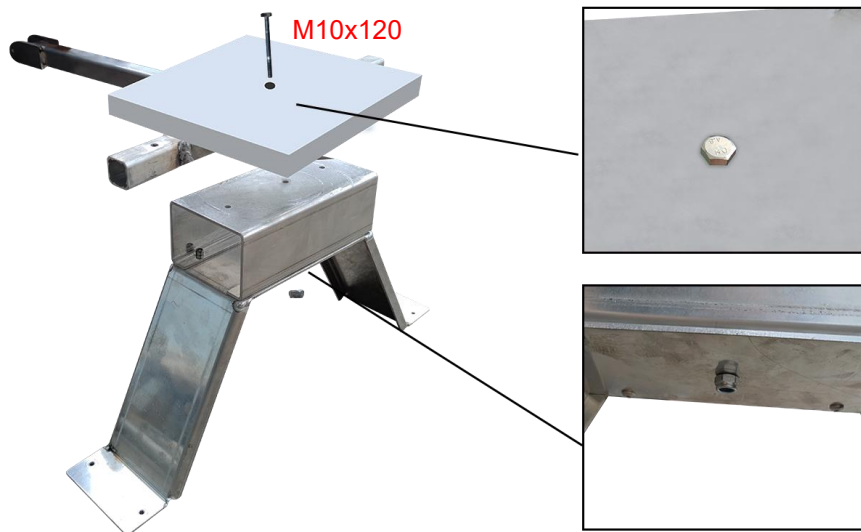
Schritt 1: Montage der Hinterradhalterung.

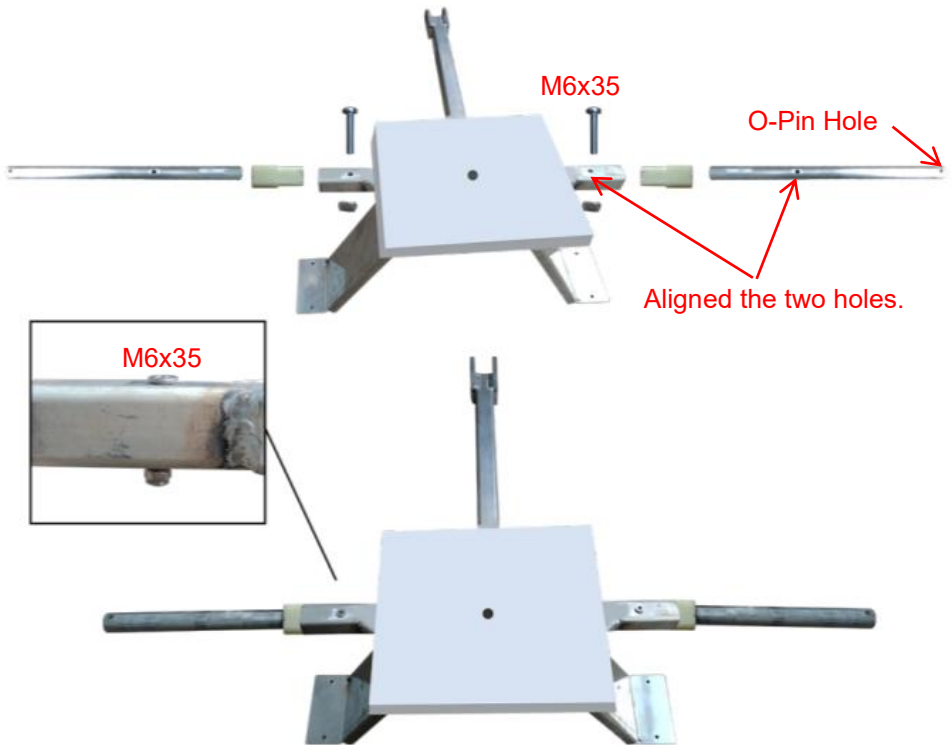
M6x35

O-Pin Hole



Schritt 2: Montage der Vorderradhalterung.





Schritt 3: Drehen Sie den Rahmen um und befestigen Sie die Radsätze .



Schritt 4: Montieren Sie die Räder und die Griffteile .

HINWEIS: Bitte pumpen Sie die Räder vor der Montage auf.



Take out the wheel
and cardboard jig.



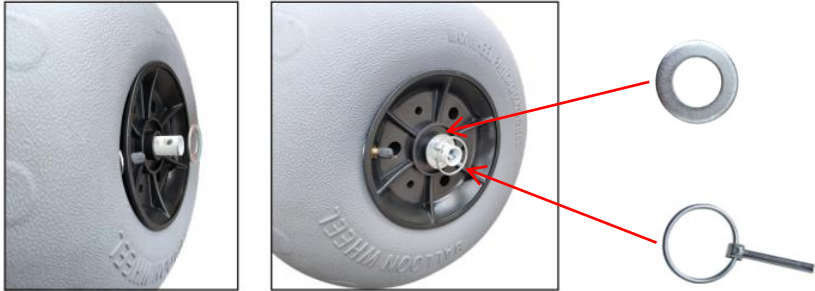
Put the cardboard jig on
the inflatable wheel.



When the wheel be
inflating, the diameter
should not exceed 330mm.



Be finished.



Schritt 5: Befestigen Sie den Handlauf.



Schritt 6: Installation abgeschlossen.

MAINTENANCE

7. Reinigen Sie die Oberfläche nach jedem Gebrauch.
8. Bitte überprüfen und bestätigen Sie, dass der Wagen intakt ist und der Reifendruck stimmt
normal vor jedem Gebrauch.
9. Überprüfen Sie, ob die Schrauben fest sitzen .

Adresse: Baoshanqu Shuangchenglu 803long 11hao 1602A-1609shi
Shanghai

Importiert nach AUS: SIHAO PTY LTD, 1 ROKEVA STREETEASTWOOD
NSW 2122 Australien

In die USA importiert: Sanven Technology Ltd, Suite 250, 9166 Anaheim
Place, Rancho Cucamonga, CA 91730

EC	REP
-----------	------------

SHUNSHUN GmbH
Römeräcker 9 Z2021, 76351
Linkenheim-Hochstetten, Germany

UK	REP
-----------	------------

Pooledas Group Ltd
Unit 5 Albert Edward House, The
Pavilions Preston, United Kingdom

In China hergestellt

VEVOR[®]

TOUGH TOOLS, HALF PRICE

Technisch Support- und E-Garantiezertifikat

www.vevor.com/support

VEVOR[®]

TOUGH TOOLS, HALF PRICE

Supporto tecnico e certificato di garanzia elettronica

www.vevor.com/support

CARRELLO DA PESCA

MODELLO: YK-500

We continue to be committed to provide you tools with competitive price.

"Save Half", "Half Price" or any other similar expressions used by us only represents an estimate of savings you might benefit from buying certain tools with us compared to the major top brands and does not necessarily mean to cover all categories of tools offered by us. You are kindly reminded to verify carefully when you are placing an order with us if you are actually saving half in comparison with the top major brands.

VEVOR[®]

TOUGH TOOLS, HALF PRICE

FISHING CART

MODELLO: YK-500



NEED HELP? CONTACT US!

Have product questions? Need technical support? Please feel free to contact us:

Technical Support and E-Warranty Certificate
www.vevor.com/support

This is the original instruction, please read all manual instructions carefully before operating. VEVOR reserves a clear interpretation of our user manual. The appearance of the product shall be subject to the product you received. Please forgive us that we won't inform you again if there are any technology or software updates on our product.

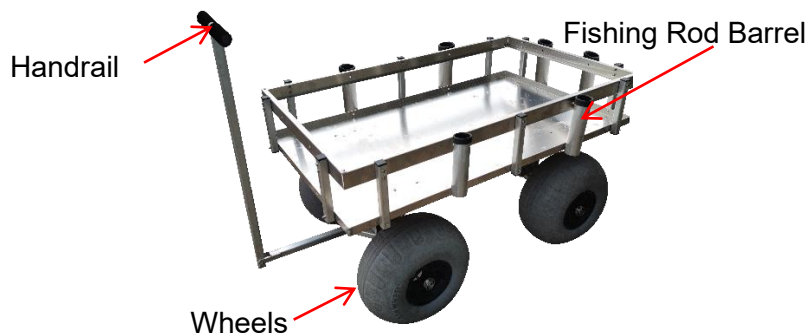
SAFETY INSTRUCTIONS

1. Controllare e confermare che il carrello sia integro e che la pressione dei pneumatici lo sia normale prima di ogni utilizzo. Si prega di gonfiare un po' prima di utilizzare le ruote e fare attenzione a non gonfiare eccessivamente!
2. È vietato trasportare persone in qualsiasi condizione.
3. È vietato caricare articoli su terreni sconnessi e collinari.
4. Il sovraccarico è severamente vietato.
5. Non muoverti troppo velocemente quando attraversi aree con buche.

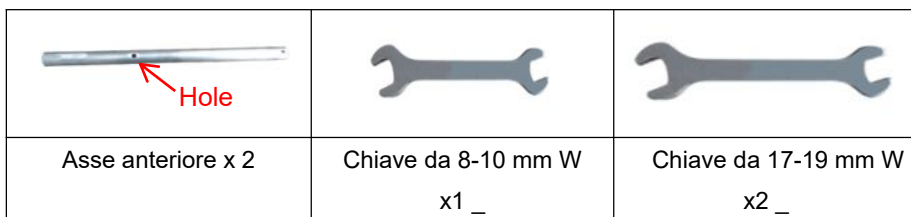
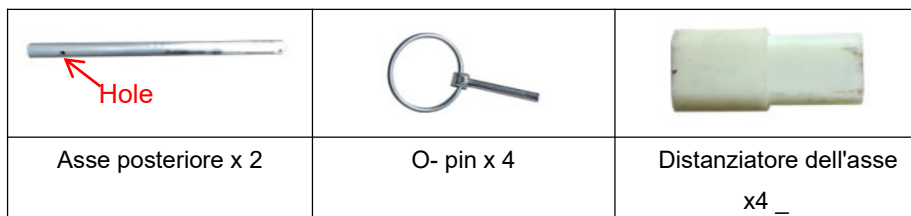
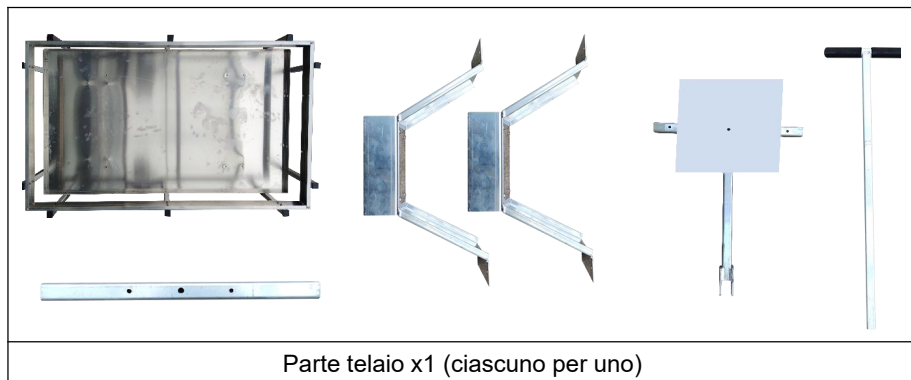
MODEL AND PARAMETERS

Modello	YK-500
Massimo. Carico	500 libbre
Ruote	13 pollici (dopo la dimensione gonfiata) ,
Canna da pesca	6
Dimensioni cornice	45,9 x 27 x 7,9 pollici
Materiale	Lega di alluminio
Colore	Argento







STRUCTURE DIAGRAM



INSTALLATION



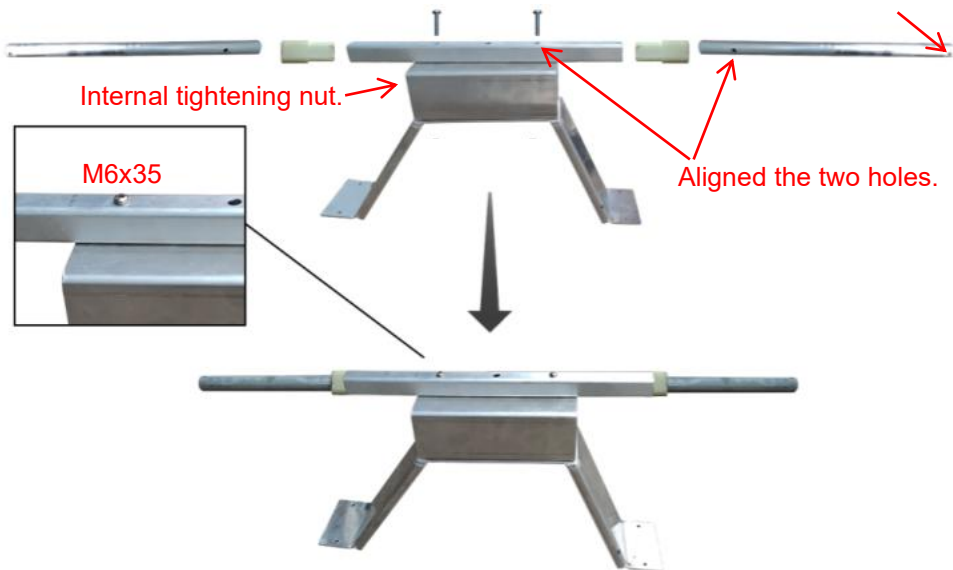
Chiave esagonale da 4 mm x 2	Bulloni M6x15x15 (Ne servono quattordici, uno in più)	Bulloni M6x35x5 (Ne servono quattro, uno in più)
------------------------------	--	---

		
Bulloni M 6x5 0 x 2 (Ne serve uno, uno in più)	Bullone M 6x5 0 x 7 (Ne servono sei, uno in più)	Manuale utente x1
		
Bullone M10x120x1	Pompa a mano x1	Cartone per maschera per ruote x 1

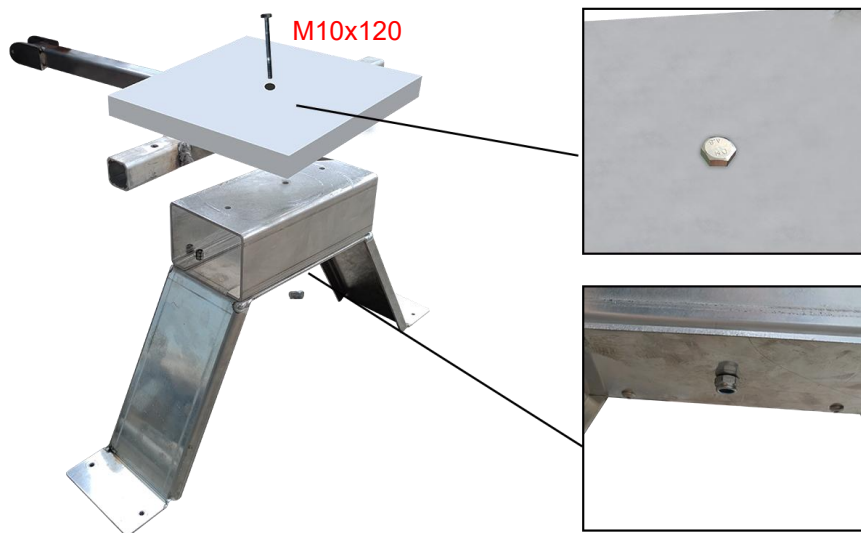
Passo 1: Installazione della staffa della ruota posteriore.

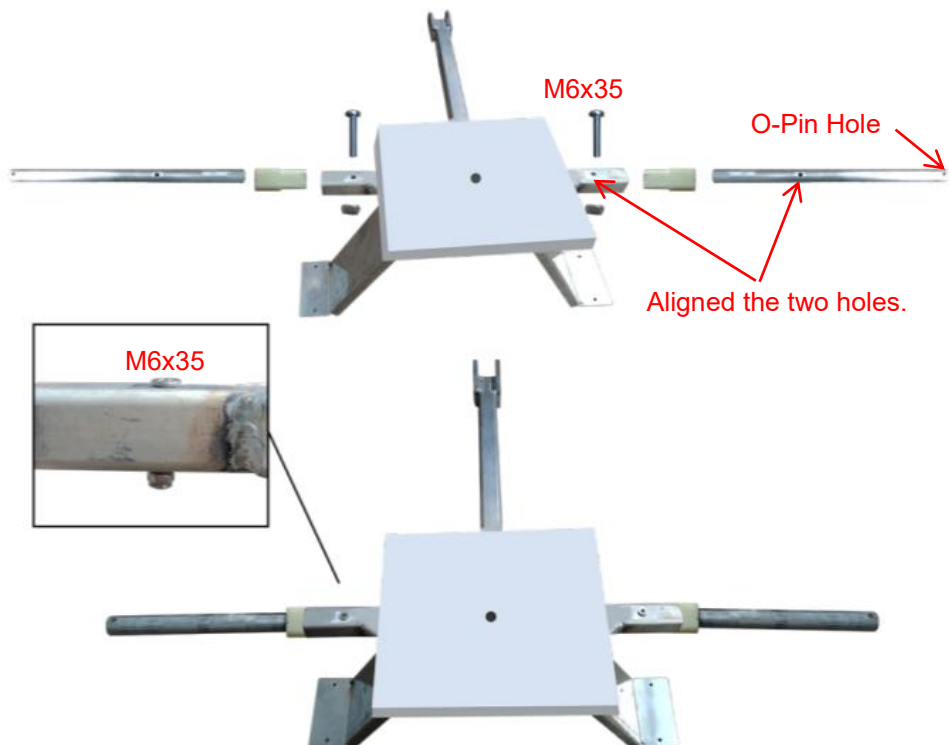
M6x35

O-Pin Hole

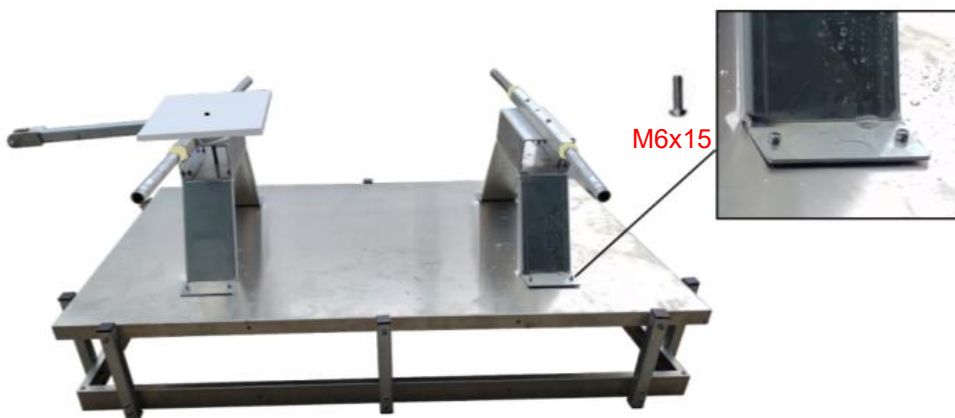


Passo 2: Installazione della staffa della ruota anteriore.





Passaggio 3: Capovolgere il telaio e montare il kit ruote .



Passaggio 4: Installare le ruote e i pezzi della maniglia .

NOTA: gonfiare le ruote prima dell'installazione.



Take out the wheel
and cardboard jig.



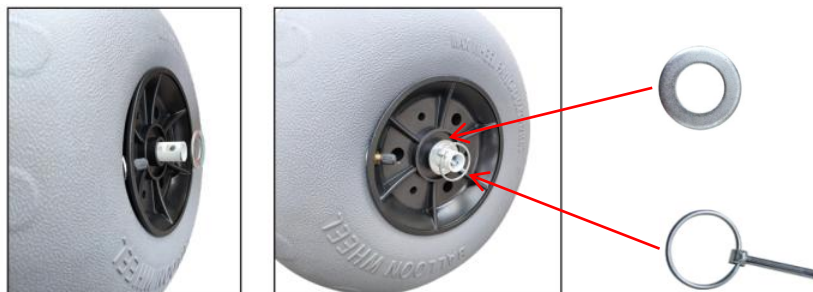
Put the cardboard jig on
the inflatable wheel.



When the wheel be
inflating, the diameter
should not exceed 330mm.



Be finished.



Passaggio 5: Fissare il corrimano.



Passaggio 6: installazione completata.

MAINTENANCE

10. Pulire la superficie dopo ogni utilizzo.
11. Si prega di controllare e confermare che il carrello sia integro e che la pressione dei pneumatici lo sia normale prima di ogni utilizzo.
12. Controllare che i bulloni siano serrati .

Indirizzo: Baoshanqu Shuangchenglu 803long 11hao 1602A-1609shi
Shanghai

Importato in AUS: SIHAO PTY LTD, 1 ROKEVA STREETEASTWOOD
NSW 2122 Australia

Importato negli Stati Uniti: Sanven Technology Ltd, Suite 250, 9166
Anaheim Place, Rancho Cucamonga, CA 91730

EC	REP
-----------	------------

SHUNSHUN GmbH
Römeräcker 9 Z2021, 76351
Linkenheim-Hochstetten, Germany

UK	REP
-----------	------------

Pooledas Group Ltd
Unit 5 Albert Edward House, The
Pavilions Preston, United Kingdom

Made in China

VEVOR[®]

TOUGH TOOLS, HALF PRICE

Tecnico Supporto e certificato di garanzia elettronica

www.vevor.com/support

VEVOR[®]

TOUGH TOOLS, HALF PRICE

Soporte técnico y certificado de garantía electrónica

www.vevor.com/support

CARRO DE PESCA

MODELO: YK-500

We continue to be committed to provide you tools with competitive price.

"Save Half", "Half Price" or any other similar expressions used by us only represents an estimate of savings you might benefit from buying certain tools with us compared to the major top brands and does not necessarily mean to cover all categories of tools offered by us. You are kindly reminded to verify carefully when you are placing an order with us if you are actually saving half in comparison with the top major brands.

VEVOR[®]

TOUGH TOOLS, HALF PRICE

FISHING CART

MODELO: YK-500



NEED HELP? CONTACT US!

Have product questions? Need technical support? Please feel free to contact us:

Technical Support and E-Warranty Certificate
www.vevor.com/support

This is the original instruction, please read all manual instructions carefully before operating. VEVOR reserves a clear interpretation of our user manual. The appearance of the product shall be subject to the product you received. Please forgive us that we won't inform you again if there are any technology or software updates on our product.

SAFETY INSTRUCTIONS

1. Verifique y confirme que el carrito esté intacto y que la presión de los neumáticos sea normal antes de cada uso. Infle un poco antes de usar las ruedas y tenga cuidado de no inflar demasiado.
2. Está prohibido transportar personas en cualquier condición.
3. Está prohibido cargar artículos en terrenos irregulares y montañosos.
4. La sobrecarga está estrictamente prohibida.
5. No se mueva demasiado rápido al pasar por zonas con baches.

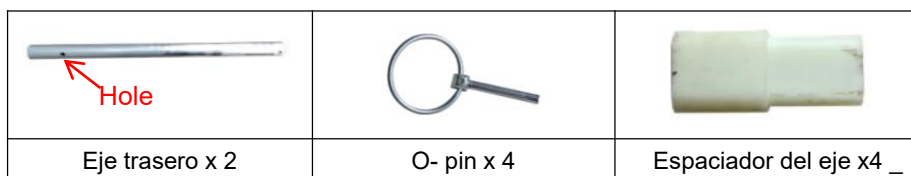
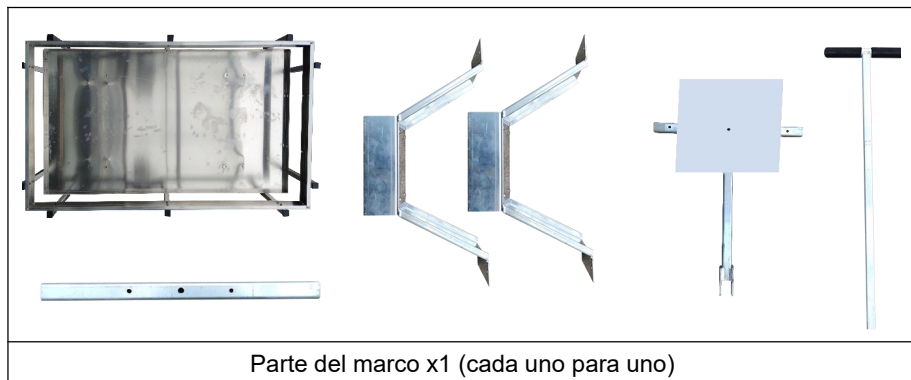
MODEL AND PARAMETERS

Modelo	YK-500
Máx. Carga	500 libras
Ruedas	13 pulgadas (después del tamaño inflado) ,
Barril de caña de	6
Tamaño del marco	45,9 x 27 x 7,9 pulgadas
Material	Aleación de aluminio
Color	Plata







STRUCTURE DIAGRAM



INSTALLATION



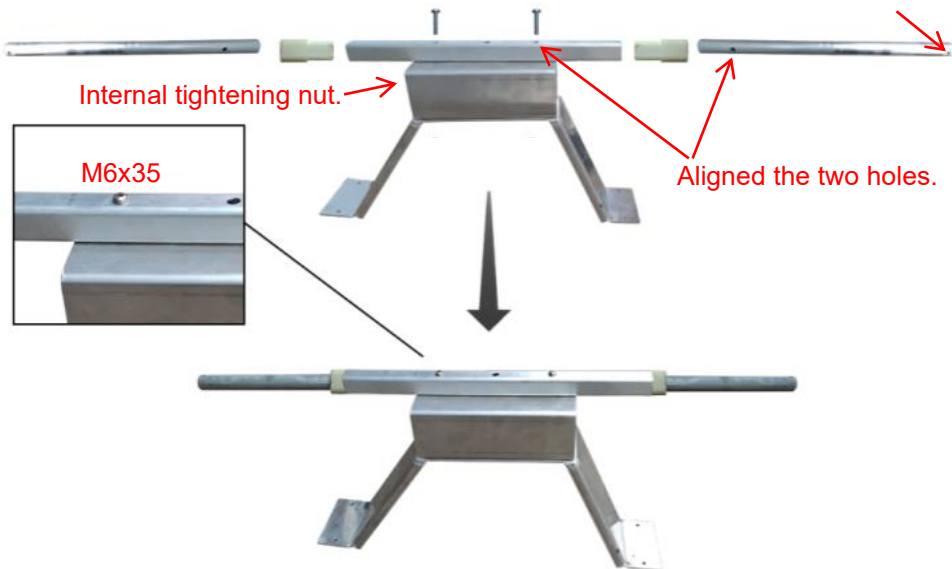
2 llaves hexagonales de 4 mm .	Pernos M6x15 x15 (Necesita catorce, uno más)	Pernos M6x35 x5 (Necesita cuatro, uno más)
--------------------------------	---	---

		
M 6x5 0 Pernos x 2 (Necesito uno, uno más)	M 6x5 0 Perno x 7 (Necesito seis, uno más)	Manual de usuario x1
		
Perno M10x120 x1	Bomba de mano x1	Cartón de plantilla de rueda x 1

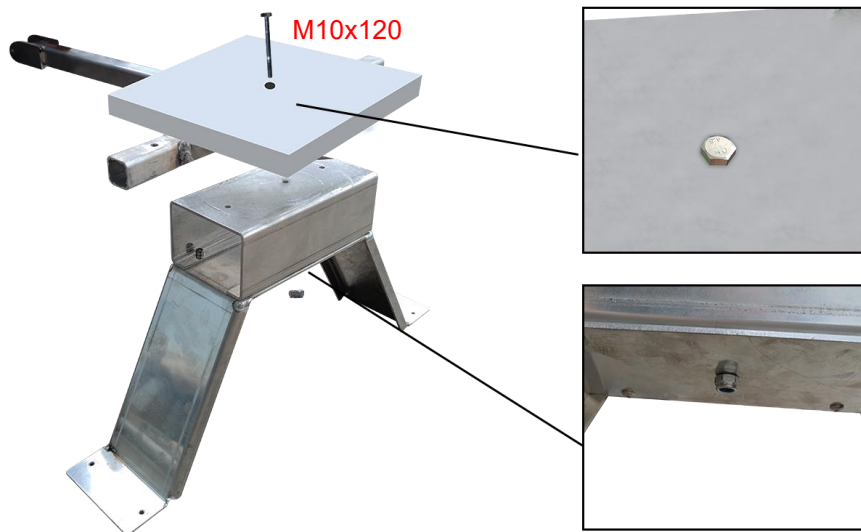
Paso 1: Instalación del soporte de la rueda trasera.

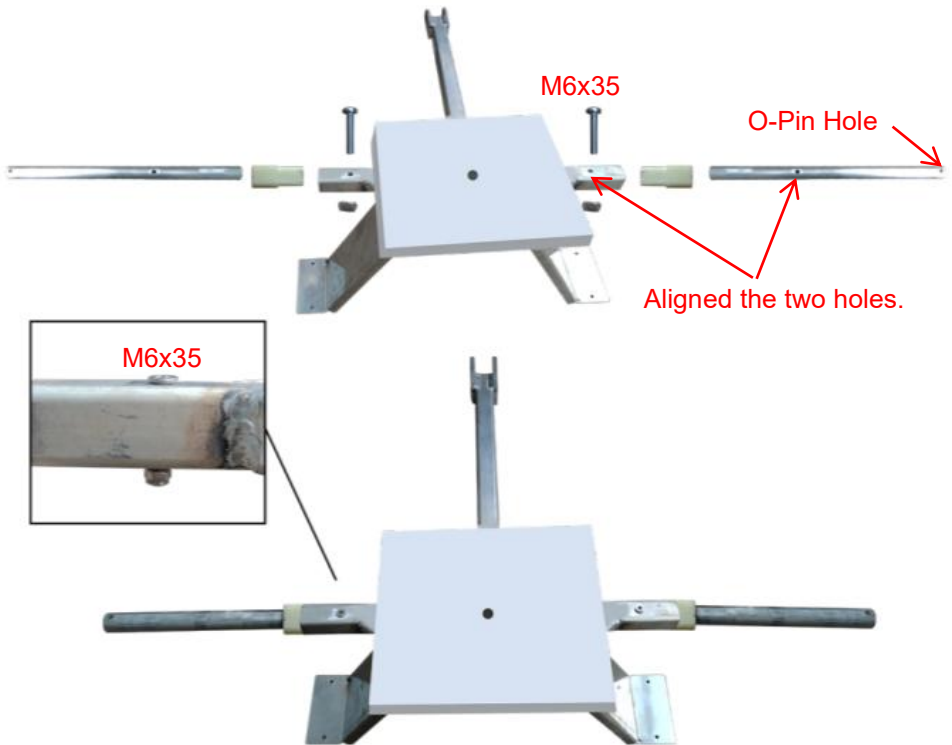
M6x35

O-Pin Hole



Paso 2: Instalación del soporte de la rueda delantera.





Paso 3: Voltee el marco y coloque los juegos de ruedas .



Etapa 4: Instale las ruedas y las piezas del mango .

NOTA: Infla las ruedas antes de la instalación.



1

Take out the wheel
and cardboard jig.



2

Put the cardboard jig on
the inflatable wheel.



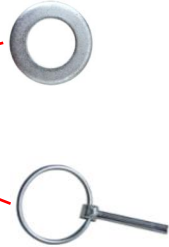
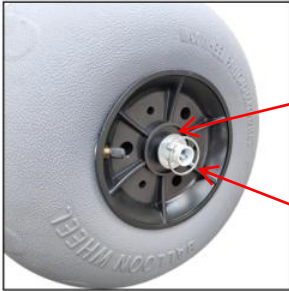
3

When the wheel be
inflating, the diameter
should not exceed 330mm.

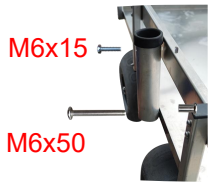


4

Be finished.



Paso 5: Arreglar el pasamanos.



Paso 6: Instalación completa.

MAINTENANCE

13. Limpiar la superficie después de cada uso.
14. Verifique y confirme que el carrito esté intacto y que la presión de los neumáticos sea normal antes de cada uso.
15. Compruebe que los tornillos estén apretados .

Dirección: Baoshanqu Shuangchenglu 803long 11hao 1602A-1609shi
Shanghai

Importado a AUS: SIHAO PTY LTD, 1 ROKEVA STREETEASTWOOD
NSW 2122 Australia

Importado a EE. UU.: Sanven Technology Ltd, Suite 250, 9166 Anaheim
Place, Rancho Cucamonga, CA 91730

EC	REP
-----------	------------

SHUNSHUN GmbH
Römeräcker 9 Z2021, 76351
Linkenheim-Hochstetten, Germany

UK	REP
-----------	------------

Pooledas Group Ltd
Unit 5 Albert Edward House, The
Pavilions Preston, United Kingdom

Hecho en china

VEVOR[®]

TOUGH TOOLS, HALF PRICE

Técnico Certificado de soporte y garantía electrónica

www.vevor.com/support

VEVOR[®]

TOUGH TOOLS, HALF PRICE

Wsparcie techniczne i certyfikat e-gwarancji

www.vevor.com/support

WÓZEK WĘDKARSKI

MODEL: YK-500

We continue to be committed to provide you tools with competitive price.

"Save Half", "Half Price" or any other similar expressions used by us only represents an estimate of savings you might benefit from buying certain tools with us compared to the major top brands and does not necessarily mean to cover all categories of tools offered by us. You are kindly reminded to verify carefully when you are placing an order with us if you are actually saving half in comparison with the top major brands.

VEVOR®

TOUGH TOOLS, HALF PRICE

FISHING CART

MODEL: YK-500



NEED HELP? CONTACT US!

Have product questions? Need technical support? Please feel free to contact us:

Technical Support and E-Warranty Certificate
www.vevor.com/support

This is the original instruction, please read all manual instructions carefully before operating. VEVOR reserves a clear interpretation of our user manual. The appearance of the product shall be subject to the product you received. Please forgive us that we won't inform you again if there are any technology or software updates on our product.

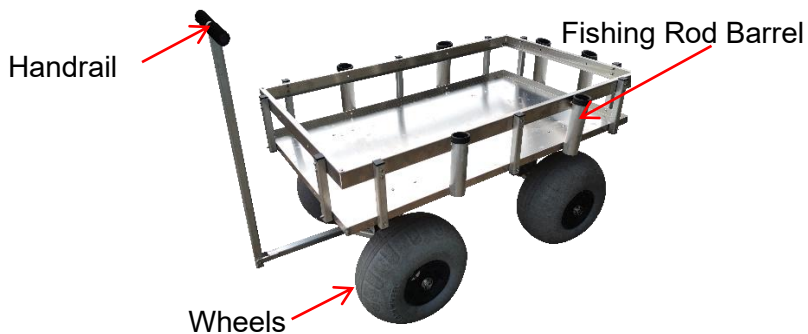
SAFETY INSTRUCTIONS

1. Sprawdź i potwierdź, że wózek jest nienaruszony i czy ciśnienie w oponach jest prawidłowe normalne przed każdym użyciem. Przed użyciem kół należy trochę napompować i uważać, aby nie napompować nadmiernie!
2. Zabrania się przewożenia osób w jakimkolwiek stanie.
3. Zabrania się ładowania artykułów na terenie nierównym i pagórkowatym.
4. Przeciążanie jest surowo zabronione.
5. Nie poruszaj się zbyt szybko, mijając obszary z dziurami.

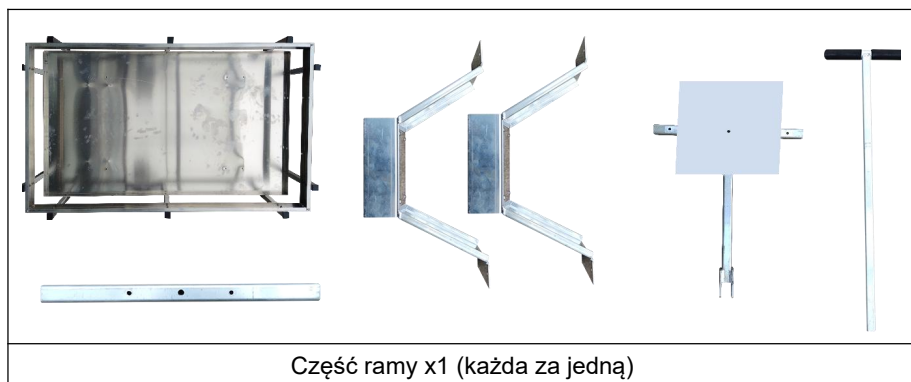
MODEL AND PARAMETERS

Model	YK-500
Maks. Obciążenie	500 funtów
Koła	13 cali (po napompowaniu) , nadmuchiwane, Koła
Beczka na wędkę	6
Rozmiar ramy	45,9 x 27 x 7,9 cala
Materiał	Stop aluminium
Kolor	Srebro




STRUCTURE DIAGRAM






INSTALLATION









		
Beczka na wędkę x 6	koła x 4	Pralka x 4

		
oś A x 2	O- pin x 4	Rozpórka osi x 4

		
Przód A x 2	Klucz szer . 8-10 mm x	Klucz szer . 17-19 mm

	1	x 2
--	---	-----

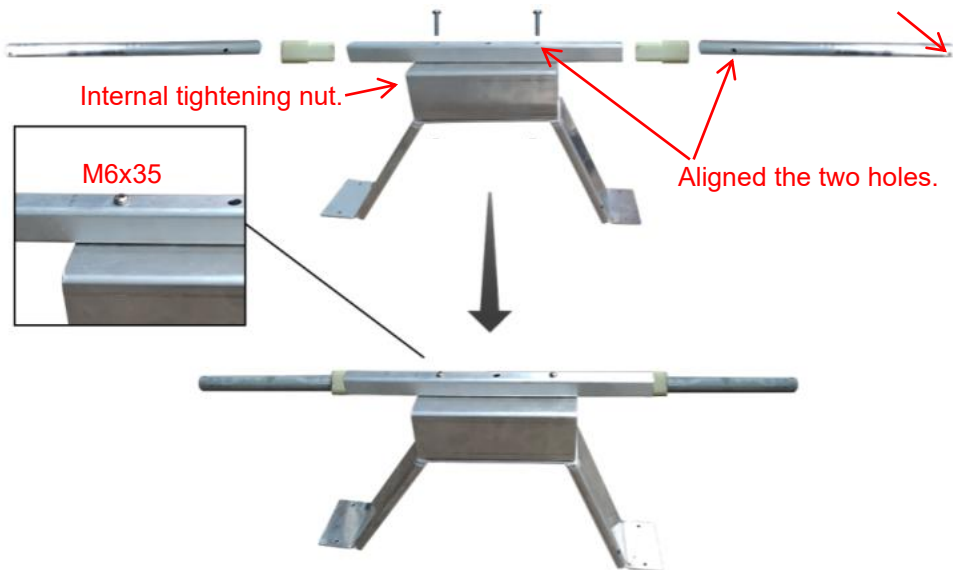
		
Klucz sześciokątny 4 mm x 2	Śruby M6x15 x15 (Potrzebuję czternastu, jeszcze jednego)	Śruby M6x35 x5 (Potrzebuję czterech, jeszcze jednego)

		
M 6x5 0 Śruby x 2 (Potrzebuję jednego, jeszcze jednego)	M 6x5 0 Śruba x 7 (Potrzebuję sześciu, jeszcze jednego)	Instrukcja obsługi x1
		
Śruba M10x120 x1	Pompka ręczna x1	Kartonowy przyrząd do mocowania kół x 1

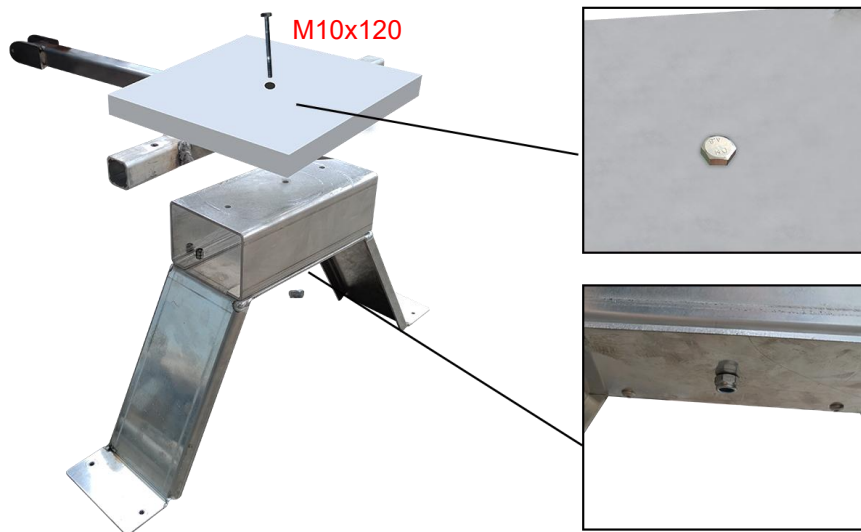
Krok 1: Montaż wspornika tylnego koła.

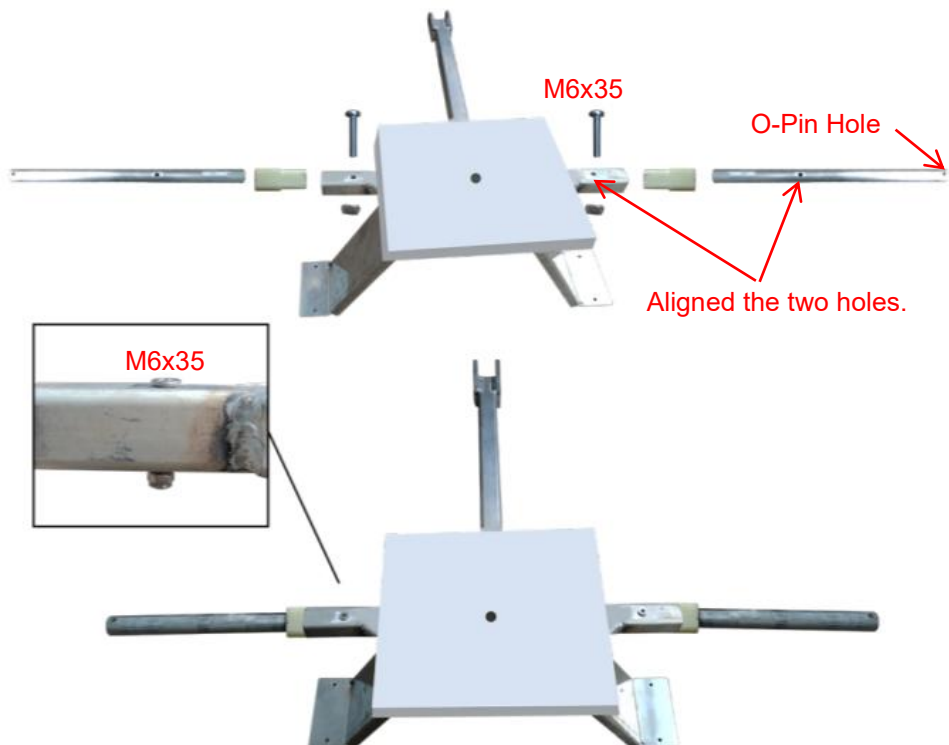
M6x35

O-Pin Hole

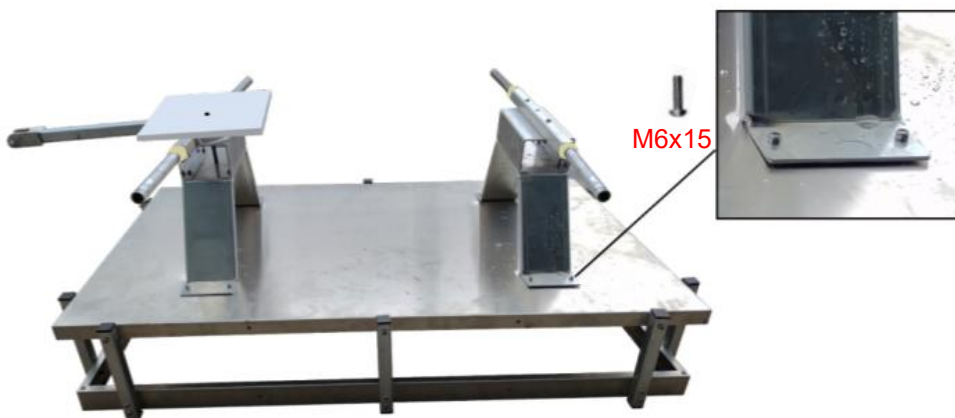


Krok 2: Montaż wspornika przedniego koła.





Krok 3: Odwróć ramę do góry nogami i zamocuj zestaw kół .



Krok 4: Zamontuj koła i uchwyty . _

UWAGA: Przed montażem należy napompować koła.



Take out the wheel
and cardboard jig.



Put the cardboard jig on
the inflatable wheel.



When the wheel be
inflating, the diameter
should not exceed 330mm.



Be finished.



Krok 5: Napraw poręcz.



Krok 6: Instalacja zakończona.

MAINTENANCE

16. Po każdym użyciu należy oczyścić powierzchnię.
17. Sprawdź i potwierdź, że wózek jest nienaruszony i czy ciśnienie w oponach jest prawidłowe normalne przed każdym użyciem.
18. Sprawdź, czy śruby są dokręcone .

Adres: Baoshanqu Shuangchenglu 803long 11hao 1602A-1609shi
Szanghaj

Import do AUS: SIHAO PTY LTD, 1 ROKEVA STREETEASTWOOD NSW
2122 Australia

Import do USA: Sanven Technology Ltd, Suite 250, 9166 Anaheim Place,
Rancho Cucamonga, CA 91730

EC	REP
-----------	------------

SHUNSHUN GmbH
Römeräcker 9 Z2021, 76351
Linkenheim-Hochstetten, Germany

UK	REP
-----------	------------

Pooledas Group Ltd
Unit 5 Albert Edward House, The
Pavilions Preston, United Kingdom

Wyprodukowano w Chinach

VEVOR[®]

TOUGH TOOLS, HALF PRICE

Techniczny Certyfikat wsparcia i e-gwarancji

www.vevor.com/support

VEVOR[®]

TOUGH TOOLS, HALF PRICE

Technische ondersteuning en e-garantiecertificaat

www.vevor.com/support

VISSERSKAR

MODEL: YK-500

We continue to be committed to provide you tools with competitive price.

"Save Half", "Half Price" or any other similar expressions used by us only represents an estimate of savings you might benefit from buying certain tools with us compared to the major top brands and does not necessarily mean to cover all categories of tools offered by us. You are kindly reminded to verify carefully when you are placing an order with us if you are actually saving half in comparison with the top major brands.

VEVOR[®]

TOUGH TOOLS, HALF PRICE

FISHING CART

MODEL: YK-500



NEED HELP? CONTACT US!

Have product questions? Need technical support? Please feel free to contact us:

Technical Support and E-Warranty Certificate
www.vevor.com/support

This is the original instruction, please read all manual instructions carefully before operating. VEVOR reserves a clear interpretation of our user manual. The appearance of the product shall be subject to the product you received. Please forgive us that we won't inform you again if there are any technology or software updates on our product.

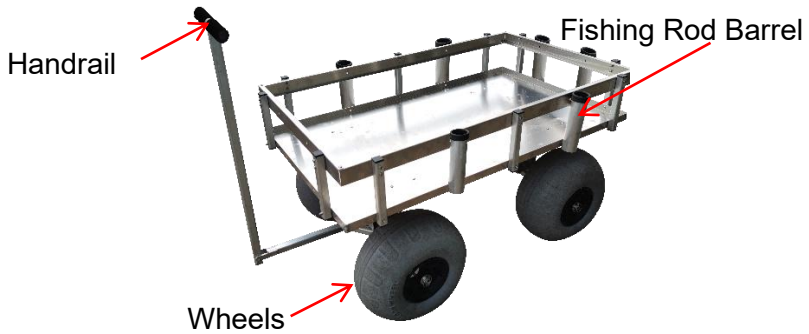
SAFETY INSTRUCTIONS

1. Controleer en bevestig dat de wagen intact is en dat de bandenspanning hoog is normaal vóór elk gebruik. Blaas een beetje op voordat u de wielen gebruikt, en pas op dat u de wielen niet te hard opblaast!
2. Het is onder geen enkele omstandigheid verboden mensen te vervoeren.
3. Het is verboden artikelen te laden op oneffen en heuvelachtig terrein.
4. Overbelasting is ten strengste verboden.
5. Beweeg niet te snel bij het passeren van kuilen.

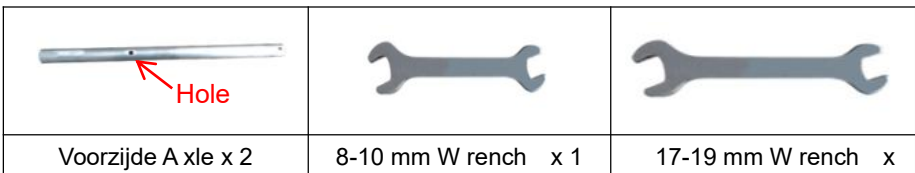
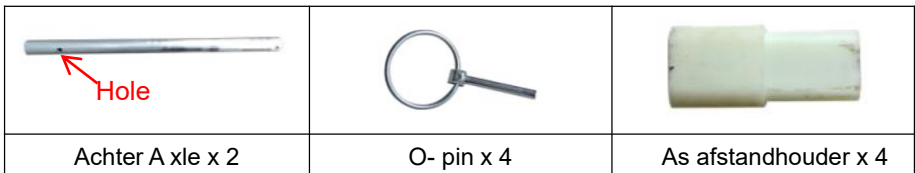
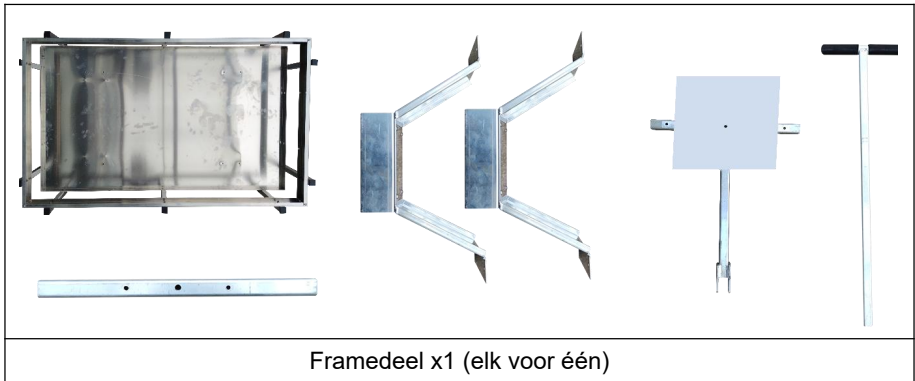
MODEL AND PARAMETERS

Model	YK-500
Max. Laden	500 pond
Wielen	13 inch (na opgeblazen maat) , opblaasbaar,
Hengel vat	6
Framemaat	45,9 x 27 x 7,9 inch
Materiaal	Aluminium legering
Kleur	Zilver

STRUCTURE DIAGRAM









INSTALLATION



		2
--	--	---

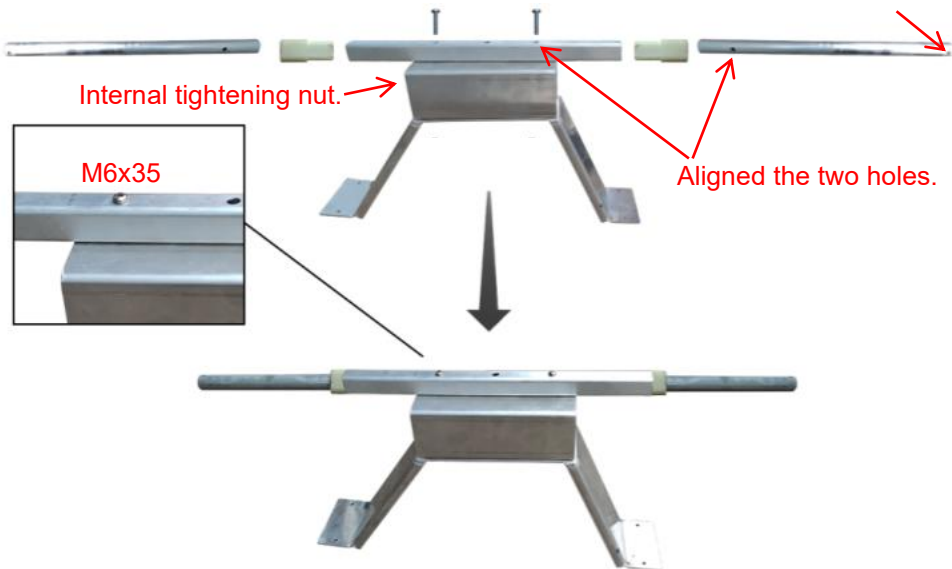
		
4 mm inbussleutel x 2	M6x15 Bouten x15 (Veertien nodig, nog één)	M6x35 Bouten x5 (Vier nodig, nog één)

		
M 6x5 0 Bouten x 2 (Ik heb er nog één nodig)	M 6x5 0 Bout x 7 (Zes nodig, nog één)	Gebruikershandleiding x1
		
M10x120 Bout x1	Handpomp x1	Wielmal karton x 1

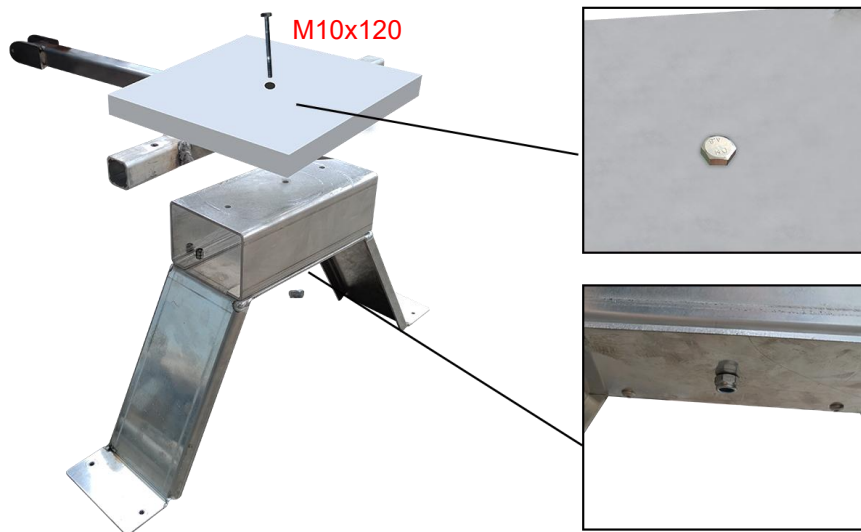
Stap 1: Installatie van de achterwielbeugel.

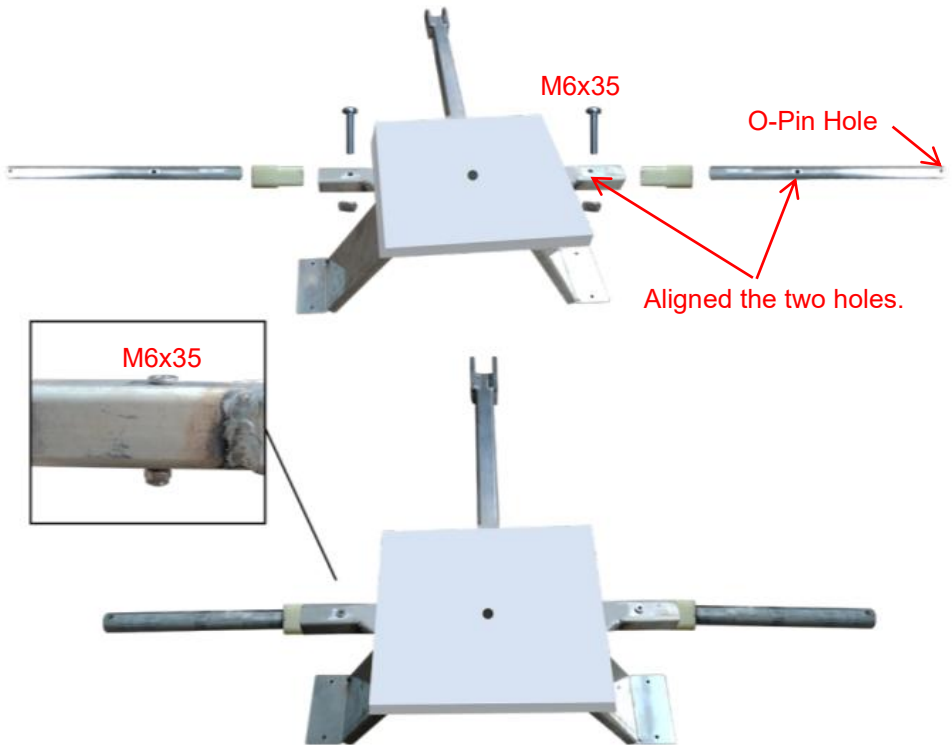
M6x35

O-Pin Hole



Stap 2: Installatie van de voorwielbeugel.





Stap 3: Draai het frame ondersteboven en bevestig de wielsets .



Stap 4: Installeer de wielen en de handgreepstukken .

OPMERKING: Pomp de wielen op voordat u ze installeert.



Take out the wheel and cardboard jig.



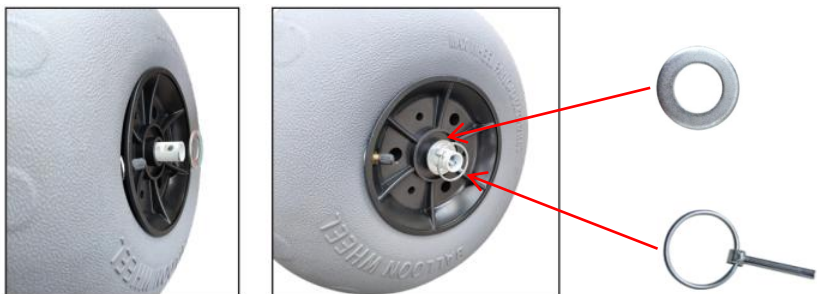
Put the cardboard jig on the inflatable wheel.



When the wheel be inflating, the diameter should not exceed 330mm.



Be finished.



Stap 5: Bevestig de leuning.



Stap 6: Installatie voltooid.

MAINTENANCE

19. Reinig het oppervlak na elk gebruik.
20. Controleer en bevestig dat de wagen intact is en dat de bandenspanning hoog is normaal vóór elk gebruik.
21. Controleer of de bouten goed vastzitten .

Adres: Baoshanqu Shuangchenglu 803long 11hao 1602A-1609shi
Shanghai

Geïmporteerd naar AUS: SIHAO PTY LTD, 1 ROKEVA
STREETEASTWOOD NSW 2122 Australië

Geïmporteerd naar de VS: Sanven Technology Ltd, Suite 250, 9166
Anaheim Place, Rancho Cucamonga, CA 91730

EC	REP
-----------	------------

SHUNSHUN GmbH
Römeräcker 9 Z2021, 76351
Linkenheim-Hochstetten, Germany

UK	REP
-----------	------------

Pooledas Group Ltd
Unit 5 Albert Edward House, The
Pavilions Preston, United Kingdom

Gemaakt in China

VEVOR[®]

TOUGH TOOLS, HALF PRICE

Technisch Ondersteuning en e-garantiecertificaat

www.vevor.com/support

VEVOR[®]

TOUGH TOOLS, HALF PRICE

Teknisk support och e-garanticertifikat

www.vevor.com/support

FISKEVAGN

MODELL: YK-500

We continue to be committed to provide you tools with competitive price.

"Save Half", "Half Price" or any other similar expressions used by us only represents an estimate of savings you might benefit from buying certain tools with us compared to the major top brands and does not necessarily mean to cover all categories of tools offered by us. You are kindly reminded to verify carefully when you are placing an order with us if you are actually saving half in comparison with the top major brands.

VEVOR[®]

TOUGH TOOLS, HALF PRICE

FISHING CART

MODELL: YK-500



NEED HELP? CONTACT US!

Have product questions? Need technical support? Please feel free to contact us:

Technical Support and E-Warranty Certificate
www.vevor.com/support

This is the original instruction, please read all manual instructions carefully before operating. VEVOR reserves a clear interpretation of our user manual. The appearance of the product shall be subject to the product you received. Please forgive us that we won't inform you again if there are any technology or software updates on our product.

SAFETY INSTRUCTIONS

1. Kontrollera och bekräfta att vagnen är hel och att däcktrycket är normalt före varje användning. Blås upp lite innan du använder hjulen och var försiktig så att du inte blåser upp för mycket!
2. Det är förbjudet att transportera människor under alla förhållanden.
3. Det är förbjudet att lasta föremål i ojämn och kuperad terräng.
4. Överbelastning är strängt förbjuden.
5. Rör dig inte för snabbt när du passerar gropar.

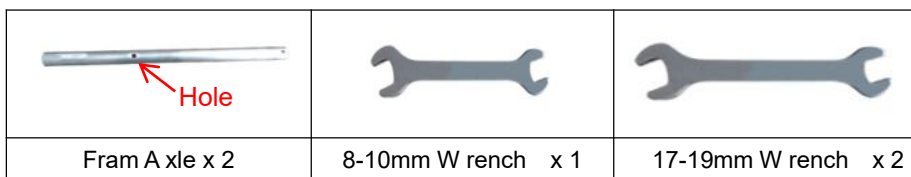
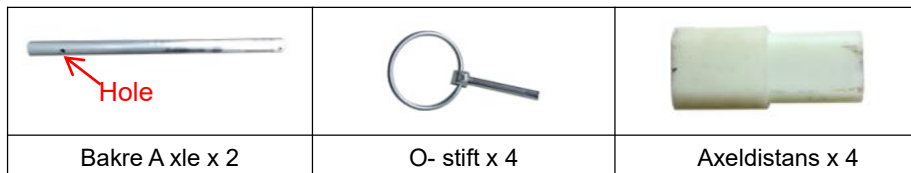
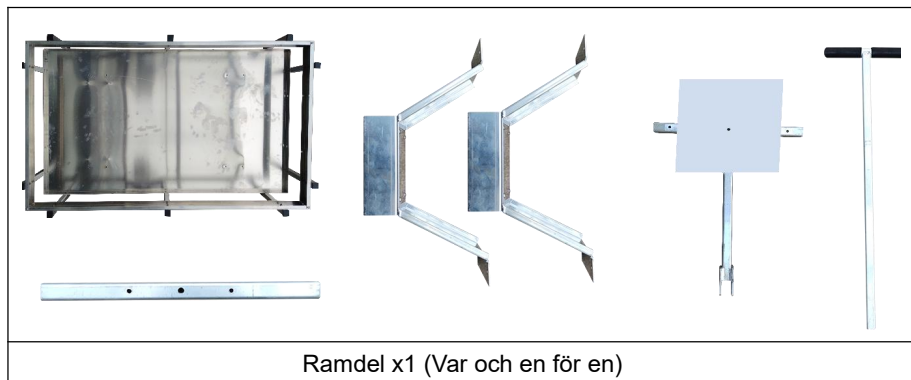
MODEL AND PARAMETERS







Modell	YK-500
Max. Ladda	500 pund
Hjul	13 tum (efter uppblåst storlek) , uppblåsbar,
Fiskspö fat	6
Ramstorlek (inuti)	45,9 x 27 x 7,9 tum
Material	Aluminiumlegering
Färg	Silver

STRUCTURE DIAGRAM

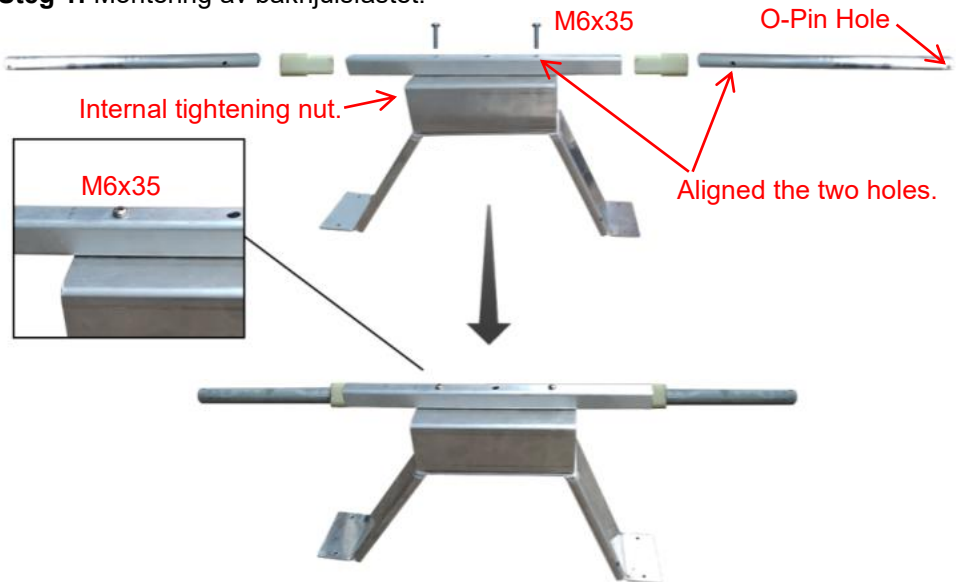


INSTALLATION

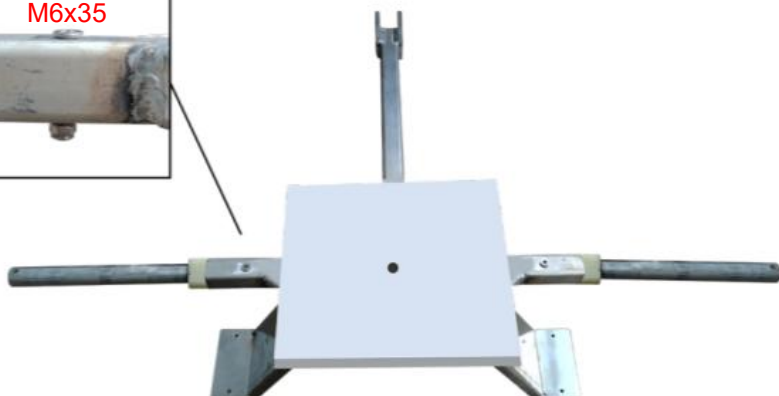
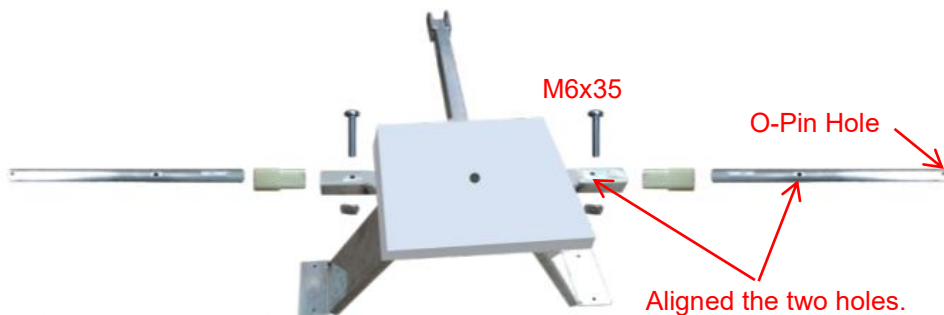
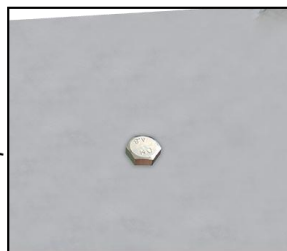


		
M 6x5 0 Bultar x 2 (Behöver en, en till)	M 6x5 0 Bult x 7 (Behöver sex, en till)	Användarmanual x1
		
M10x120 Bult x1	Handpump x1	Hjuljigg kartong x 1

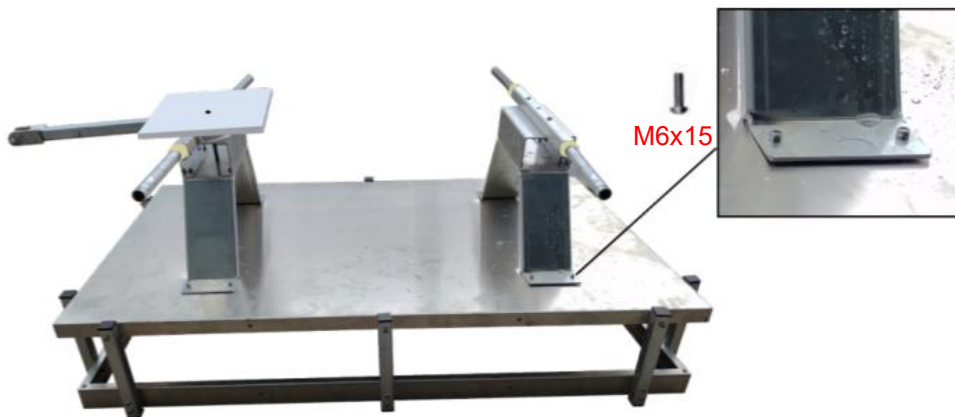
Steg 1: Montering av bakhjulsfästet.



Steg 2: Montering av framhjulsfästet.



Steg 3: Vänd ramen upp och ner och fäst hjulsatsen s.



Steg 4: Montera hjulen och handtagsdelarna . _

OBS: Blås upp hjulen före installation.



Take out the wheel
and cardboard jig.



Put the cardboard jig on
the inflatable wheel.



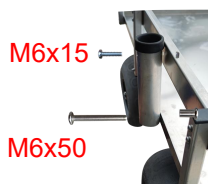
When the wheel be inflating, the diameter should not exceed 330mm.



Be finished.



Steg 5: Fixa ledstången.



Steg 6: Installationen är klar.

MAINTENANCE

22. Rengör ytan efter varje användning.
23. Kontrollera och bekräfta att vagnen är hel och att däcktrycket är normalt före varje användning.
24. Kontrollera att bultarna är åtdragna .

Adress: Baoshanqu Shuangchenglu 803long 11hao 1602A-1609shi
Shanghai

Importerad till AUS: SIHAO PTY LTD, 1 ROKEVA STREETEASTWOOD
NSW 2122 Australien

Importerad till USA: Sanven Technology Ltd, Suite 250, 9166 Anaheim
Place, Rancho Cucamonga, CA 91730



SHUNSHUN GmbH
Römeräcker 9 Z2021, 76351
Linkenheim-Hochstetten, Germany



Pooledas Group Ltd
Unit 5 Albert Edward House, The
Pavilions Preston, United Kingdom

Tillverkad i Kina

VEVOR[®]

TOUGH TOOLS, HALF PRICE

Teknisk Support och e-garanticertifikat

www.vevor.com/support